

Strategic Environmental Assessment and Habitats Regulations Assessment of the Tredington Parish Neighbourhood Development Plan

SEA and HRA Screening Document

October 2021



LEPUS CONSULTING
LANDSCAPE, ECOLOGY, PLANNING & URBAN SUSTAINABILITY

Strategic Environmental Assessment and Habitats Regulations Assessment of the Tredington Neighbourhood Development Plan

SEA and HRA Screening Document

LC-731	Document Control Box
Client	Stratford-on-Avon District Council
Report Title	Strategic Environmental Assessment and Habitats Regulations Assessment of the Tredington Neighbourhood Development Plan: SEA and HRA Screening Document
File name	LC-731_Tredington_NDP_SEA_HRA_Screening_7_271021RI.docx
Date	October 2021
Author	RI
Reviewed	LB
Approved	ND

About this report & notes for readers

Lepus Consulting Ltd (Lepus) has prepared this report for the use of Stratford-on-Avon District Council. There are a number of limitations that should be borne in mind when considering the results and conclusions of this report. No party should alter or change this report whatsoever without written permission from Lepus.

© Lepus Consulting Ltd

The conclusions below are based on the best available information, including information that is publicly available. No attempt to verify these secondary data sources has been made and they have been assumed to be accurate as published.

This report was prepared during August and October 2021 and is subject to and limited by the information available during this time. This

report has been prepared with reasonable skill, care and diligence within the terms of the contract with the client. Lepus Consulting accepts no responsibility to the client and third parties of any matters outside the scope of this report. Third parties to whom this report or any part thereof is made known rely upon the report at their own risk.

Client comments can be sent to Lepus using the following address.

1 Bath Street,
Cheltenham
Gloucestershire
GL50 1YE

Telephone: 01242 525222

E-mail: enquiries@lepusconsulting.com

www.lepusconsulting.com

Contents

1	Introduction	4
1.1	This report.....	4
1.2	Strategic Environmental Assessment.....	4
1.3	The Tredington Neighbourhood Development Plan.....	4
1.4	Consultation	7
1.5	Meeting the Basic Conditions.....	7
1.6	The Parish of Tredington.....	8
1.7	Relationship with the Core Strategy.....	9
2	The Screening Process	12
2.1	Strategic Environmental Assessment screening.....	12
2.2	The screening process.....	12
2.3	Relevance to the SEA Directive.....	15
2.4	Determination of likely significant effects.....	16
2.5	Biodiversity, flora and fauna.....	17
2.6	Population and human health.....	20
2.7	Transport and accessibility	22
2.8	Soil, water and air	23
2.9	Climatic factors.....	28
2.10	Material assets	28
2.11	Cultural heritage.....	29
2.12	Landscape	32
3	HRA Screening Process.....	36
3.1	Habitats Regulations Assessment screening.....	36
3.2	Determination of likely significant effects.....	36
4	Conclusions	37
4.1	SEA Screening outcome.....	37
4.2	HRA Screening outcome	37
4.3	Consultation	37
	Appendix A: Tredington NDP Policies.....	38
	Appendix B: Consultation Responses.....	40

List of Figures

Figure 1.1: Tredington Parish Boundary (source: Tredington NDP)	6
Figure 1.2: Tredington Built Up Area Boundary (source: Tredington NDP)	10
Figure 1.3: Newbold-on-Stour Built Up Area Boundary (source: Stratford-on-Avon District Sites Allocation Plan).....	11
Figure 2.1: Application of the SEA Directive to plans and programmes (source: Office of the Deputy Prime Minister).....	13
Figure 2.2: Sites of Special Scientific Interest and SSSI Impact Risk Zones in and around Tredington Parish (source: Natural England)	18
Figure 2.3: Biodiversity assets in and around Tredington Parish (source: Natural England and Stratford-on-Avon District Council)	19
Figure 2.4: Agricultural Land Classification in and around Tredington Parish (source: Natural England)	25
Figure 2.5: Flood Zones in and around Tredington Parish (source: Environment Agency).....	26
Figure 2.6: The risk of surface water flooding extent within Tredington Parish (source: Environment Agency).....	27
Figure 2.7: Heritage assets located in and around Tredington Parish (source: Historic England).....	31
Figure 2.8: Cotswolds AONB and Tredington Parish (source: Natural England)	33
Figure 2.9: Landscape Sensitivity to Housing Development in Tredington (source: White Consultants).....	34
Figure 2.10: Landscape Sensitivity to Commercial Development in Tredington (source: White Consultants).....	34
Figure 2.11: Landscape Sensitivity to Housing Development in Newbold-on-Stour (source: White Consultants)	35
Figure 2.12: Landscape Sensitivity to Commercial Development in Newbold-on-Stour (source: White Consultants)	35

List of Tables

Table 2.1: Establishing whether there is a need for SEA.....	14
Table 2.2: Tredington NDP and the SEA Directive.....	15

Acronyms & Abbreviations

A&E	Accident & Emergency
ALC	Agricultural Land Classification
AONB	Area of Outstanding Natural Beauty
BMV	Best and Most Versatile
BUAB	Build Up Area Boundary
EIA	Environmental Impact Assessment
EU	European Union
GP	General Practice
HRA	Habitats Regulations Assessment
IRZ	Impact Risk Zone
LGS	Local Geological Site
LWS	Local Wildlife Site
ODPM	Office of the Deputy Prime Minister
NCA	National Character Area
NDP	Neighbourhood Development Plan
NPPF	National Planning Policy Framework
PP	Policy or Programme
PPG	Planning Practice Guidance
PRoW	Public Right of Way
RPG	Registered Park and Garden
SAC	Special Area of Conservation
SAP	Site Allocation Plan
SEA	Strategic Environmental Assessment
SM	Scheduled Monument
SPA	Special Protection Area
SSSI	Site of Special Scientific Interest

1 Introduction

1.1 This report

- 1.1.1 This screening report has been prepared to determine whether the Tredington Neighbourhood Development Plan to 2031 (NDP) should be subject to a Strategic Environmental Assessment (SEA), in accordance with the European Directive 2001/42/EC¹ (SEA Directive) and the Environmental Assessment of Plans and Programmes Regulations 2004² (SEA Regulations).
- 1.1.2 This report screens the Pre-Submission Draft Tredington Neighbourhood Development Plan to 2031 (version 10)³.

1.2 Strategic Environmental Assessment

- 1.2.1 The basis for Strategic Environmental Assessment legislation is European Directive 2001/42/EC; this has now been brought into UK law. This was originally transposed into English law by the Environmental Assessment of Plans and Programmes Regulations 2004 (SEA Regulations). Detailed guidance of these regulations can be found in the Government publication 'A Practical Guide to the Strategic Environmental Assessment Directive'⁴ and Paragraph 009 of the Planning Practice Guidance (PPG) 'Neighbourhood Planning' section⁵.
- 1.2.2 Under the requirements of the Environmental Assessment of Plans and Programmes Regulations 2004, certain types of plans that set the framework for the consent of future development projects must be subject to an environmental assessment.

1.3 The Tredington Neighbourhood Development Plan

- 1.3.1 The creation of neighbourhood development plans started with the Government's Localism Act 2011. The Act set out a series of measures to shift power away from central government and towards local people. One of the Localism Act's key components is the neighbourhood development plan; a new tier in planning policy which enables local people to shape the development of the community in which they live.

¹ SEA Directive. Available at: <https://eur-lex.europa.eu/legal-content/EN/TXT/PDF/?uri=CELEX:32001L0042&from=en> [Date Accessed: 23/08/21]

² The Environmental Assessment of Plans and Programmes Regulations 2004. Available at: <http://www.legislation.gov.uk/uksi/2004/1633/contents/made> [Date Accessed: 23/08/21]

³ Tredington Parish Council (2021) Tredington Neighbourhood Plan Pre-Submission Consultation Version (August 2021)

⁴ ODPM (2005) A Practical Guide to the Strategic Environmental Assessment Directive. Available at: https://assets.publishing.service.gov.uk/government/uploads/system/uploads/attachment_data/file/7657/practicalguidesea.pdf [Date Accessed: 23/08/21]

⁵ MHCLG (2020) Guidance: Neighbourhood Planning. Available at: <https://www.gov.uk/guidance/neighbourhood-planning--2> [Date Accessed: 23/08/21]

- 1.3.2 On 27th June 2017, Stratford-on-Avon District Council formally approved the boundary of the designated neighbourhood area of Tredington, which is the same as the parish boundary (see **Figure 1.1**). In 2017, a group of local residents formed a steering committee to develop the NDP.
- 1.3.3 The NDP⁶ offers a picture of the parish and a vision for the twenty-year period to 2031. The NDP's vision for 2031 is in context with the objectives and policies of the NDP and is as follows: *"Tredington Parish aspires to thrive as a vibrant and distinctive neighbourhood, to shape justifiable organic growth that preserves the character of the five communities so they continue to be desirable places to live with a strong sense of community and a prosperous local economy. It will facilitate incremental development of homes and services in a way that preserves both the historic and natural environs and green spaces for current and future generations, while continuing to respect and reflect the views of its communities."*
- 1.3.4 The NDP presents a total of 32 planning policies. A summary of the NDP's policies are listed at **Appendix A**. The NDP policies are presented within the following seven topics:
- Local Economy;
 - Natural Environment;
 - Housing;
 - Built Environment;
 - Infrastructure;
 - Local Amenities; and
 - Community Infrastructure Levy.

⁶ Tredington Parish Council (2021) Tredington Neighbourhood Plan Pre-Submission Consultation Version (August 2021)

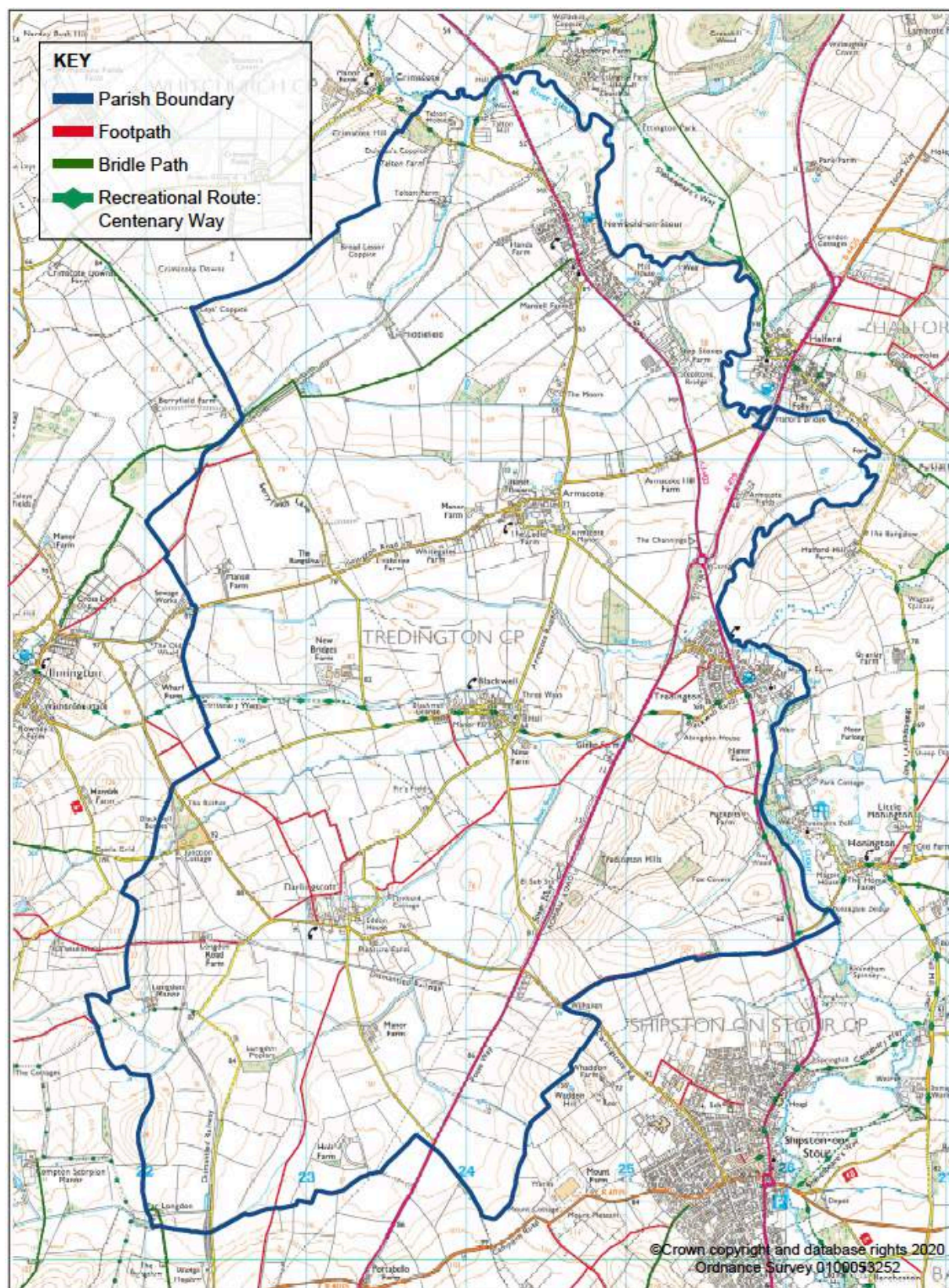


Figure 1.1: Tredington Parish Boundary (source: Tredington NDP)

1.4 Consultation

- 1.4.1 The NDP is subject to public consultation, which provides an opportunity for the public and local organisations to comment on it. After consultation, responses are taken into account and used to prepare a 'submission draft' of the NDP.
- 1.4.2 The submission version of the NDP is then subject to inspection by the Independent Examiner. If the Independent Examiner approves the NDP it will then be subject to a local referendum. If 50% or more of people voting in the referendum support the NDP, then the NDP will be adopted, will gain statutory status and will become part of the Development Plan for Stratford-on-Avon District, alongside the Core Strategy.

1.5 Meeting the Basic Conditions

- 1.5.1 Only a draft neighbourhood Plan or Order that meets each of a set of basic conditions can be put to a referendum and be made. The basic conditions are set out in paragraph 8(2) of Schedule 4B to the Town and Country Planning Act 1990⁷ as applied to neighbourhood plans by section 38A of the Planning and Compulsory Purchase Act 2004. The basic conditions are:
- a. having regard to national policies and advice contained in guidance issued by the Secretary of State it is appropriate to make the order (or neighbourhood plan).
 - b. having special regard to the desirability of preserving any listed building or its setting or any features of special architectural or historic interest that it possesses, it is appropriate to make the order. This applies only to Orders.
 - c. having special regard to the desirability of preserving or enhancing the character or appearance of any conservation area, it is appropriate to make the order. This applies only to Orders.
 - d. the making of the order (or neighbourhood plan) contributes to the achievement of sustainable development.
 - e. the making of the order (or neighbourhood plan) is in general conformity with the strategic policies contained in the development plan for the area of the authority (or any part of that area).
 - f. the making of the order (or neighbourhood plan) does not breach, and is otherwise compatible with, EU obligations as incorporated into UK law.
 - g. prescribed conditions are met in relation to the Order (or plan) and prescribed matters have been complied with in connection with the proposal for the order (or neighbourhood plan).
- 1.5.2 When considering whether a policy is in general conformity a qualifying body, independent examiner, or local planning authority, should consider the following:

⁷ Available at: <https://www.legislation.gov.uk/ukpga/2011/20/schedule/9/enacted> [Date Accessed: 24/08/21]

- whether the neighbourhood plan policy or development proposal supports and upholds the general principle that the strategic policy is concerned with;
- the degree, if any, of conflict between the draft neighbourhood plan policy or development proposal and the strategic policy;
- whether the draft neighbourhood plan policy or development proposal provides an additional level of detail and/or a distinct local approach to that set out in the strategic policy without undermining that policy; and
- the rationale for the approach taken in the draft neighbourhood plan or Order and the evidence to justify that approach.

1.5.3 The NDP must therefore be in general conformity with the development plan (Core Strategy⁸) and have appropriate regard to existing policy and guidance, including the National Planning Policy Framework (NPPF)⁹ and related Planning Practice Guidance advice¹⁰.

1.6 The Parish of Tredington

1.6.1 Tredington Parish is located to the south west of Stratford-on-Avon District, in Warwickshire, and is approximately 18km south west of Warwick, 38km south east of Worcester and 19km north west of Banbury. The parish is comprised of the villages of Tredington and Newbold-on-Stour and hamlets of Armscote, Blackwell and Darlingscott as well as the small rural settlement of Talton.

1.6.2 The parish is rural in nature and is set within the landscape of the River Stour and its tributaries. Major roads A429 and A3400 pass through the eastern parish area, with the A3400 connecting the villages of Tredington and Newbold-on-Stour. There are a number of minor roads within the parish including 'Ilmington Road', which passes west to east through the hamlet of Armscote. There are no railway lines within the parish, with the nearest main line station located within Stratford-upon-Avon, approximately 9km north west of the parish.

1.6.3 The parish has an estimated population of 1,649 as of 2019¹¹. There are some limited facilities located within the parish, largely concentrated within the villages of Tredington and Newbold-on-Stour, including a local store and post office, public houses, churches and village halls.

⁸ Stratford District Council (2016) Stratford-on-Avon Core Strategy 2011 to 2031. Available at: <https://www.stratford.gov.uk/planning-regeneration/core-strategy.cfm> [Date Accessed: 24/08/21]

⁹ MHCLG (2021) National Planning Policy Framework. Available at: <https://www.gov.uk/government/publications/national-planning-policy-framework--2> [Date Accessed: 24/08/21]

¹⁰ MHCLG (2021) Planning Practice Guidance. Available at: <https://www.gov.uk/government/collections/planning-practice-guidance> [Date Accessed: 24/08/21]

¹¹ Office for national statistics (2019) Parish population estimates. Available at: <https://www.ons.gov.uk/peoplepopulationandcommunity/populationandmigration/populationestimates/adhocs/12324parishpopulationestimatesformid2001tomid2019basedonbestfittingofoutputareastoparishes> [Date Accessed: 24/08/21]

1.7 Relationship with the Core Strategy

- 1.7.1 The NDP is a land use plan, prepared for town and country planning purposes. It sets out a framework for future development consents within Tredington Parish. As noted above, once adopted, the NDP will form part of the Development Plan for the district, alongside the Core Strategy and supplementary planning documents.
- 1.7.2 NDPs are smaller in geographic scale than Core Strategies and Local Plans and serve to add further detailed policies and proposals to these documents. The Tredington NDP and the Stratford-on-Avon District Core Strategy will form part of the development plan for the area once the NDP is 'made'.
- 1.7.3 Paragraph 13 of the NPPF¹² states that "*Neighbourhood plans should support the delivery of strategic policies contained in local plans or spatial development strategies; and should shape and direct development that is outside of these strategic policies*".
- 1.7.4 The NDP sets out in Policy H1 support for new developments in the parish within the Built Up Area Boundaries (BUAB) with development only permitted in the surrounding countryside in exceptional circumstances. The BUABs for Tredington and Newbold-on-Stour are shown in **Figures 1.2** and **1.3**, as proposed within the emerging Stratford-on-Avon Site Allocations Plan (SAP) Preferred Options of October 2020¹³.
- 1.7.5 The NDP does not allocate any land for residential development within the parish; however, the emerging SAP identifies two potential Reserve Sites within Newbold-on-Stour and one within Tredington as possible locations for development, should Stratford-on-Avon District Council require additional sites to be brought forward to meet the identified 5-year housing needs.

¹² MHCLG (2021) National Planning Policy Framework. Available at: <https://www.gov.uk/government/publications/national-planning-policy-framework--2> [Date Accessed: 24/08/21]

¹³ Stratford-on-Avon District Council (2020) Site Allocations Plan Regulation 18 Preferred Options Consultation – October 2020. Available at: <https://www.stratford.gov.uk/doc/209801/name/Composite%20version%20v3.pdf> [Date Accessed: 24/08/21]





2 The Screening Process

2.1 Strategic Environmental Assessment screening

- 2.1.1 SEA seeks to ensure that environmental considerations are part of the process of preparing certain plans and programmes. Its purpose is to provide for a high level of protection of the environment and to contribute to the integration of environmental considerations into the preparation and adoption of plans and programmes, with a view to promoting sustainable development. It helps to ensure that, in accordance with the Regulations, an environmental assessment is carried out on certain plans and programmes which are likely to have significant effects on the environment.
- 2.1.2 The process for determining whether or not an SEA is required is called 'screening'. In order to screen, it is necessary to determine if a plan is likely to have significant environmental effects using the criteria set out in Schedule I of the SEA Regulations. A determination cannot be made until the three statutory consultation bodies have been consulted: the Environment Agency, Natural England and Historic England.
- 2.1.3 Within 28 days of its determination, the local planning authority, by virtue of its legal responsibility for NDPs, must publish a statement, setting out its decision. If the authority determines that an SEA is not required, the statement must include the reasons for this.

2.2 The screening process

- 2.2.1 **Figure 2.1** presents a diagram prepared by the Office of the Deputy Prime Minister (ODPM) (2005). This shows the application of the SEA process to plans and programmes. The sequential approach in the flow diagram can be used to screen the Tredington NDP.
- 2.2.2 **Table 2.1** uses the questions presented in **Figure 2.1** to establish whether there is a need for SEA for the Tredington NDP.

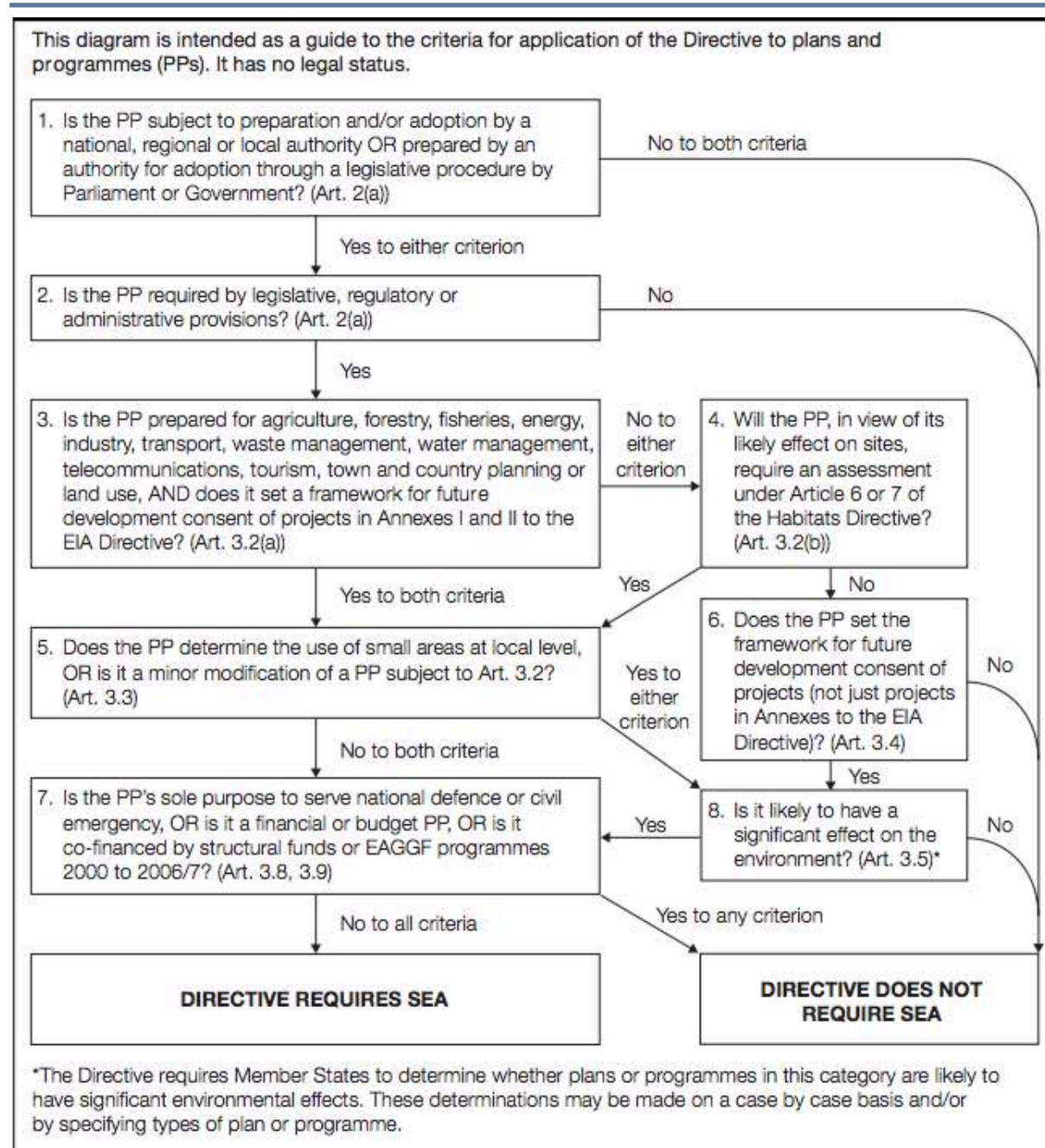


Figure 2.1: Application of the SEA Directive to plans and programmes (source: Office of the Deputy Prime Minister)

Table 2.1: Establishing whether there is a need for SEA

Stage	Y/N	Reason
Is the PP (plan or programme) subject to preparation and/or adoption by a national, regional or local authority OR prepared by an authority for adoption through a legislative procedure by Parliament or Government? (Art. 2(a))	Yes	The plan constitutes an NDP, which will be subject to independent examination and brought into legal force if it receives 50% or more affirmative votes at referendum. The NDP would form part of the statutory development plan for Stratford-on-Avon District.
Is the PP required by legislative, regulatory or administrative provisions? (Art. 2(a))	No	Communities and neighbourhoods have a right to produce an NDP, however it is not required by legislative, regulatory or administrative bodies. If the NDP is adopted it would become part of the statutory development plan for Stratford-on-Avon District, meaning it should continue to be screened under the SEA Directive.
Is the PP prepared for agriculture, forestry, fisheries, energy, industry, transport, waste management, water management, telecommunications, tourism, town and country planning or land use, AND does it set a framework for future development consent of projects in Annexes I and II to the EIA Directive? (Art 3.2(a))	No	The NDP is a land-use plan and sets the framework for future development consents within Tredington Parish. However, the NDP is unlikely to set a framework for consent of projects in Annex 1 of the EIA Directive.
Will the PP, in view of its likely effect on sites, require an assessment for future development under Article 6 or 7 of the Habitats Directive? (Art. 3.2 (b))	No	See Chapter 3 and Chapter 4
Does the PP set the framework for future development consent of projects (not just projects in Annexes to the EIA Directive)? (Art 3.4)	Yes	The NDP does set the framework for future development consent of projects.
Is it likely to have a significant effect on the environment? (Art. 3.5)	No	See Section 2.5 – 2.12 and Chapter 4
Is the PP's sole purpose to serve national defence or civil emergency, OR is it a financial budget PP, OR is it co-financed by structural funds or EAGGD programmes 2000 to 2006/7? (Art 3.8, 3.9)	No	Not applicable.

2.3 Relevance to the SEA Directive

- 2.3.1 Question 8 within the ODPM guidance (see **Figure 2.1**) refers to whether the NDP would have a significant effect on the environment. The criteria from Annex II of the SEA Directive and Schedule 1 of the Environmental Assessment of Plans and Programmes Regulations 2004 can be used to consider the relevance of the Plan to the SEA Directive. **Sections 2.5 – 2.12** consider the likely environmental effects of the plan.

Table 2.2: Tredington NDP and the SEA Directive

Criteria (from Annex II of SEA Directive and Schedule I of Regulations)	Response
The characteristics of plans and programmes	
(a) the degree to which the plan or programme sets a framework for projects and other activities, either with regard to the location, nature, size and operating conditions or by allocating resources	The NDP is prepared for town and country planning purposes and will form a part of the development management framework for the Parish of Tredington once made.
(b) the degree to which the plan or programme influences other plans and programmes including those in a hierarchy	The NDP must be in general conformity with the strategic planning policies set out in the Stratford-on-Avon District Core Strategy 2011 – 2031 and the National Planning Policy Framework. The NDP forms part of the statutory development plan for Stratford-on-Avon District.
(c) the relevance of the plan or programme for the integration of environmental considerations in particular with a view to promoting sustainable development	There are opportunities to integrate environmental considerations within the Tredington NDP. The NDP contains policies that aim to improve local facilities and allow for sustainable growth, as well as preserving the rural character of the Neighbourhood Area whilst protecting open spaces and the natural environment (see Appendix A).
(d) environmental problems relevant to the plan or programme	No environmental issues were identified relevant to the plan.
(e) the relevance of the plan or programme for the implementation of Community legislation on the environment (for example, plans and programmes linked to waste management or water protection)	The NDP is a land use plan and sets the framework for future development consents within the Tredington Neighbourhood Area. It also sets out policies which planning applications within the NDP area will need to adhere to.
Characteristics of the effects and of the area likely to be affected	
(a) the probability, duration, frequency and reversibility of the effects	The NDP is not expected to result in any significant environmental effects.
(b) the cumulative nature of the effects	The NDP is not considered to have any cumulative effects and is not thought to contribute to cumulative

Criteria (from Annex II of SEA Directive and Schedule I of Regulations)	Response
	impacts in combination with the Stratford-on-Avon District Core Strategy.
(c) the transboundary nature of the effects	The NDP is not expected to give rise to any significant transboundary environmental effects.
(d) the risks to human health or the environment (for example, due to accidents)	There are no anticipated risks of the NDP on human health.
(e) the magnitude and spatial extent of the effects (geographical area and size of the population likely to be affected)	The magnitude and spatial extent of the effects outlined in (a) are not thought to extend further than the Plan area.
(f) the value and vulnerability of the area likely to be affected due to: <ul style="list-style-type: none"> (i) special natural characteristics or cultural heritage (ii) exceeded environmental quality standards or limit values (iii) intensive land-use 	It is considered unlikely that the NDP would adversely impact the special natural characteristics or cultural heritage features within the Neighbourhood Area. The NDP would not be expected to cause exceedances of environmental standards or lead to intensive land use.
(g) the effects on areas or landscapes which have a recognised national, Community or international protection status	The NDP is unlikely to result in any adverse impacts on protected landscapes.

2.4 Determination of likely significant effects

- 2.4.1 A summary of baseline conditions and an assessment of the potential effects of the NDP against each of the topics set out in Annex I (f) of the SEA Directive is presented in the following sections. The NDP policies are set out in **Appendix A** and consultation comments (once received following consultation) will be set out in **Appendix B**.

2.5 Biodiversity, flora and fauna

- 2.5.1 The closest European designated biodiversity site to Tredington Parish is Bredon Hill, a Special Area of Conservation (SAC), located approximately 23km south west of the parish. European sites are discussed further in **Chapter 3**.
- 2.5.2 'Midsummer Meadow' Site of Special Scientific Interest (SSSI) is located within the south of the parish and 'Knavenhill Wood' SSSI is located approximately 1.5km north of the parish, as shown in **Figure 2.2**. Other nearby SSSIs include 'Stretton-on-Fosse Pit' SSSI located approximately 1.9km south of the parish.
- 2.5.3 A small proportion of the south eastern area of the parish surrounding 'Midsummer Meadow' SSSI is within an Impact Risk Zone (IRZ) that would require certain thresholds of residential and non-residential development to consult Natural England. However, this area is outside of the parish's BUABs, and the IRZs covering the BUABs do not indicate residential or non-residential development as a particular threat to 'Midsummer Meadow' or 'Knavenhill Wood' SSSIs. Therefore the policies within the NDP would be unlikely to adversely impact these SSSIs.
- 2.5.4 There are no nationally designated biodiversity sites within the parish. Additionally, there are no ancient woodlands within the parish area, with the closest ancient woodland located 1km west and also approximately 1km north east of the parish as can be seen within **Figure 2.3**.
- 2.5.5 There are no Local Nature Reserves (LNR) within the parish. The closest LNR is 'Welcombe Hills' LNR located approximately 10km north of the parish, situated in the outskirts of Stratford-upon-Avon.
- 2.5.6 There are several Local Wildlife Sites (LWSs) in the parish, including 'River Stour' following the eastern parish boundary, 'Tredington Fosse Way Verges' along the A429 and 'Blockwell Flood Meadows' in the centre of the parish (see **Figure 2.3**). Furthermore, there are several areas of priority habitat within the parish including deciduous woodland and traditional orchards scattered throughout the area, lowland meadows to the south of the parish and good quality semi-improved grassland to the north of the parish.
- 2.5.7 NDP Policy NE1, dedicated to preserving and restoring biodiversity and habitats within the parish, aims to ensure that any future development will not be supported unless it "*protects, enhances and/or restores habitat biodiversity*", in order to help prevent adverse impacts from future development on local biodiversity. Additionally, NDP Policy NE2 aims to ensure development "*will not destroy or damage existing trees, hedgerows and woodland*" and that these features will be protected and enhanced, and Policy NE4 seeks to protect the aquatic habitats and biodiversity along the River Stour and its tributaries.
- 2.5.8 Due to the requirements of policies set out above and in the Core Strategy, and as the NDP does not allocate any sites for development, the Tredington NDP would not be expected to lead to any likely significant effects on the biodiversity, flora and fauna within the Plan area.

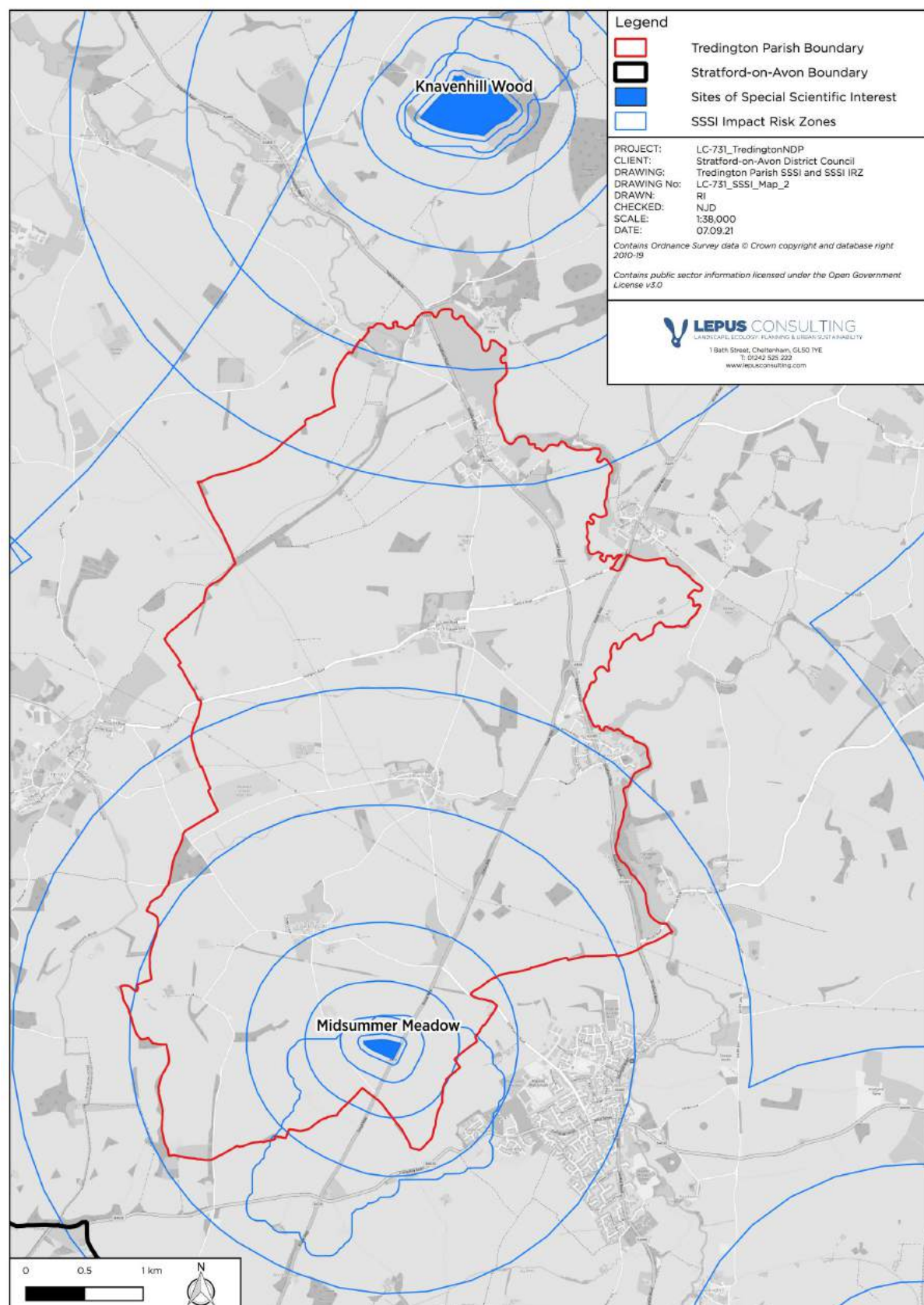


Figure 2.2: Sites of Special Scientific Interest and SSSI Impact Risk Zones in and around Tredington Parish (source: Natural England)

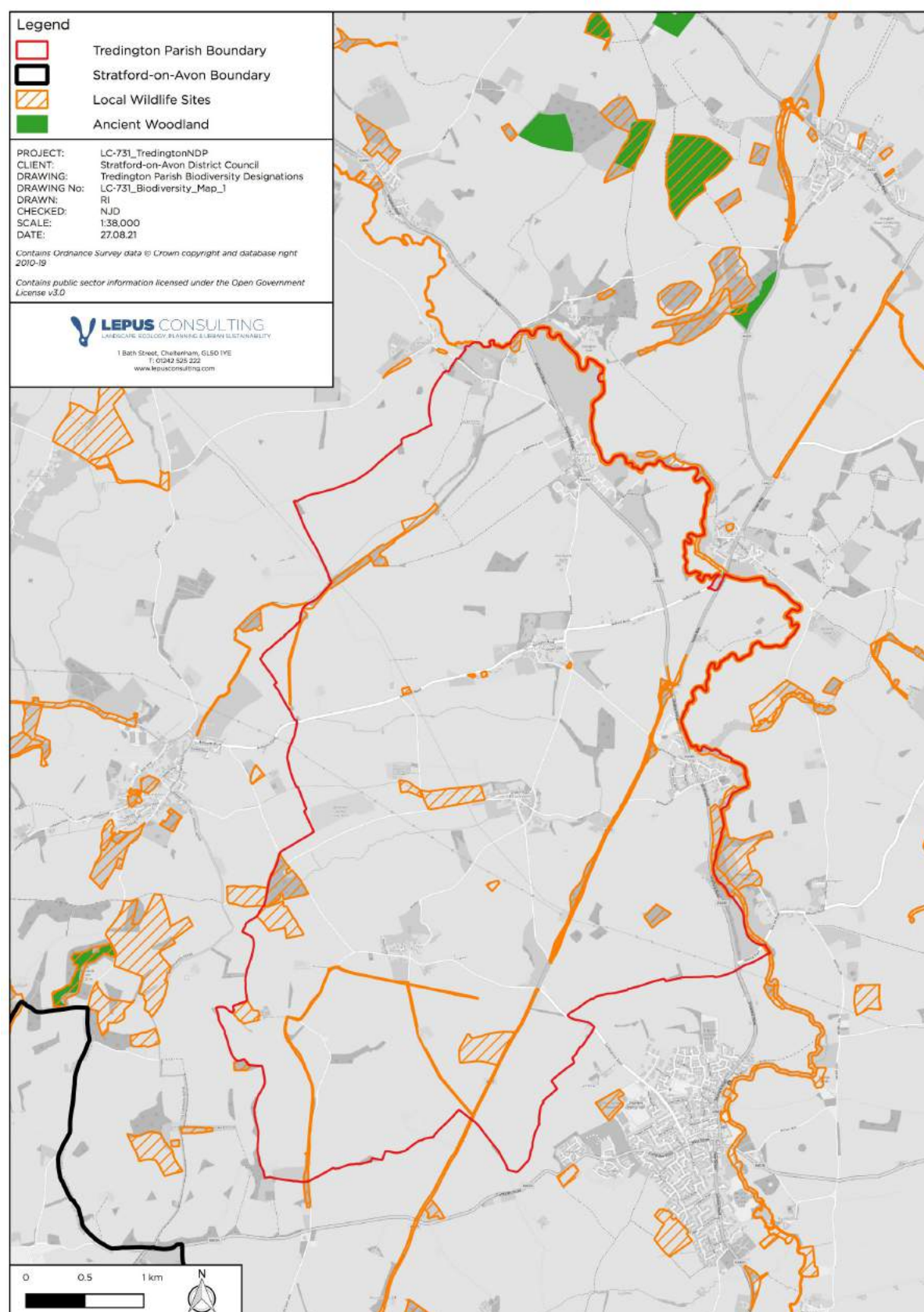


Figure 2.3: Biodiversity assets in and around Tredington Parish (source: Natural England and Stratford-on-Avon District Council)

2.6 Population and human health

- 2.6.1 There are some local shops and services within Tredington Parish including the village shop and post office in Newbold-on-Stour and White Hart and Fuzzy Duck public houses, located in Newbold-on-Stour and Armscote respectively. The nearest supermarket is Co-operative Food located approximately 1.2km south east of the parish, in Shipston-on-Stour. There is one school, Newbold Tredington Primary School, located in the village on Tredington in the east of the parish. The nearest secondary school is Shipston High School in nearby Shipston-on-Stour, located to the south of the parish boundary.
- 2.6.2 Community facilities within the parish include churches located in Newbold-on-Stour, Tredington and Darlingscott, village halls in Blackwell and Newbold-on-Stour and a Bowls Club, allotments and a Sea Scout Hut located within Newbold-on-Stour.
- 2.6.3 There are no GP surgeries or leisure centres within the parish, with the nearest being Shipston Medical Centre and Shipston Leisure Centre, located in Shipston-on-Stour approximately 740m south east of the parish boundary. The nearest hospital with an A&E department is Warwick Hospital, located approximately 19km to the north of the parish.
- 2.6.4 A total of 17 Local Green Spaces have been designated under Policy NE9 of the NDP, including allotments and recreational areas. The policy seeks to protect these green spaces in the parish from development that would “*harm the openness or special character*” of the local landscape and ensure that these green spaces are conserved for the enjoyment of current and future residents. Access to these spaces would be expected to help encourage active lifestyles and exercise, whilst also having benefits to residents’ mental health.
- 2.6.5 Policy H2 aims to ensure that identified housing needs are met and outlines criteria required for the NDP to support the provision of small-scale affordable housing. Additionally, NDP Policy H3 aims to ensure that development on domestic curtilage will be supported, providing certain criteria are met, including proposals which “*preserve or enhance the character of the area*”. These policies could help to ensure that future development within the parish is of a suitable mix and tenure to meet the identified needs of local residents, in line with the NDP’s vision statement.
- 2.6.6 Policy LA1 seeks to support proposals which enhance existing community facilities and avoid any loss of existing community facilities, such as the Newbold-on-Stour village hall and Tredington Women’s Institute Hall. Additionally, Policy LA6 aims to improve local services and ensure that “*developments which threaten any services to the communities will not be supported*”. Therefore, these two policies may ensure the local population’s access to community facilities and services are protected and/or enhanced.
- 2.6.7 Policy LA3 of the NDP sets out to encourage safe walking and cycling within the parish area. The policy seeks to ensure that future development must “*demonstrate safe and convenient access to pavements, footpaths and cycle routes*”. This policy would therefore be expected to improve connectivity and sustainable travel, encourage physical activity and promote community well-being. As such, this would be likely to have a positive impact on the local population.

- 2.6.8 Policy LE1 aims to encourage local employment through protecting existing employment sites within the parish area, stating that opportunities will be supported providing that they are “*of an appropriate scale*” and “*do not markedly detract from the character, appearance or green infrastructure of the parish*”, for example. Therefore, this policy would ensure that new employment opportunities are supported where local interests are taken into account which could lead to a positive impact on economic development within the parish.
- 2.6.9 Overall, the NDP is not expected to likely lead to any adverse significant effects on the local population or human health.

2.7 Transport and accessibility

- 2.7.1 Whilst not an Annex 1(f) topic in itself, transport and accessibility interacts with a number of the topics such as population and human health, material assets and climatic factors.
- 2.7.2 There are various bus stops which are concentrated within the larger settlements within the parish and provide regular services between Shipston-on-Stour and Stratford-upon-Avon where a number of facilities and services can be accessed. From Stratford-upon-Avon, residents can journey to Birmingham, London and Manchester.
- 2.7.3 The parish is well connected to the road network. Major roads A429 and A3400 pass through the eastern parish area and connect the villages of Tredington and Newbold-on-Stour. There are a number of minor roads within the parish including 'Ilmington Road', which passes west to east through the hamlet of Armscote. The closest access to the motorway is the M40 Junction 12 situated approximately 15km east of the parish. Residents would be expected to have suitable access via the road network to Coventry, Worcester, Banbury and nationally.
- 2.7.4 Policy CS.26 of the Stratford-on-Avon Core Strategy states that development should make provision for *"contributions towards local public transport services and support for community transport initiatives"*. This would help to ensure that future development in the parish has access to sustainable transport options.
- 2.7.5 Policy LA3 of the NDP sets out to encourage safe walking and cycling within the parish area. The policy seeks to ensure that future development must *"demonstrate safe and convenient access to pavements, footpaths and cycle routes"*. Additionally, Policy IN3 seeks to support development through requirements which ensure pavements are provided alongside roads and footpaths link new development sites with the village centre, for example. Through these policies, any future development proposals would therefore be expected to encourage walking and cycling in the local area, although there is likely to be some reliance on car use due to the rural location of the parish. Policy LA6 on the other hand seeks to support proposals which do not threaten existing community services, including bus services, medical facilities and mobile libraries. The policy will ensure that access to local services is protected and/or enhanced, and therefore will likely improve access to local facilities and transport methods throughout the Plan area.
- 2.7.6 The NDP and Core Strategy policies would be expected to help prevent adverse impacts in regard to transport and accessibility occurring due to future development within Tredington. Overall, the NDP is not expected to lead to any likely significant effects on transport or accessibility.

2.8 Soil, water and air

- 2.8.1 The majority of Tredington Parish is situated on Agricultural Land Classification (ALC) Grade 2 and 3 land (see **Figure 2.4**). As such, any future development within the parish could potentially result in the loss of 'Best and Most Versatile' (BMV) agricultural land, if this land is found to be Subgrade 3a¹⁴. Some areas to the north, east and west of the parish have been identified as less agriculturally important Grade 4 ALC land.
- 2.8.2 Policy AS.10 of the Stratford-on-Avon Core Strategy seeks to prioritise "*the re-use of brownfield land*", supporting the redevelopment of brownfield land within the identified BUABs (see **Figures 1.2** and **1.3**). This would be expected to help reduce the volume of greenfield land lost due to development and protect BMV land in the parish.
- 2.8.3 As the parish of Tredington contains no Air Quality Management Areas and is largely rural, air quality within the parish area is expected to be generally good. However, as the A429 and A3400 pass in close proximity to Tredington and Newbold-on-Stour, any future development within 200m of one of these main roads could potentially expose residents to higher levels of air pollution¹⁵.
- 2.8.4 The River Stour passes alongside the eastern parish boundary, meandering through the village of Tredington and adjacent to Newbold-on-Stour. There are some significant areas of Flood Zone 2 and 3 associated with the River Stour and its tributaries (namely the Back Brook), and are most prominent in the north, east and south of the parish (see **Figure 2.5**). There are also areas of high surface water flood risk associated with this river and local brooks, as well as significant extents of low, medium and high surface water flood risk throughout the area, generally focused along roads and field boundaries (see **Figure 2.6**).
- 2.8.5 In conformity with Policy CS.4 of Stratford-on-Avon's Core Strategy and the NPPF, development proposals must follow guidelines set out in relation to the water environment and management of flood risk within the parish in order to address fluvial and pluvial flooding issues. Future development must not exacerbate flood risk in surrounding areas and, where appropriate, should be supported by a site-specific flood risk assessment.
- 2.8.6 Policy IN4 of the NDP is entirely dedicated reducing the risk of fluvial and surface water flooding within the parish, and states the various criteria that future development must meet in order to be supported. For example, developments will only be supported by the NDP if they "*satisfactorily address the risk of pluvial and fluvial flooding by reducing overall flood risk from waste-water drainage and surface run-off*", to ensure future residents are not located within areas liable to flooding.

¹⁴ Natural England (2009) Agricultural Land Classification: protecting the best and most versatile agricultural land. Available at: <http://publications.naturalengland.org.uk/publication/35012> [Date Accessed: 25/08/21]

¹⁵ The Department for Transport (DfT) in their Transport Analysis Guidance (TAG) consider that, "*beyond 200m from the link centre, the contribution of vehicle emissions to local pollution levels is not significant*" Available at: <https://www.gov.uk/government/publications/tag-unit-a3-environmental-impact-appraisal> [Date Accessed: 02/09/21]

-
- 2.8.7 Policy BE1 seeks to ensure that future proposals “*do not increase the likelihood of surface water flooding or exacerbate foul drainage capacity problems*” within the Plan area. Additionally, Policy NE2 aims to support green infrastructure initiatives within development proposals, such as tree planting. On the other hand, Policy NE4 seeks to ensure future developments enhance the natural environment which surrounds rivers and watercourses, such as the River Stour and its tributaries, to prevent their deterioration. These policies will likely help mitigate climate change impacts within the Plan area, such as flooding.
- 2.8.8 Policy NE8 of the NDP aims to minimise air pollution and maintain and/or enhance air quality within the Plan area, by ensuring that future proposals include air pollution mitigation strategies, for example by maximising green energy use throughout the construction phase and occupation of future residential sites. This policy will likely ensure that good air quality within the parish area is maintained, which could have various health benefits for local residents.
- 2.8.9 Overall, the NDP is not expected to have any significant effects on soil, water or air in the parish area.

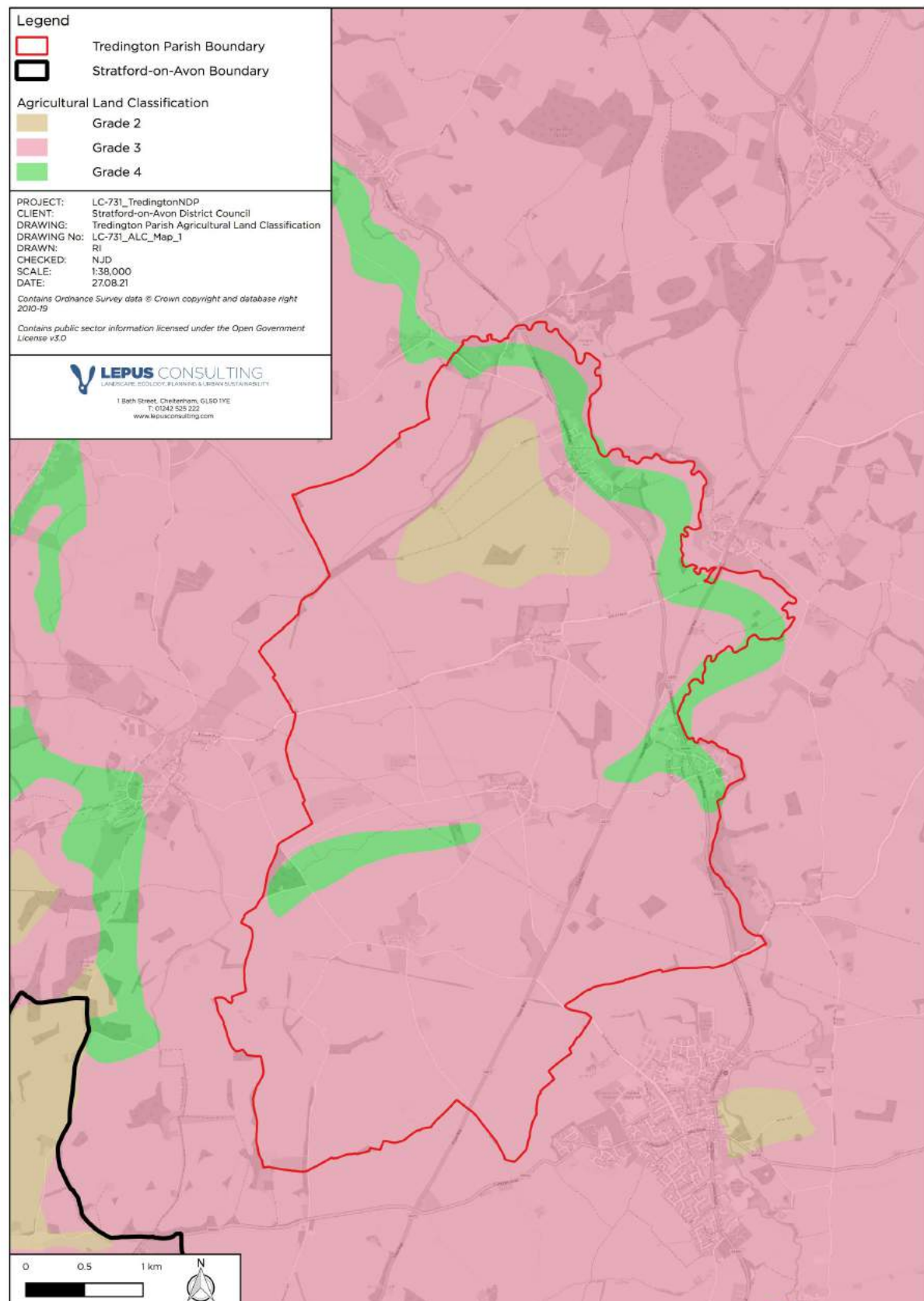


Figure 2.4: Agricultural Land Classification in and around Tredington Parish (source: Natural England)

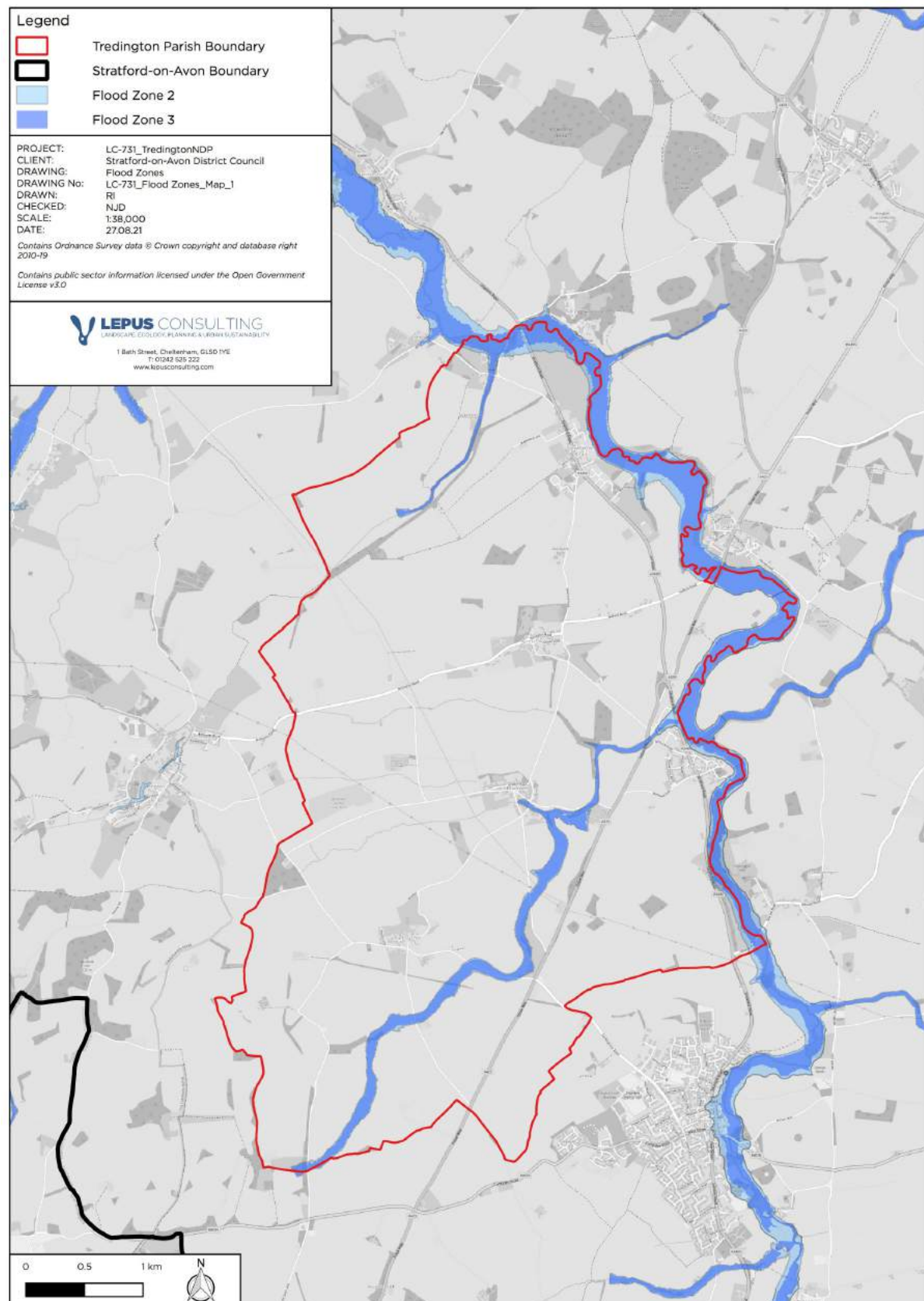


Figure 2.5: Flood Zones in and around Tredington Parish (source: Environment Agency)

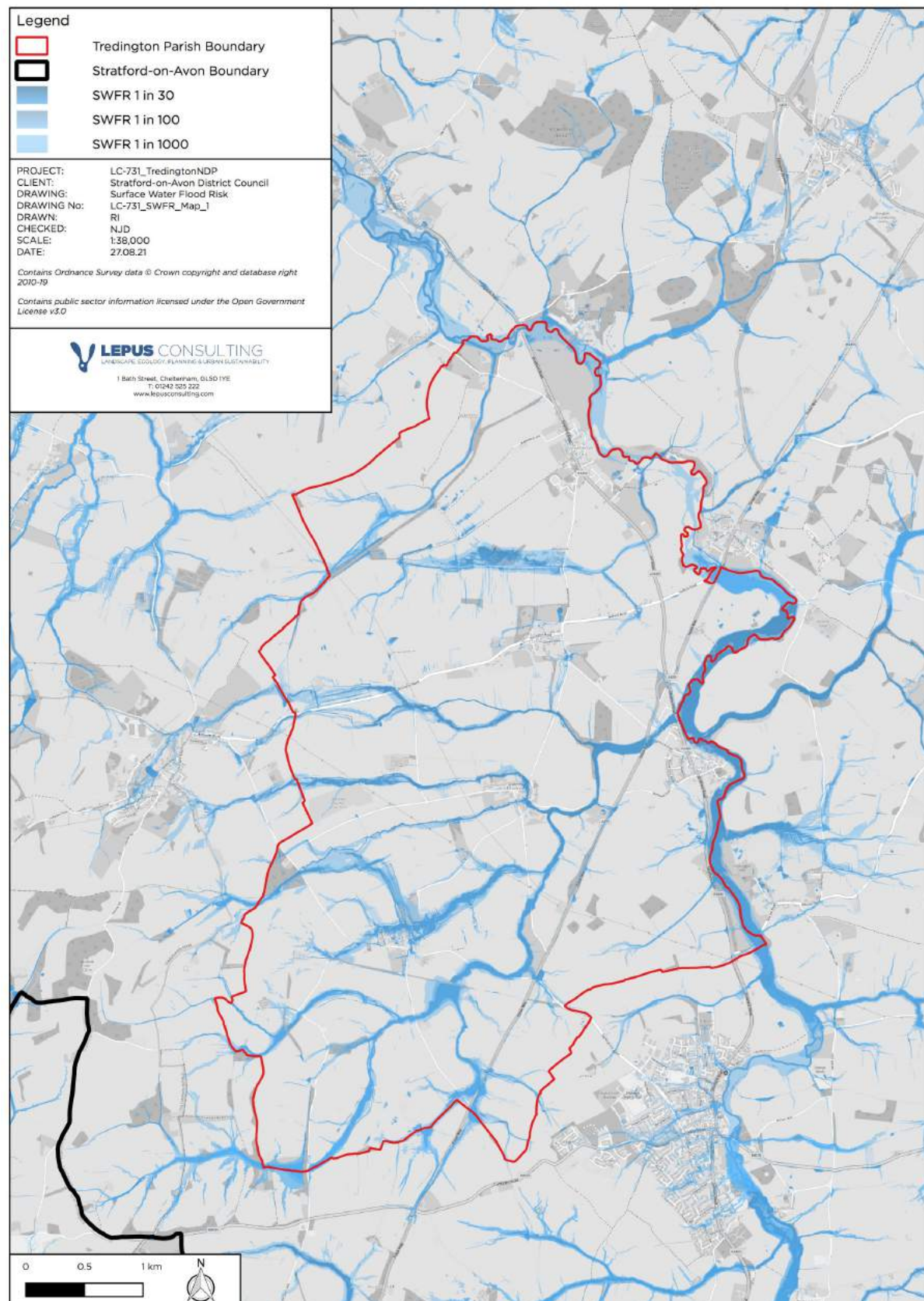


Figure 2.6: The risk of surface water flooding extent within Tredington Parish (source: Environment Agency)

2.9 Climatic factors

- 2.9.1 In conformity with the Core Strategy Policy CS.2, development proposals must demonstrate climate change mitigation and adaptation measures, including designs that reduce carbon emissions and promote renewable energy schemes. Policy CS.3 of the Core Strategy states that “*small-scale community led initiatives for renewable and low carbon energy will be encouraged by the Council*”. Additionally, NDP Policy NE8 seeks to ensure that future development proposals “*maximise the use of green energy*” in the construction phase and occupation of future residential developments.
- 2.9.2 NDP Policy NE1 seeks to preserve and restore local biodiversity and ensure negative impacts are avoided or mitigated, in line with the mitigation hierarchy. NDP Policy NE3 aims to encourage tree planting in line with government targets, to assist with flood mitigation, air quality improvements and landscape enhancements. Additionally, Policy NE4 seeks to ensure that development adjacent to existing aquatic habitats, including the River Stour, should enhance the natural environment, and “*proposals likely to lead to adverse impacts on aquatic habitats will not be supported*”. These measures would be expected to contribute towards reducing flood risk and mitigating climate change.
- 2.9.3 NDP Policy LA5 seeks to ensure that development proposals which would result in loss of existing allotment sites within the parish are not supported, unless an improvement in existing provision or a net increase in provision results. By improving access to allotments or growing spaces, locally grown food could contribute towards mitigation of carbon emissions, by helping to reduce the need to travel to shops and consumption of food grown outside of the local area.
- 2.9.4 Furthermore, Policy LA3 aims to support new development which demonstrates how walking and cycling opportunities have been prioritised and connections have been made to existing routes. These measures could potentially help to decrease the number of petrol or diesel powered vehicles on local roads, reducing carbon emissions and improving local air quality.
- 2.9.5 These policies would be likely to have a positive impact on combatting climate change. Overall, the NDP is not expected to lead to any likely significant effects on climate change.

2.10 Material assets

- 2.10.1 The material assets topic considers social, physical and environmental infrastructure. This sub-section should be read alongside ‘Population and human health’, which details health and social infrastructure implications of the NDP; ‘Climatic factors’, which considers transport infrastructure in terms of sustainable transport; ‘Soil, water and air’, which considers water infrastructure and agricultural land classification; and the ‘Biodiversity, flora and fauna’ sub-section, which considers environmental infrastructure.

- 2.10.2 There are a limited number of local shops and businesses within the parish which may provide some local employment opportunities, including a village shop and post office, Talton Mill Farm Shop and Café, White Hart Public House and Fuzzy Duck Public House. Current and future residents would also be expected to have good access to a range of employment opportunities in nearby towns such as Shipston-on-Stour and Stratford-upon-Avon.
- 2.10.3 Policy LE1 of the NDP summarises the principles to be met in order for new employment opportunities to be promoted within the parish, stating that opportunities will be supported providing that they do not worsen traffic in the area, for example. Furthermore, the policy states that change of use or re-development of land for employment use will be supported in principle, providing that “*there is an insufficient supply of sites to meet requirements over the Plan period*” amongst other criteria. If achieved, this would be likely to have a positive impact on the local economy, encouraging the provision of local job opportunities.
- 2.10.4 Additionally, NDP Policy BE4 outlines the support for conversion of redundant commercial or agricultural buildings and Policy LE2 seeks to support proposals for leisure and tourism based services. This could result in the creation of local business and employment spaces, provide new accommodation to support the visitor economy, and potentially lead to a positive impact on the local economy by providing employment opportunities within the parish.
- 2.10.5 Furthermore, Policy IN1 of the NDP may potentially increase home-based working opportunities in the parish, through encouraging new developments to provide office space and high-speed broadband connectivity.
- 2.10.6 It is considered unlikely that the NDP would have significant adverse impacts on material assets within Tredington Parish.

2.11 Cultural heritage

- 2.11.1 There is one Grade I Listed Building in the parish, ‘Church of St Gregory’, located within the village of Tredington, and five Grade II* Listed Buildings including ‘Armscote House and attached outbuilding’ located in Armscote and ‘Manor Farmhouse’ and ‘Longdon Manorhouse’ which are located in the Darlingscott area of the parish. There are many Grade II Listed Buildings within the parish, largely concentrated within the larger settlements, such as Tredington which has 40 Grade II Listed Buildings (see **Figure 2.7**).
- 2.11.2 There are three conservation areas (CAs) within Tredington Parish (see **Figure 2.7**), ‘Darlingscott’ CA, located to the south west of the parish, ‘Tredington’ CA and a small proportion of ‘Honington’ CA, all of which are located to the east of the parish. ‘Halford’ CA is also located adjacent to the parish boundary and predominantly covers hedgerows and field boundaries adjacent to the River Stour.
- 2.11.3 A small proportion of Scheduled Monuments (SM) ‘Halford Bridge’ and ‘Honiton Bridge’, located in the north east and the south east of the parish respectively, coincide with Tredington Parish (see **Figure 2.7**).

-
- 2.11.4 'Honington Hall' Registered Park and Garden (RPG) partially lies within the parish, located within the south eastern area. The RPG predominantly covers land outside of the parish boundary (see **Figure 2.7**). Other nearby RPGs include 'Alscot Park' located approximately 3.7km north west of the parish.
- 2.11.5 NDP Policy BE3 states that all development proposals "*must take account of the need to sustain and enhance the significance of heritage assets*", in addition to other criteria which aims to preserve and enhance heritage assets. Additionally, Policy BE4 of the NDP focuses on the conversion and re-use of commercial and agricultural buildings, where it provides criteria to ensure development is supported where they "*are in keeping with the character and setting of the original building*", for example. Additionally, Policy BE1 of the NDP states that the proposals must "*be compatible with the distinctive character of the area*", including use of local building materials, as well as preserving and enhancing the historic environment. These policies would help to ensure that future development within the parish is considerate of heritage features and their settings, and contributes positively to the local historic character. Policy NE3 on the other hand aims to protect important views of heritage assets and any proposals which would affect valued landscapes should therefore ensure that they are maintained and/or enhanced and safeguarded.
- 2.11.6 Overall, the NDP is not expected to lead to any likely significant effects on cultural heritage.

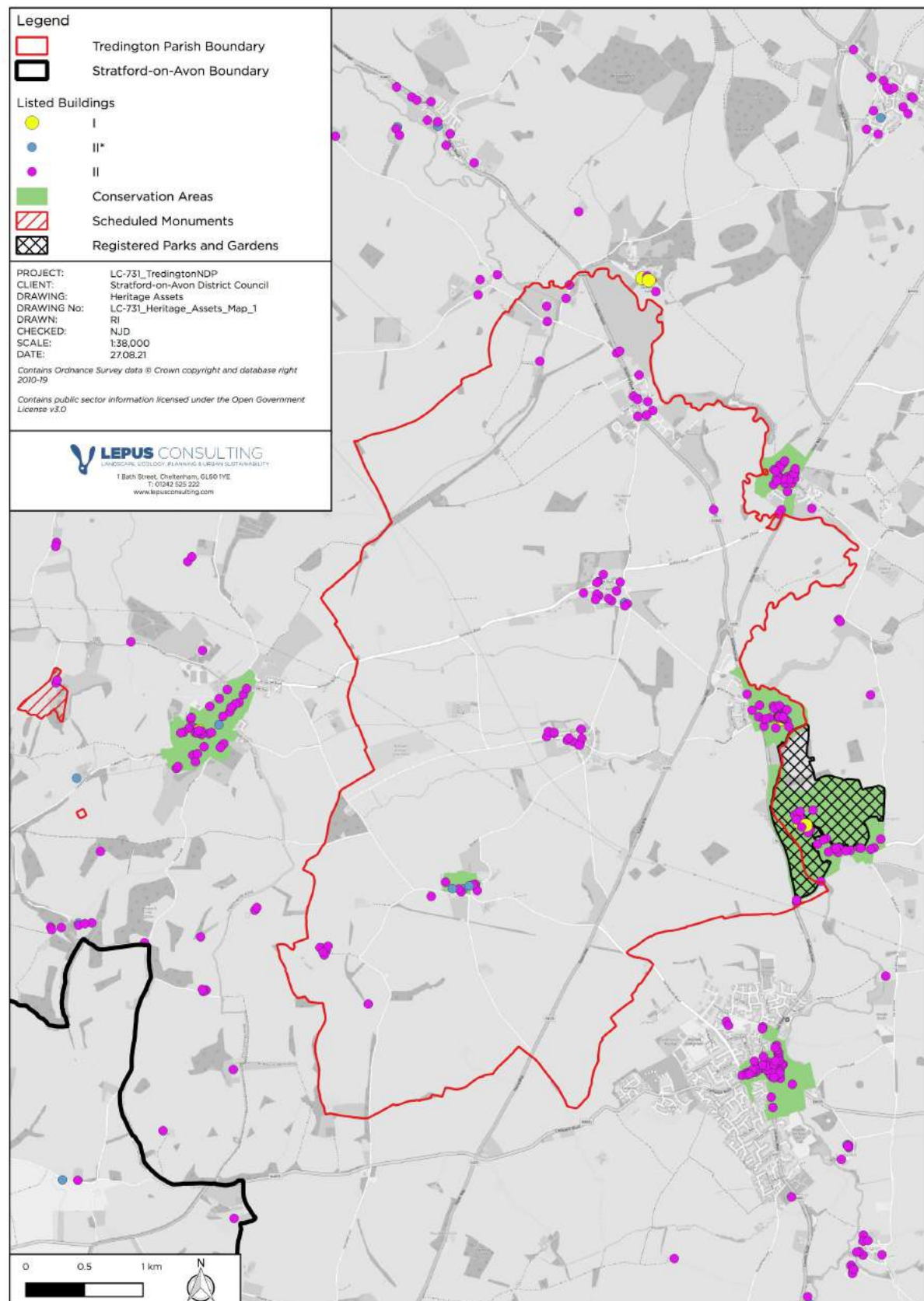


Figure 2.7: Heritage assets located in and around Tredington Parish (source: Historic England)

2.12 Landscape

- 2.12.1 A large proportion of Tredington Parish is located within the 'Dunsmore and Feldon' National Character Area (NCA)¹⁶. A key characteristic of this landscape includes *"a rural, agricultural landscape crossed by numerous rivers and tributaries"*. Additionally, a small area in the south west is within the 'Cotswolds' NCA¹⁷ which is identified by its *"steep scarp crowned by a high, open wold; the beginning of a long and rolling dip slope cut by a series of increasingly wooded valleys"*.
- 2.12.2 The Cotswolds Area of Outstanding Natural Beauty (AONB) is located approximately 80m west of the parish, as shown in **Figure 2.8**. It is likely that much of the plan area would therefore be visible from the AONB.
- 2.12.3 A Landscape Sensitivity Study has determined the sensitivity of land to housing and commercial development around Tredington village¹⁸ (see **Figures 2.9** and **2.10**) and Newbold-on-Stour village¹⁹ (see **Figures 2.11** and **2.12**). According to the study, the land surrounding the village of Tredington is of 'High' and 'High/Medium' sensitivity to housing development and the village of Newbold-on-Stour is of 'High', 'High/Medium' and 'Medium' sensitivity to housing development. Additionally, the study found that land surrounding the village of Tredington has 'High' sensitivity to commercial development and the land surrounding the village of Newbold-on-Stour has 'High' and 'High/Medium' sensitivity to commercial development.
- 2.12.4 NDP Policy NE3 seeks to protect valued landscapes within the parish, by ensuring that future developments integrate with and conserve local landscapes and their character, including the locally designated Newbold-on-Stour and Darlingscott Special Landscape Areas and the views of the Cotswolds AONB. Any future development proposals would be required to demonstrate how they will protect important views, skylines and heritage assets in line with this policy. Furthermore, Policy BE1 aims to protect the rural character of the parish community by ensuring proposals demonstrate how local character has been considered, including being of a *"density and scale that is in keeping with the character of the surrounding development and landscape"*. These policies would help to ensure that potential development related landscape impacts are mitigated and local distinctiveness is reinforced and protected.
- 2.12.5 Overall, the NDP is not expected to lead to any likely significant effects on landscape.

¹⁶ Natural England (2013) National Character Area profile: 96. Dunsmore and Feldon. Available at: <http://publications.naturalengland.org.uk/publication/4878893332824064> [Date Accessed: 25/08/21]

¹⁷ Natural England (2013) National Character Area profile: 107. Cotswolds. Available at: <http://publications.naturalengland.org.uk/publication/5900626> [Date Accessed: 26/08/21]

¹⁸ White Consultants (2012) Landscape Sensitivity Assessment of Local Service Villages (Snitterfield - Tysoe) Available at: <https://www.stratford.gov.uk/doc/205845/name/Landscape%20Sensitivity%20Assessment%20LSVs%20Snitterfield%20Tysoe.pdf> [Date Accessed: 26/08/21]

¹⁹ White Consultants (2012) Landscape Sensitivity Assessment of Local Service Villages (Mappleborough Green – North End) Available at: <https://www.stratford.gov.uk/doc/205843/name/Landscape%20Sensitivity%20Assessment%20LSVs%20Mappleborough%20Green%20North%20End.pdf> [Date Accessed: 26/08/21]

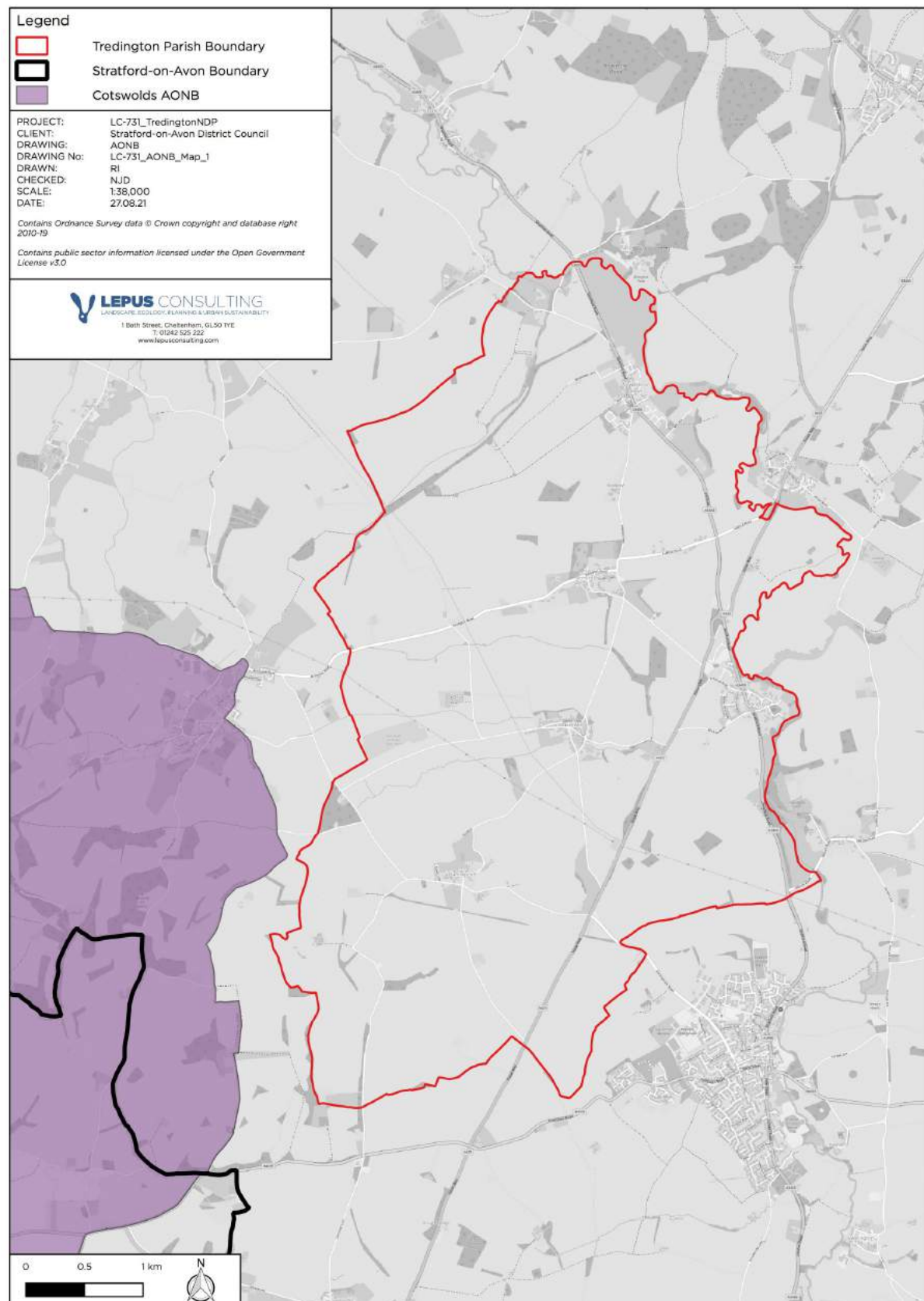


Figure 2.8: Cotswolds AONB and Tredington Parish (source: Natural England)

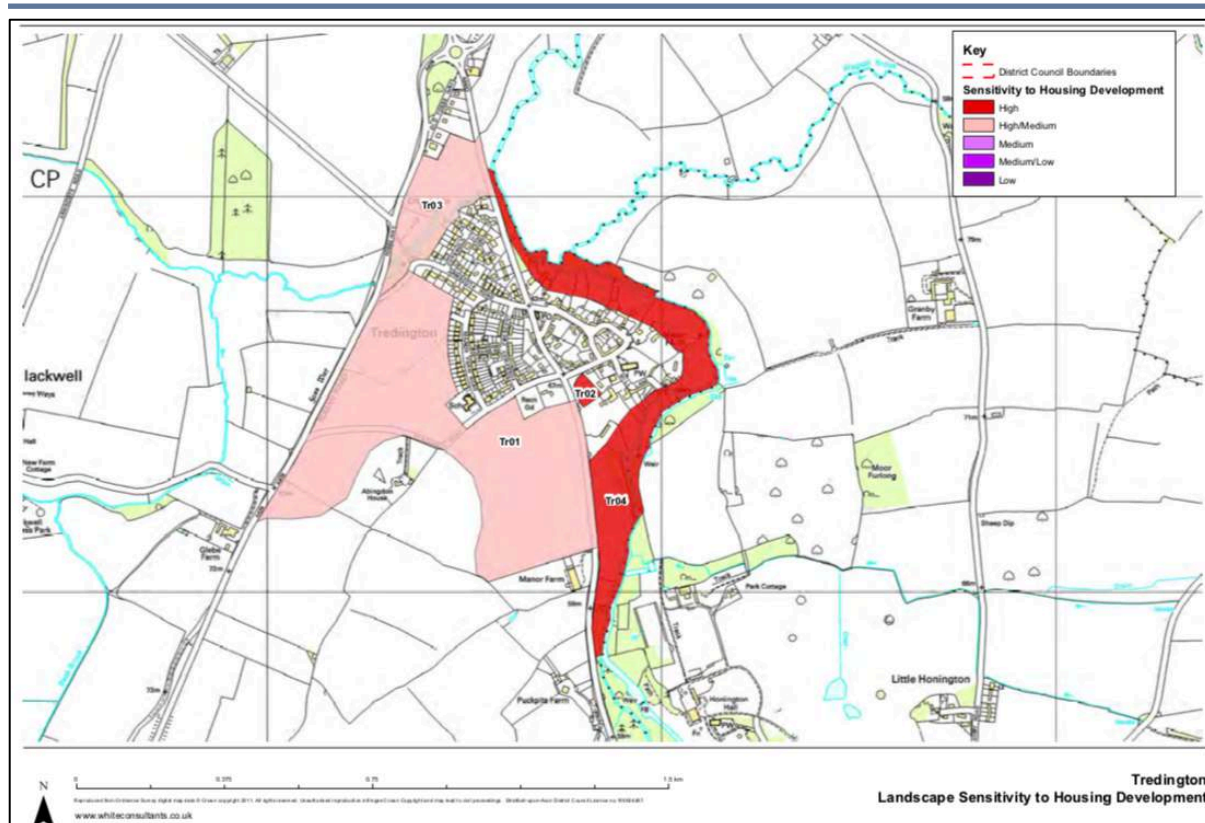


Figure 2.9: Landscape Sensitivity to Housing Development in Tredington (source: White Consultants)

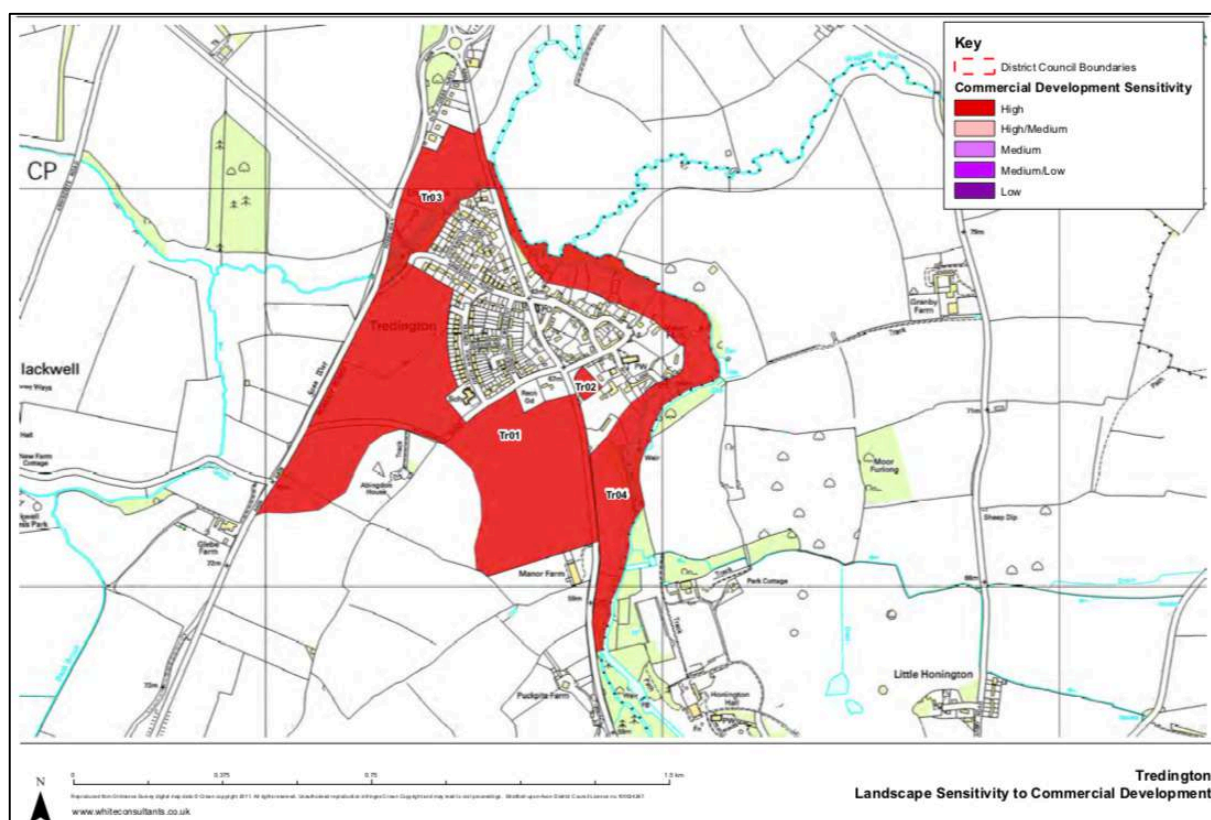


Figure 2.10: Landscape Sensitivity to Commercial Development in Tredington (source: White Consultants)

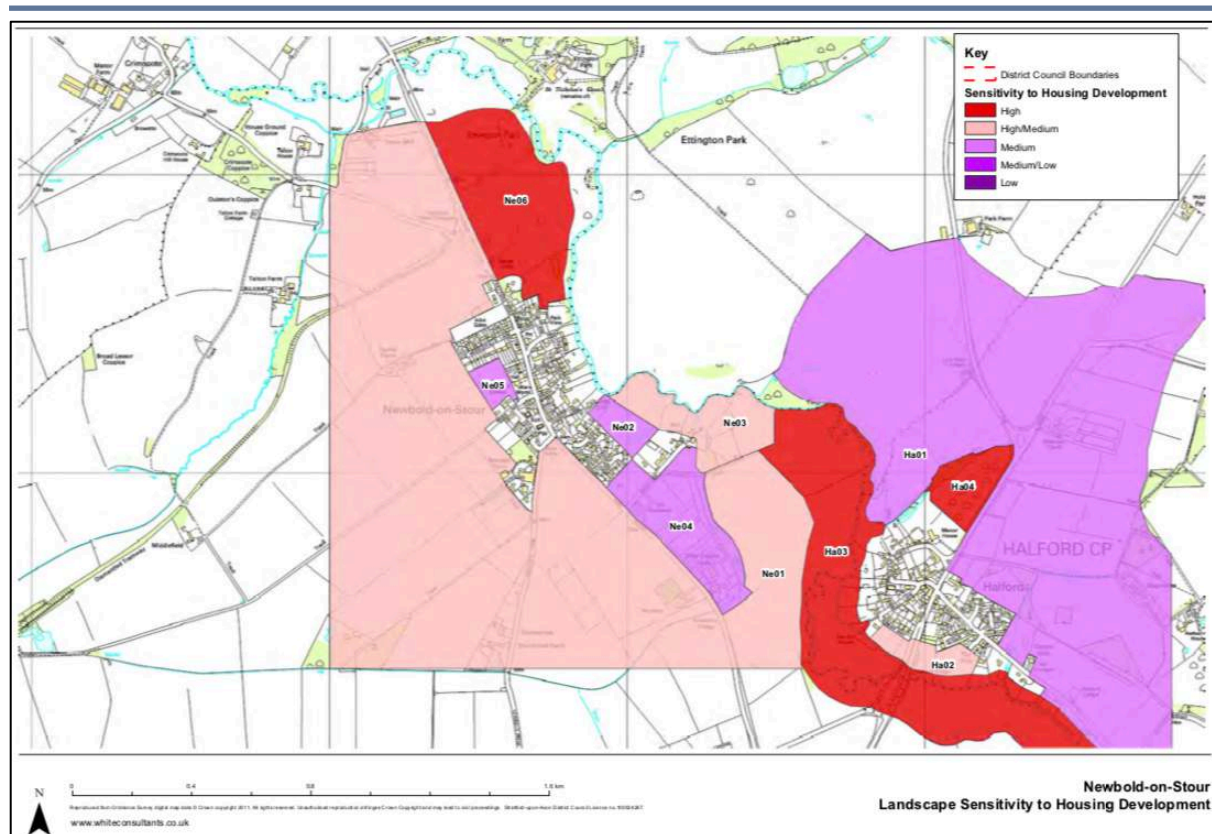


Figure 2.11: Landscape Sensitivity to Housing Development in Newbold-on-Stour (source: White Consultants)

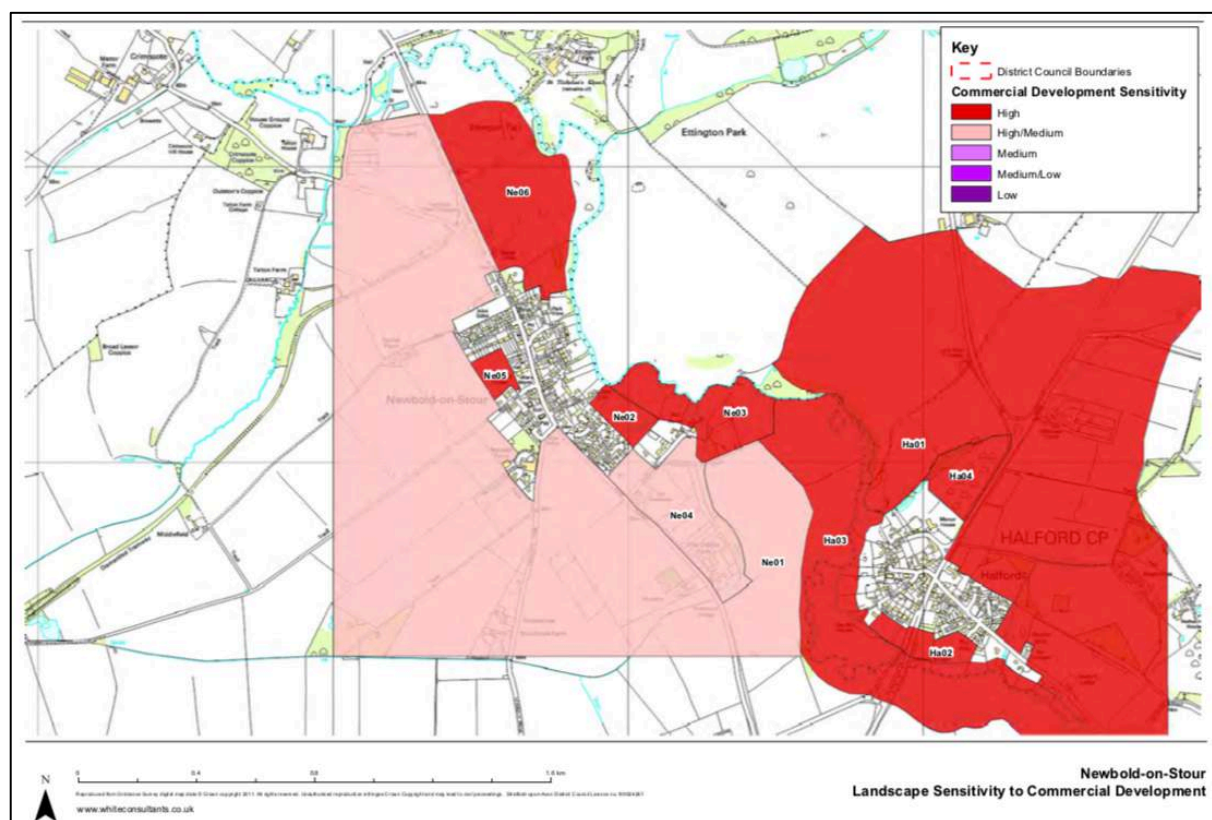


Figure 2.12: Landscape Sensitivity to Commercial Development in Newbold-on-Stour (source: White Consultants)

3 HRA Screening Process

3.1 Habitats Regulations Assessment screening

- 3.1.1 HRA screening is a requirement of Regulation 105 of the Conservation of Habitats and Species Regulations 2017²⁰.
- 3.1.2 HRA considers the potential adverse impacts of plans and projects on designated Special Areas of Conservation (SACs), classified Special Protection Areas (SPAs) and listed Ramsar sites. This is in accordance with the Habitats Directive²¹ and the Birds Directive²². SACs, SPAs and Ramsar sites are collectively known as the Natura 2000 network.
- 3.1.3 Should a development, plan or project be considered likely to have a significant impact on a Natura 2000 site, the HRA proceeds to an Appropriate Assessment. If likely significant effects cannot be avoided, mitigated or compensated to the extent that the conservation status of the EU site will not be undermined, the HRA proceeds to Imperative Reasons of Overriding Interest (IROPI).

3.2 Determination of likely significant effects

- 3.2.1 The nearest Natura 2000 site to Tredington Parish is Bredon Hill SAC, located approximately 23km to the south west of the parish. No development is currently proposed within the NDP. No impact pathways have been identified between the NDP and this Natura 2000 site, and due to the nature of the policies contained within the Core Strategy, there is unlikely to be any impact on this SAC. Based on the available information, a significant impact of the NDP on any Natura 2000 site can therefore be objectively ruled out at this stage.

²⁰ Conservation of Habitats and Species Regulations 2017. Available at: <http://www.legislation.gov.uk/uksi/2017/1012/regulation/105/made> [Date Accessed: 08/09/21]

²¹ EU Council Directive 92/43/EEC on the Conservation of natural habitats and of wild fauna and flora. Available at: <https://eur-lex.europa.eu/legal-content/EN/TXT/?uri=celex%3A31992L0043> [Date Accessed: 08/09/21]

²² EU Council Directive 2009/147/EC on the Conservation of wild birds. Available at: <https://eur-lex.europa.eu/legal-content/EN/TXT/?uri=CELEX:32009L0147> [Date Accessed: 08/09/21]

4 Conclusions

4.1 SEA Screening outcome

- 4.1.1 This screening report has explored the potential effects of the proposed Tredington NDP with a view to determining whether an environmental assessment is required under the SEA Directive.
- 4.1.2 In accordance with topics cited in Annex 1(f) of the SEA directive, significant effects on the environment are considered to be unlikely to occur as a result of the NDP.
- 4.1.3 It is recommended that the Tredington NDP should **not** be screened into the SEA process.

4.2 HRA Screening outcome

- 4.2.1 This screening report has explored the potential effects of the proposed Tredington NDP with a view to determining whether a habitats regulations assessment is required.
- 4.2.2 It is recommended that the Tredington NDP should **not** be screened into the HRA process.

4.3 Consultation

- 4.3.1 This report has been subject to consultations with Natural England, Environment Agency and Historic England. Their comments are presented in **Appendix B**.

Appendix A: Tredington NDP Policies

Policy	Policy Name
Local Economy	
LE 1	Protect Existing Employment Sites and Explore Sites for Future Employment
LE 2	Promote Rural Tourism
LE 3	Encourage the use of Community Facilities
LE 4	Encourage Home Working
Natural Environment	
NE 1	Preserve and Restore Local Habitats and Wildlife Biodiversity
NE 2	Protect Existing Mature and/or Important Trees, Hedgerows, Groups of Trees and Woodland
NE 3	Identify Valued Landscapes
NE 4	Protect Rivers and Water Courses
NE 5	Minimise Light Pollution
NE 6	Minimise Noise Pollution
NE 7	Encourage Energy Efficiency
NE 8	Minimise Air Pollution
NE 9	Designate Local Green Spaces
Housing	
H 1	Define Built Up Area
H 2	Meet Identified Housing Needs
H 3	Use of Domestic Curtilage
Built Environment	
BE 1	Develop in harmony with the Rural Character of the Communities
BE 2	Design in keeping with the Scale, Location and Appearance of Existing Buildings
BE 3	Preserve Heritage Assets and Conservation Areas
BE 4	Conversion and Reuse of Buildings
Infrastructure	
IN 1	Support home-working
IN 2	Make proper provision for the Supply of Fresh Water and Wastewater Removal
IN 3	Ensure that Roads meet the Needs and Safety of Residents
IN 4	Reduce the Risk of Flooding
IN 5	Ensure Sufficient Space is provided for Vehicle Parking.
Local Amenities	
LA 1	Protect and Enhance Existing Community Facilities
LA 2	Ensure that there is Sufficient School Capacity to Accommodate any Development
LA 3	Encourage Safe Walking and Cycling
LA 4	Promote Sports and Recreation
LA 5	Provide Allotments

Policy	Policy Name
LA 6	Promote the Improvement of Local Services
Community Infrastructure Levy	
CI 1	CIL Expenditure and Priorities

Appendix B: Consultation Responses



Direct Dial: [REDACTED]

Our ref: PL00756323
28 September 2021

Dear [REDACTED]

TREDINGTON NEIGHBOURHOOD PLAN - SEA AND HRA SCREENING

Thank you for your consultation and the invitation to comment on the SEA and HRA Screening Document for the above Neighbourhood Plan.

For the purposes of consultations on SEA Screening Opinions, Historic England confines its advice to the question, "Is it likely to have a significant effect on the environment?" in respect of our area of concern, cultural heritage.

Our comments are based on the information supplied with the screening request. On the basis of the information supplied and in the context of the criteria set out in Schedule 1 of the Environmental Assessment Regulations [Annex II of the 'SEA' Directive], Historic England concurs with your view that the preparation of a Strategic Environmental Assessment is not required.

Regarding HRA Historic England does not disagree with your conclusions but would defer to the opinions of the other statutory consultees.

The views of the other statutory consultation bodies should be taken into account before the overall decision on the need for a SEA is made. If a decision is made to undertake a SEA, please note that Historic England has published guidance on Sustainability Appraisal / Strategic Environmental Assessment and the Historic Environment that is relevant to both local and neighbourhood planning and available at: <https://www.historicengland.org.uk/images-books/publications/sustainability-appraisal-and-strategic-environmental-assessment-advice-note-8/>

I trust the above comments will be of help in taking forward the Neighbourhood Plan.

Yours sincerely,

[REDACTED]

[REDACTED]

Historic Places Advisor

[REDACTED]



THE AXIS 10 HOLLIDAY STREET BIRMINGHAM B1 1TF

Telephone [REDACTED]
HistoricEngland.org.uk



Response	Percentage
Yes, the current administration is responsible	85%
No, the current administration is not responsible	15%

Date: 21 October 2021

SEA & HRA Screening for Tredington Neighbourhood Development Plan

As requested we have reviewed the Screening Assessment prepared in support of the Tredington Neighbourhood Development Plan (NDP). Having reviewed the proposals we do not consider there to be significant environmental impacts.

Yours faithfully

Direct dial [REDACTED]

Direct e-mail: [REDACTED]

Date: 26 October 2021
Our ref: 371065
Your ref: Tredington SEA and HRA Screening



[REDACTED]
[REDACTED]
[REDACTED]
[REDACTED]
[REDACTED]

[REDACTED]
[REDACTED]
[REDACTED]
[REDACTED]
[REDACTED]
[REDACTED]

BY EMAIL ONLY

[REDACTED]

T [REDACTED]

Dear [REDACTED]

SEA and HRA Screening of Tredington's Neighbourhood Development Plan

Thank you for your consultation on the above dated 17th September 2021 which was received by Natural England on the same day.

Natural England is a non-departmental public body. Our statutory purpose is to ensure that the natural environment is conserved, enhanced, and managed for the benefit of present and future generations, thereby contributing to sustainable development.

Strategic Environmental Assessment Screening

Natural England considers that, based on the material supplied with the consultation, in so far as our strategic environmental interests are concerned, significant environmental effects resulting from the neighbourhood plan are unlikely. We therefore agree with the conclusion of the SEA screening report that a Strategic Environmental Assessment would not be required.

Further guidance on deciding whether the proposals are likely to have significant environmental effects and the requirements for consulting Natural England on SEA are set out in the [National Planning Practice Guidance](#).

Habitats Regulations Assessment Screening

Natural England welcomes the consideration given to the Habitats Regulations. We agree with the conclusion of the report of no likely significant effects on European sites, and therefore advise that further Habitats Regulations Assessment is not required:

We would be happy to comment further should the need arise but if in the meantime you have any queries please do not hesitate to contact us.

For any new consultations, or to provide further information on this consultation please send your correspondences to consultations@naturalengland.org.uk.

Yours sincerely

[REDACTED]
Consultations Team

Ecological Services

Green Infrastructure

Landscape and Visual Impact Assessment

Landscape Character Assessment

Habitats Regulations Assessment

Strategic Environmental Assessment

Sustainability Appraisal



© Lepus Consulting Ltd

1 Bath Street Cheltenham GL50 1YE

T: 01242 525222

E: enquiries@lepusconsulting.com

W: www.lepusconsulting.com

CHELTENHAM



Lepus Consulting
1 Bath Street
Cheltenham
Gloucestershire GL50 1YE

t: 01242 525222
w: www.lepusconsulting.com
e: enquiries@lepusconsulting.com