

South Warwickshire Local Plan Stakeholder Engagement

Agenda

January 2021

Agenda and Housekeeping

Agenda

1. Presentation 1 – Introduction
2. Questions
3. Presentation 2 – Scoping, Issues and Initial Options
4. Discussion

Housekeeping

- Please stay on mute unless speaking
- Use the 'hand' symbol to indicate you wish to speak
- Wait to be asked to speak before speaking and please unmute yourself
- Session limited to 1 hour

Contact Us

Stratford-on-Avon District Council:

planning.policy@stratford-dc.gov.uk

Warwick District Council:

planningpolicy@warwickdc.gov.uk



Working *Together*

South Warwickshire Local Plan Stakeholder Engagement Introduction

January 2021

Why a South Warwickshire Plan?

Review Local Plans every 5 years

- SDC Core Strategy adopted July 2016
- WDC Local Plan adopted Sept 2018

Effectiveness

- common geography
- shared challenges
- cross-boundary issues e.g. infrastructure and climate

Efficiency

- High costs of preparing Local Plans
- Local Government finances



Plan Making

- LPA responsibility to prepare a plan
- Must keep plan up-to-date and review every 5 years
- Must achieve sustainable development
- Have regard to national policy
- Duty to Co-operate???

Plan-making Stages

1. Scoping and Initial Options (consultation)
2. Issues and Options (Consultation)
3. Preferred Options (consultation)
4. Proposed Submission (consultation)
5. Submission
6. Examination
7. Main Modifications (consultation)
8. Adoption

Technical Evidence

- Green Belt Review
- Landscape Character Assessment
- Transport Assessment
- Strategic Flood Risk Assessment
- Biodiversity & Green Infrastructure
- Housing Needs Assessment
- Economic Needs Assessment
- Settlement Design Analysis
- Retail Assessment
- Sustainability Appraisal / Strategic Environment Assessment (SA/SEA)
- Habitats Regulation Assessment
- Health Impact Assessment
- Equalities Impact Assessment
- Call for Sites
- Strategic Housing Land Availability Assessment
- Climate Change Critical Friend
- Infrastructure Delivery Plan (IDP)

Governance

Body		Function
SDC Council	WDC Council	Formal approval by both Councils of Local Plan at key stages as required by constitution
SWP Executive Committee		Decision-making body to sign-off key pieces of work (e.g. technical evidence), stages of work and documents for consultation. Where necessary, it would make recommendations to the two respective full Councils for formal approval. Informed by of recommendations from scrutiny committees and the Place Board.
SDC OSC	WDC SC	Formal scrutiny of work of Executive Committee.
Place Board & Stakeholder Forums		Place Board Infrastructure Groups Developer, Parish, Citizens Forums Officer, Member Briefings
SWP Advisory Group		Working part of members from across the South Warwickshire political spectrum to provide an early steer and sounding board on the preparation of the SWP.
SWP Management Team		Meeting of Policy leads, Policy Heads of Service, Deputy Chief Executives and Policy Portfolio Holders to “sign-off” work at key stages
SWP Officer Team		Day-to-day operations of the SWP. Report to the respective Policy Managers on a weekly basis.

South Warwickshire Place Board

SDC, WDC, WCC, CWLEP, WMCA, CW Chamber of Commerce, Shakespeare's England, Warwickshire Rural Community Council, WALC, Stratforward, Leamington BID, Cotswolds AONB Conservation Board, Warks CPRE, Alcester TC, Kenilworth TC, Leamington TC, Shipston-on-Stour TC, Southam TC, Stratford-upon-Avon TC, Warwick TC, Witnash TC, CWIP, CWGBIP, CWCIP, Developer Forum, River Severn Partnership, University of Warwick, University of Birmingham, VASA, P3, FSB, CW Growth Hub, WM Growth Company

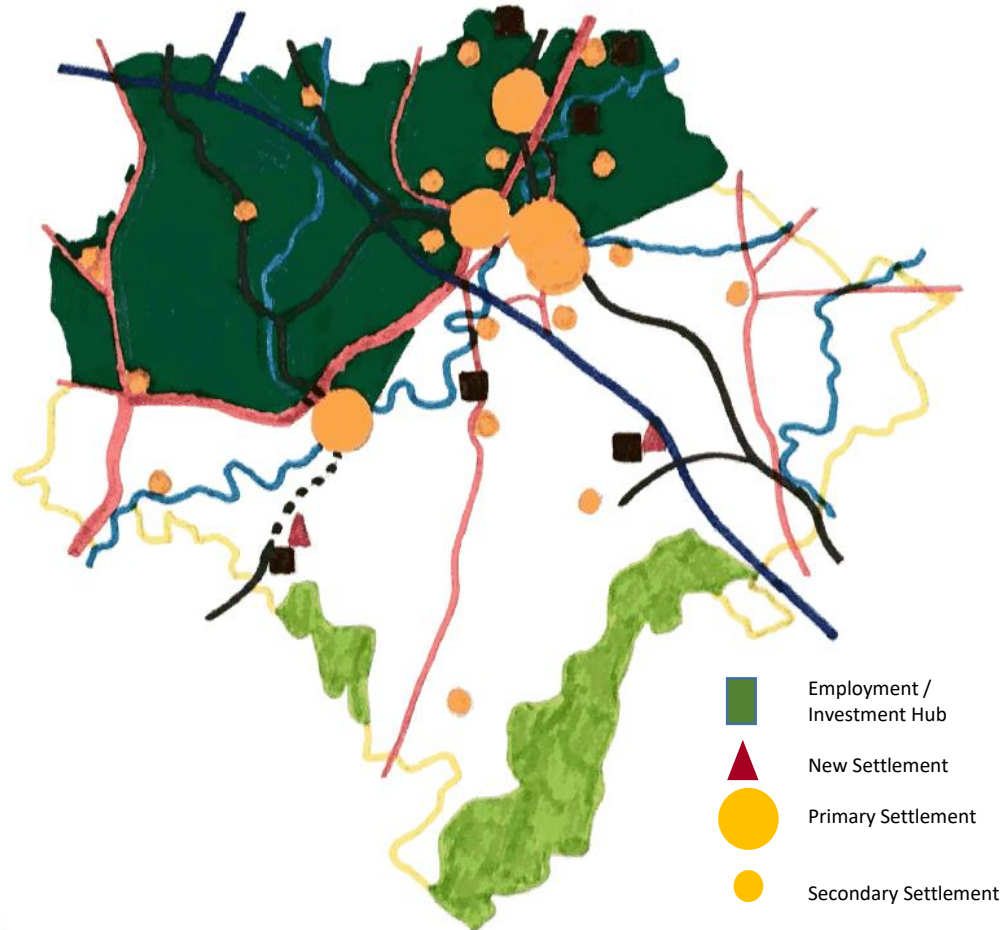
CW Infrastructure Partnership	CW Green & Blue Infrastructure Partnership	CW Community Infrastructure Partnership	Developer Forum	Citizens Forum	Parish Forums
<p>Highways England Network Rail Midlands Connect WCC Highways WCC Public Transport WCC Transport Planning CCC Highways CCC Public Transport CCC Transport Planning Chiltern Railways West Midlands Trains London Northwestern Railway Great Western Railway Heart of England Community Rail Partnership Campaign for Better Transport <u>Bus Operators</u> Western Power National Grid Gas National Grid BT Open Reach BDUK Cadent Gas Act on Energy</p>	<p>Natural England Environment Agency WCC Lead Local Flood Authority Warwickshire Wildlife Trust WCC Ecology CCC Ecology Severn Trent Cotswolds AONB Conservation Board Thames Water Canal & River Trust Sport England WCC Archaeology CCC Archaeology Historic England Friends of the Earth Woodland Trust Local Nature Partnership</p>	<p><u>Colleges</u> CCC Education WCC Education Sport England WCC Communities CCC Communities ThinkActive Everyone Active CW NHS Trust South Warks NHS Trust South Warks CCG CW CCG Oxford CCG Diocese of Gloucester Diocese of Coventry Age UK Citizens Advice Warwickshire Police Warwickshire Fire & Rescue West Midlands Police West Midlands Fire & Rescue West Midlands Ambulance Trust CCC Public Health WCC Public Health</p>	<p><u>Key Housebuilders</u> <u>Key Housing Associations</u> Homes England National Housing Federation Home Builders Federation Land Promoters Group Civic Voice MADE <u>Key Employment Developers</u> Country Land & Business Association</p>	<p>SDC & WDC Citizens Panel SDC & WDC Youth Parliament</p>	<p>Avon Arden Itchen Leam Stour</p>



South Warwickshire Local Plan Stakeholder Engagement Scoping

January 2021

South Warwickshire Geography



Population (2019)	273,851
Working Age	159,600
Economically Active	83.6%
Area	488 SqMi
Green Belt	32.7%
AONB	8%

South Warwickshire Geography

Stratford-on-Avon District

Main Town (1)

Main Rural Centres (8)

Category 1 Local Service Villages (5)

Category 2 Local Service Villages (10)

Category 3 Local Service Villages (10)

Category 4 Local Service Villages (19)

Warwick District

Urban Areas (4)

Growth Villages (10)

Limited Infill Villages (24)



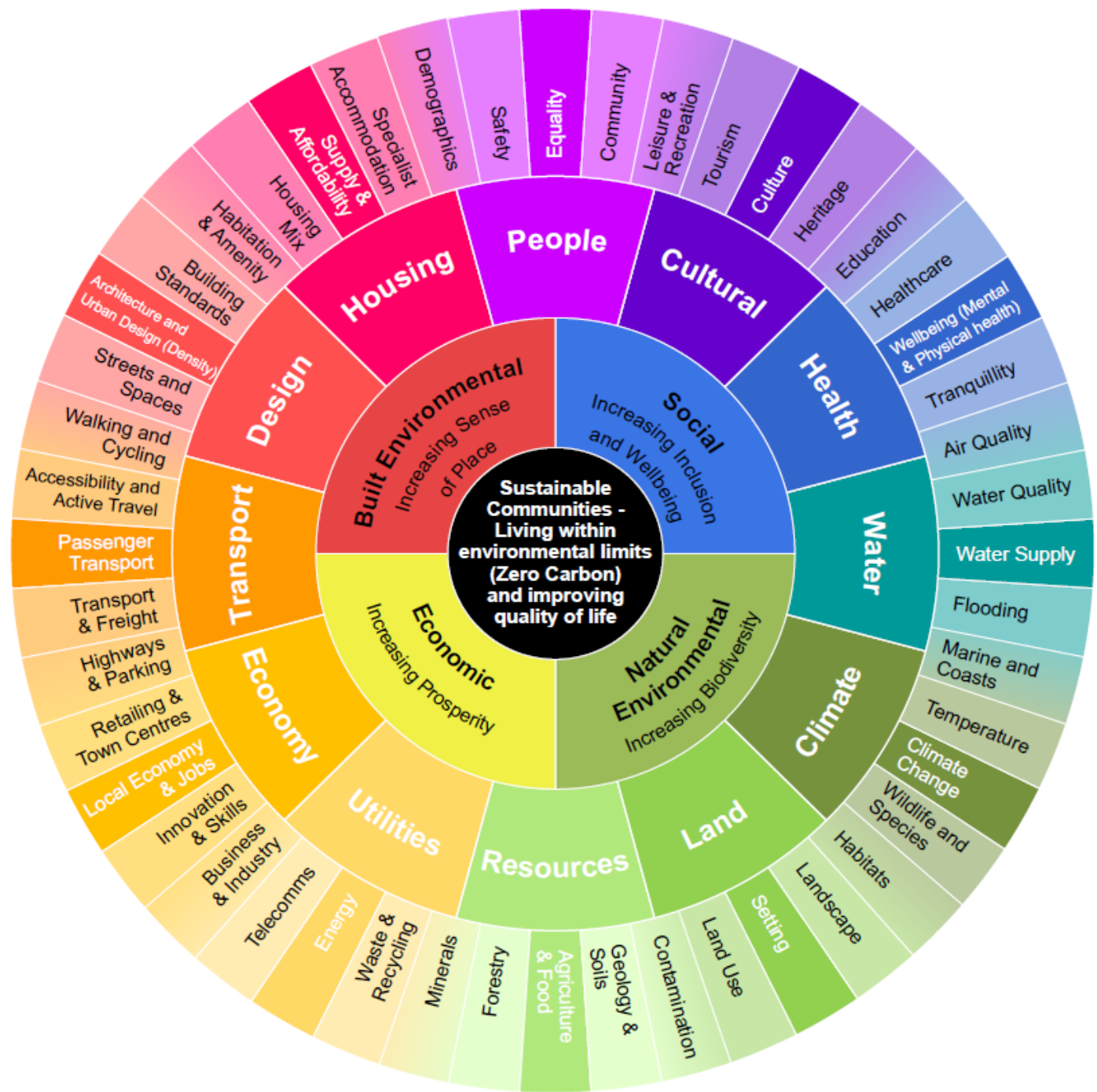
Working *Together*

South Warwickshire Geography

Stratford-on-Avon District		Warwick District	
Stratford-upon-Avon	27,445	Royal Leamington Spa	49,662
Southam	6,567	Warwick	31,345
Alcester	6,273	Kenilworth	22,413
Studley	5,879	Whitnash	9,129
Wellesbourne	5,849		
Bidford-on-Avon	5,350		
Shipston-on-Stour	5,038		
Henley-in-Arden	3,001		
Kineton	2,337		



Working *Together*



Key Issues and Challenges (1)

Built Environment

- Different existing strategic spatial strategies
- Accessibility and connectivity (all scales)
- Edge conditions
- Design standard
- Affordable housing requirements (35-40%)
- Specialist accommodation

Social

- Timing of education provision relative to new homes occupied
- Ageing population and dementia esp rural issues
- Air quality
- Quality and condition of housing
- Affordability
- GP & Hospital capacity
- Tourism – lack of visitor accommodation



Key Issues and Challenges (2)

Economic

- Transport – modal shift, active travel and “last mile”
- Rural isolation
- Night-time economy – requires local residents
- Role of town centres and high streets
- Employment/economic development
- Utilities – 5G, power

Natural Environment

- Protect most valuable and fragile environments
- Landscape
- Climate change
 - Temperature increase
 - Flooding

Vision

- Need to develop a vision for the Plan which sets out how we want to see the area grow and evolve over the plan period
- This will be different for everyone, but common themes will be shared by all.
- Need a vision which reflects that changes will happen, and we want to manage that to achieve the best outcome for South Warwickshire.
- The vision should succinctly set out what South Warwickshire will be like / how it has changed at the end of the plan period.

Scope of Plan

- Informed by assessment of “up-to-dateness” of SDC Core Strategy and WDC Local Plan
- South Warwickshire Plan = plural
- Part 1 – strategic policies & development strategy
- Part 2 – detailed policies
- Part 3 – specific allocations
- Role of NDPs



Scope of Part 1

Definitely In	<ul style="list-style-type: none">▪ Development strategy including spatial strategy▪ Place shaping and visions for towns▪ Levels of housing and employment growth▪ Directions of growth▪ Strategic infrastructure	<ul style="list-style-type: none">▪ Major green belt revisions▪ Climate change policies▪ Strategic employment and housing allocations▪ Strategic Green and Blue Infrastructure
Possibly In	<ul style="list-style-type: none">▪ Major allocations▪ Strategic town centre policies▪ Employment land policies▪ Affordable housing	<ul style="list-style-type: none">▪ Improving accessibility and connectivity▪ Landscape character▪ Historic environment
Out	<ul style="list-style-type: none">▪ Non strategic town centre policies (e.g. retail frontages)▪ Non strategic allocations (including small allocations in villages)▪ Local development management policies	<ul style="list-style-type: none">▪ Detailed local policies e.g. parking, open space▪ Policies for specific sites except where these relate to strategic allocations or revisions to the Green Belt

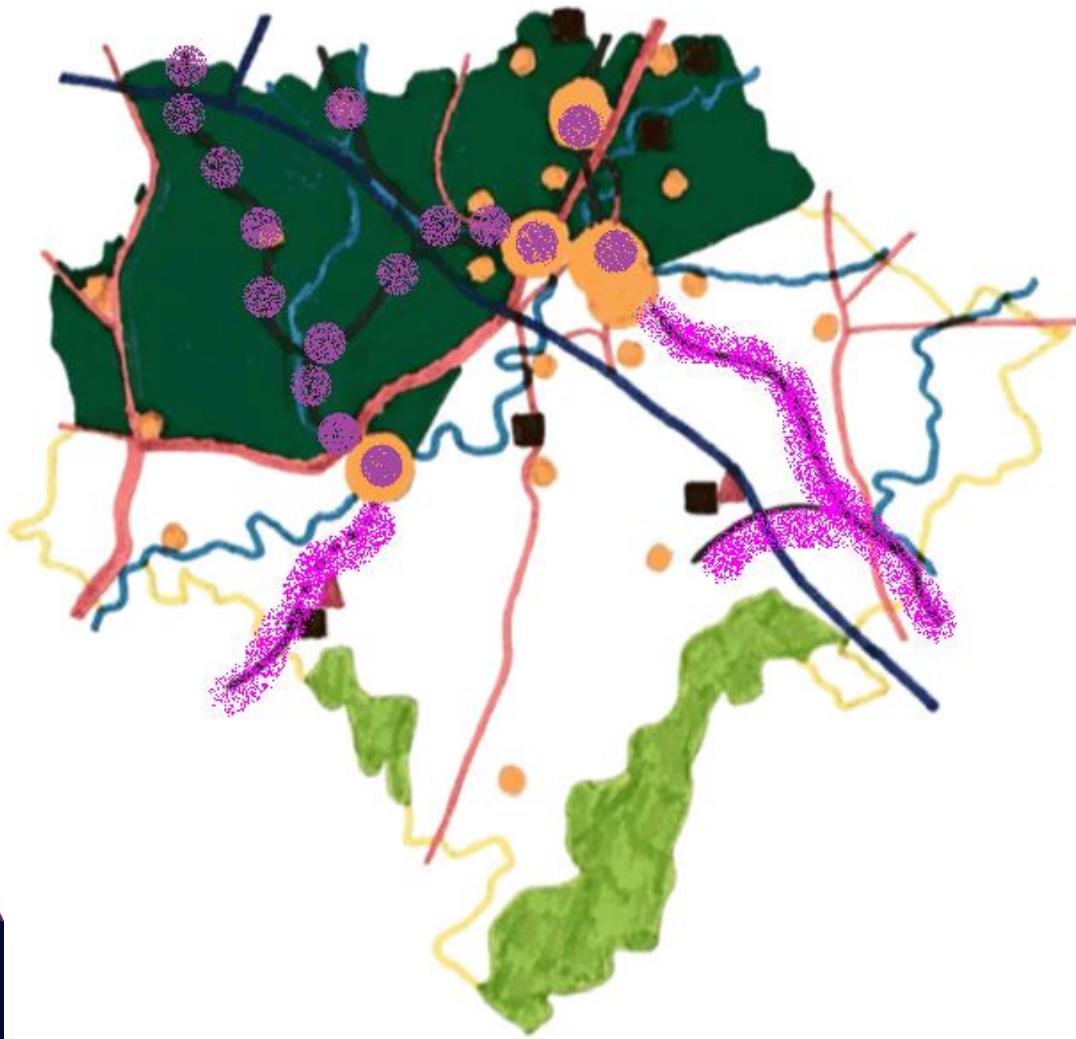
Initial Spatial Concepts

- A. Rail corridors
- B. Road corridors
- C. Main Bus Corridors
- D. Enterprise Hubs
- E. Housing Waiting List
- F. Main Urban Areas
- G. Dispersed
- H. Densification (inc. brownfield & empty homes)

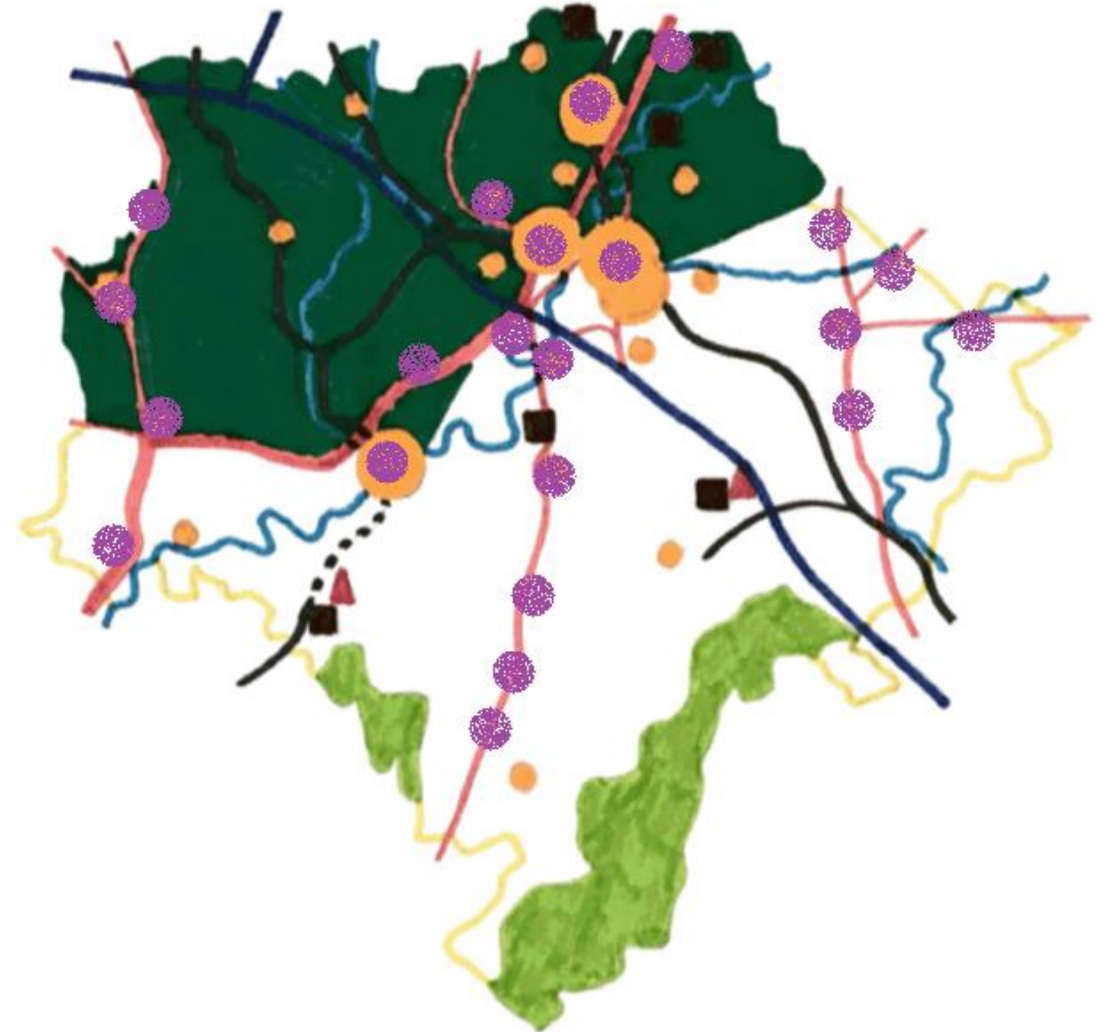
	Local Plan	Standard Method
SDC	730	603
WDC	932	627
Annual Total	1,662	1,230

- Local Plan numbers include contributions towards Birmingham and Coventry
- Standard Method numbers are MINIMUM

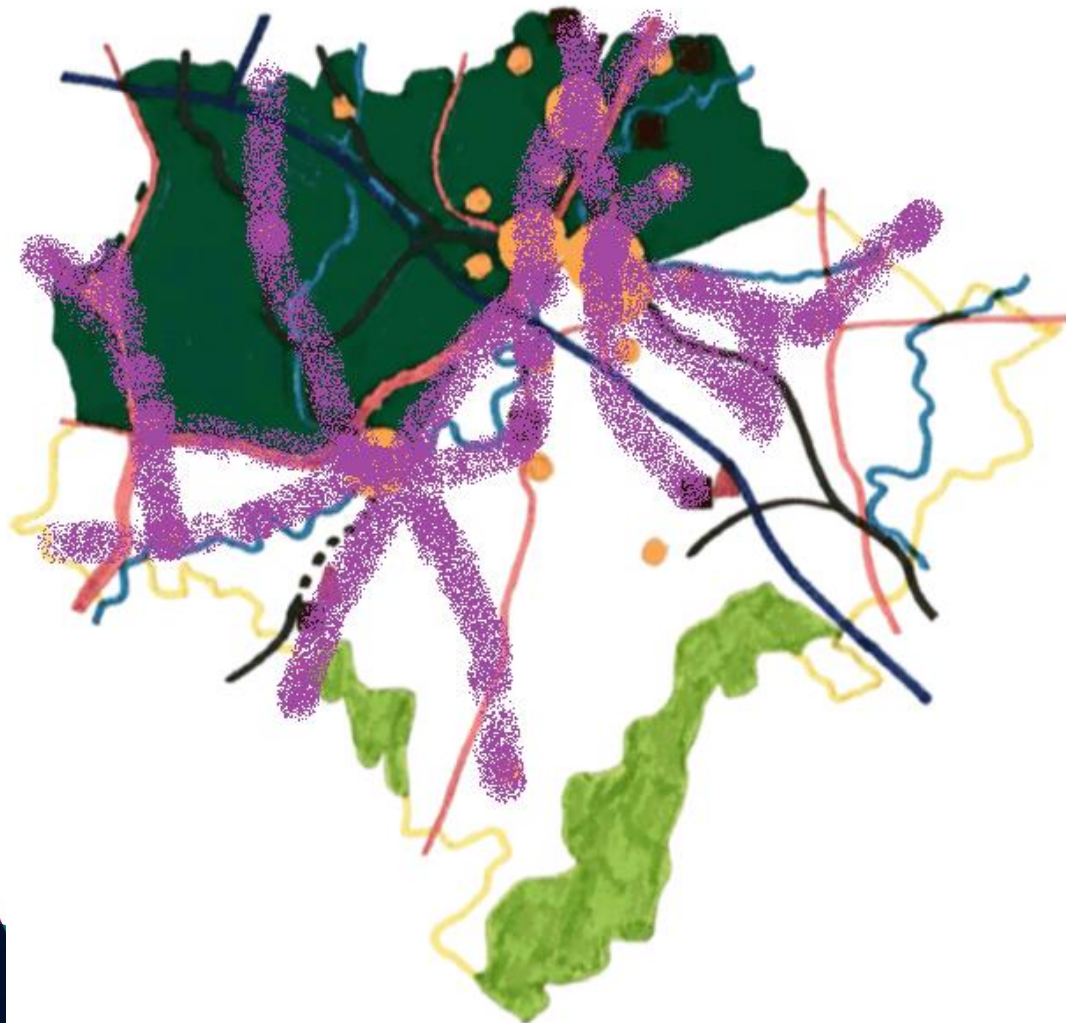
Rail Corridors



Road Corridors



Bus Corridors



Enterprise



Urban Areas



Dispersed

