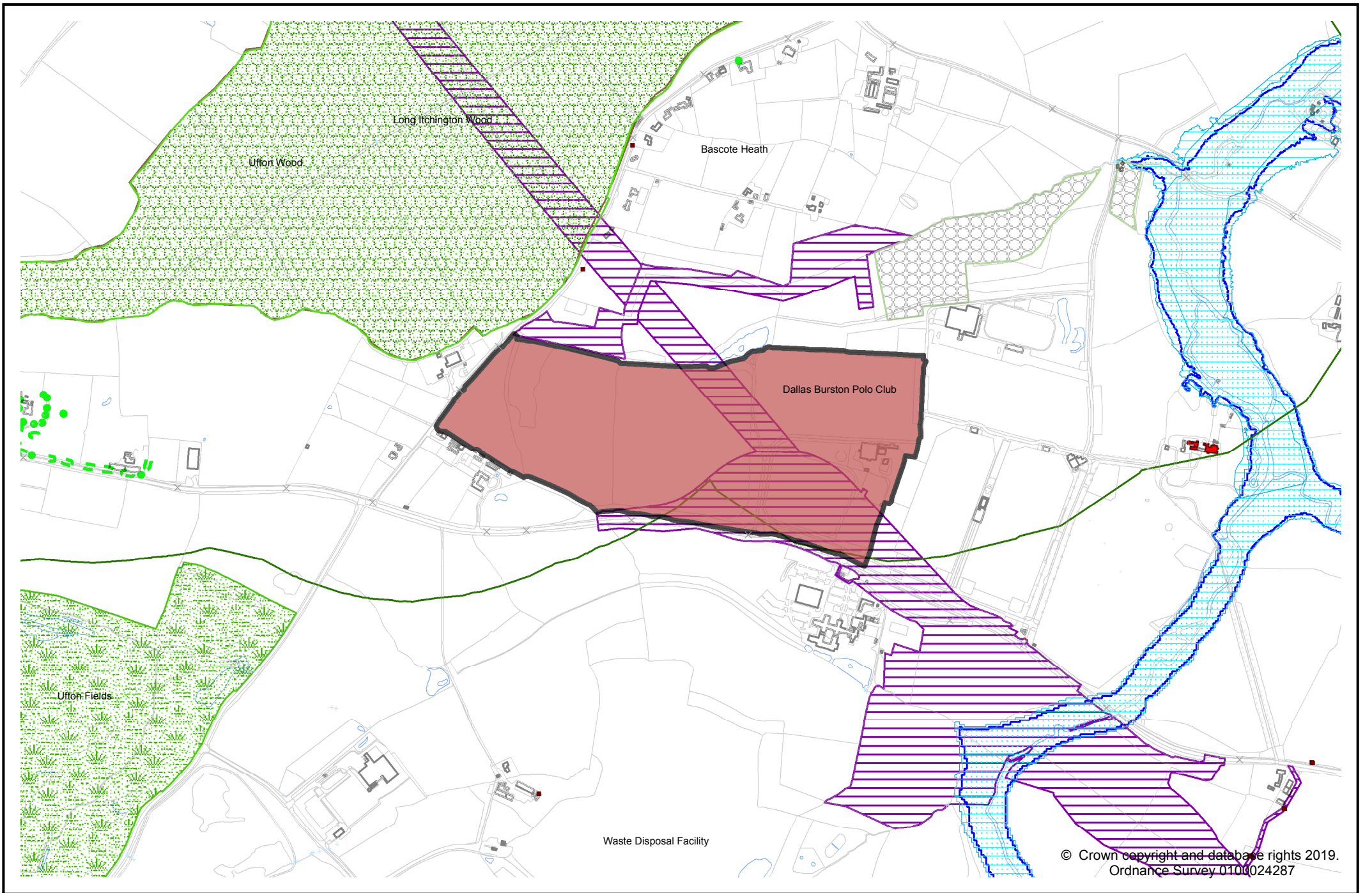
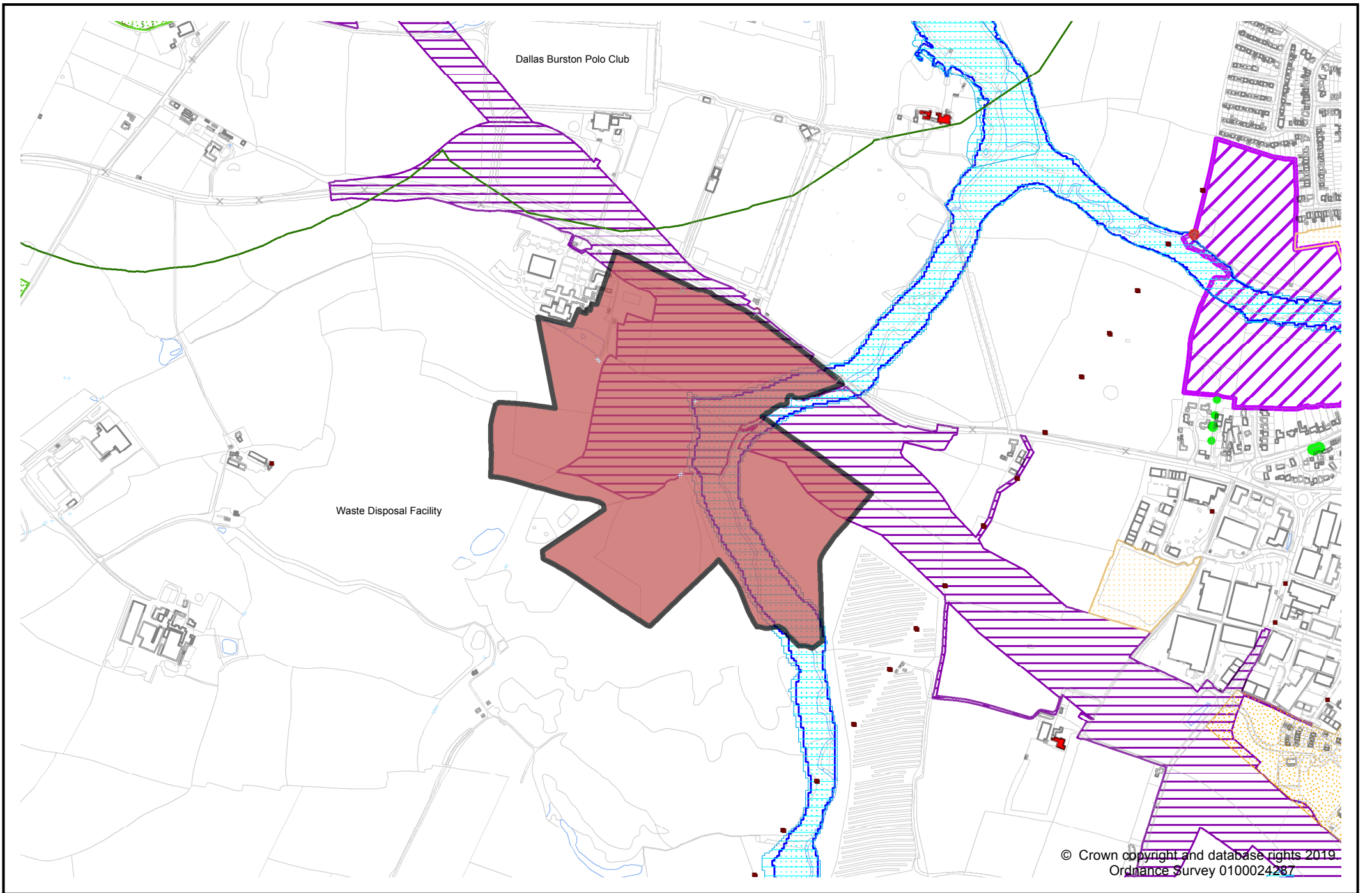


Appendix 3

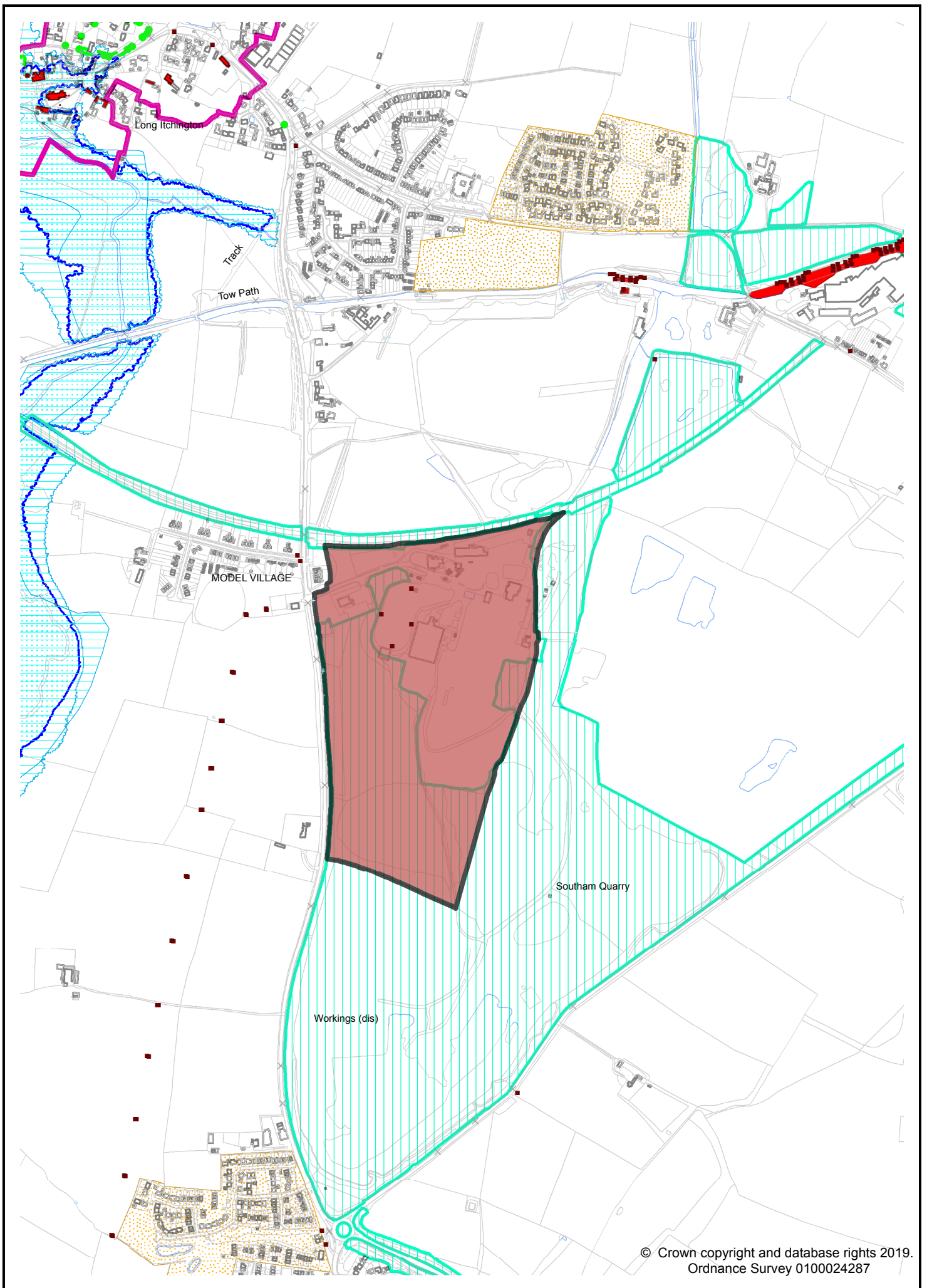
SHLAA Land Parcels Assessment – Large Scale Locations



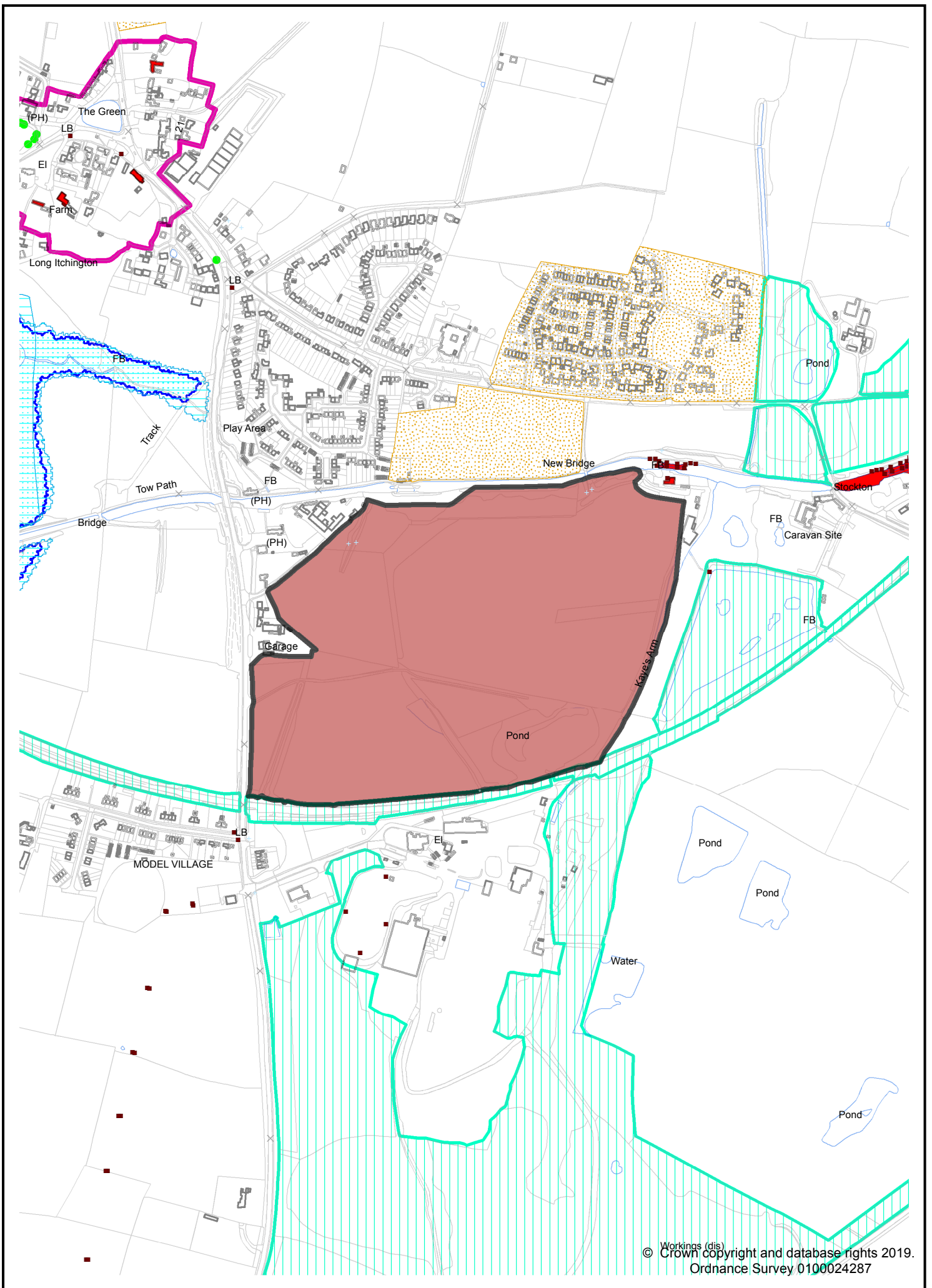
Site LSL.01 - Dallas Burston Polo Ground (West of Southam)



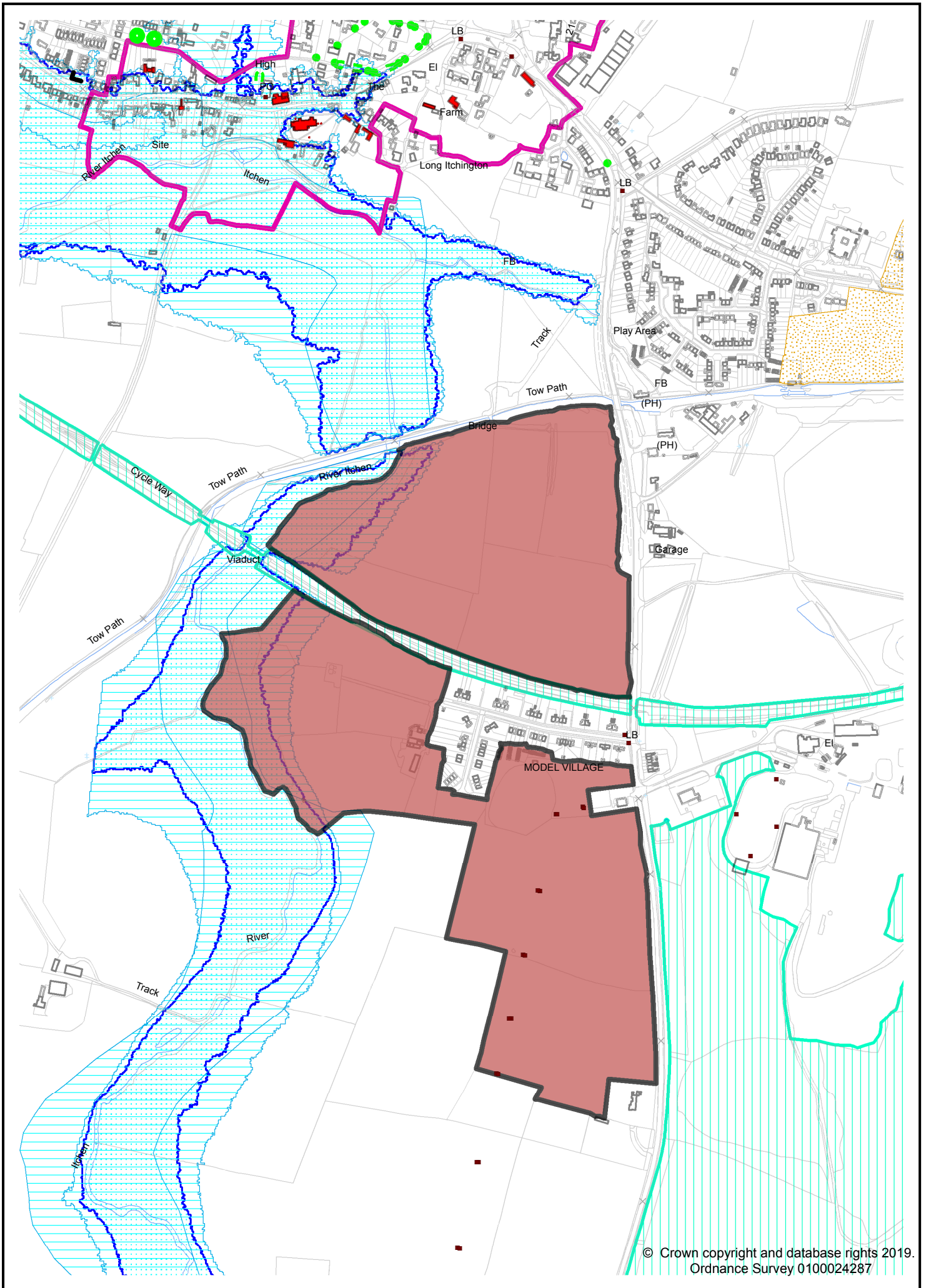
Site LSL.02 - Lower Farm, Stoneythorpe (West of Southam)



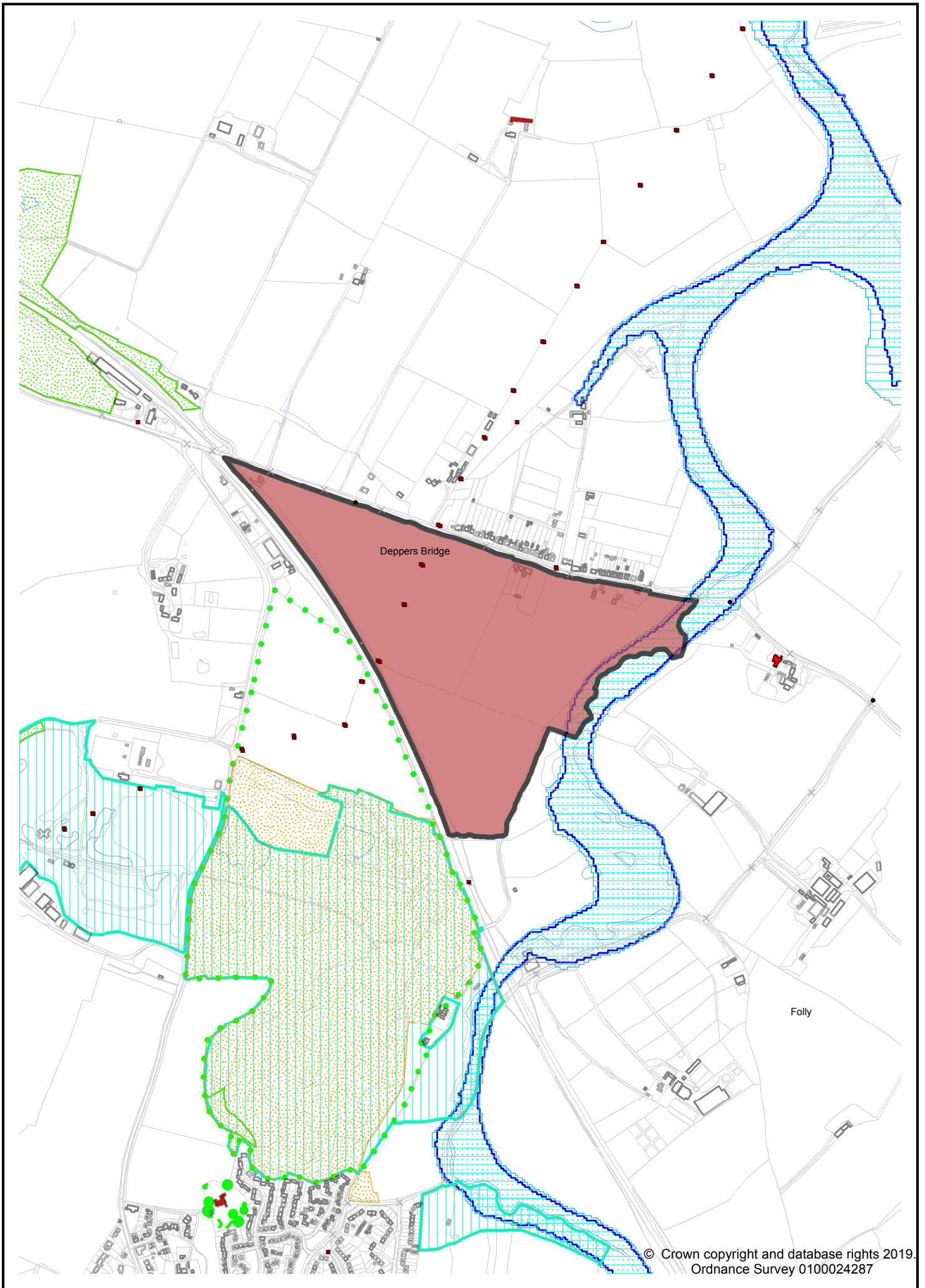
Site LSL.03A - Former Southam Cement Works



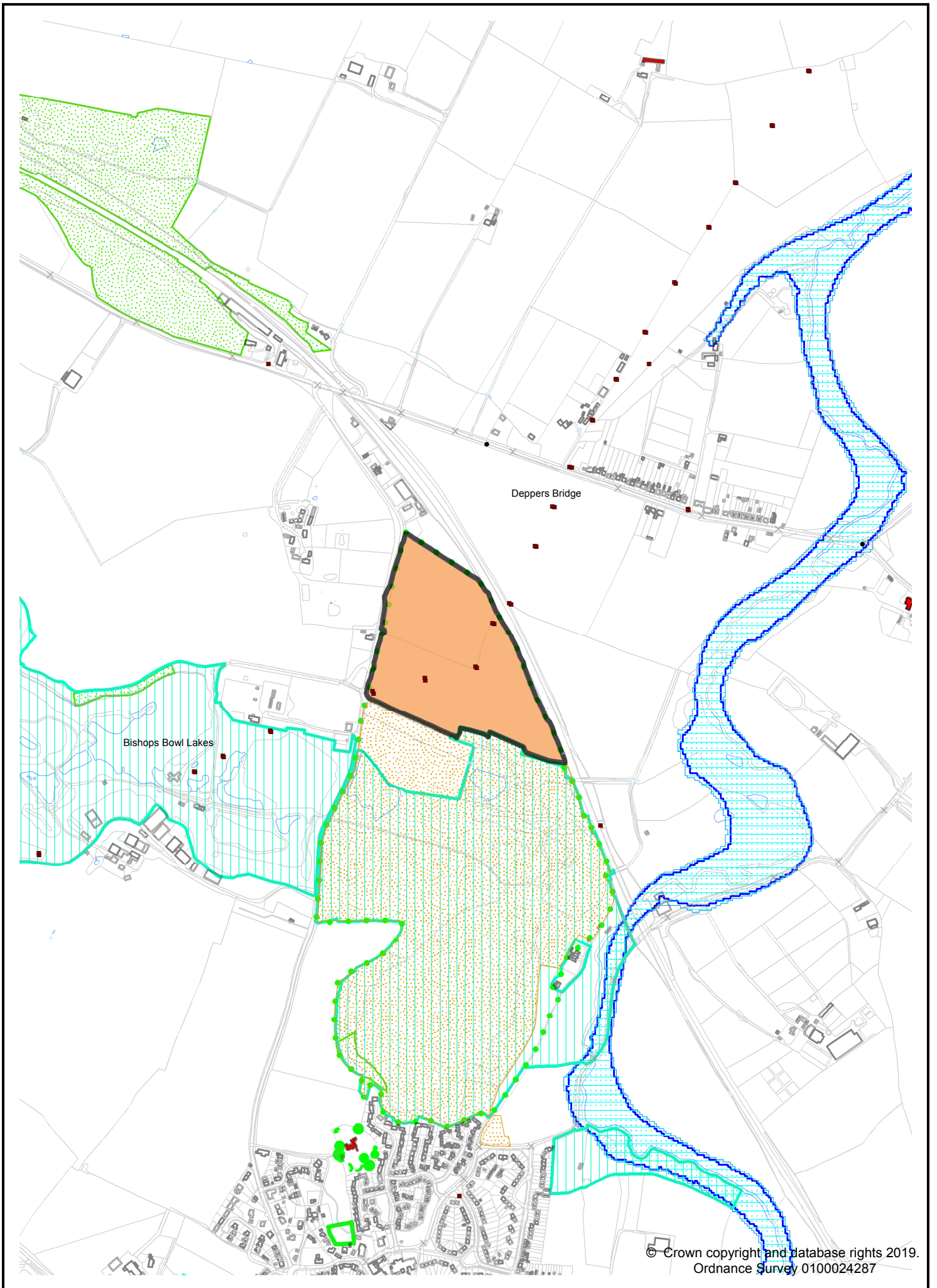
Site LSL.03B - North of former Southam Cement Works



Site LSL.03C - West of Southam Road, Long Itchington

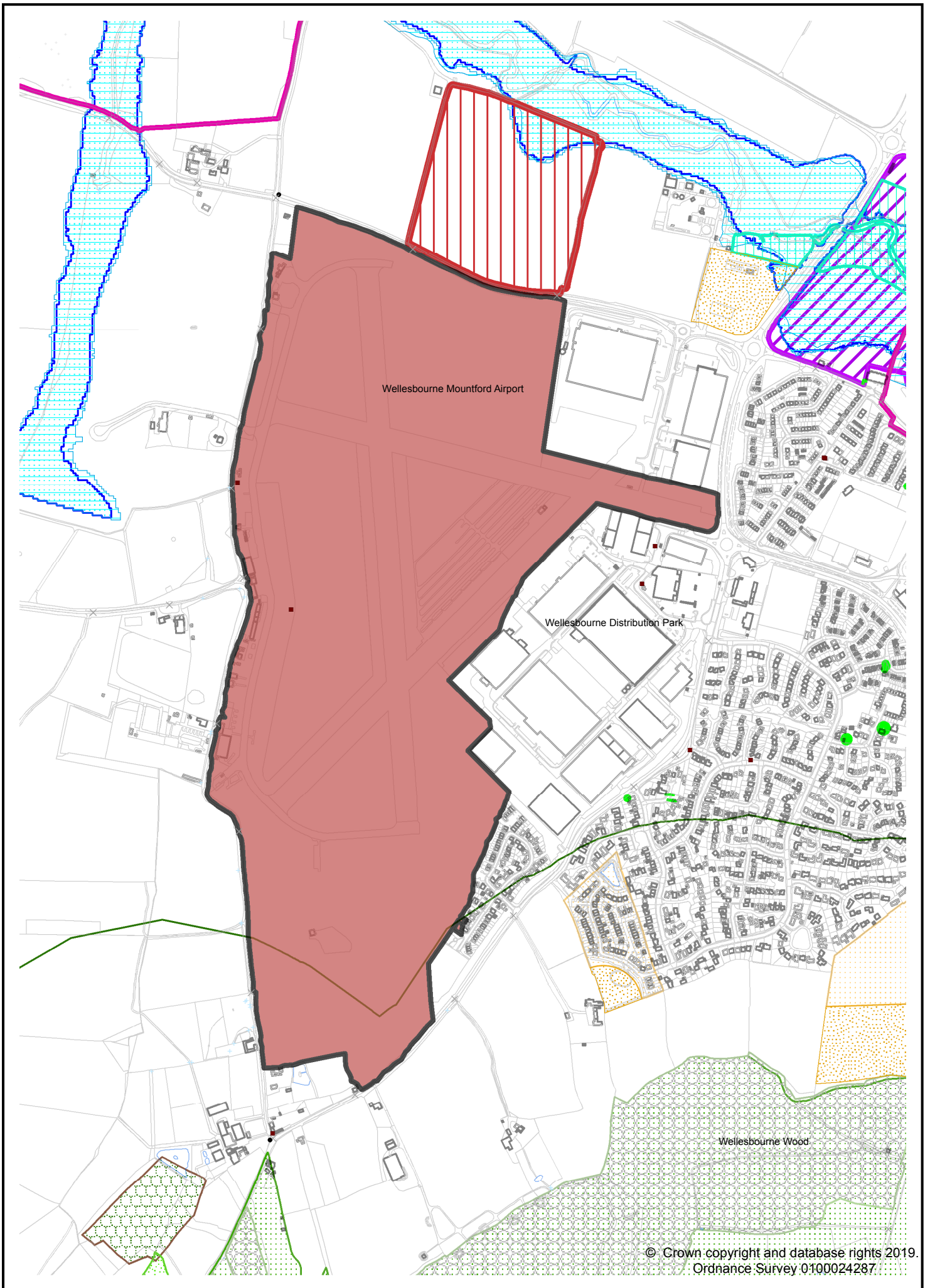


Site LSL.04A - South of Deppers Bridge, Harbury



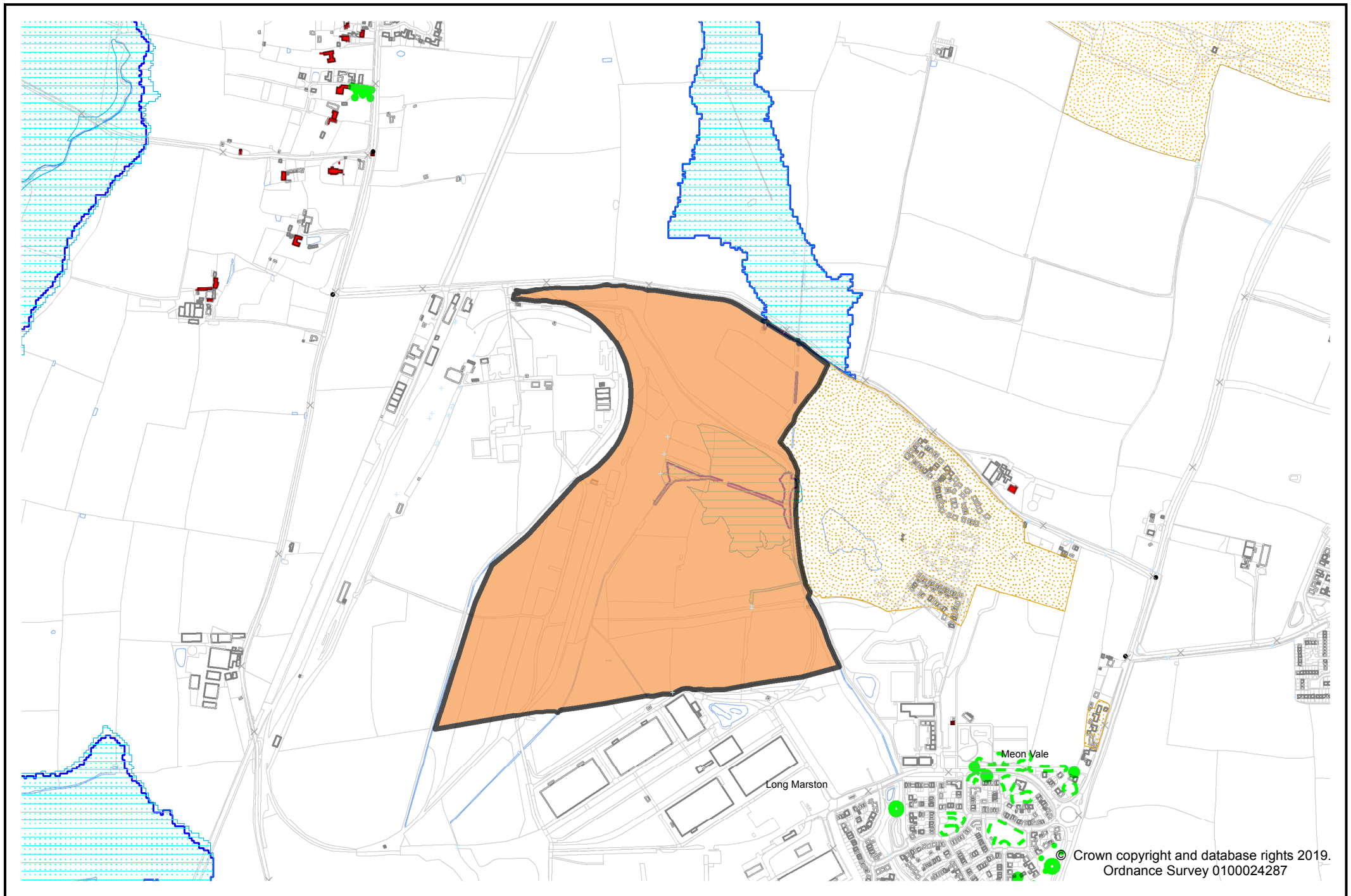
© Crown copyright and database rights 2019.
Ordnance Survey 0100024287

Site LSL.04B - North of Former Harbury Cement Works

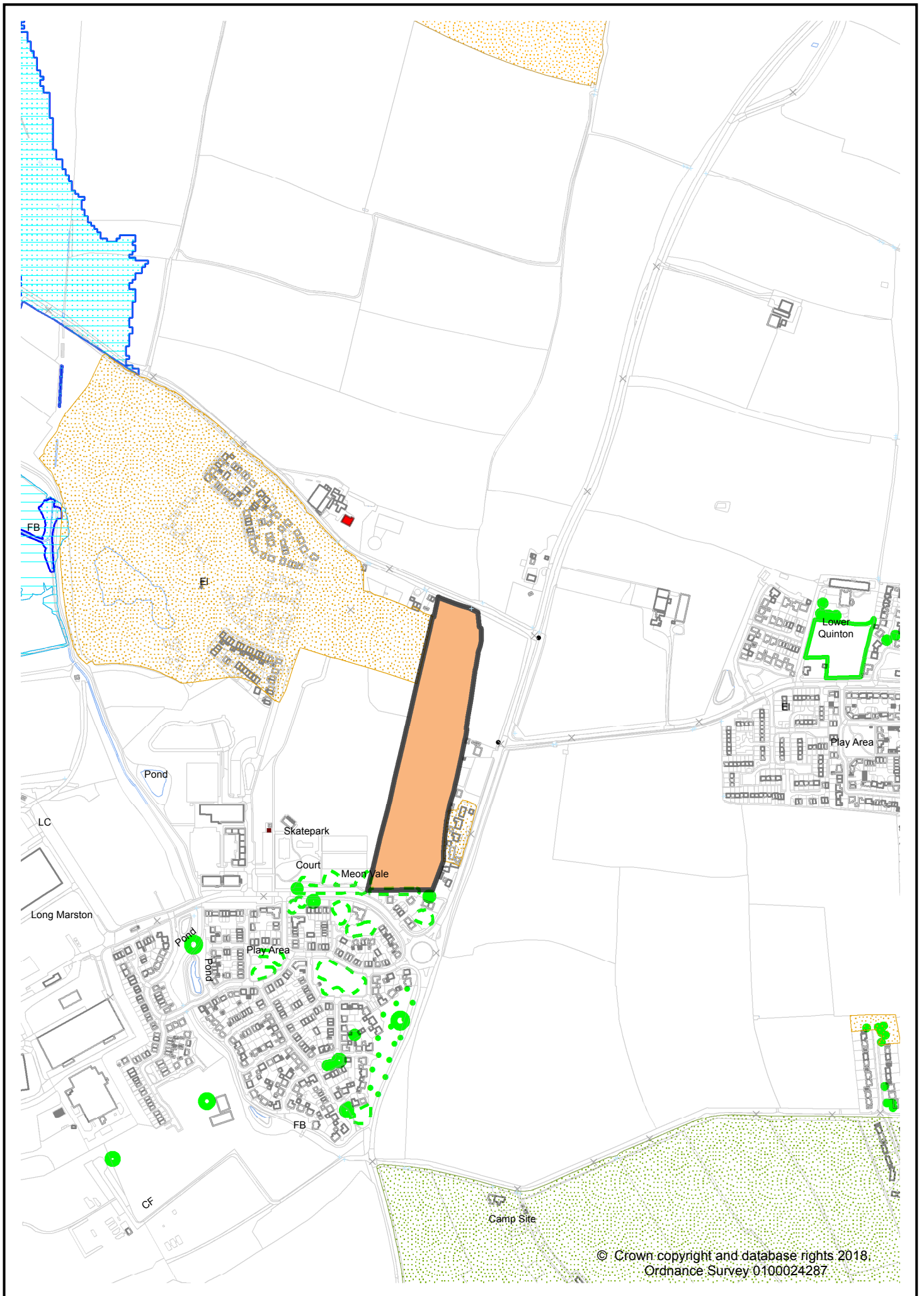


© Crown copyright and database rights 2019.
Ordnance Survey 0100024287

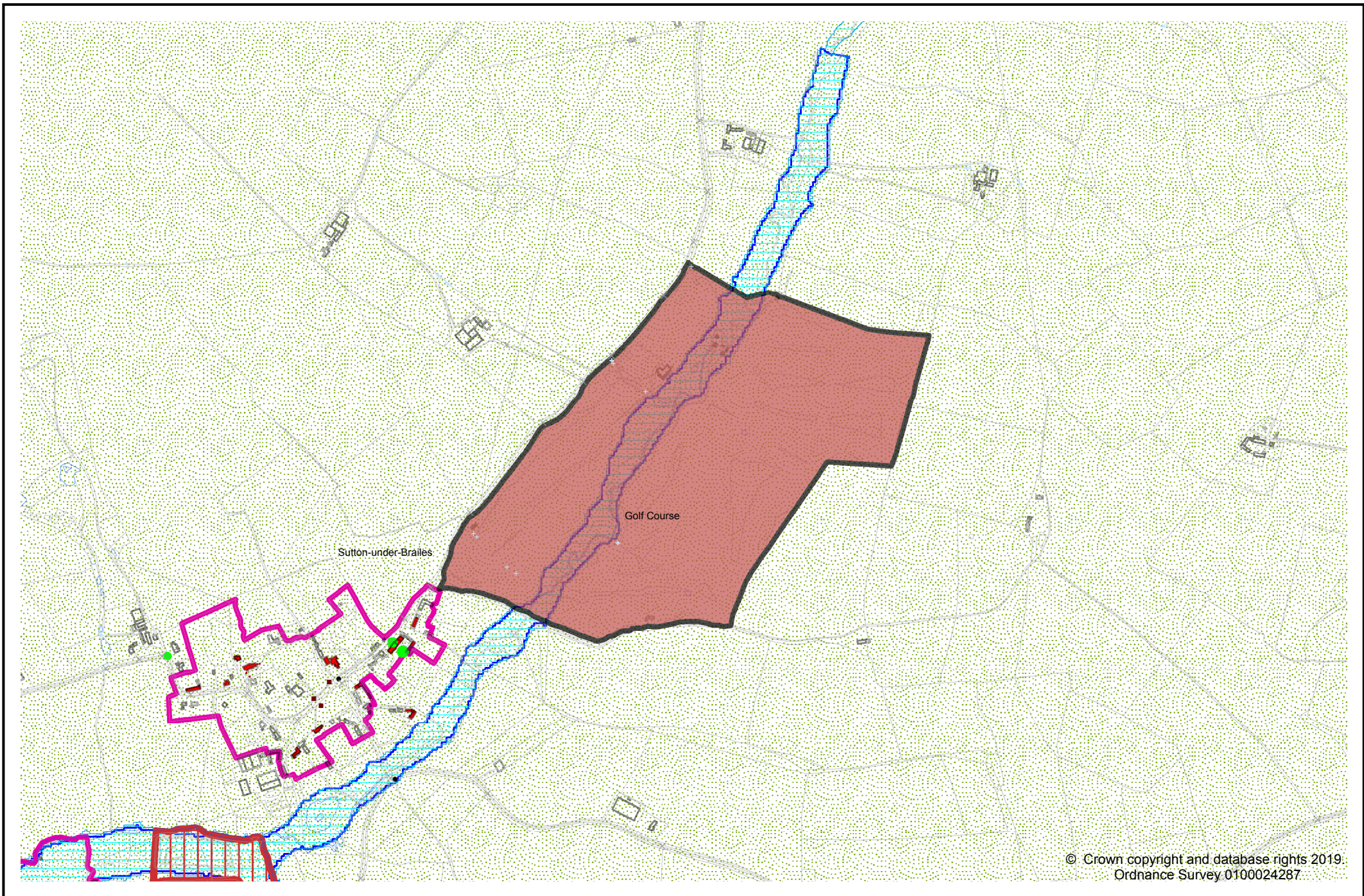
Site LSL.05 - Wellesbourne Airfield



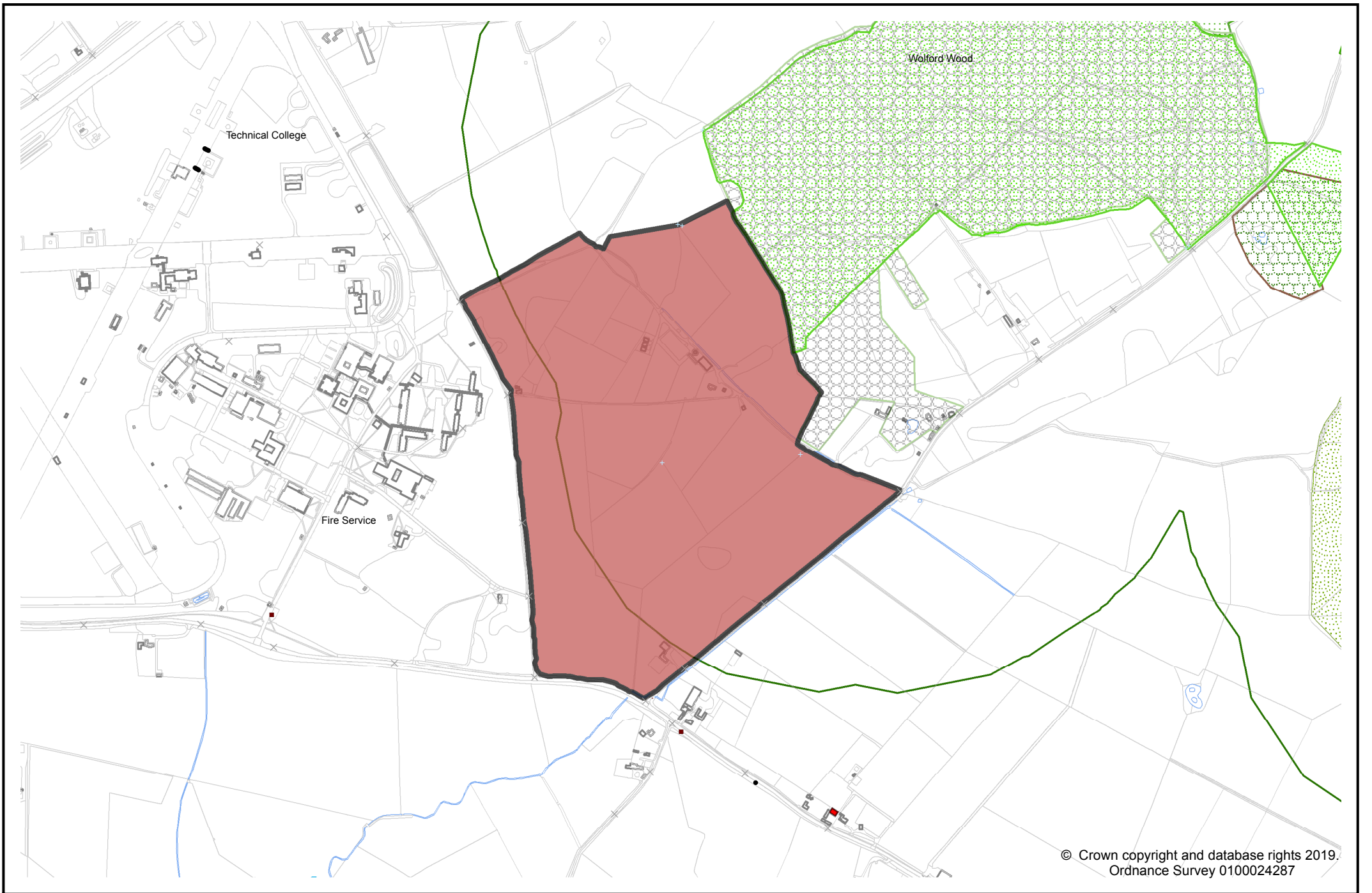
Site LSL.06A - Former Long Marston Depot



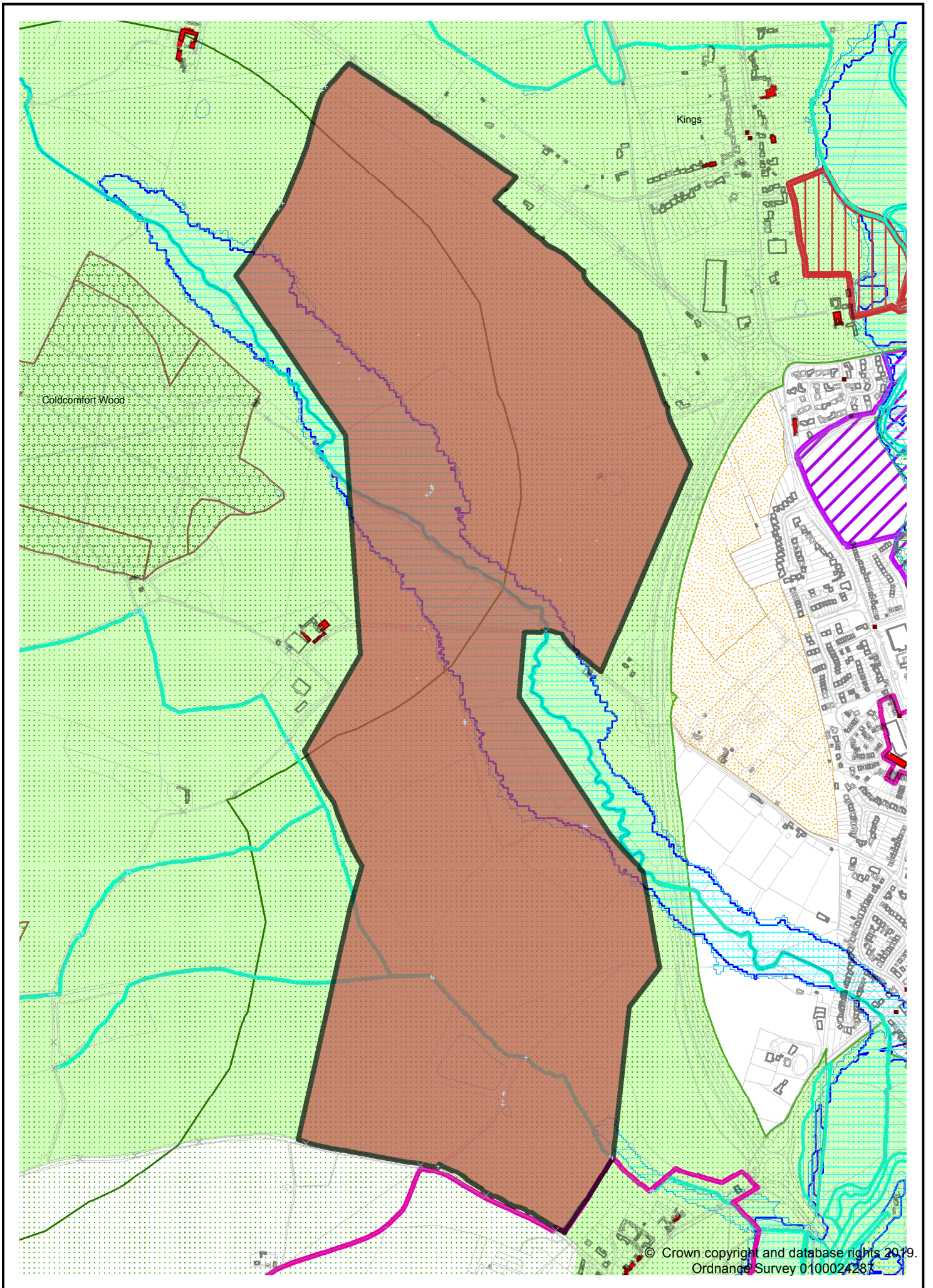
Site LSL.06B - Adjacent former Long Marston Depot



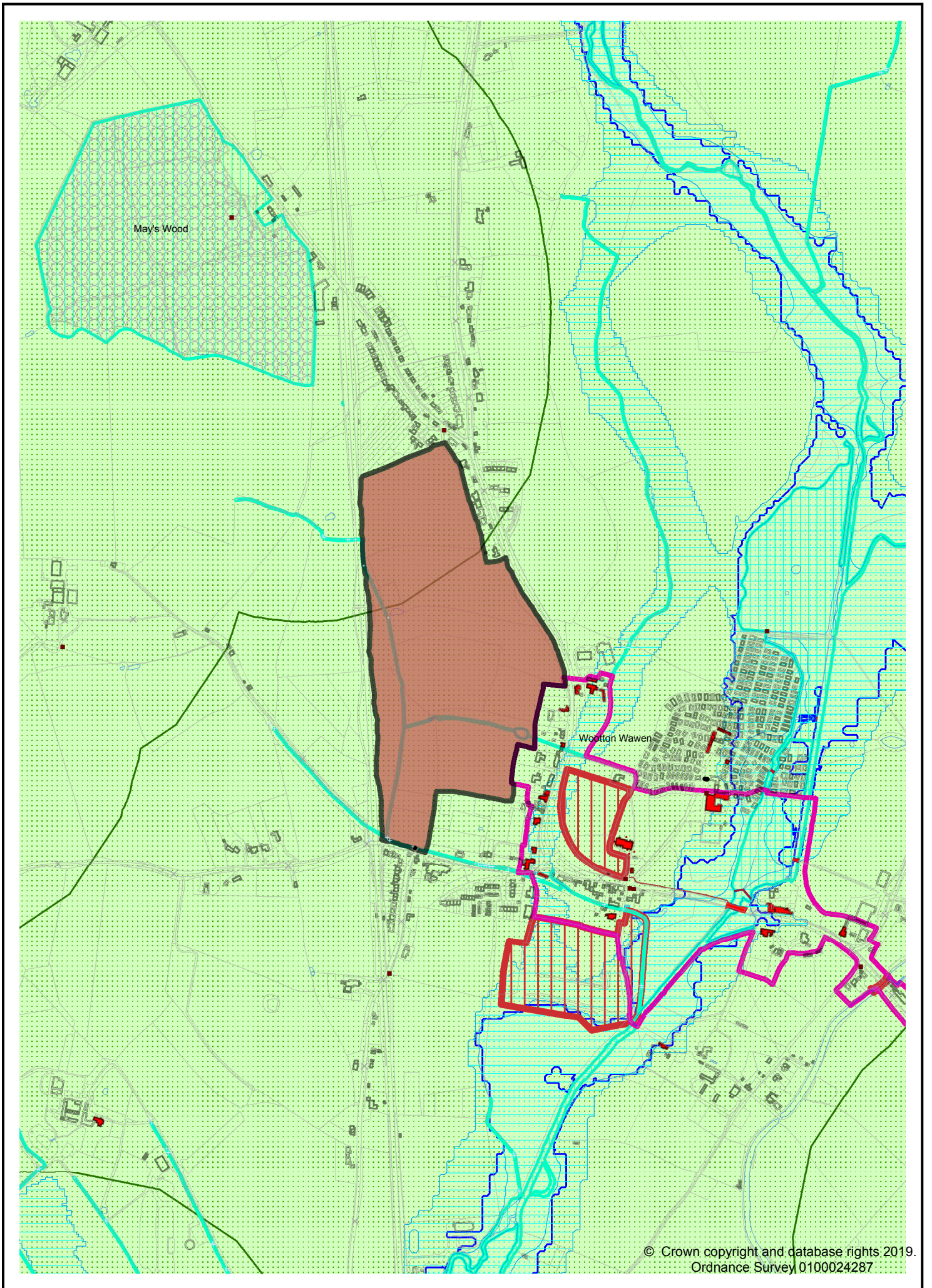
Site LSL.07 - Feldon Valley Golf Club, Sutton-under-Brailes



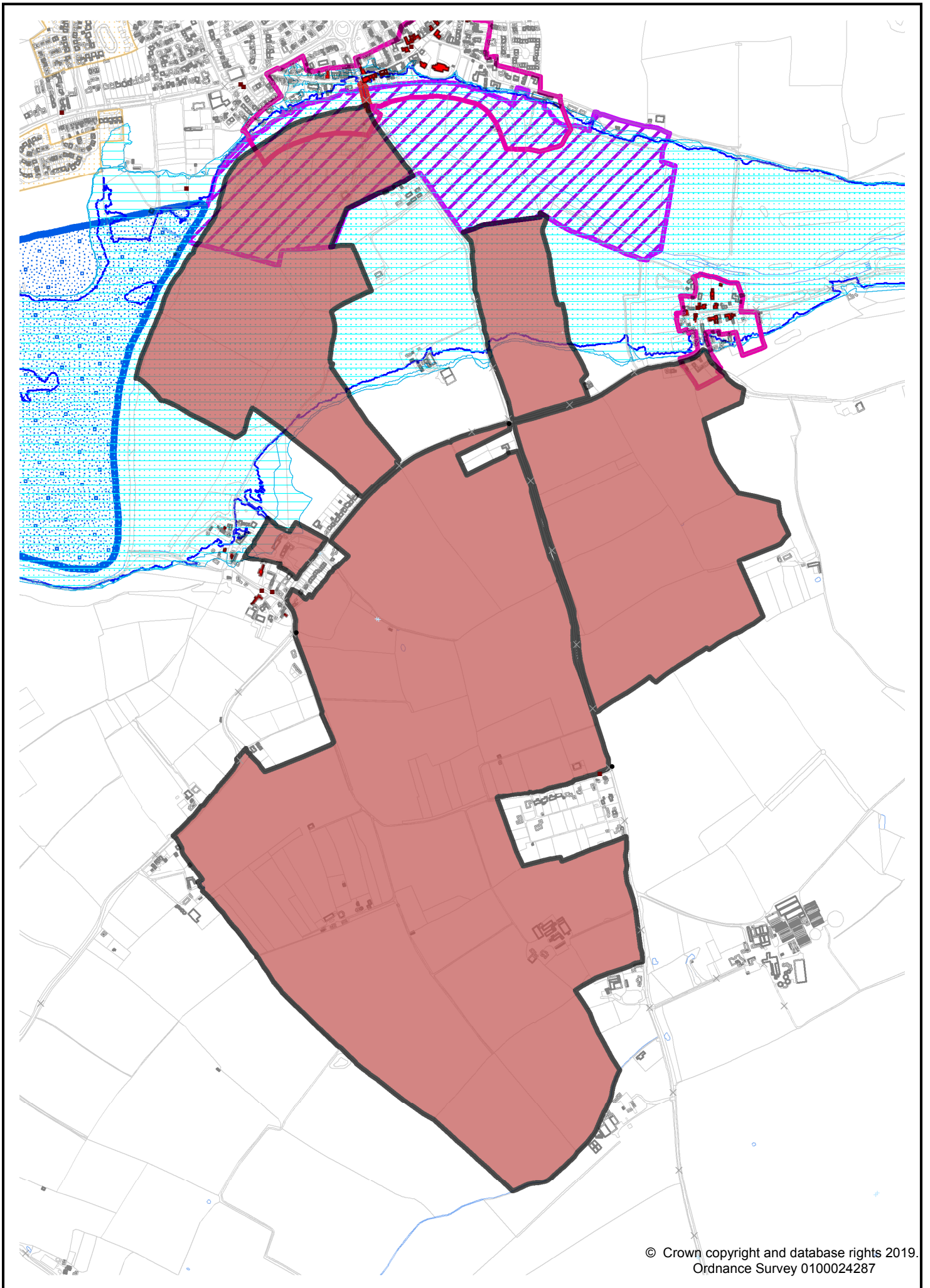
Site LSL.08 - Four Shires Farm, east of Moreton-in-Marsh



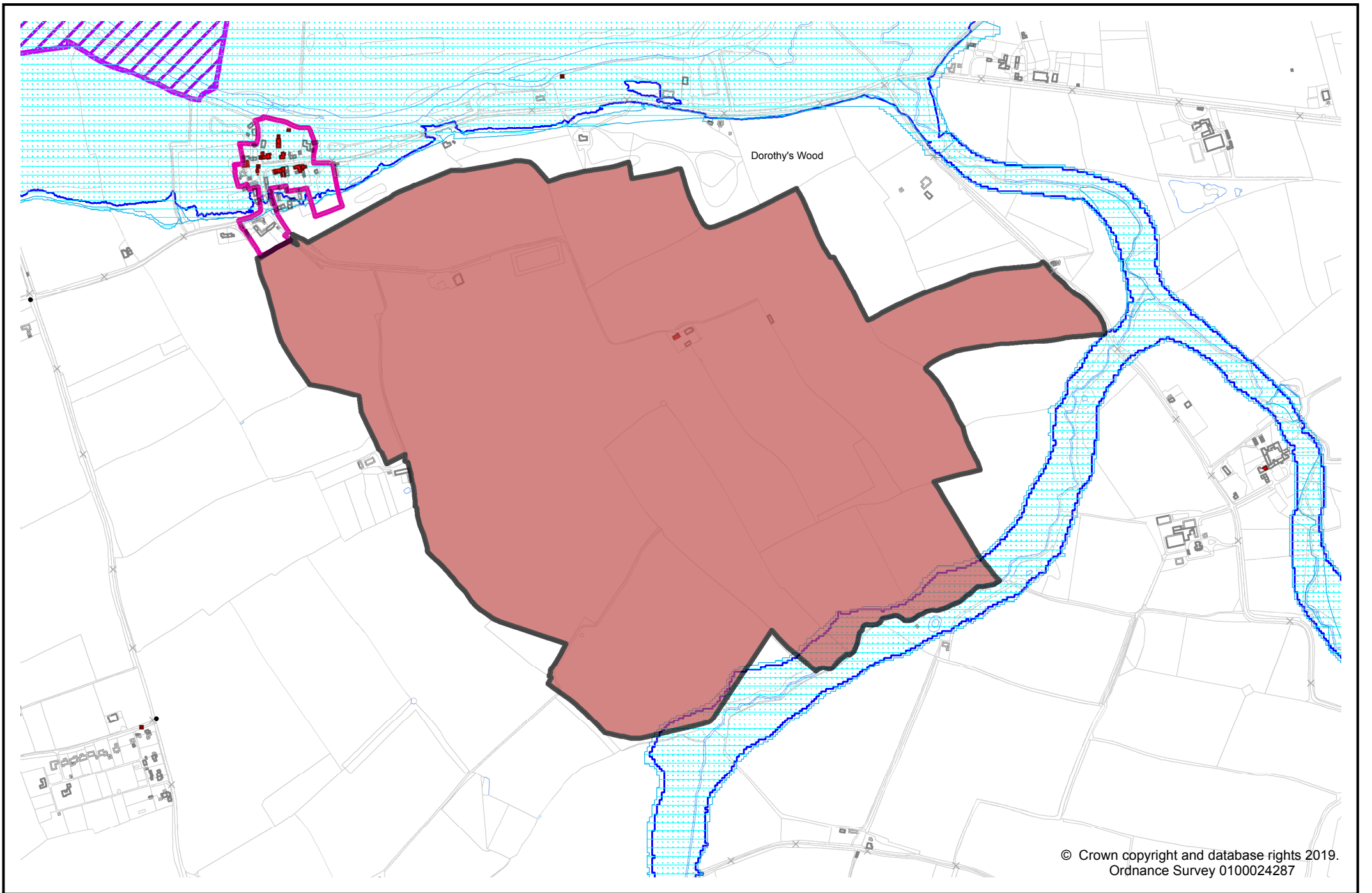
Site LSL.09 - Land west of Alcester



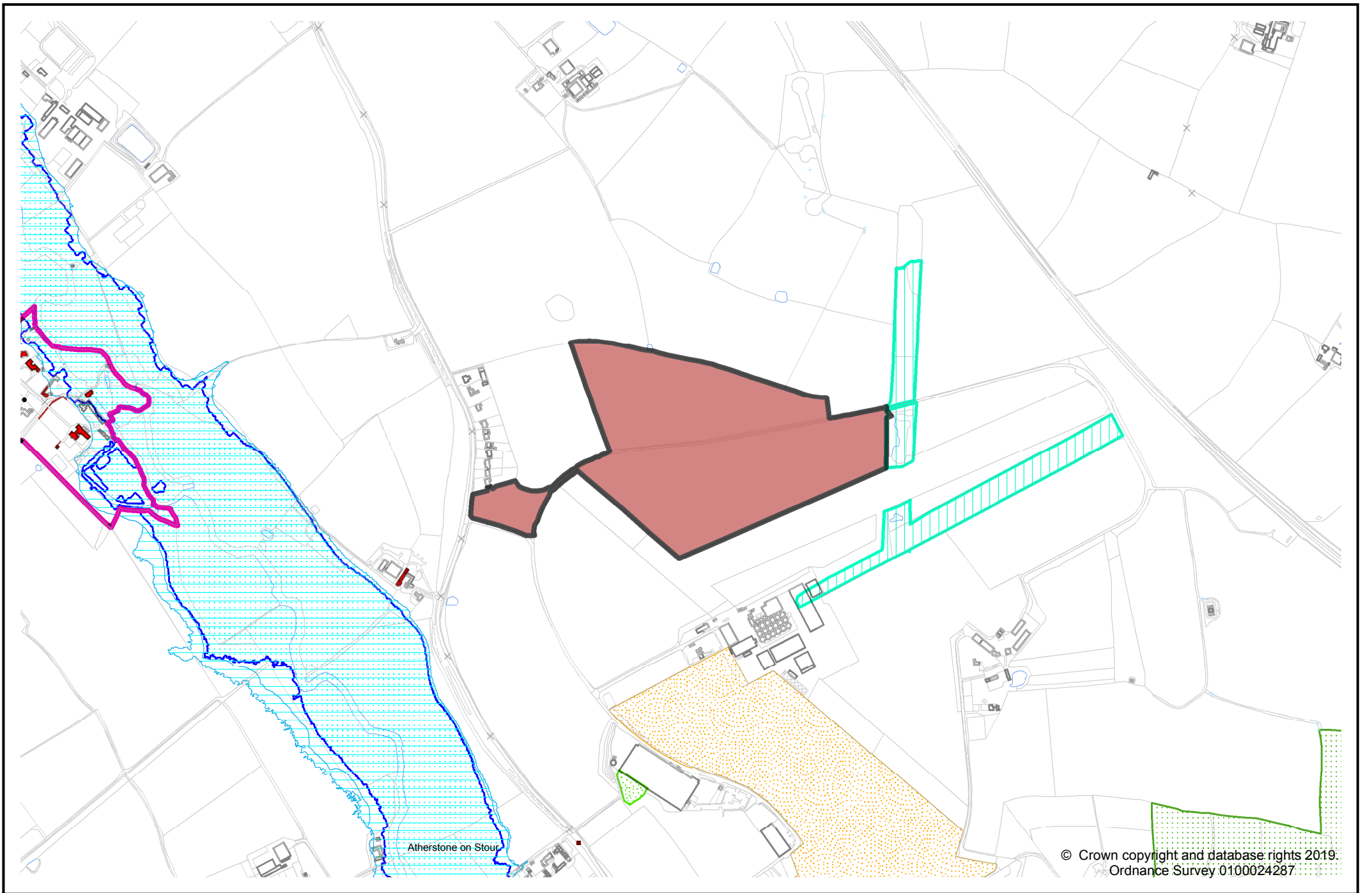
Site LSL.10 - Land north of Wootton Wawen



Site LSL.11A - Land south of Bidford-on-Avon

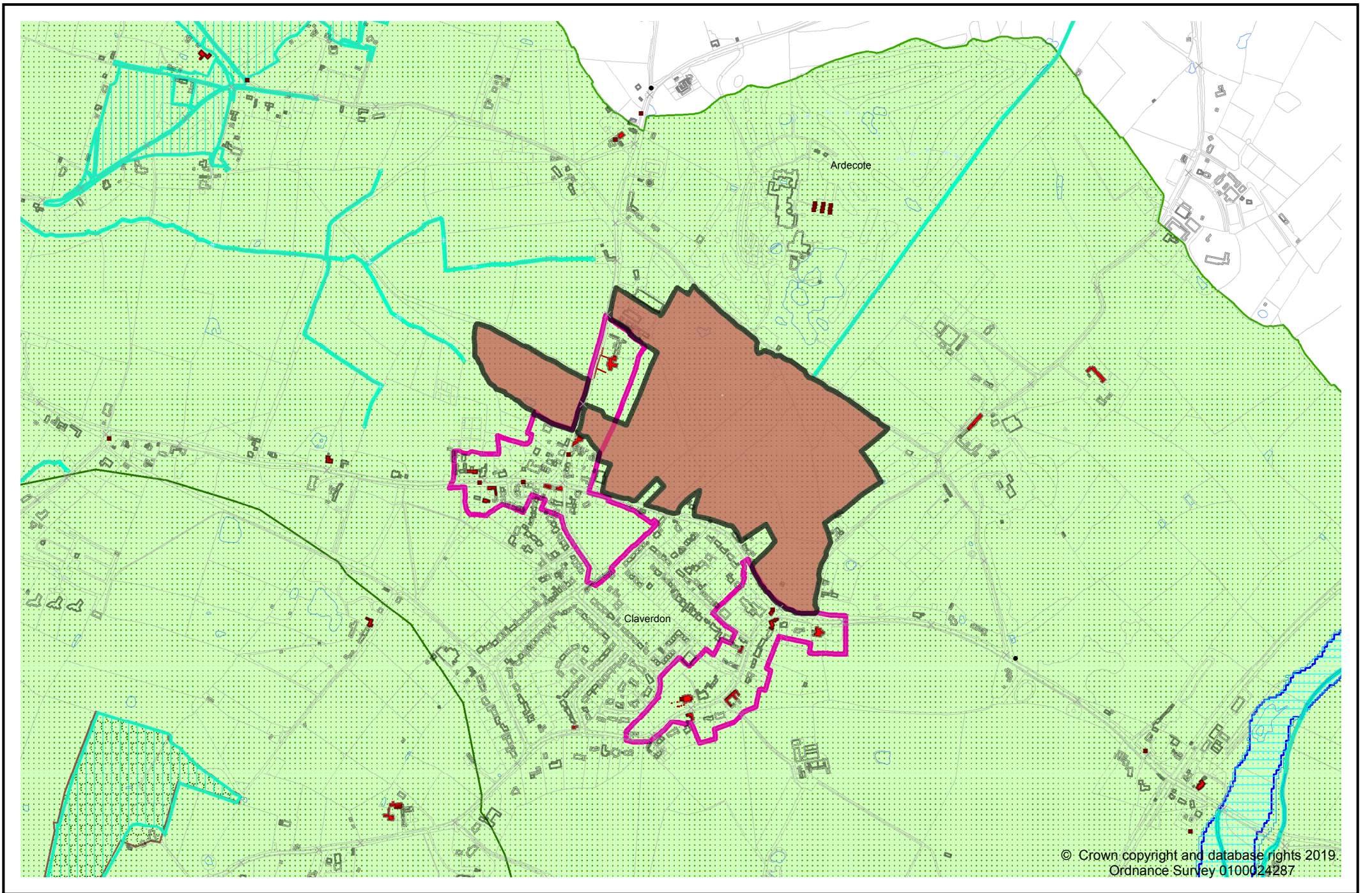


Site LSL.11B - Bickmarsh Hall Farm, South of Barton, Bidford-on-Avon

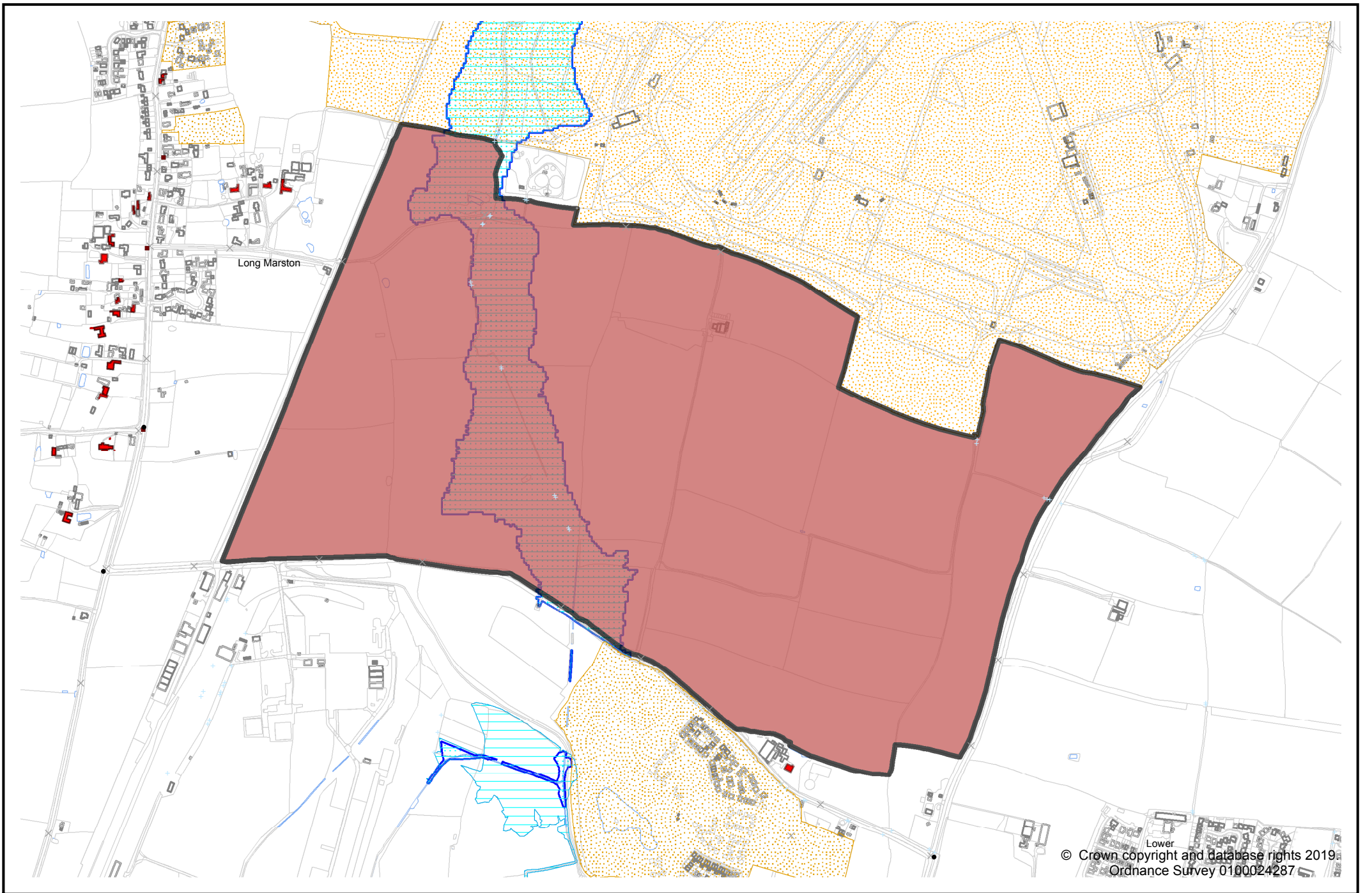


Site LSL.12 - Atherstone Airfield

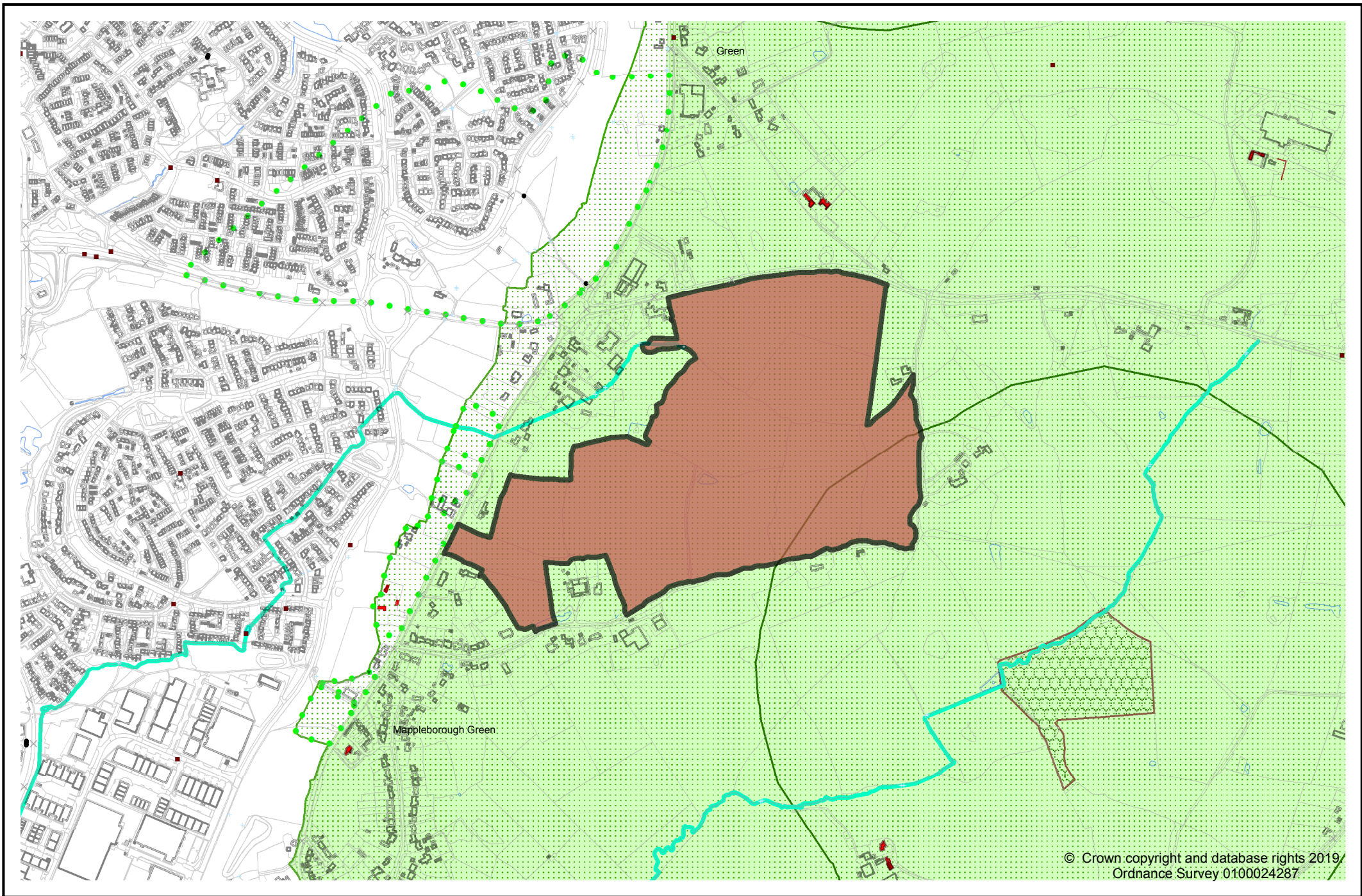
© Crown copyright and database rights 2019.
Ordnance Survey 0100024287



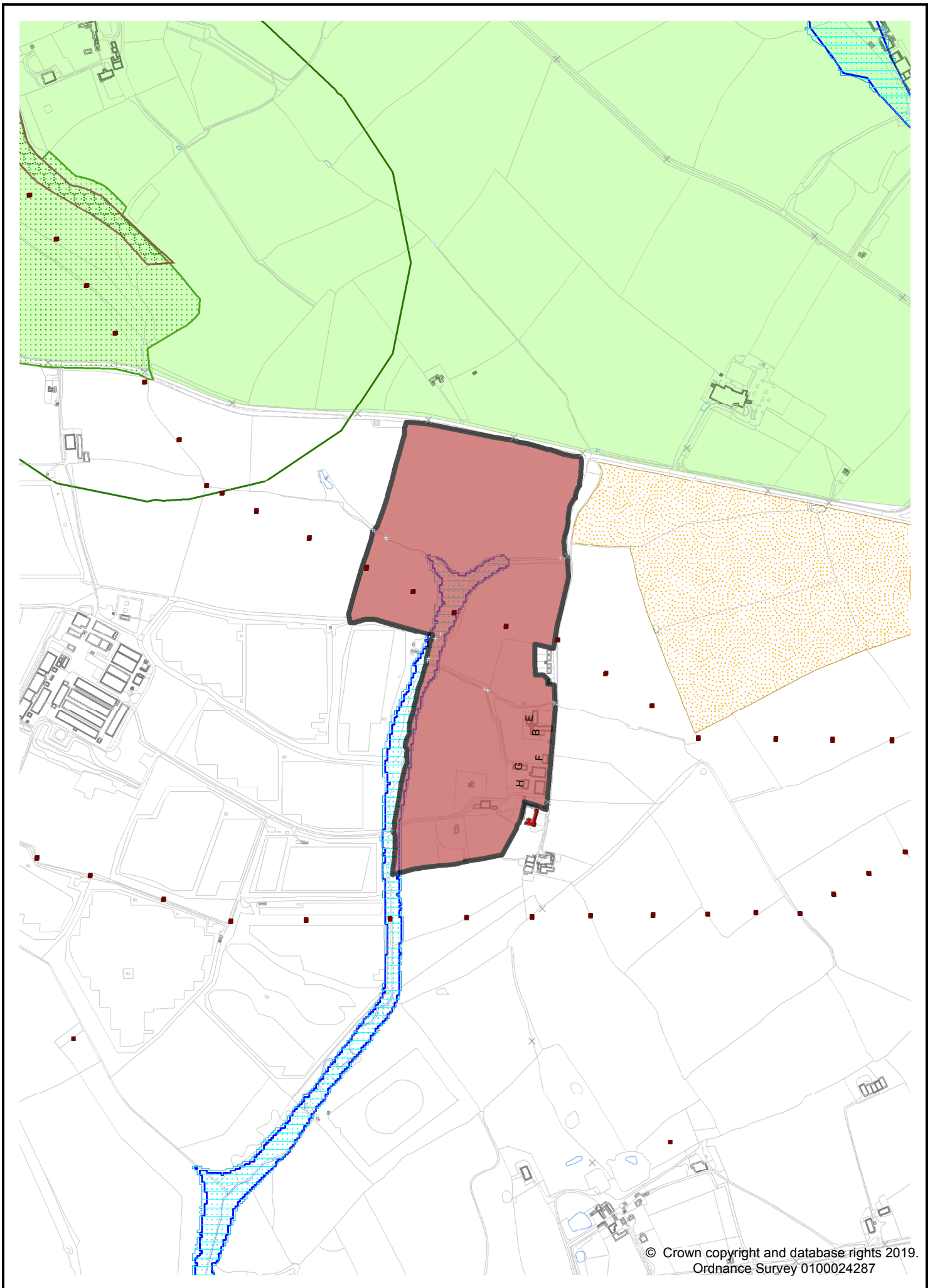
Site LSL.13 - Lye Green Road/Station Road, Claverdon



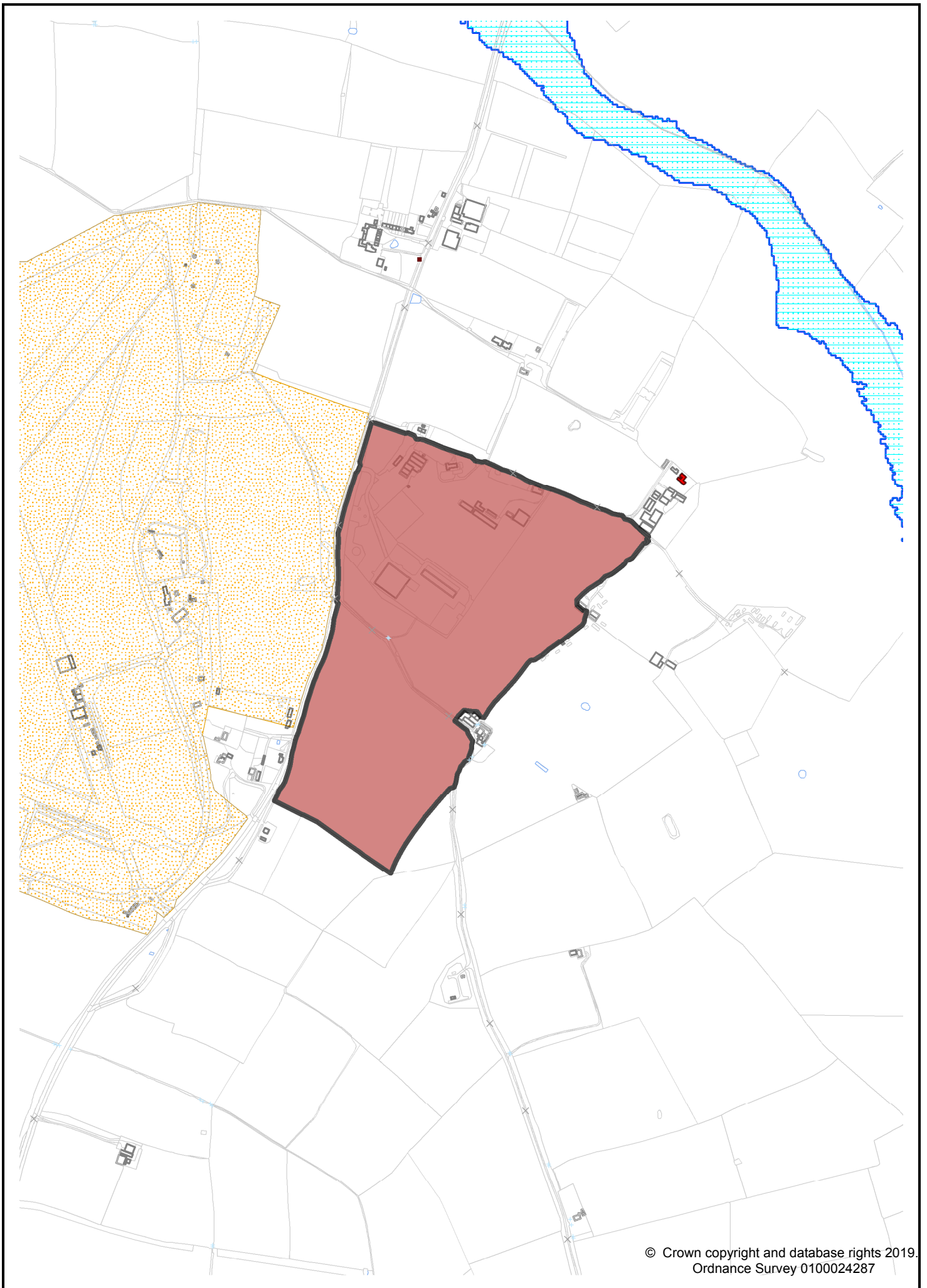
Site LSL.14 - North of Station Road, Long Marston



Site LSL.15 - South of Henley Road, Mappleborough Green

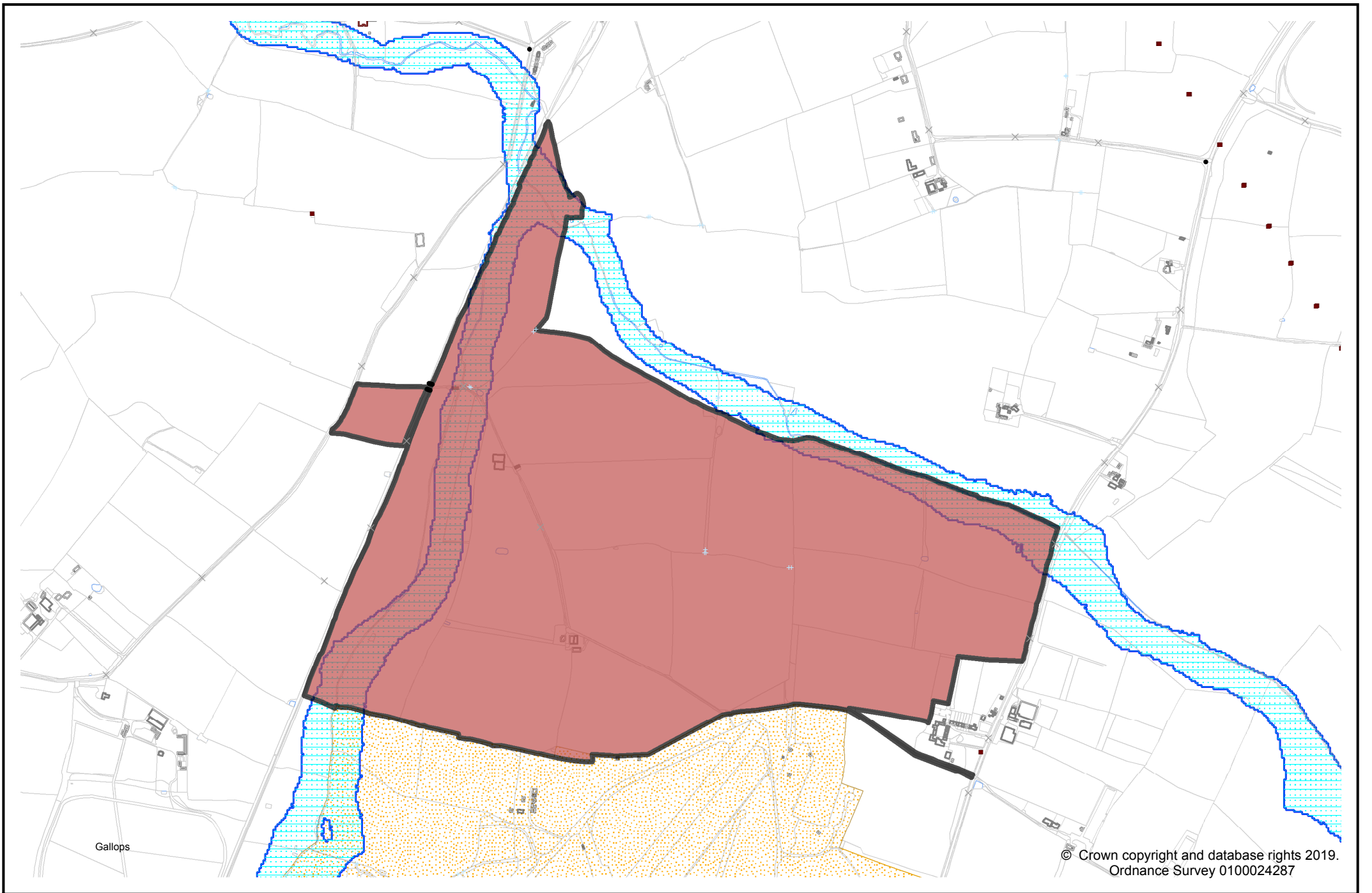


Site LSL.16 - Drayton Manor Farm, Alcester Road, Stratford-upon-Avon

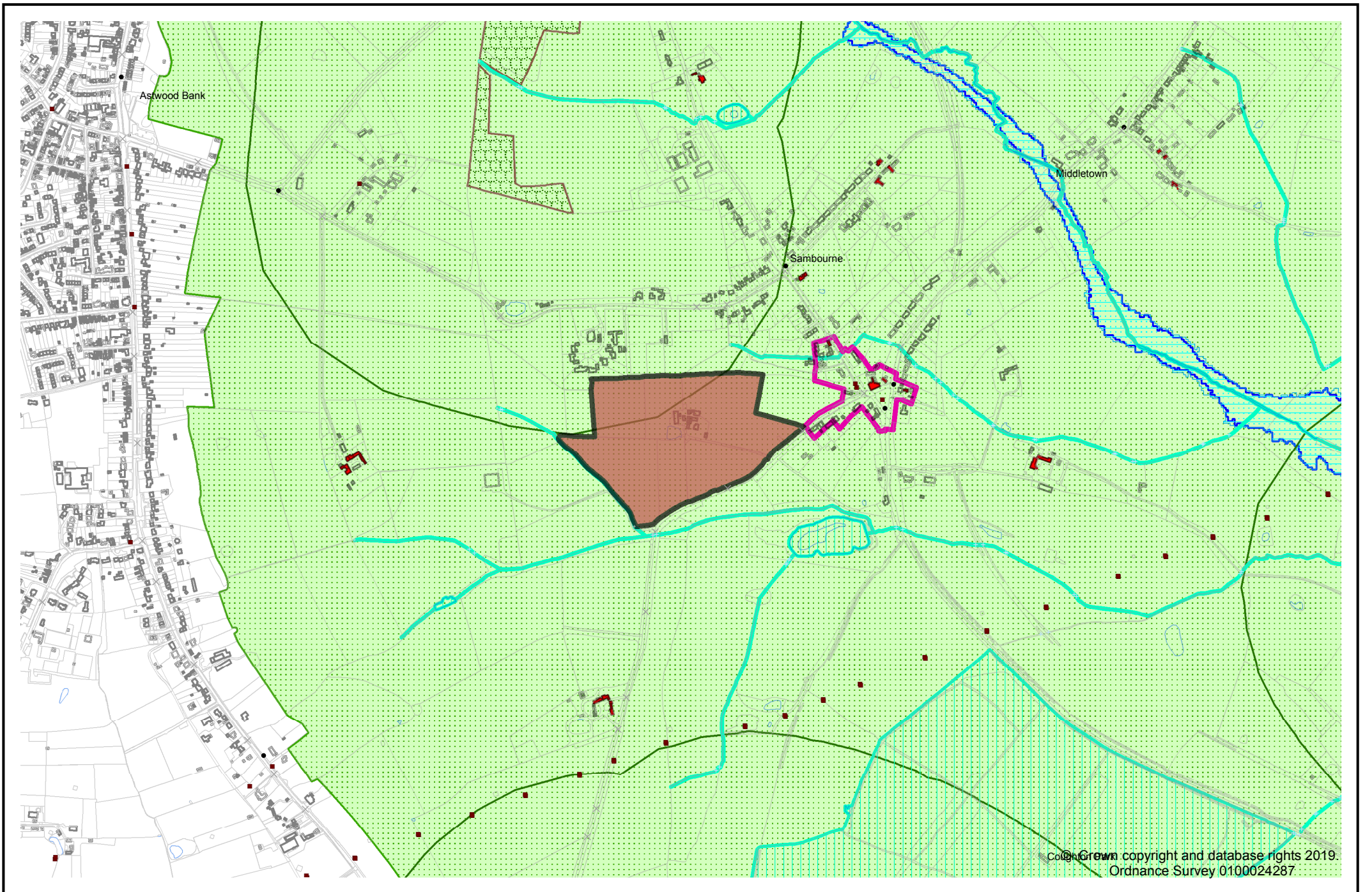


© Crown copyright and database rights 2019.
Ordnance Survey 0100024287

Site LSL.17 - Stratford Agri-Park, Clifford Chambers



Site LSL.18 - West of Campden Road, Long Marston



Site LSL.19 - Glebe Farm, Sambourne