

Alcester
Neighbourhood Development Plan
Regulation 15 Submission
Consultation Statement

April 2019



1.0 Introduction and Background

1.1 This Consultation Statement has been prepared to accompany the Regulation 15 Submission Draft of the Alcester Neighbourhood Development Plan. This Consultation Statement should be read alongside the Basic Conditions Statement.

1.2 This Consultation Statement has been prepared in accordance with The Neighbourhood Planning (General) Regulations 2012 (SI No. 637) Part 5 Paragraph 15 (2) which defines a “consultation statement” as *a document which:*

- (a) contains details of the persons and bodies who were consulted about the proposed neighbourhood development plan;*
- (b) explains how they were consulted;*
- (c) summarises the main issues and concerns raised by the persons consulted;*
and
- (d) describes how these issues and concerns have been considered and, where relevant, addressed in the proposed neighbourhood development plan.*

1.3 The Alcester Neighbourhood Development Plan has been prepared in response to the Localism Act 2011, which gives parish councils and other relevant bodies, new powers to prepare statutory Neighbourhood Plans to help guide development in their local areas. These powers give local people the opportunity to shape new development, as planning applications are determined in accordance with national planning policy and the local development plan, and neighbourhood plans form part of this Framework. Other new powers include Community Right to Build Orders whereby local communities have the ability to grant planning permission for new buildings.

1.4 In September 2013 Alcester Town Council made the decision to prepare a Neighbourhood Plan for the Parish. The area was formally designated by Stratford-on-Avon Council on 13 January 2014 and is shown in Figure 1 below.

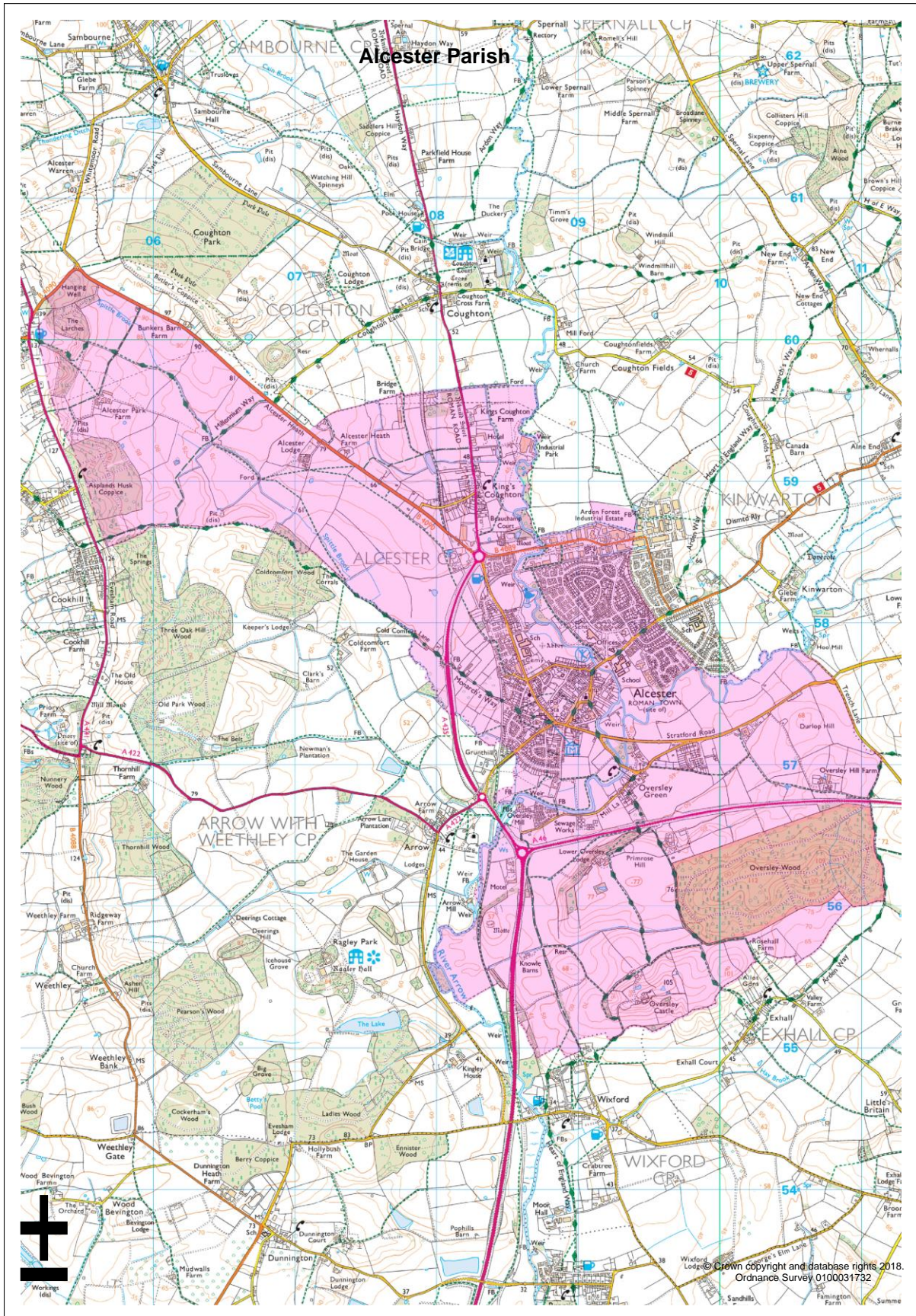


Figure 1

2.0 Consultation Aims and Techniques

- 2.1 The aims of the consultation process were:
 - 2.1.1 To 'front-load' consultation and ensure that the Alcester Neighbourhood Plan is fully informed by the views and priorities of local residents, businesses, and key local stakeholders.
 - 2.1.2 To ensure that detailed consultation takes place at all stages of the process, especially where key priorities needed to be set.
 - 2.1.3 To engage with as broad a cross-section of the community as possible, using a variety of consultation and communication techniques.
 - 2.1.4 To ensure consultation results are made publicly available and used to inform subsequent stages of the Neighbourhood Planning process.

- 2.2 The Neighbourhood Plan team used a variety of means of communication. The Town Council newsletter is published quarterly and is hand delivered to the 3000 households in the town. This provided a useful and regular update of progress.

- 2.3 The Town Council manage Facebook and Twitter accounts which were used to advertise consultations and events.

- 2.4 The Town Council set up a dedicated page on its website to cover the Neighbourhood Plan.

- 2.5 The Town Council advertised consultations and events on the Town Council notice boards.

3.0 Informal Consultation Stages and Summary of Results

- 3.1 Consultation was led by the Neighbourhood Plan Steering Group on behalf of Alcester Town Council with independent professional support from Avon Planning Services since 2017.

- 3.2 The programme of consultations undertaken throughout the preparation of the Neighbourhood Plan, is summarised below. All the original documentation is available on the website www.alcester-tc.gov.uk/neighbourhoodplan. The number in brackets (x) identifies the item on the public consultation page of the website.

- 3.2.1 December 2012 – January 2013 - Four public workshops were held to identify issues.
- 3.2.2 June 2014 - students from Alcester Grammar School undertook an initial clipboard questionnaire (1). The results of the questionnaire are shown at (2)
- 3.2.3 June 2014 - “Where are we Now” leaflet was delivered to every household (3)
- 3.2.4 September and October 2014 - 16 roadshows were held around Alcester (3). The poster advertising these is at (4) and the results at (5)

Our Alcester
Working together

Alcester Town Council are bringing the Our Alcester roadshow to an area near you soon!

Localism Working for the Alcester Community.

What do you think the town needs to keep the Alcester Community Spirit?	How do YOU want to see the town grow in the next 15 years?	How can local infrastructure and services can be improved by local people?
--	---	---

It's all about the local people so your involvement is essential!

Saturday 6 Sept 1-4pm	Moorfields Park (Fruit & Veg show)	Saturday 4 Oct 10-12am	Crooks Lane Play area (Hopkins)
Wednesday 10 Sept 7-9pm	St Faiths Road (opposite school)	Wednesday 8 Oct 7-9pm	Seggs Lane by the nursery
Saturday 13 Sept 10-12am	High Street (near the Church)	Saturday 11 Oct 10-12am	Old recreation ground
Wednesday 17 Sept 7-9pm	Newport Drive/ Orchard Drive	Wednesday 15 Oct 7-9pm	Mill Lane, Oversley Green
Saturday 20 Sept 10-12am	Oversley Green (Bridge House)	Saturday 18 Oct 10-12am	Westbury Park/ Greville Road
Wednesday 24 Sept 7-9pm	Fields Park Drive/ Fairwater Crescent	Wednesday 22 Oct 7-9pm	Alauna Avenue open green space
Saturday 27 Sept 10-12am	Eclipse Road/ Birmingham Road	Saturday 25 Oct 10-12am	Kings Coughton, Rugby Club
Wednesday 1 Oct 7-9pm	Hertford Road open green space	Wednesday 29 Oct 11am-1pm	Arden Industrial estate

For more information contact Alcester Town Council:
administration@alcester-tc.gov.uk or 01789 766084

- 3.2.5 October 2014 – business questionnaire hand delivered to all businesses (6)
- 3.2.6 November 2014 – “Where are we now” leaflet delivered to every household (7)
- 3.2.7 November 2014 – questionnaire delivered to all schools in Alcester (8)

- 3.2.8 During 2014 – focus groups were held with key interest groups
- 3.2.9 December 2014 – Facebook survey undertaken
- 3.2.8 January 2015 – Older People’s Questionnaire hand delivered (9)

- 3.3 All the above consultation results were independently analysed by Urban Vison Enterprise who produced a detailed Report for the Steering Group. This identified 12 Main Issues which had been raised by the consultation responses. The Report then went on to suggest a Vision and Strategic Aims for the Neighbourhood Plan (10)

- 3.4 Using the results of the Report above, the Household Questionnaire was drafted and consultation continued.
 - 3.4.1 March 2015 – Household Questionnaire hand delivered to all households (11). Results are at (12)
 - 3.4.2 June 2015 – Results of Household Questionnaire published in Summer newsletter which is delivered to every household (13)

- 3.5 The Neighbourhood Development Plan was put on hold pending adoption of the Stratford on Avon Core Strategy. This was finally adopted in July 2016.

- 3.6 January 2017 – Infrastructure parking forum was undertaken in conjunction with the Civic Society and Chamber of Trade (14).

- 3.7 Following the retirement of the Town Clerk in January 2017, a new Town Clerk was appointed in March 2017. The Steering Group was re-formed, and consultation continued as follows:
 - 3.7.1 July 2017 – Housing Needs survey distributed to every household (15)
 - 3.7.2 September 2017 – results of Housing Needs Survey published (16). The Housing Needs Survey identified a need for 71 homes for households with a local connection. It was agreed by the Steering Group that the identified need would be more than fulfilled by the development of 350 houses already granted outline planning permission at Allimore Lane - 11/02767/OUT and 11/02895/OUT. The exception to this was provision for bungalows which were not anticipated in either application.
 - 3.7.3 September 2017 – Emerging Policies document delivered to every household (17). The results of this survey are shown at (18) and (19). Sixty-six papers were returned. Of those who responded 82% either agreed or strongly agreed with the Neighbourhood Plan Vision for Alcester. 80% either agreed or strongly agreed with suggested policies in

this document relating to themes on Housing, Design and Heritage, Economy, Transport, Town Centre, Community Facilities, Leisure and Recreation and the Environment. 79% either agreed or strongly agreed with the Objectives outlined in the suggested policies.

- 3.8 During 2018, the Steering Group produced a document identifying the Key Issues from the consultation responses to show how these issues informed the setting of the Objectives and associated Policies and Projects in the Pre-Submission Consultation Version of the Neighbourhood Plan. This matrix is at (20)

4 Regulation 14 Consultation

- 4.1 The public consultation on the Alcester Draft Neighbourhood Plan was carried out in accordance with The Neighbourhood Planning (General) Regulations 2012 (SI No. 637) Part 5 Pre-submission consultation and publicity, paragraph 14. This states that:

Before submitting a plan proposal to the local planning authority, a qualifying body must

- *publicise, in a manner that is likely to bring it to the attention of people who live, work or carry on business in the neighbourhood area*
 1. *details of the proposals for a neighbourhood development plan;*
 2. *details of where and when the proposals for a neighbourhood development plan may be inspected;*
 3. *details of how to make representations; and*
 4. *the date by which those representations must be received, being not less than 6 weeks from the date on which the draft proposal is first publicised;*
- *consult any consultation body referred to in paragraph 1 of Schedule 1 whose interests the qualifying body considers may be affected by the proposals for a neighbourhood development plan; and*
- *send a copy of the proposals for a neighbourhood development plan to the local planning authority.*

- 4.2 The draft Alcester Neighbourhood Plan was published for 6 weeks formal public consultation from 29th September 2018 – 16th November 2018. The draft Plan was available for viewing and downloading from the Parish Council website www.alcester-tc.gov.uk.

- 4.3 Hard copies of the draft Plan were available for viewing at the Town Council Offices which are open from 9 am to 1 pm every weekday. Hard copies were also available

to view at Alcester Library.

- 4.4 The draft NDP was forwarded by email to 137 Statutory Consultees as listed on the “Collated Responses to Regulation 14 Consultation” document at (21)
- 4.5 A 12-page summary of the draft NDP was hand delivered to 3000 households and all parish businesses (22)
- 4.6 A public notice was placed in the Stratford Herald newspaper (23) and on the Town Council noticeboards
- 4.7 Respondents were invited to complete the questionnaire and to submit completed forms / other comments by email or by post to the Town Clerk or left in one of the collection boxes located at strategic points around the town.
- 4.8 Public drop in sessions were held on Saturday 30th September 2018 between 10 am and 1 pm at Alcester War Memorial Town Hall and from 2 pm to 4 pm at the Jubilee Centre. These were advertised on display boards on “The Globe” traffic island and at the exit of the Waitrose supermarket. 50 people attended over both sessions and 9 questionnaires were completed.



- 4.9 Stratford on Avon District Council was advised of the publication and submitted detailed comments. Their comments are included in the “Collated Responses to Regulation 14 Consultation” document at (21)

- 4.10 15 representations were received from statutory bodies and professional representatives of landowners and 81 completed questionnaires were received from residents.
- 4.11 The questionnaires completed by residents asked whether respondents agreed or disagreed with each policy. In respect of policies relating to Housing and the Built Environment, an average of 94.5% agreed with the policies; as regards Economy – 98.3% agreed; as regards Transport and Infrastructure – 97.6% agreed; as regards Community, Leisure and Wellbeing – 97.4% agreed and as regards Natural Environment – 99.2% agreed.
- 4.12 The “Collated Responses to Regulation 14 Consultation” document at item (21) sets out all the detailed responses submitted to the Draft Neighbourhood Plan, together with information about how these responses have been considered by the Steering Group and have informed the amendments to the Submission Neighbourhood Plan.

5.0 Strategic Environmental Assessment/Habitat Regulations Assessment

- 5.1 Neighbourhood Plans are covered by the Strategic Environmental Assessment Regulations and the Habitat Regulations Assessment process. Stratford on Avon District Council prepared an SEA Screening Report to determine whether the Alcester Neighbourhood Development Plan should be subject to a Strategic Environmental Assessment (SEA), in accordance with the European Directive 2001/42/EC and associated Environmental Assessment of Plans and Programmes Regulations 2004 and/or a Habitats Regulations Assessment (HRA) in accordance with Article 6(3) of the EU habitats Directive and with Regulation 61 of the Conservation of Habitats and Species Regulations 2010 (as amended).
- 5.2 The Screening Report concluded that neither SEA nor HRA was required. It was subsequently sent to the relevant statutory bodies: Natural England, Historic England and the Environment Agency to clarify whether they agreed with Stratford on Avon District Council’s findings as to whether the plan requires a full SEA and/or HRA assessment. These bodies agreed with the conclusions of the Screening Report. Copies of their responses are included in the Supporting Documents section of the website