

Stratford *view*

Winter 2016

Your Local Councillor

Spotlight on Long Compton
and Little Compton

Updated refuse & recycling
collection calendar



Are you in to Win?

Did you know you could
win monthly prizes
just for recycling your
food waste?

Sign up at:
www.feedyourcaddy.co.uk

...to claim your
free welcome pack.

In partnership with:



www.warwickshire.gov.uk/foodwaste



@Recycle4Warks



RecycleForWarwickshire



Warwickshire
County Council





The editorial content of Stratford View is produced by Corporate Communications at Stratford-on-Avon District Council.

Contact us:
Stratford-on-Avon District Council
Elizabeth House
Church Street
Stratford-upon-Avon
Warwickshire, CV37 6HX

Tel: 01789 267575
Minicom: 01789 260747
Fax: 01789 260007
Email: info@stratford-dc.gov.uk
www.stratford.gov.uk

 Like us on Facebook:
[facebook.com/StratfordDC](https://www.facebook.com/StratfordDC)

 Follow us on Twitter:
[@StratfordDC](https://twitter.com/StratfordDC)

Here to help

If you find the text in this magazine difficult to read we can supply it in a format better suited to your needs. We try to write everything in plain English and want to make sure that everyone has access to the information they need.

Tel: 01789 260105
Email:
corporate.communications@stratford-dc.gov.uk

Stratford-on-Avon District Council does not accept responsibility for or endorse any products or services offered by advertisers. All information correct at time of printing.



When you have finished with this magazine please recycle it.

Printed on environmentally friendly paper from renewable sources.

If you run a business and you would like to advertise in the next issue of Stratford View please contact Community Information Services on 01253 885777 for rates and details.

Stratford View is designed and printed by Community Information Services
Email: view@cispress.com
www.cispress.com

Stratford View is distributed by The National Leaflet Company
Tel: 0191 415 3200

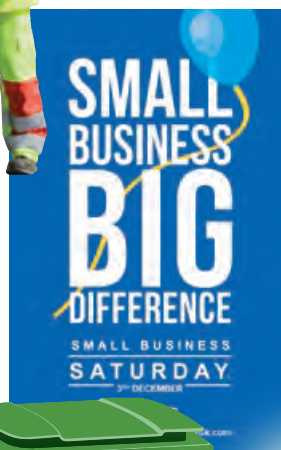


4

View



10

POWER CUT?
CALL 105

5

FLOODS
DESTROY
BE PREPARED

14



16



19



21



28

scan
SENIOR CITIZENS
ACTION NETWORK

21

Welcome to the Winter issue of Stratford-on-Avon District Council's magazine Stratford View. This magazine is produced twice a year to keep you informed about Your District Council services. You'll be pleased to hear that the cost of producing the magazine has been covered by advertising income and only a small amount of money has been spent on distribution. We are keen to receive ideas for content in future issues and receive feedback on the magazine, contact us at corporate.communications@stratford-dc.gov.uk.

Changes to refuse and recycling collections over the festive period

There will only be one change this year – properties due for a collection on Monday 26 December will be collected on Tuesday 27 December. All other collections will remain the same. In the event of heavy snow/ice during the winter, services may be changed or temporarily suspended.

For more information, please visit: www.stratford.gov.uk/winter or follow the District Council's Twitter account @StratfordDC for all the latest updates. Please turn to page 25 for your refuse and recycling calendar up to the end of March 2017 and Christmas recycling tips.



Spot it - Report it - Sorted!
www.tellmycouncil.co.uk/stratford



Your views count

In the summer Your District Council undertook its two-yearly Customer Satisfaction Survey known as the CSI. The survey looks at a range of our services to see what is important to you and how satisfied you are with them.

5,000 residents were selected at random off the edited electoral role. 807 questionnaires were returned and thank you very much to those who took part.

- The overall satisfaction score for all Council services is 79.1%, an increase of 1.5 percentage points on 2012. This is the highest score since the survey began in 2002.
- The highest rated score for a service is 86.6% - Refuse and Recycling.

In 2016, all services have seen an increase in their overall score, notably Leisure Centres (+2.9%), Street Cleaning (+2.5%) and Refuse/Recycling (+2.4%).

- You particularly like the collection of food waste in green bins, the opening times of the District Council offices and the ease of moving wheelie bins around.
- You are not so keen on the way we keep our promises and commitments in planning and the cost of car parking.

The detailed results can be seen on our website on the Consultation pages.



Support local business

Your District Council is supporting Small Business Saturday UK a national campaign to celebrate and encourage people to shop at independent local shops.

Taking place on Saturday 3 December, one of the busiest shopping days of the year, the aim of the campaign is to encourage people to 'shop local' and support small businesses in their communities.

New number to report power cuts

You can now dial 105 to report a problem.

When the power goes out, it can leave people feeling unsure about what to do. Many people don't know who to contact during a power cut, with many wrongly thinking they should call the electricity supplier they pay their bills to.

To solve this problem there's a new number to dial 105 which will connect callers to their local electricity network operator. Anyone can call 105, it doesn't matter who you choose to buy your electricity from.

You can also call 105 if you spot damage to electricity power lines and substations.

Visit powercut.105.com to find out more about 105 and electricity network operators.



FREE Christmas parking

Remember there is FREE parking in all District Council owned car parks (excluding the two Bridgeway car parks) from 4pm to midnight on the Thursday Christmas shopping nights in Stratford-upon-Avon, starting on Thursday 24 November for the Christmas Lights switch on.

**POWER CUT?
CALL 105**



Trinity Court Surgery

We Welcome New Patients. We are located in a large clean modern facility in a good central location. We have 10 GPs, a large nursing team and full administration support. We offer free parking on site and full disabled access.

Services Offered

- Late Night and Weekend Appointments
- Minor Surgery & Cryotherapy
- Family Planning
- Asthma and COPD monitoring
- Lung Function testing
- Diabetes
- Travel Health (inc Yellow Fever)
- Phlebotomy
- Well Person Health Check (40-74)
- Weight Loss Clinic
- Smoking Cessation
- Midwifery Service
- Patient Participation Group (get involved)



Stratford Healthcare,
Arden Street,
Stratford Upon Avon, CV37 6HJ
01789 292895
www.trinitycourtsurgery.nhs.uk

To register with us all you need is a medical card or a signed registration application form which can be obtained from the practice or can be downloaded from the website www.trinitycourtsurgery.nhs.uk

Avon Pharmacy



Welcome to your local pharmacy which dispenses both NHS and private prescriptions. Our aim is for you to get maximum benefit from your medicines.

Services Offered

- Repeat prescription collection and delivery service.
- Confidential help and advice
- Emergency supplies
- Review of your medications
- Medicines assessment and compliance.
- Support for people with disabilities.
- Emergency contraception
- Stop Smoking support and advice
- Needle and syringe exchange
- Managed repeat prescriptions
- Electronic prescriptions
- Flu vaccination



Stratford Healthcare,
Arden Street,
Stratford Upon Avon CV37 6HJ
Telephone 01789 200920
Fax 01789 200922
Email info@avonpharm.co.uk

Opening Hours

Monday	07:00am - 23:00pm
Tuesday	07:00am - 23:00pm
Wednesday	07:00am - 23:00pm
Thursday	07:00am - 23:00pm
Friday	07:00am - 23:00pm
Saturday	09:00am - 19:00pm
Sunday	08:00am - 18:00pm

Stratford Bus Services from Johnsons

There are so many great destinations to visit in our immediate area and you can get there on a Johnsons Excelbus!

Enjoy a relaxing afternoon tea or ice-cream in Henley-in-Arden; pack up a picnic and head to the Bancroft Gardens in Stratford-upon-Avon; delve into 1940s wartime at Upton House near Banbury; grab a delicious lunch in one of the many tea rooms in Moreton-in-Marsh; or discover the heart of Birmingham at the Bullring in Birmingham.

For bus timetables, fares and information on our bus network please contact us or visit our website www.johnsonskoaches.co.uk.

We look forward to welcoming you onboard!



JOHNSONS
@excelbus

Birmingham X20



Stratford Bus Connections Map from October 2016.

Please contact us for your free timetables or visit our website to view them online.

For bus enquiries please call **01554 797070**

or email businfo@johnsonskoaches.co.uk

For traffic and service updates please follow us on Facebook @johnsonsexcelbus and Twitter @johnsonstraffic

inspired
Interior Collections
for every space

save an extra 10%*

with presentation of this advert
VALID ONLY from 14th November 2016 until 18th December 2016
*t & c's apply details available upon request



CARPETWISE
CURTAINWISE · FURNITUREWISE

stratford upon avon

carpet-curtainwise.co.uk



Silentnight

01789 299446



**Industrial, Commercial
and Domestic
Electrical Installations, Maintenance and Repairs**

- Established over 25 years
- Local, Reliable and Professional
- All types of electrical works undertaken
- Inspection and Testing
- Fire/Intruder Alarms
- Access Control/Gates & CCTV
- Electric vehicle charging points

Tel: 01527 857718 • 0808 202 1066 FREEPHONE
98 Station Rd, Studley, Warwickshire B80 7JS
Email: admin@gsaelec.co.uk www.gsaelec.co.uk

Est 1987

Tel: 01789 296610
Rear of 48 Henley Street,
Stratford-upon-Avon CV37 6QW

- Foot Health Care
- Electrolysis
- Semi Permanent Make-up
- Facials
- Also Massage, Slimming, Reflexology, Aromatherapy
- Guinot, Mary Cohr, Phytomer
- Australian Body Care

accredited voluntary register

Open 5 days a week, closed Weds

Christmas at The Arden Hotel

DECEMBER DINING

Get into the Christmas spirit early with a three course set festive menu at The Waterside Brasserie.

From £26.50 per person (pre-booking essential)

CHRISTMAS PARTIES

The chic Waterside Brasserie, complete with Champagne bar, is the perfect setting for your Christmas party, to include artisan breads, a three course menu, coffee and crackers.

From £26.50 per person (pre-booking essential)

PRIVATE DINING

The Brooke Suite offers a cosy, private atmosphere for a relaxed pre-Christmas celebration without the shopping, cooking or washing up! Bespoke packages and room hire charges available on request.

Proud to be part of the Eden Hotel Collection

Stratford-upon-Avon, Warwickshire, CV37 6BA
T: 01789 298682
E: info@theardenhotelstratford.com
www.theardenhotelstratford.com

/thearden @ardenhotel

THE ARDEN HOTEL

The Best Gift you EVER bought

**As seen on TV's
Posh Pawn**

3 different aircraft to choose from.

Fly a REAL jet simulator at Coventry Airport.

Flight Simulators Midlands

www.flyfsm.co.uk Tel: 08454 747 737

Ideal Christmas Gift

tripadvisor

2015 & 16 winners of Trip Advisor Certificate of Excellence

£25 discount
voucher using code
"SVIEW"



ROTHER HOUSE MEDICAL CENTRE

PATIENT CENTRED CARE THROUGHOUT YOUR LIFE

OUR AIM IS TO PROVIDE THE HIGHEST STANDARD OF CARE WITHIN AVAILABLE RESOURCES IN A HAPPY WORKING ENVIRONMENT. WE WANT TO LOOK AFTER YOU AND TO SUPPORT YOU TO LOOK AFTER YOURSELF.

- We provide all core NHS services as well as specialist services including; ophthalmology, gastroenterology, rheumatology, respiratory, palliative care, warfarin commencement and monitoring.
- Rother House is actively involved in research.
- Appointments, access to medical records, text reminders and ordering of prescriptions are available online and via mobile apps.



MAIN SURGERY

Alcester Road,
Stratford-upon-Avon,
Warwickshire, CV37 6PP

BRANCH SURGERY

Rosebird Centre Pharmacy, Rosebird Centre,
Shipston Road, Stratford-upon-Avon,
Warwickshire, CV37 8LU

PHONE: 01789 269 386 | FAX: 01789 298 742

EMAIL: enquiries@rothermc.nhs.uk | WEB: www.rotherhouse.org.uk

Venture

HOUSE STRATFORD-UPON-AVON



The Business Centre that **inspires**...

- ✓ Flexible Desk, Office & Meeting Space
- ✓ Easy in, easy out terms
- ✓ Free on-site parking
- ✓ Free WiFi
- ✓ Free business support & advice
- ✓ Friendly business community
- ✓ Great networking & coffee

Venture House provides 2,500 square feet of business space over two floors offering hot-desking, co-working space, serviced offices, reception meet & greet, broadband, WiFi, business support, photocopying, on-site parking, cycle shed, indoor & outdoor chill-out zones, refreshment facilities, meeting space and small conferencing facilities.

The centre particularly welcomes home based business in rural areas who often feel isolated or distracted, to access a flexible friendly informal working environment.

Taking a hot desk space at Venture House, allows businesses to explore and share ideas with like-minded people, make new contacts and grow business.

Take advantage of our services:

- Competitive rates and flexible easy in easy out terms.
- Offices available on flexible licence or lease arrangement.
- Book the Meeting Room and get your next booking half price.
- A free hot desk trial - no need to book just pop in, you can either take up a desk space or have a look round.

For more information please visit:
www.venturehousestratford.co.uk
or call 01789 207500.

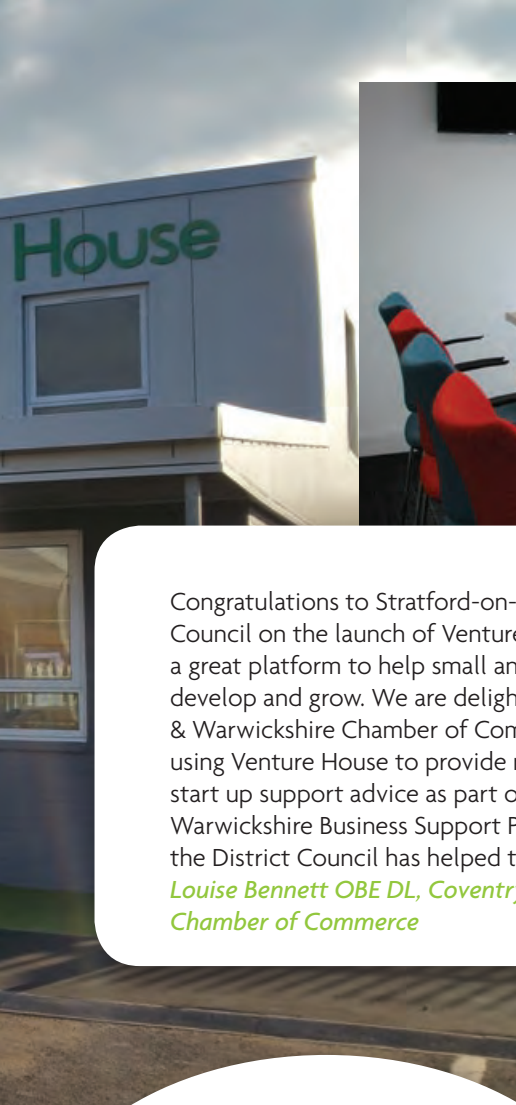
Venture House Business Centre,
Avenue Farm Industrial Estate,
Birmingham Road,
Stratford-upon-Avon,
CV37 0HR

We look forward to welcoming you to Venture House.



Coventry & Warwickshire
Local Enterprise Partnership





Congratulations to Stratford-on-Avon District Council on the launch of Venture House which is a great platform to help small and new business develop and grow. We are delighted that Coventry & Warwickshire Chamber of Commerce will be using Venture House to provide new business start up support advice as part of the Coventry & Warwickshire Business Support Programme which the District Council has helped to enable.

Louise Bennett OBE DL, Coventry & Warwickshire Chamber of Commerce

All you need to get work done in a distraction free environment. Helpful friendly staff. Comfortable but not extravagant. Good use of public money. I am used to working at home - lots of Skype and teleconferencing - but it is also good to get out! I like the break out areas if you want to chat or work with others.

Simon Teale, Felber Consulting

Great hotdesking work space which helps beat the isolation of homeworking and definitely increases my productivity whilst offering superb facilities and free parking. I can't recommend enough!

Jacquey Parker, Jump Consultancy

We achieved 100% pass rate with the exams we did at Venture House. I have normally good pass rates around 70% but this is the first time every one passed all exams including the level 2 Maths and English. Having a pleasant atmosphere to work in can and does make a big difference to how the students learn, so I would just like to say again thank you for all the help & support you showed to both myself and Rob but also to the students who were all made to feel welcome and comfortable.

Ruth King, Skills Training UK



Dormer House Dental Practice

- General Dental Practice
- White Fillings
- Hygienist
- Extractions
- Conservation
- Crowns / Bridges
- Teeth Whitening
- Periodontal Treatment
- Endodontic Treatment



Tel: 01527 852740

19B Station Road | Studley Warwickshire | B80 7HR



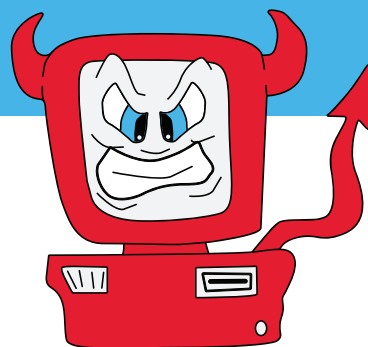
G&R COMPUTERS

01789 299901

MICROSOFT PARTNER

- VIRUS REMOVAL
- LAPTOP REPAIRS
- NETWORKING
- SALES

- HOUSE CALLS
- BUSINESS OR PERSONAL CUSTOMERS WELCOME



6 The Minories, Henley St, Stratford-Upon-Avon. CV37 6NF

www.grcomputers.com

"All I want is...

...someone who is interested"

Make a difference. Foster for Warwickshire.

Warwickshire Fostering Services

Tel: 0800 4081556 www.warwickshire.gov.uk/fostering





Quinton Gardens & Quinton House

Main Road, Lower Quinton,
Stratford-upon-Avon
Warwickshire
CV37 8RY

01789 720247



[www.facebook.com/
quintonhousenursinghome](https://www.facebook.com/quintonhousenursinghome)

WWW.QUINTONHOUSE.NET

As recommended on
www.carehome.co.uk

Step inside **Quinton House Nursing Home** and **Quinton Gardens Specialist Dementia Unit** and you'll know you've arrived somewhere incredible. Over the years we have given each resident a home from home loving, caring environment. We promote independence, choice, dignity and the highest standards of care.

From our unique person-centred approach and beautiful surroundings to the little touches that set us apart, everything we do is completely focused on you for the best quality of care for all seniors.

So spend some time getting to know us a little better by popping in to Quinton House to discover our story for yourself.

Email: info@Quintonhouse.net



TV



Ensuite rooms



WIFI Access



Home from home

If interested in the following Job opportunities please contact: Info@quintonhouse.net

Care Assistant: To attend to the physical, emotional and social needs
of residents under the direction of the Care Leader

Nurse: If you are a passionate registered nurse looking for a new opportunity to join
a forward thinking organisation which invests in quality care please apply now

Your District Council condemns Hate Crime

Your District Council has passed a notice of motion to condemn hate crimes unequivocally and reassure all people living in Stratford District that they are valued members of our community.

Nationally Hate Crime is under reported, Warwickshire Police is committed to addressing this issue by giving victims of hate crime the confidence to come forward and report their experience.

Nobody should tolerate being victimised because of who they are, hate crime is any criminal offence which is perceived by the victim or any other person to be motivated by a hostility or prejudice based on a person's:

- Race (including nationality, national origin, ethnic origin, race and colour)
- Religion
- Sexual orientation
- Disability
- Transgender
- Individual characteristic that makes someone appear different

How do I report a hate crime?

You can report a crime in confidence in any of the following ways:

- In an emergency call 999
- For non-emergencies call 101
- Report online at www.report-it.org.uk
- Call in at a police station or stop police officers in the street
- Call Victim Support on 01926 682 693. You do not need to provide your name when reporting to Victim Support.

For more information about Hate Crime in Warwickshire visit: www.warwickshire.police.uk/hate-crime



Hate crime is everyone's problem:

Don't look away, don't ignore it, don't stay silent

Help for domestic violence

Are you in a relationship and worried that your partner may have been abusive in the past?

Domestic violence and abuse is a serious issue. It's never the victim's fault. Every year, over 2,000 adults in Stratford District will suffer some form of domestic violence and abuse.

Whatever form it takes, domestic violence and abuse is rarely a one-off incident. The abuse can be physical, sexual, financial, emotional and psychological. More usually it's a pattern of abusive and controlling behaviour through which the abuser seeks power over their victim.

Domestic abuse is a crime that remains largely hidden, leaving its victims feeling trapped, powerless and isolated - afraid to

say anything in case it makes a bad situation worse. On average a victim will endure 50 assaults before seeking help. The level of abuse is likely to increase over time. Domestic abuse ruins family life and has long term, serious consequences for everyone concerned.

If you are worried your partner, or the partner of relative, may have been abusive in the past, there is now a scheme through which you can make inquiries with the police to see if they have any information that you or your children may be at risk of harm. The Domestic Violence Disclosure Scheme (DVDS) is more commonly known as Clare's Law – named after Clare Wood who was murdered by her ex-boyfriend in February 2009. Clare didn't know about his history of violence against women.

Domestic Violence Disclosure Scheme

Your right to ask

The majority of domestic homicides are committed by a partner or ex-partner.

The aim of this scheme is to give you a formal mechanism to make inquiries about your partner if you are worried that they may have been abusive in the past. If police checks show that your partner has a record of abusive behaviour the police will consider sharing this information with you. The scheme aims to help you make a more informed decision on whether to continue a relationship and provides further help and support to assist you when making that choice.

To find out more contact '101' and speak to your local police force. Alternatively you can call in at any police station or speak to a police officer on the street.

For further help, advice and safety planning please contact the following domestic violence and abuse support lines:

0800 783 1359 - Herefordshire, Shropshire and Telford
0800 980 3331 - Worcestershire
0800 408 1552 - Warwickshire



Warwickshire
POLICE



West Mercia
POLICE

www.warwickshire.police.uk
www.westmercia.police.uk

For further information on Clare's Law and making an application please go to:
www.warwickshire.police.uk/clareslaw

If you believe there is an immediate risk of harm to someone, or it is an emergency, you should always call 999.

If you would like to talk to someone about domestic violence and abuse

please call the Warwickshire Against Domestic Abuse Helpline:
0800 408 1552.

If you would like further information on domestic abuse, visit the Warwickshire Against Domestic Abuse website:
www.talk2someone.org.uk

WARWICKSHIRE AGAINST
DOMESTIC ABUSE

safe in...
warwickshire



Deep in the south of our district and in a part of the Cotswolds Area of Outstanding Natural Beauty are the villages of Long Compton and Little Compton.

Long Compton

Long Compton has many of the characteristics of a typical Cotswold village, thatched limestone cottages, medieval church and pretty hedge rowed lanes leading out to gentle green hills. It is a lovely place to live and visit and is fortunate to be positioned within easy reach of both Stratford-upon-Avon and Oxford as well as one of the well-known attractions in the Cotswolds itself, the Neolithic stone circle known as the Rollright Stones which is within walking distance from the village.

Long Compton is an ancient village which was established in early Saxon times and appears in the Domesday Book. The Lynch Gate is the most easily recognizable aspect of Long Compton with its striking half-timbered brick and thatch. This 17th century building was for most of its life the end of a row of terraced cottages. The other cottages were destroyed, but this

one survived. It functioned as a shop, and private residence, until in 1964 it was given to the church. The upper room is now used by the local historical society.

In the 19th Century the village experienced considerable prosperity with many old farm houses developed into large and attractive homes for Victorian farmers. The late 19th and early 20th century saw a change in the fortune of the village as agriculture went into decline and cities of Birmingham and Coventry offered work and a better life for villagers. A falling population and empty tumbledown cottages meant that these were hard times for the village.

Since the end of the Second World War, agriculture and the village have recovered with several successful working farms, the emergence of a number of craft based businesses and of course visitors numbers who are attracted by the village's Cotswold charm. Today the village's population has almost returned to the numbers experienced in its early Victorian heyday and includes a healthy mix of old village families and 'in-comers' all of whom share an enthusiasm for this delightful village.

Now small businesses in the village include a furniture maker, slaughterhouse, two garages, four builders, a carpenter, a glazier, the village shop, several B&B's, the Red Lion pub, a wedding dress shop, a harpsichord maker, a driving instructor and a landscape gardener.

There are 33 listed buildings within the village of Long Compton adding to the attractive appearance of the Conservation Area and it is important to protect these special buildings and their settings. In addition, there are a number of other features greatly valued by residents and visitors alike, including 7 village water pumps and the remains of a mediaeval cross which should be preserved.

Long Compton is separated from Little Compton by Oakham Hill and the ancient monument, The Rollright Stones, straddle the County boundary. The King's Men stone circle is in Little Compton and the King Stone which lends its name to King Stone Farmhouse, is in Long Compton.



Little Compton

Little Compton was once in an isolated portion of Gloucestershire until about 1845 when it was transferred to Warwickshire and became its most southernmost parish. The village has a population of approximately 250 people.

There is also the small hamlet of Kitebrook which is within the parish of Little Compton

The name "Little Compton" is derived from the old English words "coombe" – a valley on the flank of a hill and "ton" – a town or settlement. In mediaeval times it was known as "Compton in Floribus" – Compton in the Flowers. The village lays in a hollow on the edge of the Cotswold scarp with hills on three sides, varying between 400 and over 600ft, the higher land commanding fine views.

The magnificent manor house dates from 16th and 17th centuries as do many of

the older houses in the village. Both the church and the Manor formed part of the endowment of the Saxon Priory of Deerhurst; with it they were given by Edward the Confessor to the abbey of St Denis of Paris, this gift was confirmed by William the Conqueror in 1086. The Manor is now Reed Business School, an educational establishment for trainee accountants.

Over the years the village has grown and it received a major boost in the 19th century when a brewery was built along with a large Georgian style house, Washbrook House, for its owner and smaller cottages for the workers and manager known as Brewery Row and Brewery Cottage.

The building of the brewery also served to link the part of the village which had developed to the east of the manor and church, with the western end which was clustered around the original pub, now known as Pillbridge House. In the 1880's further dwellings were built unusually for the area, partly in brick, at the western extremity of the village, together with a small development known as Newtown or the southern side of the A44 trunk road.

The 20th century saw further small developments taking place, the brewery closed and its buildings were re-developed into private dwellings. The mid-Victorian vicarage and its outbuildings became redundant when a modern clergy house was built in the 1980's. In 1970 most of the village was designated as a Conservation Area and in 1990 it became part of the Cotswolds Area of Outstanding Natural Beauty. The parish contains 19 listed buildings, of which 13 are within the conservation area.

Little Compton does not have a village shop or anywhere else that you could call the centre of the village, just The Red Lion public house, the Village Hall, Bowls Club and the Church. The village school closed in 1996 and the old school house is now a 5 star bed and breakfast with animal sculptures in the front garden!

Wellesbourne older residents better off thanks to OSCARS

A volunteer group is helping to improve the lives of older people in Wellesbourne.

OSCARS - Over Sixties Community and Recreation Scheme - was the brainchild of community nurse Heidi Williams.

Believing more should be done for older people, and inspired by other activities taking place across the District, Heidi got in touch with representatives from local organisations which have contact with, or support older people in the village.

The first meeting was held in May and since then, the group have been working to identify and set up a range of social opportunities and services for the elderly population in Wellesbourne.

OSCARS is designed not only to help alleviate loneliness and isolation but also promote well-being and independent living among the elderly community.

And having spoken to elderly residents of Orbit housing schemes, volunteers discovered many of them had concerns about the distance they had to walk to get into the village.

Knowing there was a bench along the way where they could stop to catch their breath however, would encourage them to go out independently and do their own shopping.

This has health benefits as well as reducing the level of social isolation for those who are elderly.

So the volunteers set about remedying the situation and launched the Big Bench Challenge, which has so far seen two benches secured thanks to donations from VASA and Home Instead Ltd.

Other projects in the pipeline include a carers group, luncheon club, befriending scheme and respite care.

And volunteers are now calling on Wellesbourne residents to get involved by offering to take an older person to an activity group, helping with fundraising or putting posters up around the village.

Anyone who is interested in finding out more or helping the group is asked to call Heather Brown on 01789 841419.





WRAP - Looking after a loved one with dementia

Carers looking after those with Dementia are being given a helping hand by Warwickshire Reminiscence Action Project.

Better known as WRAP, the charity was initially set up 20 years ago to support and train people caring for older people in the community.

But over the years, an increasing number of people have started to look after a loved one with Dementia, and WRAP's support services have grown and adapted accordingly.

It has been estimated around 850,000 people in the UK care for a loved one with a form of Dementia, which WRAP understands can be a lonely and overwhelming role.

The charity carries out reminiscence therapy that not only stimulates the senses but also helps to unlock memories, which WRAP has found to have a positive impact on the overall health & well-being of people with dementia. And it has more than 40 themed boxes - ranging from school days to childhood games - available through its resource centre.

WRAP can support people in the completion of life reviews, which enable precious memories to be captured before they are lost forever. And the charity also organises various free activities - including two dementia friendly cafés.

Known as Café WRAP, one takes place at Bishopton Community Centre every Friday from 2pm until 4pm while the other is held at Wellesbourne Village Hall every Wednesday at the same time. The cafés are places for those living with dementia and their carers to share experiences, find support and relax over a cup of tea and biscuits in a safe and caring environment.

The cafés are managed by staff and volunteers who ensure there is a varied event programme in place - including bingo, dominoes, arts and craft activities, and guest speakers.

Café WRAP at Bishopton Community Centre celebrated its first anniversary earlier this year and the milestone was marked with the opening of a pilot day centre.

Every Friday, a WRAP trained team can look after people living with dementia at the day centre from 11am until 1pm - allowing carers some much-needed free time.

Other services provided by WRAP include a one-day reminiscence training, and a free eight-week information programme called 'Looking After A Loved One' (Laalo), as well as inter-generational projects working with schools and the community.

Mike Strophair, WRAP founder, says: "People can live positively with dementia and at WRAP we are here to support those people and their cares. We're also trying to stop prejudices of what living with dementia is like while promoting dementia-friendly environments."

Visit www.reminiscence.org.uk, like the charity's Facebook page or call 07704 147316 for further information.



Wish paperwork would go away?
Want your business to be more organised?
Need to keep tabs on who hasn't paid you yet?



Phone PIPPA on 07889 156001

STAR ACCOUNTS

Bookkeeping on Sage 50 with Smart App for you

Self Assessment • Tax Returns • VAT Returns
Bookkeeping • Accounts Preparation

aat

Sage 50



TRADITIONAL
ENGLISH
COUNTRY PUB
IN BARTON

15 Welford Road,
Barton Village,
Bidford-on-Avon,
Nr. Alcester,
Warwickshire
B50 4NP

EAT • DRINK • CAMP

Julia and the team welcome you to this lovely traditional country pub in Barton, Bidford-on-Avon, which is situated on the edge of the Heart of England Forest with wonderful walks and amazing scenery.

- Recently refurbished to a very high standard.
- Cask Marque real ales and amazing home cooked pub food.

Our Christmas menu is available throughout December for lunch and evening bookings. We are open Christmas Day - book now and enjoy your Christmas lunch at the Cottage.



01789 772279 | cofcontent@gmail.com
www.cottageofcontent.com

We provide homeware and support to Adults 18+ ensuring each individual's needs are met.



Providing homeware in the community of Stratford upon Avon, Alcester, Bidford and the surrounding areas. Please ring us for further information on how we can help care for you or a loved one.

We offer care services from 30 minutes to 24 hours, 7 days a week to include:

- ✓ Personal Care and Hygiene
 - ✓ Companionship
 - ✓ Dementia Care
 - ✓ Assisting with Medication
 - ✓ General Housekeeping and Laundry
 - ✓ Assisting with Shopping & Bill Paying
 - ✓ Meal Planning and Preparation
 - ✓ Escort/Support to Appointments
 - ✓ Overnight Support
- And much, much more

Recruiting NOW...

We look after our employees to ensure they look after our customers. We provide our Carer's with:

- Competitive rates of pay
- Mileage allowance
- Paid holidays
- Flexible working hours
- Loyalty scheme/referral scheme
- Opportunities to undertake NVQ's in health & social care
- Enhanced DBS checks

Warm & Friendly Care for Those You Care For
Tel: 01789 777519

insafehands Community Care Services Limited,
Alcester Business Centre, 4 Kinwarton Farm Road, Alcester, Warks B49 6EL
& No.5, 17 Greenhill Street, Stratford upon Avon, Warks CV37 6LF



ORIENTAL SANS RESTAURANT

Cantonese Fusion Food



- Business Lunch and Takeaway Lunch Box available
- Also a selection of Japanese and Thai Dishes
 - We support local charities
 - JAZZ & Themed Nights

**We cater for special events, birthdays
weddings business meetings**



Opening Hours:

Tuesday-Sunday:
12pm-2pm
5:30pm-11pm

"First class set meal which we really enjoyed and will be back the next time in Henley. I am contemplating driving 20 miles there for a takeaway this weekend!"



Open Bank Holiday Mondays

01564 792104

www.sansrestaurants.co.uk

71A High Street | Henley In Arden | B95 5AT





scan

SENIOR CITIZENS ACTION NETWORK

Your local SCAN Group here to help

According to data from the Office of National Statistics, almost a quarter of the UK's population will be over the age of 65 by 2037 with three times as many people living to at least 90 years of age than nowadays.

This change will bring both challenges and opportunities for central and local government – impacting on a wide range of public services. As local government funding is decreasing year on year, there is an increasing emphasis on communities being able to look after themselves and identify appropriate help independently.

Being aware of what support is available - whether it is provided through local authority or voluntary sector organisations - becomes more important as people age with engaging in social activities and feeling part of the community vital to a sense of well-being.

Your District Council supports the Senior Citizens Action Network (SCAN) groups across the District. These groups offer the chance for older people to come together socially while also providing information on local support services.

SCAN members can raise issues, which Your District Council can then try to resolve by either addressing them directly or signposting members to the most appropriate support available. Groups are also a way for older people to keep informed, maintain social connections and be part of their local community.

Although very different, the six groups around the District are all informal and offer refreshments to members.

Details of the six SCAN groups are in the table right.

Email Marie Darwen, Policy Officer, Older People on marie.darwen@stratford-dc.gov.uk or call 01789 260108 for further information.

Alcester

Alcester War Memorial
Town Hall
5 Henley Street
Alcester
B49 5QX

10:30am to 12noon:

12 January, 9 March,
11 May, 13 July,
14 September,
9 November.

Shipston-on-Stour

Townsend Hall
Sheep Street
Shipston-on-Stour
CV36 4AE

10:30am to 12noon:

10 January, 14 March,
9 May, 11 July,
12 September,
14 November.

Bidford-on-Avon

The Jolly Teapot
Church Rooms
Church Street
Bidford-on-Avon
B50 4DA

10:30am to 12noon:

26 January, 23 March,
25 May, 27 July,
28 September,
23 November.

Southam

Tithe Place
Little Park
Southam
CV47 0JZ

10:30am to 12noon:

23 February, 20 April,
15 June, 17 August,
19 October, 21 December.

Henley-in-Arden

Baptist Church Hall
High Street
Henley in Arden
B95 5BS

11:30am to 1pm:

25 January, 29 March,
31 May, 26 July,
27 September,
29 November.

Stratford-on-Avon

Methodist Church
Old Town
Stratford-upon-Avon
CV37 6BG

10:30am to 12noon:

6 February, 3 April, 5 June,
7 August, 2 October,
5 December.

Hampton House,
Longfield Road,
Leamington Spa
CV31 1XB



SKYLINE
ACCOUNTANCY SERVICES LTD

T: 01926 336161
M: 07792 185493

E: becky@skyline-accountancy.co.uk

Bancroft Gardens Residential Home

We are a small, family-run home, providing long term/short term care for the elderly with a variety of different needs. We endeavour to enable our residents to retain as much freedom as possible along with regaining or retaining their dignity.

Barnfield Care Agency
Whether you need a 30 minute visit or 24 hour care, we are more than happy to provide you with a professional and personal service every time.



For information or to discuss your requirements please do not hesitate to contact us: 01789 269196 or 01564 782099

RED HORSE VALE 
Your Friendly, Local Fuel Supplier since 1965
www.redhorsevale.co.uk

Red Horse Fuels, your trusted local supplier of all your fuel needs since 1965. Whatever your fuel requirement, we have it covered:

- Logs
- Coal
- Kerosene
- Red Diesel
- White Diesel
- Propane
- Butane
- Wood Pellets



Did you know that you can drive in and self serve Diesel for your car here at Red Horse? We also sell Red Diesel at the pump for our trade customers.

Need a new oil tank? Red Horse provide a full replacement service which includes the collection and disposal of your tank.

Your Friendly, Local, Fuel Supplier Call 01926 642832 To place your order and arrange a delivery to suit you




INSPIRING MUSIC

Whatever your level, from beginner to professional, Musicroom will always provide the inspiration to help you make the most of your musical ambition.

We have the instruments, sheet music, songbooks, accessories, passion, experience, tuition, the repairs, the finance options, the competitive prices and the friendly advice that you won't find anywhere else.



Musicroom, 38 Rother Street, Stratford-Upon-Avon
Warwickshire, CV37 6LP
01789 268 515 stratford@musicroom.com

musicroom
Everything for the Musician

Southam Country Stores

For All Your Beaks, Paws And Claws

- Stockists of all premium pet foods
- Large range of accessories
- Bulk wild bird & horse feeds
- Cage & aviary birds
- Small animals
- Aquatics & fish
- Rabbits & guinea pigs



FREE LOCAL DELIVERY

Westfield Road, Southam, CV47 0JH | 01926 815054
www.southamcountrystores.co.uk



Fully qualified and insured. Competitive prices.
 Private and corporate contracts welcomed.
 Free advice and quotations!
 Give us a call **07930 736086**

Professional Tree Care Service

Tree dismantling • Hedge Trimming • Pollarding
 Crown reduction/thinning • Stump Grinding
 Lawn Maintenance & General Gardening
 Surveys • 24 Hour Call Out
 Landscape Gardening



T: 07930 736086 | E: Woodshiretreecare@gmail.com

www.woodshiretreecare.co.uk

54 Warwick Road, Southam, Warwickshire, CV47 0HW

The Leading UK Driveway Specialist Nationwide Driveways



- Patios, Paths & Driveways
- Block Paving - 100's of Design Ideas
- Imprinted Concrete
- Dropped Pavement Kerbs

Henley-On-Thames 01564 330616

Stratford-Upon-Avon 01789 508660

Solihull 0121 607 8834

www.nationwidedriveways.net
nwdrives@gmail.com

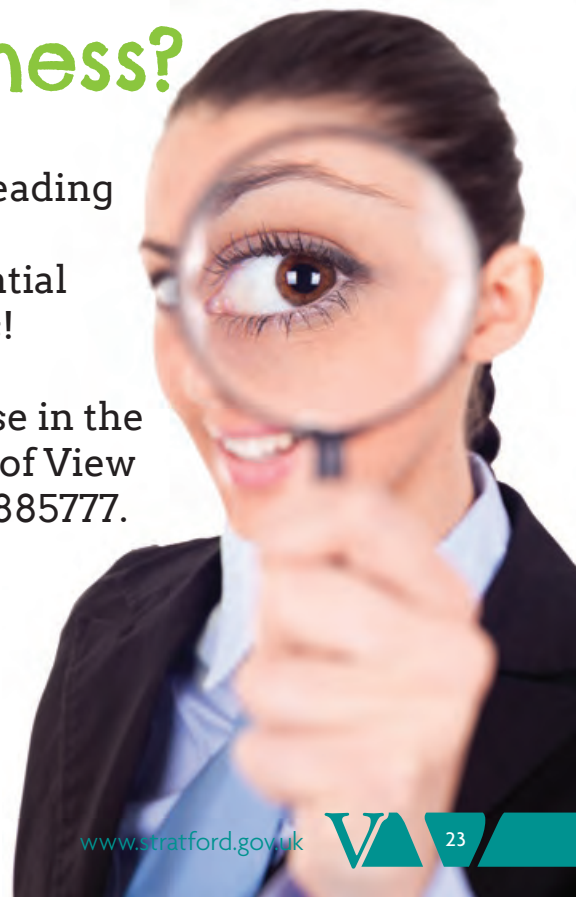


Eye catching design at a competitive price. We offer the complete publishing service from conception to final product. To view just part of our successful showcase visit: www.cispress.com t: 01253 885777

Searching for new business?

If you're reading
 this so are
 your potential
 customers!

To advertise in the
 next issue of View
 call 01253 885777.





STRATFORD
UPON AVON'S
FINEST

FISH & CHIP
RESTAURANT
& TAKEAWAY

Good Food For All The Family.

**Menu & Children's Menu Can
Be Found On Our Website.**

**Also Starters / Light Bites /
Burgers / Salads & Sides.**

**Private Function Room
Available For Hire.**

01789 297586

INFO@THEVIEWSTRATFORD.CO.UK
WWW.THEVIEWSTRATFORD.CO.UK

 **CRAWFORD & JAYNES**
ORGANIC HAIRDRESSING

Reader Offer!

Crawford & Jaynes Organic Hairdressing
is offering 20% discount on all
hairdressing services when quoting
Stratford View Winter 2016.

Our products are safer for you and
our staff by containing no ammonia,
sulphates, silicone or parabens.

Please quote Stratford View Winter 2016 when booking.

01564 794400

crawfordjaynes.co.uk

Terms & conditions apply

169 High Street | Henley-in-Arden | B95 5BA

Storage
from
**A
DAY**

**STRATFORD
SELF STORE**
.CO.UK

**Renovating?
Moving house?
Need space?
Downsizing?
Too much
paperwork?**

Secure purpose built
SELF STORE UNITS

- ✓ Range of unit sizes available
- ✓ Top security
- ✓ 24 hour access available
- ✓ NO access charges
- ✓ NO long term commitment

VAN HIRE

- ✓ Various van sizes available
- ✓ Half & full day hires
- ✓ Very competitive rates



01789 720027



**Usha Bangladeshi
& Indian Cuisine**

TAKEAWAY • ORDER ON-LINE

**10% Off Your
Total Bill**

For A Maximum of 4 People*

*T&Cs Apply - Excludes Bank Holidays
- Offer ends 28th February 2017

Opening Hours

Lunch: Thursday-Sunday: 12pm-2pm (seasonal)

Sunday-Thursday: 5.30pm-12.00am

Friday & Saturday: 5.30pm-12.30am

www.usha-stratford.co.uk

28 Meer Street, Stratford Upon Avon, CV37 6QB

Tel: 01789 297348

Give your **green** and **recycling** bins presents at Christmas too



Green bin

✓ Yes please...

- ✓ Christmas trees - either in the bin (lid must close) or next to it - please cut trees over 5'/1.5m in half.
- ✓ Turkey carcasses and other bones
- ✓ Nut shells
- ✓ Date stones
- ✓ Food can be put in loose, wrapped in paper or in **compostable bags** conforming to EN13432)

Christmas tip - why not use one of Jamie Oliver's Cracking Christmas Left-over Recipes www.jamieoliver.com/christmas/collection/leftovers/

✗ No thanks...

- ✗ Artificial Christmas trees

Recycling bin

✓ Yes please...

- ✓ Large plastic or metal sweet and biscuit tins
- ✓ Cardboard and rigid plastic tray from selection boxes
- ✓ Wrapping paper (not shiny type)
- ✓ Christmas cards

✗ No thanks...

- ✗ Ribbons and bows (Please reuse these)
- ✗ Christmas lights (Please put them in a carrier bag by your bin)
- ✗ Household batteries (Please put them in a carrier bag by your bin)



Your refuse and recycling service

ZONE 1



RUBBISH COLLECTED

Grey Bin collected on days marked black



RECYCLING & GARDEN/FOOD WASTE COLLECTED

Blue Lid Bin and Green Bin collected on days marked white

ZONE 2



RUBBISH COLLECTED

Grey Bin collected on days marked white



RECYCLING & GARDEN/FOOD WASTE COLLECTED

Blue Lid Bin and Green Bin collected on days marked black

To find out which zone you are in please visit www.stratford.gov.uk/bincalendar or phone 01789 260616

DECEMBER 2016				
M	T	W	Th	F
			1	2
5	6	7	8	9
12	13	14	15	16
19	20	21	22	23
26	27	28	29	30

JANUARY 2017				
M	T	W	Th	F
2	3	4	5	6
9	10	11	12	13
16	17	18	19	20
23	24	25	26	27
30	31			

FEBRUARY 2017				
M	T	W	Th	F
		1	2	3
6	7	8	9	10
13	14	15	16	17
20	21	22	23	24
27	28			

MARCH 2017				
M	T	W	Th	F
		1	2	3
6	7	8	9	10
13	14	15	16	17
20	21	22	23	24
27	28	29	30	31



Christmas and New Year arrangements

There will only be one change. Properties due for a collection on Monday 26 December 2016 will be collected on Tuesday 27 December 2016. All other collections will remain the same.

Please note, services will be provided as normal on all other Bank Holidays.



Telephone:
01789 532024
Samantha@cloudbookkeeping.co.uk

- Bookkeeping
- Payroll
- VAT Returns
- Monthly management reports
- Sage Xero and Freeagent experts

VASA
Voluntary Action
Stratford-on-Avon District



Be a ★ and volunteer today!

VASA needs volunteer drivers, community workers, cooks and group co-ordinators for community groups in Stratford District.

Contact: 01789 262889
Email: info@vasa.org.uk
www.vasa.org.uk

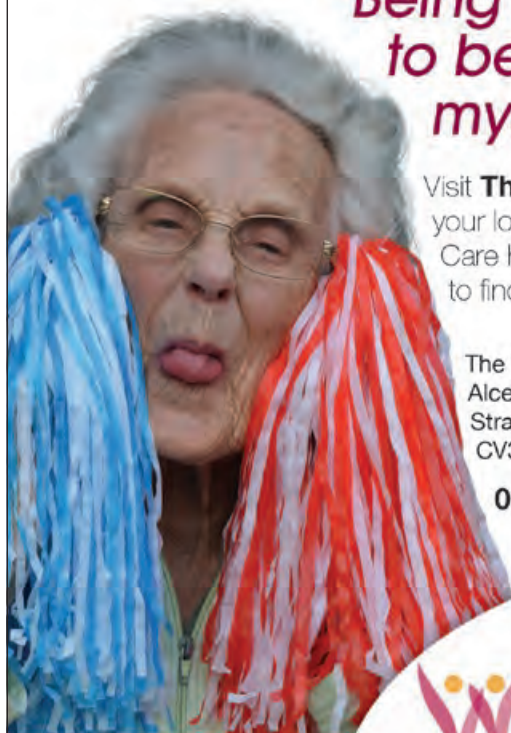
What makes a home,
a home?

*"Being able
to be
myself"*

Visit **The Limes**,
your local WCS
Care home, today
to find out more.

The Limes,
Alcester Road,
Stratford-Upon-Avon,
CV37 6PH

01789 267 076



wcs-care.co.uk

Rated Warwickshire's leading
care home provider by the CQC

WCS CARES
Every day well lived



Planning for you

Want to know what's
happening in your local area?

Want to know about future
planning development?

Then sign up to Stratford-on-Avon District
Council's new online tool.

Step 1 Register free at
www.stratford.gov.uk/planaalert

Step 2 Receive planning information in
your inbox



Tailor-made for you

A simple and easy
way to find out about
planning information in
your neighbourhood

Free Wi-Fi
Free book loans
Plus much more...

**USE
YOUR
LIBRARY**

www.warwickshire.gov.uk/libraries

Follow us on



Warwickshire
County Council



Come and explore Christmas at Coughton Court this winter

Christmas at Coughton, Sat 26 Nov - Sun 4 Dec, for opening times please check the website

Seasonal cheer for all the family awaits at Coughton this winter. With festive shopping, the house dressed for a Throckmorton family Christmas and a traditional market both weekends; there's something for everyone to enjoy.

Call 01789 400 777 for details
nationaltrust.org.uk/coughtoncourt



#nationaltrust

When you visit, donate, volunteer or join the National Trust, your support helps us to look after special places like Coughton Court for ever, for everyone.

© National Trust 2016. The National Trust is an independent registered charity, number 202846. Photography © National Trust Images

KNIGHTS MOT CENTRE

MOT CLASS .IV .IIV & LARGE MOTORHOMES
 SERVICING AND REPAIRS



01789 268140 | ROBERT KNIGHT

UNIT 16, BURTON FARM, BISHOPTON,
 STRATFORD-UPON-AVON, CV37 0RW

Stratford-upon-Avon
Thursday
Christmas
MARKETS
 Bridge Street
 Starting 24th November
 with Light Switch-on
 1st 8th 15th 22nd December 2016
 10.00am till 8.00pm
www.lsdpromotions.com

Do you want to be part of a person centred team who deliver excellent residential care and dementia care?

Then we can offer...

- Full time hours.
- We offer competitive rates of pay.



- Full training
- Paid holiday
- We can provide transport from some pick up points if needed

If you are a caring person and you have a positive out look

Please contact:

Tel: **01789 731 168** or email: home.ard@mha.org.uk



Make sure you're prepared for winter

Winter can bring all sorts of challenges so it's good to be prepared. You'll need to prepare your home for cold weather, storms, or perhaps even flooding. You'll also need to look after your health and the health of those around you.

How can you prepare your home this winter?

1. Seal off drafty windows and doors or consider replacing
2. Consider blanketing and insulating hot water lines
3. Use a programmable thermostat to reduce heating costs
4. Keep all vents and heaters clean
5. If you have a fireplace remember to clean it thoroughly
6. Consider using an energy monitor to identify appliances using the most energy
7. Keep valuables and critical information documents safe during winter to avoid waterlogging or damage this winter.

To learn about winter weather visit:
www.metoffice.gov.uk/learning/get-ready-for-winter

For information of weather impacts on travel visit:
www.metoffice.gov.uk/learning/get-ready-for-winter/travel

Check your car and travel safe this winter, for more information on the winter car check list visit:
www.theaa.com/motoring_advice/seasonal/winter-checklist.html

Winter Health

For information on the symptoms of hypothermia, cold stress, frostnip and frostbite, chilblains and other symptoms of winter illnesses visit: www.nhs.uk/pages/home.aspx

The flu vaccination is available every year on the NHS to help protect adults and children at risk of flu, for information visit:
www.nhs.uk/Conditions/vaccinations/Pages/flu-influenza-vaccine.aspx

Pets in Winter

Pets are important members of the family, but they can't always tell you what they need, so prepare your pets for winter.

For information on how to care for pets in winter visit:
RSPCA: www.rspca.org.uk/adviceandwelfare/seasonal or
Bluecross:
www.bluecross.org.uk/pet-advice/pet-winter-survival-guide



There is a tendency for us all to think that "flooding will never happen to me". The fact is – it could.

Almost 5 million people in England are at risk of flooding and this is only going to increase with a changing climate. The Environment Agency wants to encourage you to act and prepare for a flood.

Have you ever checked to see if you are at risk from flooding? Would you know what to do in a flood? What could you do now to save you time, money and worry if it happened tomorrow?

Visit www.gov.uk/floodsdestroy to take the following simple steps to help protect you, your family and home from flooding.

- Use the Environment Agency's maps to find out if you are at risk from flooding
- Check if free flood warnings are available for your area
- Prepare a personal flood plan

Take these small steps now and help save you time, money and distress in a flood.

Do you know what to do in a flood?



**FLOODS
DESTROY
DESTROY
BE PREPARED**



Environment
Agency

Sign up for free flood warnings to
better protect your family and home

www.gov.uk/floodsdestroy
Floodline 0345 988 1188

Your local District Councillors 2016/2017

1 ALCESTER AND RURAL



Susan Adams
Springfield
Hertford Road
Alcester
B49 6AT
T: 01789 400371
E: susan.adams@stratford-dc.gov.uk

2 ALCESTER TOWN



Eric Payne
3 Sherwell Drive
Alcester
B49 5HA
T: 01789 762577
E: eric.payne@stratford-dc.gov.uk

3 AVENUE



Maurice Howse
17 The Firs
Lower Quinton
Stratford-upon-Avon
CV37 8TJ
T: 07886 904800
E: maurice.howse@stratford-dc.gov.uk

4 BIDFORD EAST



Daren Pemberton
45 Marleigh Road
Bidford-on-Avon
B50 4DF
T: 07970 064759
E: daren.pemberton@stratford-dc.gov.uk

5 BIDFORD WEST AND SALFORD



Mark Cargill
The Bridge House
Oversley Green
Alcester
B49 6LE
T: 07988 485050
E: mark.cargill@stratford-dc.gov.uk

6 BISHOPS ITCHINGTON



Christopher Kettle
Pipers Hill, Gaydon Road
Bishops Itchington
Southam
CV47 2QY
T: 07798 692683
E: chris.kettle@stratford-dc.gov.uk

7 BISHOPTON



Robert Vaudry
The Moat House
Dorsington
Warwickshire
CV37 8AX
T: 07810 123459
E: robert.vaudry@stratford-dc.gov.uk

8 BRAILES AND COMPTON



Stephen Gray
2 Furlong Meadow
Shipston-on-Stour
CV36 4DL
T: 01608 662673
E: stephen.gray@stratford-dc.gov.uk

9 BRIDGETOWN



Lynda Organ
3 Oakleigh Road
Stratford-upon-Avon
CV37 0DW
T: 01789 266278
E: lynda.organ@stratford-dc.gov.uk

10 CLOPTON



Jason Fojtik
9 Eastfield Close
Stratford-upon-Avon
CV37 0DL
T: 07521 128638
E: jason.fojtik@stratford-dc.gov.uk

11 ETTINGTON



Philip Seccombe
Sundale
Lower Tysoe
Warwick
CV35 0BZ
T: 01926 640498
E: philip.seccombe@stratford-dc.gov.uk

12 GUILDHALL



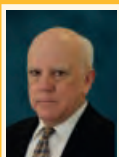
Jennifer Fradgley
92 Banbury Road
Stratford-upon-Avon
CV37 7HY
T: 01789 262522
E: jenny.fradgley@stratford-dc.gov.uk

13 HARBURY



Jacqui Harris
15 Northend Road
Fenny Compton
Southam
CV47 2YZ
T: 07927 639352
E: jacqui.harris@stratford-dc.gov.uk

14 HATHAWAY



Peter Moose
Ington Cottage
Ington Lane
Stratford-upon-Avon
CV37 0QE
T: 01789 269630
E: peter.moore@stratford-dc.gov.uk

15 HENLEY-IN-ARDEN



Stephen Thirlwell
31 Riverside Gardens
Henley-in-Arden
B95 5JX
T: 01564 794594
E: stephen.thirlwell@stratford-dc.gov.uk

16 KINETON



Christopher Mills
10 Fighting Close
Kineton
CV35 0LS
T: 01926 641309
E: christopher.mills@stratford-dc.gov.uk

17 KINWARTON



Mike Gittus
The Old Barn
Walcote Manor Farm
Walcote, Alcester
B49 6LY
T: 01789 488027
E: mike.gittus@stratford-dc.gov.uk

18 LONG ITCHINGTON AND STOCKTON



Dave Riches
93 Banbury Road
Southam
CV47 1HJ
T: 07845 471220
E: dave.riches@stratford-dc.gov.uk

19 NAPTON AND FENNY COMPTON



Chris Williams
23 Meadow Way
Fenny Compton
Southam
CV47 2WD
T: 07771 857816
E: chris.williams@stratford-dc.gov.uk

20 QUINTON



Mike Brain
Marston Edge
Campden Road
Lower Quinton
CV37 8LJ
T: 01789 720728
E: mike.brain@stratford-dc.gov.uk

21 RED HORSE



Bart Dalla Mura
Epwell Grounds
Epwell
Banbury
OX15 6HF
T: 07483 167721
E: bart.dallamura@stratford-dc.gov.uk

22 SHIPSTON NORTH



Chris Saint
Jasmine Cottage
Tredington
Shipston-on-Stour
CV36 4NJ
T: 01608 664048
E: chris.saint@stratford-dc.gov.uk

23 SHIPSTON SOUTH



Jo Barker
Greystones
Stratford Road
Shipston-on-Stour
CV36 4HU
T: 07748 968712
E: jo.barker@stratford-dc.gov.uk

24 SHOTTERY



Molly Giles
10 New Cottages
Shottery Road
Stratford-upon-Avon
CV37 9QH
T: 07786 848027
E: molly.giles@stratford-dc.gov.uk

25 SNITTERFIELD



Peter Richards
20 The Fordway
Lower Quinton
Stratford-upon-Avon
CV37 8QP
T: 07970 588516
E: peter.richards@stratford-dc.gov.uk

26 SOUTHAM NORTH



Tony Bromwich
54 Hodnell Drive
Southam
CV47 1GQ
T: 01926 811965
E: tony.bromwich@stratford-dc.gov.uk

27 SOUTHAM SOUTH



Andrew Crump
1 Hurst Road
Southam
CV47 1HY
T: 01926 815745
E: andrew.crump@stratford-dc.gov.uk

28 STUDLEY WITH MAPPLEBOROUGH GREEN



Justin Kerridge
3 Reinswood Court
Sambourne Lane
Sambourne
B96 6PE
T: 01527 894886
E: justin.kerridge@stratford-dc.gov.uk

29 STUDLEY WITH SAMBOURNE



Hazel Wright
Glenthorne House
17 Station Road
Studley
B80 7HR
T: 01527 852899
E: hazel.wright@stratford-dc.gov.uk

30 TANWORTH-IN-ARDEN



George Atkinson
Heartsease Cottage
Stratford Road
Wootton Wawen
B95 6AR
T: 01564 793478
E: george.atkinson@stratford-dc.gov.uk

31 TIDDINGTON



Kate Rolfe
57 Avon Crescent
Stratford-upon-Avon
CV37 7EZ
T: 01789 550624
E: kate.rolfe@stratford-dc.gov.uk

32 WELCOMBE



Tony Jefferson
37 Rookes Court
Brewery Street
Stratford-upon-Avon
CV37 0TJ
T: 01789 268318
E: tony.jefferson@stratford-dc.gov.uk

33 WELFORD-ON-AVON



Peter Barnes
3 Milcote Road
Weston-on-Avon
Stratford-upon-Avon
CV37 8JX
T: 01789 750837
E: peter.barnes@stratford-dc.gov.uk

34 WELLESBOURNE EAST



Anne Parry
19 John Taylor Way
Moreton Morrell
Warwick
CV35 9DH
T: 07917 117737
E: anne.parry@stratford-dc.gov.uk

35 WELLESBOURNE WEST



Danny Kendall
1 Honeysuckle Lane
Wellesbourne
Warwick
CV35 9SG
T: 01789 601293
E: danny.kendall@stratford-dc.gov.uk

36 WOOTTON WAWEN



Simon Lawton
Wirral House
18 Langley Road
Claverdon
CV35 8PU
T: 07831 682051
E: simon.lawton@stratford-dc.gov.uk



Sambourne Lane, Coughton.
Info@oldschoolnursery.co.uk
Tel: 01789 766040

We cater for children aged
3 months to 5 years old.

Established in 2010 the objective of the nursery is to provide an environment that prepares the children to go to school.

This is done within the framework set out in the EYFS and implemented by our staff, who regularly observe the children and record their progress. This is all done within a warm & friendly setting where the children are encouraged to learn through play.

The aim of the nursery is to be rated as outstanding by Ofsted.



Discover the world of:
The Teddy Bear Shop



Shakespeare Centre Craft Yard
42A Henley Street
Stratford-upon-Avon
(opposite Shakespeare's Birthplace)
01789 267 277

The Pewter Room



Shakespeare Centre Craft Yard
42A Henley Street
Stratford-upon-Avon
CV37 6QW
Tel: 01789 267 277



Changing Your House into a Dream Home



Painting & Decorating • Kitchen Design & Fitting
Bathroom Design & Fitting • Loft & Garage Conversion
House Extension & Renovation • New House Builder
Complete Property Refurbishment • Interior Design
Residential & Commercial Work Undertaken

Call us on

07922 752404

info@jmk-interiorfinishing.co.uk
www.jmk-interiorfinishing.co.uk

Covering
Stratford-upon-Avon,
Leamington Spa,
Warwick, Alcester,
Evesham, Redditch
and
Solihull areas



WHAT DO YOU WANT?

GET LEAN? GET HEALTHY?

GET FIT? GET STRONG?

GET RESULTS?

**YOU NEED A
SHED PT!**



CLINIC

PHYSIOTHERAPY • SPORTS MASSAGE
SPORTS THERAPY • NON MEMBERS WELCOME

CONTACT US:

01789 262095 | sua@trainingshed.com | trainingshed.com

GYM MEMBERSHIP

FREE: INDUCTION | PT SESSION | CLASS

NO LONG CONTRACTS

NO JOINING FEE

MORE THAN...

JUST A GYM

**£35
PER MONTH**



“All I want is...

...someone
who is
interested”

Make a difference.
Foster for Warwickshire.
Warwickshire Fostering Services

www.warwickshire.gov.uk/fostering

Tel: 0800 4081556



Our hospital patients get

**BACK ON THEIR FEET
FASTER**

..... thanks to

ZERO WAITING LISTS
on our self-pay treatments


Swift private hospital care without health insurance.


Getting off a waiting list and getting the hospital treatment you need can be a life changing thing.

That's why at Nuffield Health Warwickshire Hospital in Leamington Spa, we give you the option to skip the wait and go private by paying for your treatment without health insurance.

Our treatment prices are fixed and all-inclusive*, we will meet any comparable price**, and there are no limits on aftercare***.

 **01926 679 542**

 warwickshire.enquiries@nuffieldhealth.com

 **Nuffield Health Warwickshire Hospital**
The Chase, Old Milverton Lane
Leamington Spa
CV32 6RW

 **Nuffield Health**
For the love of life®

Hospitals
+ Gyms + Health Checks + Physio

*Initial consultation(s), diagnostic scans/tests and investigations required to establish a diagnosis are not part of your procedure price. **Not including Private Patient Units at NHS hospitals. Local area defined as within 15 miles of your chosen Nuffield Health hospital. We will match against written quotes only. ***Where necessary, we promise to assist you to receive any follow up advice, treatment or care that is clinically required. Where a prosthesis is required for your procedure, this is guaranteed for the manufacturer's expected prosthesis lifetime. Clinically required indicates where further intervention and/or monitoring of your condition is deemed necessary as a direct result of your procedure. The Nuffield Health Promise applies for patients paying for themselves and excludes fertility services.