

Inset Map 2.6

## Southham

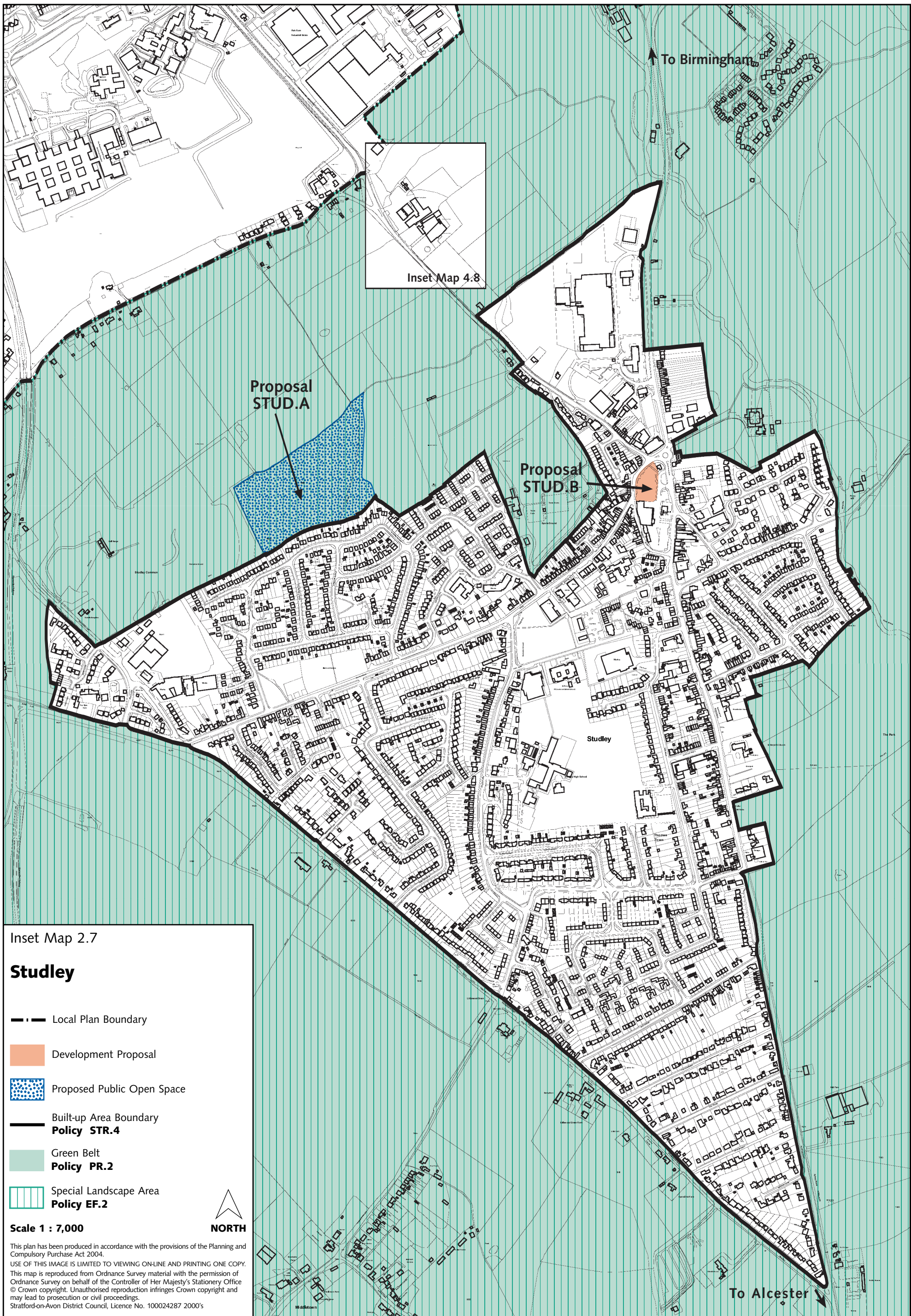
- Development Proposal
- Proposed Public Open Space
- Existing Commitment
- Built-up Area Boundary  
**Policy STR.4**
- Area of Restraint  
**Policy EF.3**
- Scheduled Ancient Monument  
**Policy EF.11** © HM Government
- Conservation Area  
**Policy EF.12**

Scale 1 : 7,000



This plan has been produced in accordance with the provisions of the Planning and Compulsory Purchase Act 2004.  
 USE OF THIS IMAGE IS LIMITED TO VIEWING ON-LINE AND PRINTING ONE COPY.  
 This map is reproduced from Ordnance Survey material with the permission of Ordnance Survey on behalf of the Controller of Her Majesty's Stationery Office  
 © Crown copyright. Unauthorised reproduction infringes Crown copyright and may lead to prosecution or civil proceedings.  
 Stratford-on-Avon District Council, Licence No. 100024287 2000's





Inset Map 2.7

## Studley

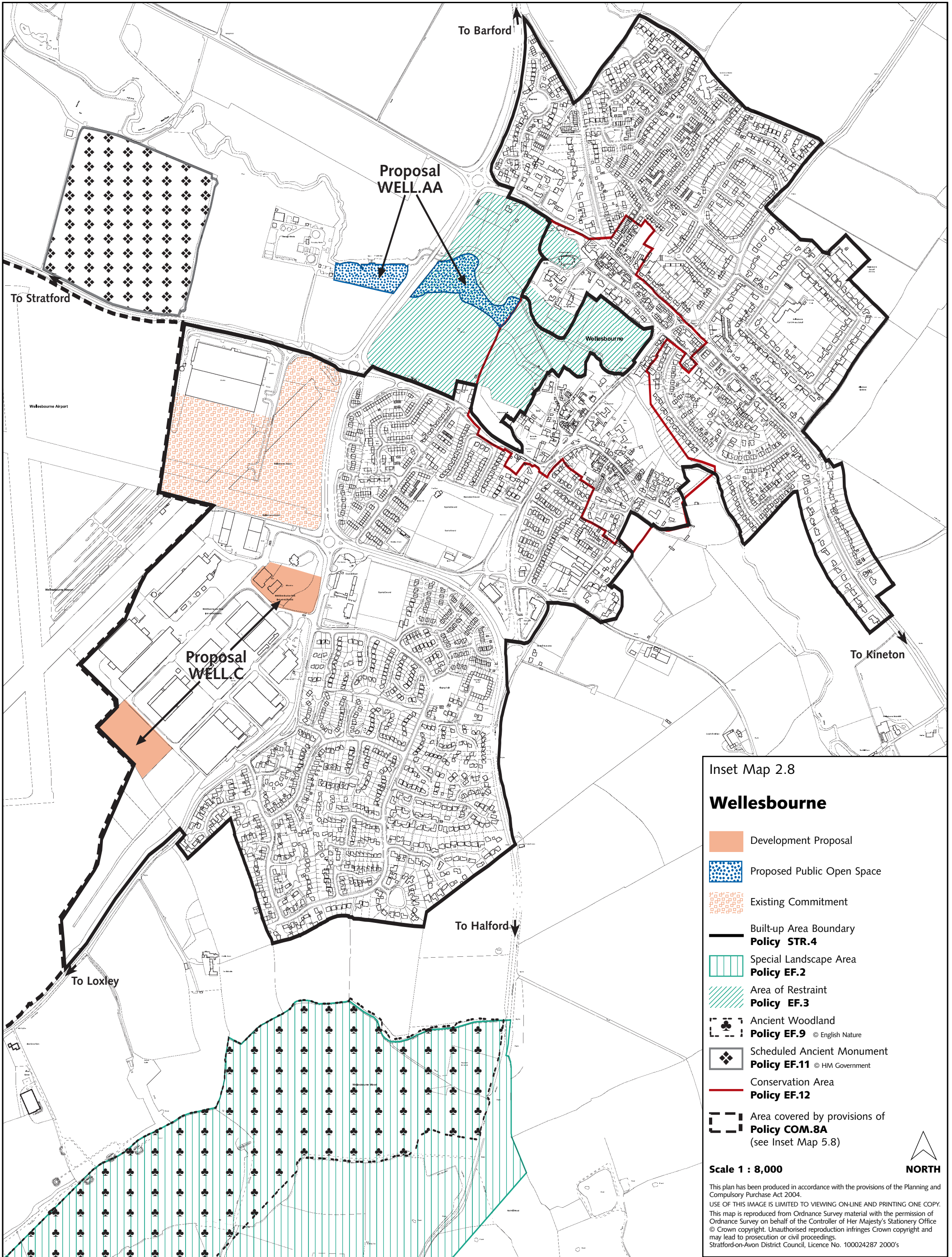
- Local Plan Boundary
- Development Proposal
- Proposed Public Open Space
- Built-up Area Boundary  
**Policy STR.4**
- Green Belt  
**Policy PR.2**
- Special Landscape Area  
**Policy EF.2**

Scale 1 : 7,000



This plan has been produced in accordance with the provisions of the Planning and Compulsory Purchase Act 2004.  
USE OF THIS IMAGE IS LIMITED TO VIEWING ON-LINE AND PRINTING ONE COPY.  
This map is reproduced from Ordnance Survey material with the permission of Ordnance Survey on behalf of the Controller of Her Majesty's Stationery Office © Crown copyright. Unauthorised reproduction infringes Crown copyright and may lead to prosecution or civil proceedings.  
Stratford-on-Avon District Council, Licence No. 100024287 2000's





Inset Map 2.8

Wellesbourne

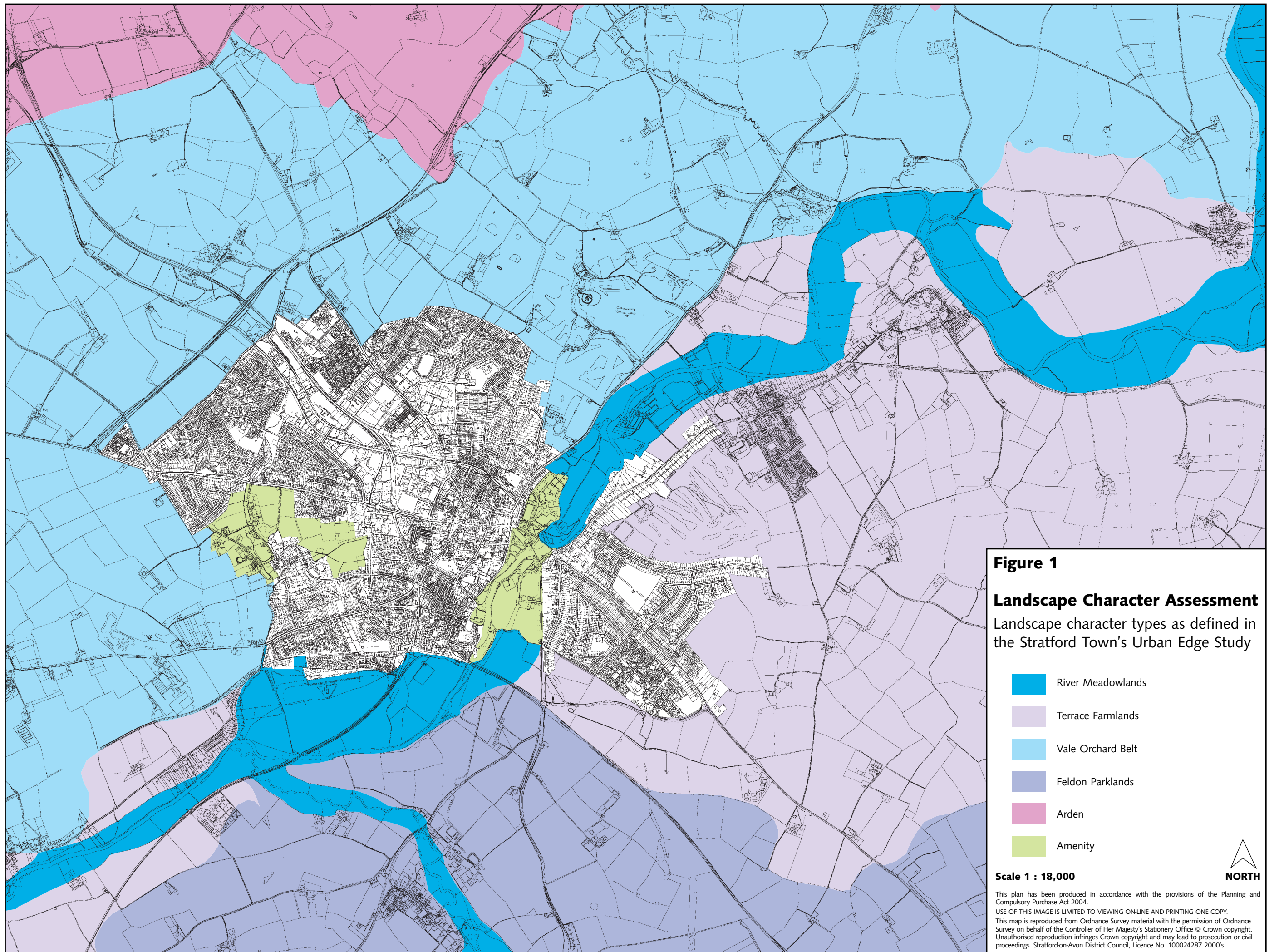
- Development Proposal
- Proposed Public Open Space
- Existing Commitment
- Built-up Area Boundary  
**Policy STR.4**
- Special Landscape Area  
**Policy EF.2**
- Area of Restraint  
**Policy EF.3**
- Ancient Woodland  
**Policy EF.9** © English Nature
- Scheduled Ancient Monument  
**Policy EF.11** © HM Government
- Conservation Area  
**Policy EF.12**
- Area covered by provisions of  
**Policy COM.8A**  
(see Inset Map 5.8)

Scale 1 : 8,000



This plan has been produced in accordance with the provisions of the Planning and Compulsory Purchase Act 2004.  
USE OF THIS IMAGE IS LIMITED TO VIEWING ON-LINE AND PRINTING ONE COPY.  
This map is reproduced from Ordnance Survey material with the permission of Ordnance Survey on behalf of the Controller of Her Majesty's Stationary Office  
© Crown copyright. Unauthorised reproduction infringes Crown copyright and may lead to prosecution or civil proceedings.  
Stratford-on-Avon District Council, Licence No. 100024287 2000's





**Figure 1**  
**Landscape Character Assessment**  
Landscape character types as defined in  
the Stratford Town's Urban Edge Study

-  River Meadowlands
-  Terrace Farmlands
-  Vale Orchard Belt
-  Feldon Parklands
-  Arden
-  Amenity

**Scale 1 : 18,000**



This plan has been produced in accordance with the provisions of the Planning and Compulsory Purchase Act 2004.  
USE OF THIS IMAGE IS LIMITED TO VIEWING ON-LINE AND PRINTING ONE COPY.  
This map is reproduced from Ordnance Survey material with the permission of Ordnance Survey on behalf of the Controller of Her Majesty's Stationery Office © Crown copyright. Unauthorised reproduction infringes Crown copyright and may lead to prosecution or civil proceedings. Stratford-on-Avon District Council, Licence No. 100024287 2000's