

## Stratford-on-Avon District Council

## Ecological and Geological Study of Local Service Villages

## Settlement Assessment: Snitterfield

## Designated sites:

Status Name	Area in hectares	Grid ref.	Description
<b>SSSI</b>			
Snitterfield & Bearley Bushes	61.24	SP2060	Ancient & semi-natural woodland
<b>LWS potential sites</b>			
SP26A1 NA	10.86	SP2166	Semi-natural grasslands & marsh
SP25E1 Hollow	0.89	SP2105	Semi-natural grasslands & marsh
<b>WWT</b> Snitterfield Bushes Reserve			

## Key Target Notes

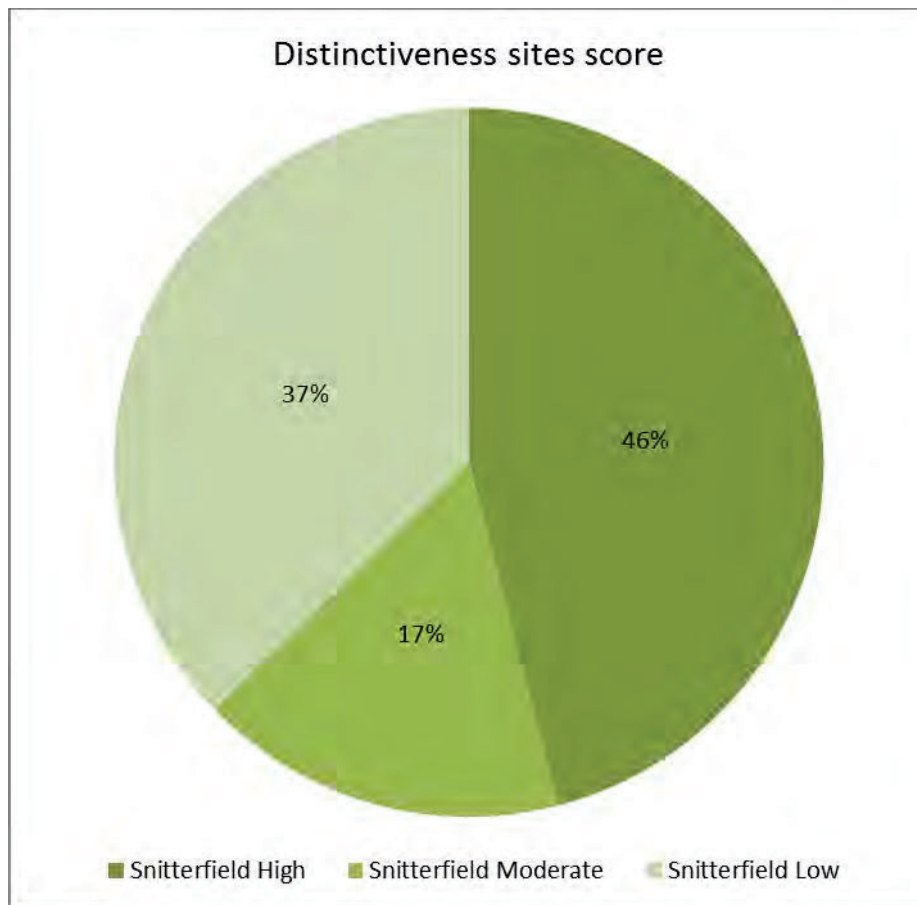
- SP26a15 and SP26a14 – Semi-improved grassland and pond
- SP26a3 – Large pond
- SP25e63 – Semi-improved grassland meadow

## Habitat Description

The settlement study area boundary just intersects the Snitterfield and Bearley Bushes SSSI ancient woodlands but these do not form a significant area contribution to the high distinctiveness. The sites that most contribute to the high distinctiveness are the semi-natural grasslands, orchards and ponds.

There are a number of orchards sites to the south-west of the settlement at Snitterfield Fruit Farm. A number of ponds have been noted throughout the settlement which also contributes to the high distinctiveness score.

<b>Distinctiveness Phase 1 habitats</b>	<b>No. of sites</b>	<b>Area</b>	<b>Score</b>
<b>High</b>			
A111 Broad-leaved semi-natural woodland	9	1.58	27
A5 Orchard (commercial)	9	20.80	27
B22 Semi-improved neutral grassland	15	7.44	45
F1 Swamp	2	0.23	6
G1 Standing water	13	1.15	39
G2 Running water	3	0.86	9
<b>Sub Total</b>	<b>51</b>	<b>32.07</b>	<b>153</b>
<b>Moderate</b>			
A112 Broad-leaved plantation	13	8.90	26
A21 Dense/continuous scrub	4	0.74	8
B6 Semi-improved neutral grassland	8	15.37	16
J113 Set-aside	3	5.18	3
<b>Sub Total</b>	<b>28</b>	<b>30.19</b>	<b>53</b>
<b>Low</b>			
A122 Coniferous plantation	2	0.12	2
A132 Mixed plantation	13	7.00	13
B4 Improved grassland	58	142.02	58
C31 Tall ruderal	4	2.71	8
J11 Arable	21	194.75	21
J12 Amenity grassland	26	12.40	52
<b>Sub Total</b>	<b>124</b>	<b>359.01</b>	<b>154</b>
<b>Totals</b>	<b>203</b>	<b>421.27</b>	<b>360</b>



### Geological Description

Snitterfield has considerable potential for its Triassic geology (Mercia Mudstone Group), and overlying Quaternary deposits. Any excavations into natural geology would be of potential interest for purposes of recording and/or museum collecting.

### Protected Species

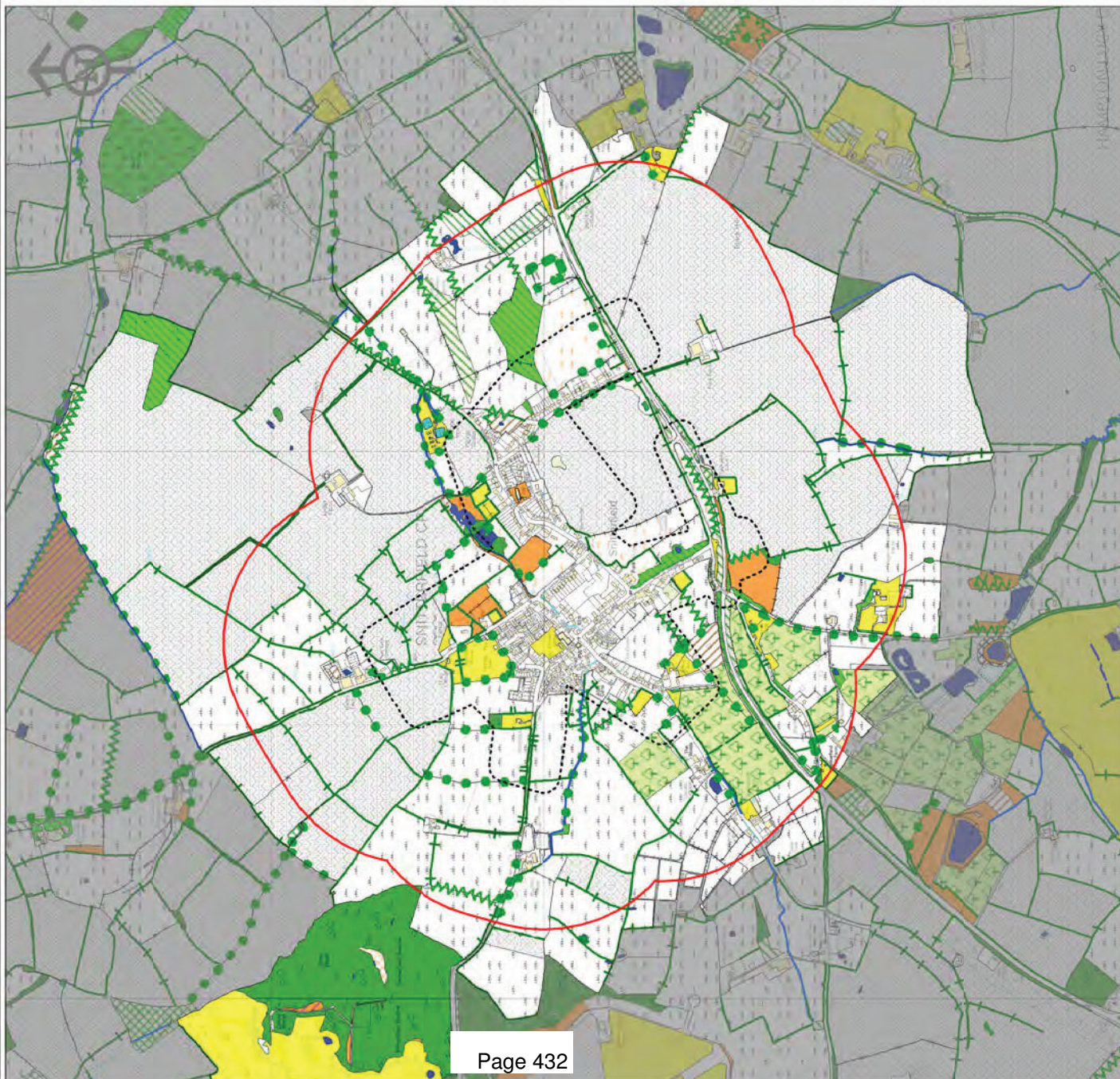
Veteran oak trees, hedgehog, smooth newt, white-letter hairstreak butterfly and harvest mouse with bat species of pipistrelle and brown long-eared plus the rare plant of hairy downy-rose have been recorded in the settlement area. In the wider area there are additional records of great crested newt, grass snake, slow-worm, badger, barn owl, black poplar with additional bat records of noctule, common and soprano pipistrelles, whiskered/brandts, and an bat indeterminate species sp., common and soprano pipistrelle plus butterfly records of small heath, white admiral, grizzled skipper, dingy skipper, white-letter hairstreak and purple emperor. There are also rare plants including herb paris, marsh willowherb, harsh downy-rose, greater plantain ssp., long stalked cranesbill, round leaved cranesbill, meadow saffron, trailing tormentil, an eyebright, fly orchid, fools parsley ssp., wild daffodil, wild pansy and common spike-rush spp. and wild pear in the wider area.

### Recommendations for Further Survey

- Area behind the houses at Church road mix of open grassland, woodland and ponds. Potential local wildlife site reference SP26A1

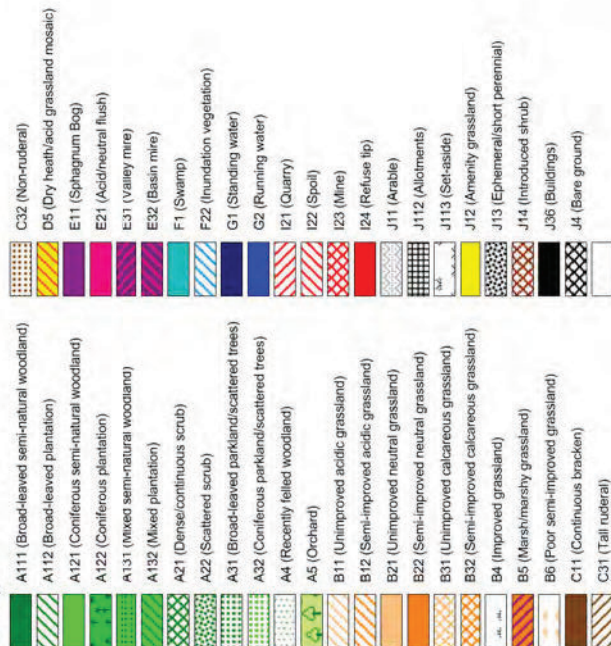


# SNITTERFIELD

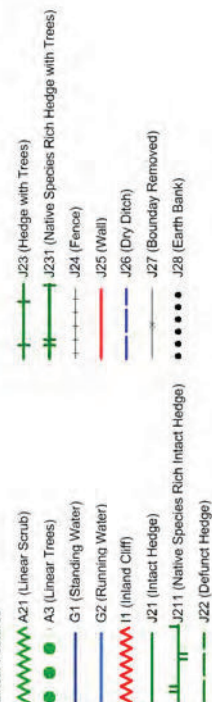


## PHASE 1 HABITAT SURVEY

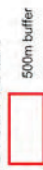
Habitat Types



Linear Features

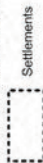


STUDY AREA



500m buffer

OS DEVELOPED LAND USE AREA



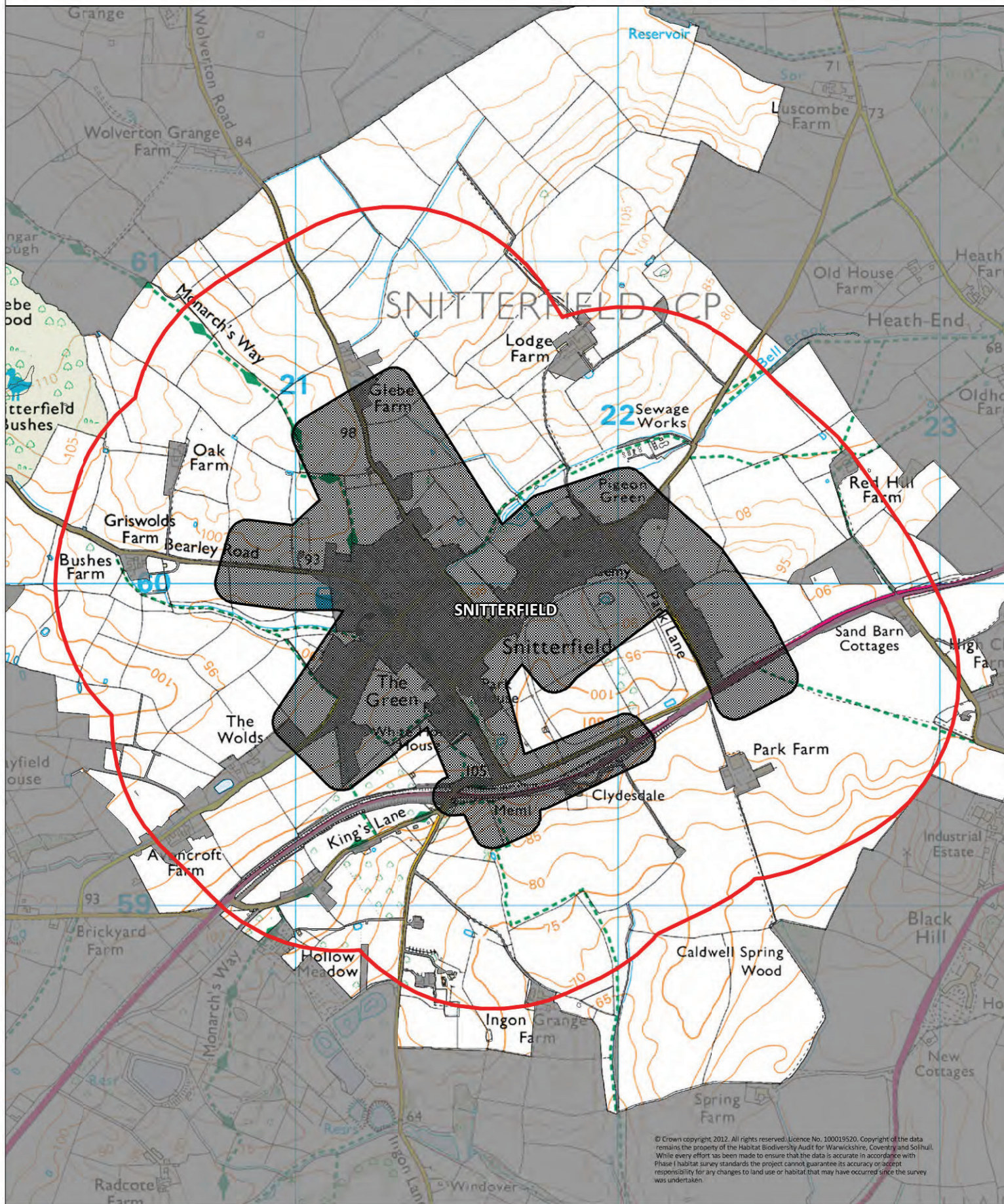
Settlements





# SNITTERFIELD

PRINTED 09/02/2012



© Crown copyright 2012. All rights reserved. Licence No. 100019520. Copyright of the data remains the property of the Habitat Biodiversity Audit for Warwickshire, Coventry and Solihull. While every effort has been made to ensure that the data is accurate in accordance with Phase 1 habitat survey standards the project cannot guarantee its accuracy or accept responsibility for any changes to land use or habitat that may have occurred since the survey was undertaken.

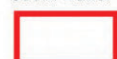
4.9 SQKM

Settlements



Settlements

500m Buffer



500m Buffer



## SNITTERFIELD



Point

Settlements

500m buffer

500m buffer

# Stratford-on-Avon District Council Ecological Villages Study

## Target Notes

### Snitterfield

sp25e14	Neglected grassland dominated by <i>Arrhenatherum elatius</i> ; <i>Dactylis glomerata</i> and <i>Holcus lanatus</i> with frequent <i>Elytrigia repens</i> ; nettle; creeping thistle; broad-leaved dock and occasional <i>Festuca rubra</i> and <i>Poa trivialis</i> .
sp25e15	Neglected grassland dominated by <i>Arrhenatherum elatius</i> ; <i>Dactylis glomerata</i> and <i>Holcus lanatus</i> with frequent <i>Elytrigia repens</i> ; nettle; creeping thistle; broad-leaved dock; cow parsley; hogweed and occasional <i>Festuca rubra</i> ; <i>Poa trivialis</i> ; wild carrot; black knapweed and horse radish. UPDATED 30/03/2012 by OP. Species poor, rough grassland with encroaching scrub.
sp25e2	Semi-improved field with <i>Lolium perenne</i> ; <i>Agrostis stolonifera</i> ; abundant creeping thistle; white clover; chickweed; knotgrass; hop trefoil; yarrow and greater plantain. The hedge boundary is thick with ash; oak; hazel and hawthorn trees and a thick understorey of bramble; elder and herb robert.
sp25e3	Oak and ash woodland with a thick understorey of young ash and hazel. UPDATED 30/03/2012 by OP. No woodland at this location.
sp25e5	Poor semi-improved meadow with frequent <i>Lolium perenne</i> ; <i>Poa pratensis</i> ; <i>Holcus lanatus</i> and <i>Dactylis glomerata</i> with occasional <i>Agrostis tenuis</i> ; <i>Festuca rubra</i> and <i>Phleum pratense</i> . Forbs include frequent red clover; black knapweed and occasional ribwort plantain. There is scattered broad-leaved dock and bramble and dog rose scrub with some elm suckers.
SP25E61	Heavily grazed poor semi-improved grassland with pronounced ridge and furrow and three large veteran oak trees.
SP25E62	Eastern part of this field is not an orchard, but contains very dense bramble. An abundance of bird life. Inaccessible patch of grassland at its centre.
SP25E63	Steep sided field with semi-improved grassland on ridge and furrow. Common chickweed, lady's bedstraw, creeping cinquefoil, meadow foxtail, ribwort plantain, creeping buttercup, yarrow, cowslip. A number of anthills.
SP25E64	Tall unmanaged species rich hedgerow with trees on a steep bank, next to running water. Species include hawthorn, blackthorn, oak, ash, hazel, and holly.
sp25j8	Rough semi-improved grassland along the margins of an arable field dominated by <i>Arrhenatherum elatius</i> and <i>Dactylis glomerata</i> with frequent creeping thistle and nettle. There are scattered lime; ash; poplar and oak trees. UPDATED 02/04/2012 by OP. Area of field margin reduced in size, now covers south east corner only.
sp25j9	Well spaced broad-leaved plantation of poplar over improved grassland with occasional patches of creeping thistle and ragwort.
sp26a1	Poor semi-improved; recently mown hay meadow. Signs of <i>Cynosurus cristatus</i> ; <i>Holcus lanatus</i> ; <i>Phleum pratense</i> ; <i>Dactylis glomerata</i> ; <i>Arrhenatherum elatius</i> ; <i>Elytrigia repens</i> ; <i>Agrostis</i> spp. and <i>Alopecurus pratensis</i> . Forbs include yarrow; common vetch; prickly lettuce; cleavers; ribwort plantain; birds-foot-trefoil; cat's-ear; selfheal; poppy; white dead nettle; whiteclover; and green alkanet. Towards the eastern side there is a small broadleaf plantation with conifers. The area is predominantly oak and ash with some sycamore; holly; sitka spruce; apple; silver birch; field maple; dogwood; horsechestnut and wild service tree.
sp26a10	Semi-improved field with <i>Lolium perenne</i> ; <i>Agrostis stolonifera</i> ; abundant creeping thistle; white clover; chickweed; knotgrass; hop trefoil; yarrow and greater plantain. The hedge boundary is thick with ash; oak; hazel and hawthorn trees and a thick understorey of bramble; elder and herb robert.
sp26a11	Amenity grassland with thick hedgerow boundaries containing ash; field maple; holly; hawthorn; elder; dog rose; blackthorn; sycamore; ivy; bramble; white bryony; abundant black bryony and green alkanet.





sp26a12	Arable field of wheat; recently cut; but with locally abundant fieldpansy and wild pansy near the road.
sp26a13	Large pond forming part of a garden; to which access could not be gained. From the road it was possible to see that the pond was surrounded by greaterwillowherb; mayweed; nettle; prickly sow thistle and abundant cleavers. Itcontains Typha latifolia and is over-looked by mature oak; ash and sycamoretrees.
sp26a14	A green lane adjacent to a stream. Laid hawthorn hedge also includes ash; bramble; white bryony; dogwood and herb robert. The south side of the streamis lined with mature pollarded willow and elder with abundant ivy.
sp26a15	Interesting semi-improved grassland with recently dug pond and island. This has been created by damming the stream which flows through the field. Inthe south west corner of the field is a large area of meadowsweet. Grassesinclude Dactylis glomerata; Lolium perenne; Alopecurus pratensis; Holcuslanatus; Arrhenatherum elatius; Cynosurus cristatus and Agrostis stolonifera. Schoenoplectus lacustris have been planted around the pond edge. Forbs includeshepherd's purse; creeping thistle; greater willow herb; prickly sow thistle;greater knapweed; pineapple weed; scented may-weed; bird's-foot-trefoil; commonvetch; knotgrass; redshank; prickly lettuce; lesser stitchwort; red and whiteclover and chicory . There are two bee hives on the south east side of thefield. The boundary is predominantly made up of trees; including cherry;hawthorn; elder; ash; field maple; hazel and alder.
sp26a16	Area of trees including mature and regenerating grey poplar; with anunderstorey of dogwood; wayfaring; blackthorn and dog rose.
sp26a17	Field of poor semi-improved grassland; containing abundant greaterplantain; dock; creeping thistle; common sorrel; occasional knotgrass;shepherd's purse; nettle; red and white clover and dandelion. Grasses includeDactylis glomerata and Lolium perenne.
sp26a19	Oak and ash woodland with a thick understory of young ash and hazel. UPDATED 29/03/2012 by OP. No woodland at this location.
sp26a2	Hedgerow to the east with elder; ash; ivy; hawthorn; field maple; dogwoodand bramble all present.
SP26A22	St. James the great churchyard. Semi-improved grassland which is mown but not too intensively. Contains abundant primrose, lesser celendine, ground ivy, common dog violet, amongst a number of garden plants.
sp26a3	Large pond with willow; beech and ash surrounding it. Mixture of aquaticplants; including water lily; greater willowherb; water forget-me- not;amphibious bistort; brook lime; water plantain; gypsy-wort; Schoenoplectuslacustris; marsh willow-herb; giant bittercress; great yellow-cress andbog-bean; with heavy blanket-weed cover in open areas. Coots; moorhen;mallards and heron seen. The hedge between the pond and field is largely madeup of ornamental species as well as some hawthorn and bramble.
sp26a4	Poor semi-improved field with Lolium perenne; Holcus lanatus; Phleumpratense; Agrostis capillaris; Dactylis glomerata; self heal; chickweed;bird's-foot-trefoil; red and white clover. Brimstone butterfly were seen here. The field has very good ridge and furrow grade 2/3; which are quite curved;extending to the full length of the field. UPDATED 29/03/2012 by OP. Pronounced ridge and furrow, however the field is rough cattle pasture improved grassland.
sp26a5	Hedge row on the north side of the road with black bryony; elder; bramble;horse chestnut standards; hawthorn; alder; English elm; dog rose; honeysuckle;ivy; meadowsweet; ash and wayfaring tree. The south side is similar incomposition but with more standards of oak and ash. Frequent gate-keeperbutterflies.
sp26a6	Unmown roadside strip. Approximately 5m wide with Phleum pratense; Holcuspollis; bramble; thistle; sorrel and yarrow.
sp26a7	Strip of five metres wide unmown by the hedge with dock; spear-thistle;common sorrel; yarrow; bramble; Holcus mollis and Phleum pratense.



## Target Notes

sp26a8	Road side fence with white bryony; common toadflax and bittersweet growing on and over it.
sp26a9	Amenity area with species rich hedge. Contains ash; field maple; holly; ivy; bramble; hawthorn; elder; dog rose; blackthorn and sycamore. Also contains abundant black bryony and some white bryony with green alkanet frequent along base of hedge.
sp26f13	A series of improved fields that have recently been planted up by broadleaf trees. A number of skylark are
sp26f15	Farm pond dominated by <i>Glyceria fluitans</i> ; <i>Juncus effusus</i> and creeping buttercup. Hawthorn partly
SP26F38	Neglected grassland with a small pond and bramble throughout.



## SNITTERFIELD




Page 438

## SITES OF SPECIAL SCIENTIFIC INTEREST


ISSN

ANCIENT WOODLAND

 Ancient Woodland

## LOCAL WILDLIFE SITES

DEFERRED SITE

LOCAL WILDLIFE SITE

POTENTIAL LOCAL WILDLIFE SITE

LOCAL NATURE RESERVE

LNR

WARWICKSHIRE WILDLIFE TRUST RESERVES

WWT Reserve

### ROADS DEVELOPED LAND USE AREA

Settlements

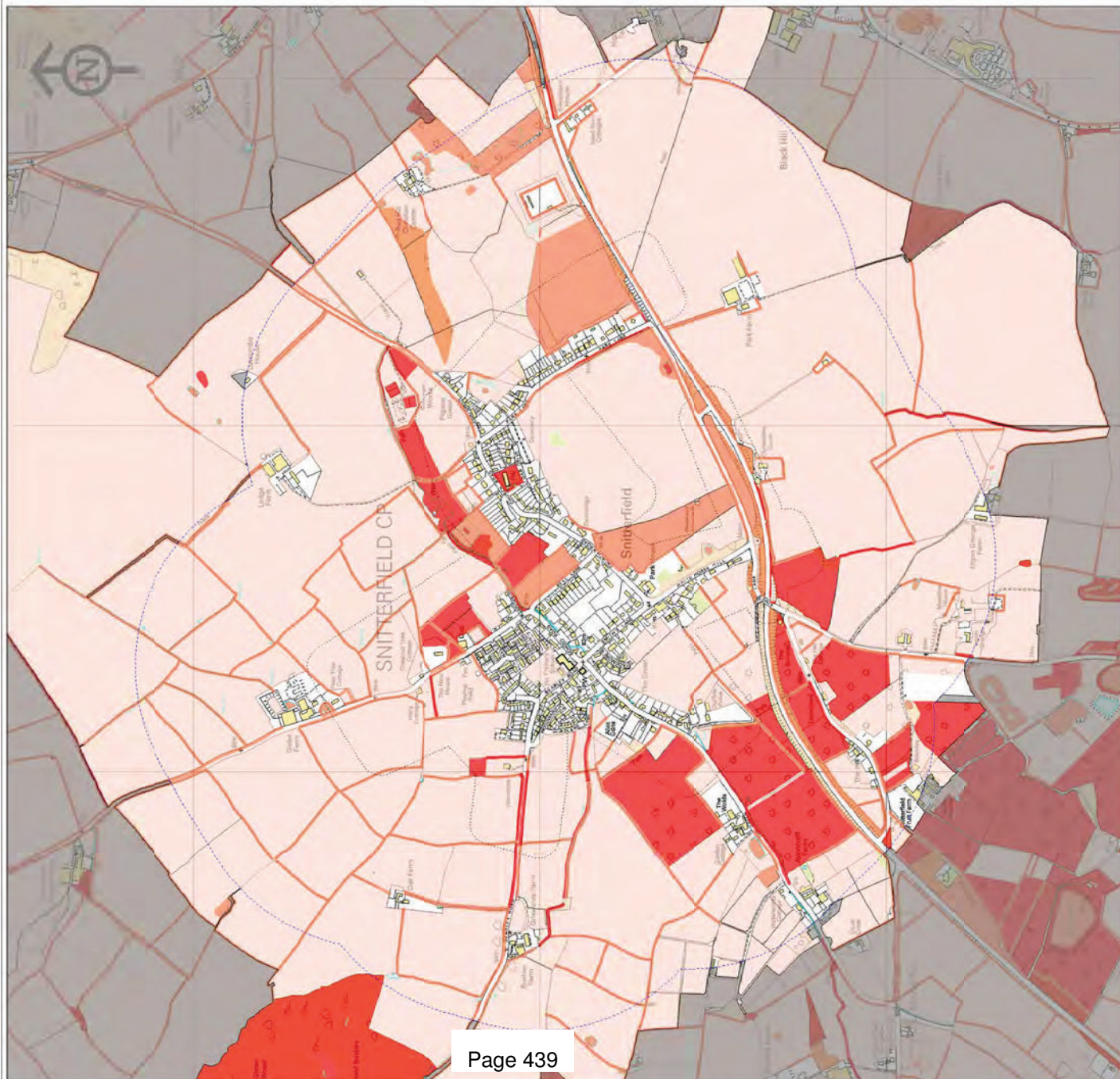
STUDY AREA

500m buffer

© Crown copyright, 2012. All rights reserved. Licence No. 100019520. Copyright of the data remains the property of the Habitat Biodiversity Audit for Warwickshire, Coventry and Solihull. While every effort has been made to ensure that the data is accurate in accordance with Phase 1 habitat survey standards the project cannot guarantee its accuracy or accept responsibility for any changes to land use or habitat that may have occurred since the survey was undertaken.



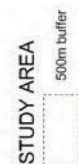
# SNITTERFIELD



## Settlement Distinctiveness

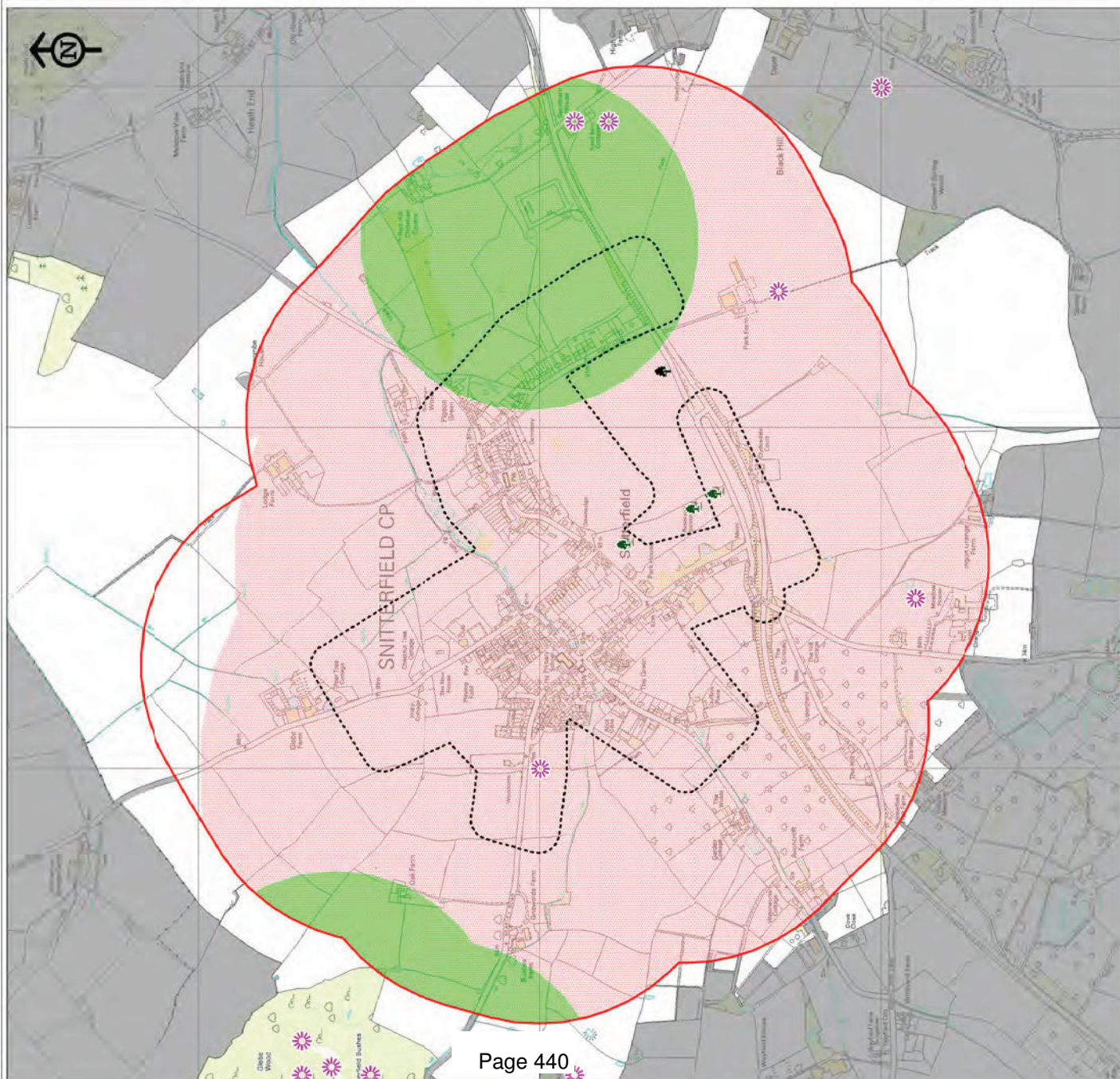


## OS DEVELOPED LAND USE AREA





# SNITTERFIELD



## Species

Buffer zone for water vole or white-clawed crayfish

Buffer zone for protected amphibians and reptiles

Buffer zone for bat

Black Poplar

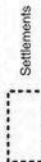
Veteran tree

County rare plant

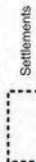
STUDY AREA



OS DEVELOPED LAND USE AREA



500m buffer



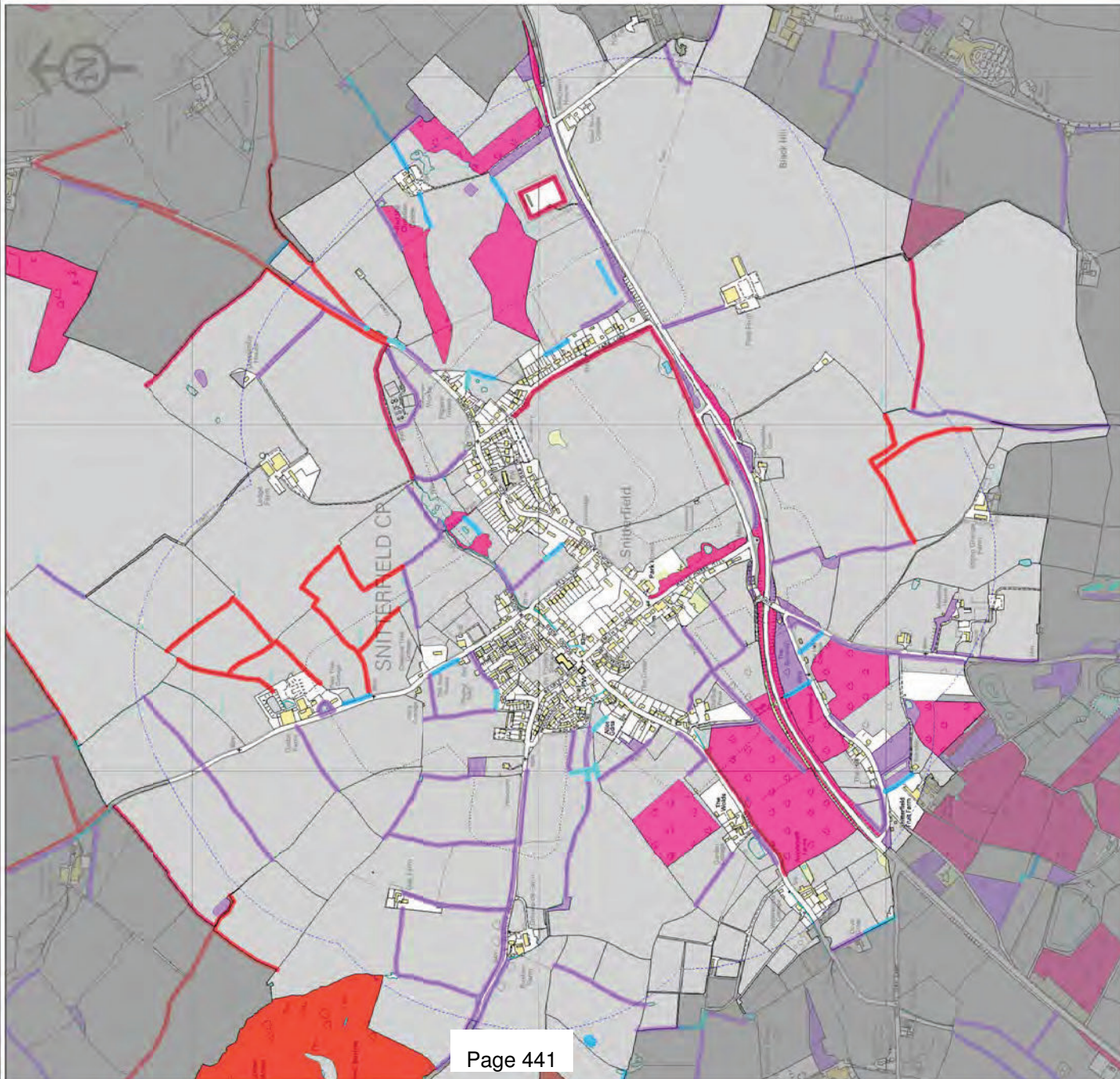
Settlements

Warwickshire Biological Records Centre





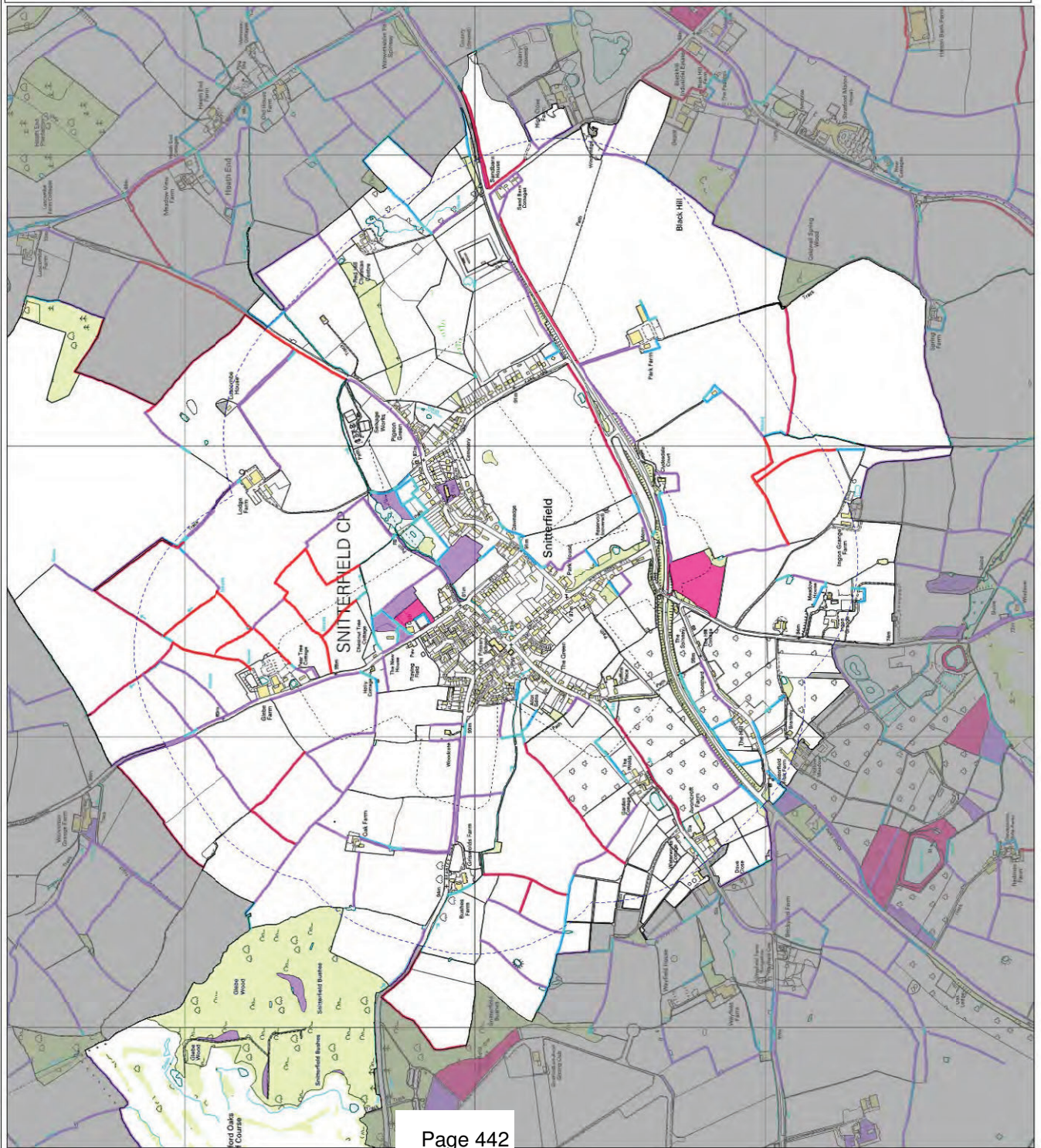
# SNITTERFIELD



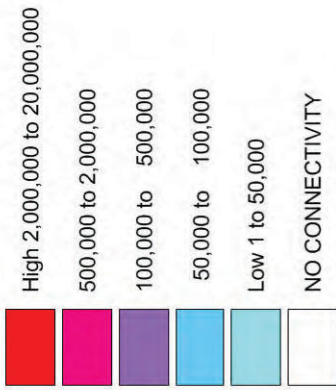




# SNITTERFIELD



## Grassland 1km Connectivity







# SNITTERFIELD



## Stratford-on-Avon District Council

## Ecological and Geological Study of Local Service Villages

## Settlement Assessment: Stockton

## Designated sites:

Status and Name	Area in hectares	Grid ref.	Description
<b>SSSI</b>			
Stockton Railway Cutting & Quarry	24.13	SP4464	Semi-natural grasslands
<b>LWS</b>			
SP46G3 Stockton Grange Farm	7.45	SP4396	Semi-natural grasslands & marsh
<b>LWS potential sites</b>			
SP46H3 Stockton Locks Quarry	0.20	SP4356	Post-industrial sites
SP46G2 Rectory Farm Paddock	0.90	SP4396	Semi-natural grasslands & marsh
SP46M2 Stockton Quarry	9.95	SP4386	Semi-natural grasslands & marsh
SP46M1 Stockton Quarry SSSI	23.77	SP4436	Woodland & scrub
<b>WWT</b> Stockton Cutting Reserve			

## Key Target Notes

- SP46m7 - SP46m12 ; Stockton Quarry SSSI
- SP46m13 and SP46m14 – Stockton Quarry potential local wildlife site
- SP46g11 – SP46g19 ; Stockton Grange Farm meadows LWS

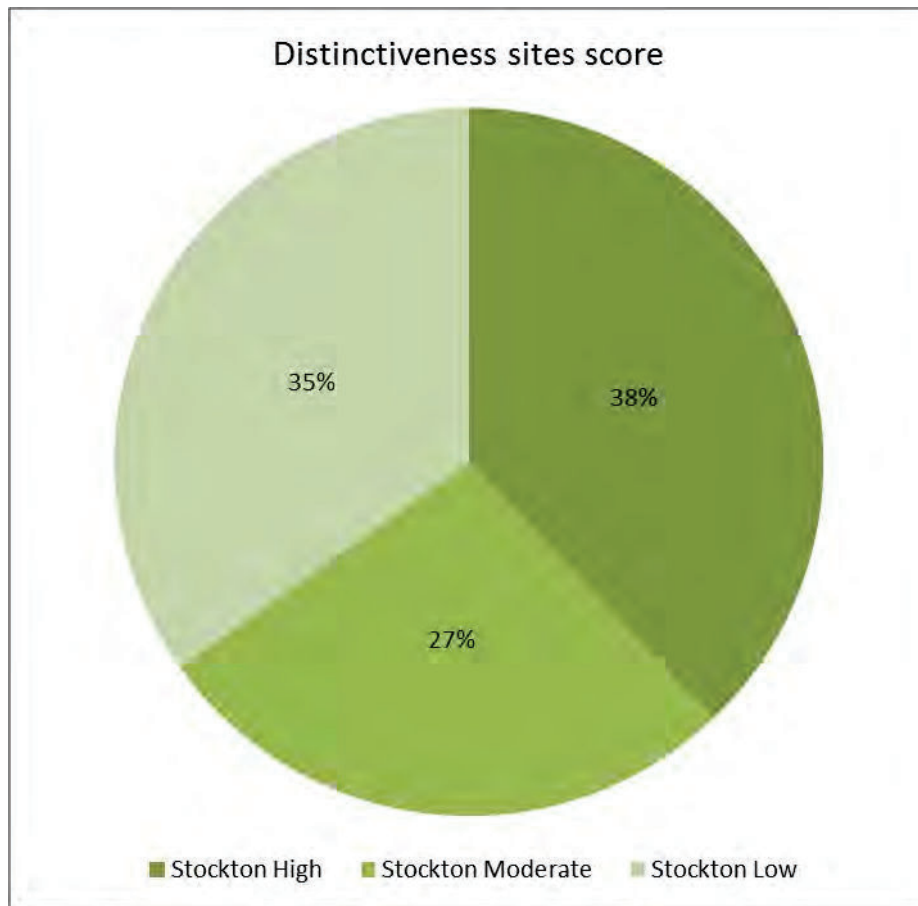
## Habitat Description

Standing water and broad-leaved woodlands at the Stockton Quarry sites are the habitats with the high distinctiveness for the settlement.

The other area of high distinctiveness is the Local Wildlife Site at Stockton Grange Farm Meadows with species rich grasslands recorded.



<b>Distinctiveness Phase 1 habitats</b>	<b>No. of sites</b>	<b>Area in hectares</b>	<b>Score</b>
<b>High</b>			
A111 Broad-leaved semi-natural woodland	9	19.27	27
B22 Semi-improved neutral grassland	2	0.33	6
B31 Unimproved calcareous grassland	1	5.13	3
F1 Swamp	1	0.40	3
G1 Standing water	12	5.01	36
<b>Sub Total</b>	<b>25</b>	<b>30.14</b>	<b>75</b>
<b>Moderate</b>			
A112 Broad-leaved plantation	8	4.42	16
A21 Dense/continuous scrub	10	2.64	20
A22 Scattered scrub	3	1.80	9
B6 Semi-improved neutral grassland	6	12.05	12
<b>Sub Total</b>	<b>27</b>	<b>20.91</b>	<b>57</b>
<b>Low</b>			
A122 Coniferous plantation	1	0.07	1
A132 Mixed plantation	2	1.89	2
B4 Improved grassland	24	64.45	24
C31 Tall ruderal	2	0.83	4
I21 Quarry	1	2.49	1
J11 Arable	17	131.05	17
J12 Amenity grassland	21	10.41	42
J4 Bare ground	1	0.06	1
<b>Sub Total</b>	<b>69</b>	<b>211.23</b>	<b>92</b>
<b>Totals</b>	<b>121</b>	<b>262.28</b>	<b>224</b>



### **Geological Description**

Stockton has considerable potential for its early Jurassic geology (Blue Lias Formation), with opportunities for palaeontological discoveries. Any excavations into natural geology would be of potential interest for purposes of recording and/or museum collecting.

### **Protected Species**

The bat species of common pipistrelle and brown long-eared has been recorded in the settlement area. In the wider area there are additional records of smooth newt, grass snake, great crested newt, badger, water vole, white-clawed crayfish, with butterfly records of small blue, small heath, dingy skipper, grizzled skipper, white-letter hairstreak and wall. There are also rare plants including greater butterfly orchid, trailing tormentil, corn buttercup, short-styled field-rose, wild pansy, common marsh bedstraw ssp., glaucous dog-rose, red hemp-nettle, corn gromwell, blunt-flowered rush in the wider area.

### **Recommendations for Further Survey**

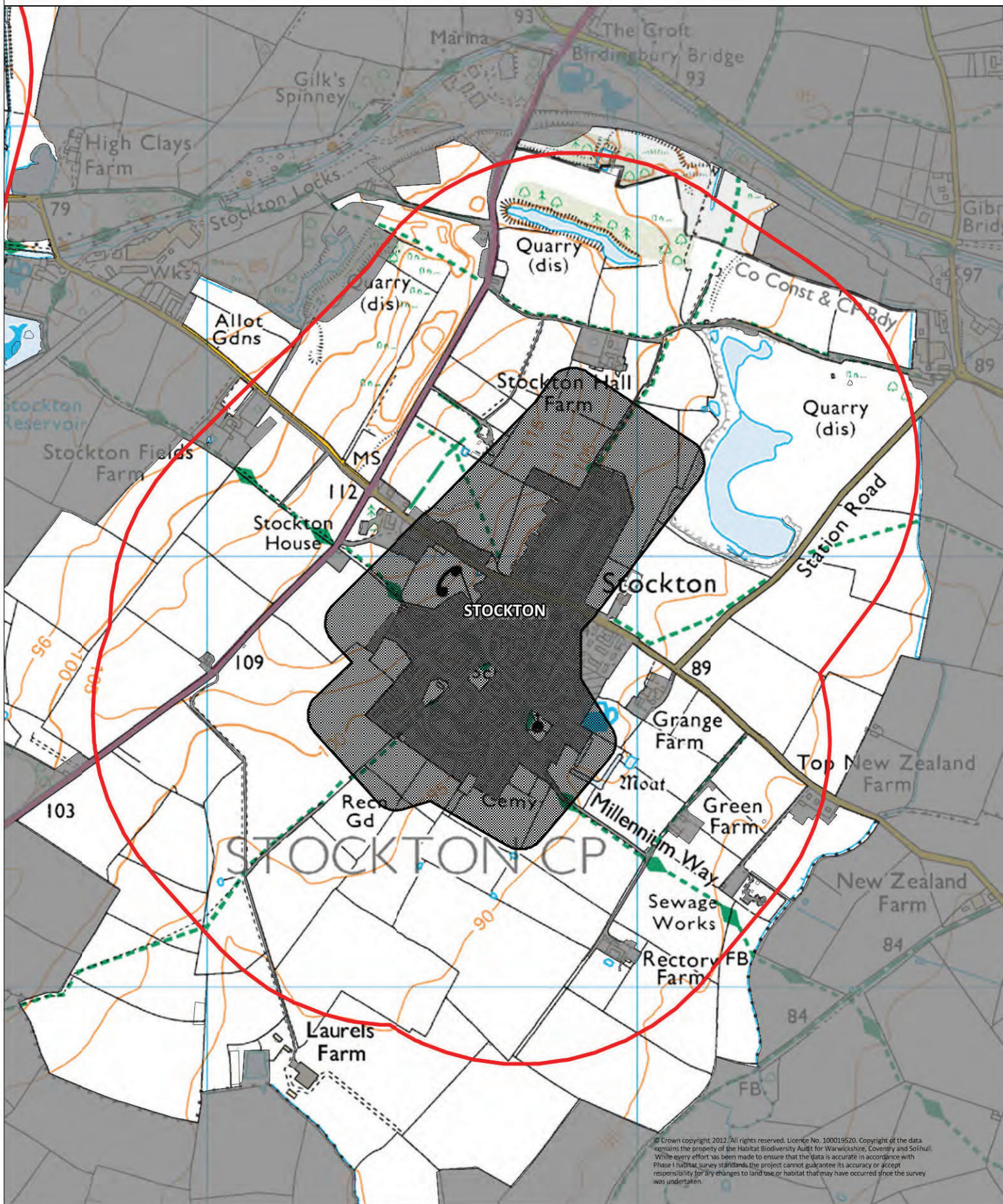
- Stockton Quarry potential wildlife site





# STOCKTON

PRINTED 09/02/2012



© Crown copyright 2012. All rights reserved. Licence No. 100019520. Copyright of the data remains the property of the Habitat Biodiversity Audit for Warwickshire, Coventry and Solihull. While every effort has been made to ensure that the data is accurate in accordance with Phase 1 habitat survey standards the project cannot guarantee its accuracy or accept responsibility for any changes to land use or habitat that may have occurred since the survey was undertaken.

2.9 SQKM

Settlements



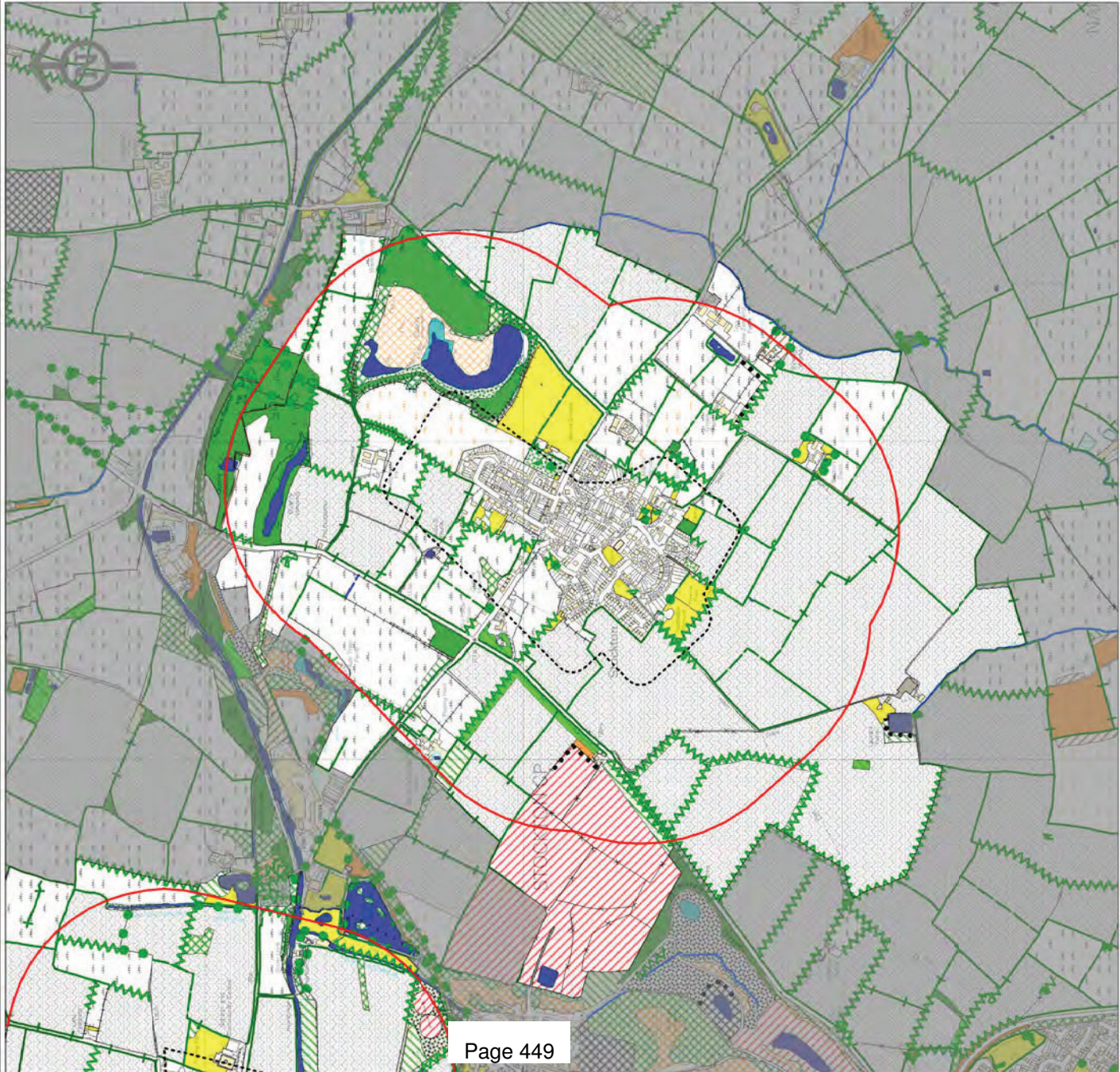
Settlements

500m Buffer



500m Buffer





# PHASE 1 HABITAT SURVEY

Habitat Types

A111 (Broad-leaved semi-natural woodland)	C32 (Non-ruderal)
A112 (Broad-leaved plantation)	D5 (Dry heath/acid grassland mosaic)
A121 (Coniferous semi-natural woodland)	E11 (Sphagnum Bog)
A122 (Coniferous plantation)	E21 (Acid/neutral flush)
A131 (Mixed semi-natural woodland)	E31 (Valley mire)
A132 (Mixed plantation)	E32 (Basin mire)
A21 (Dense/continuous scrub)	F1 (Swamp)
A22 (Scattered scrub)	F22 (Inundation vegetation)
A31 (Broad-leaved parkland/scattered trees)	G1 (Standing water)
A32 (Coniferous parkland/scattered trees)	G2 (Running water)
A4 (Recently felled woodland)	I21 (Quarry)
A5 (Orchard)	I22 (Spoil)
B11 (Unimproved acidic grassland)	I23 (Mire)
B12 (Semi-improved acidic grassland)	I24 (Refuse tip)
B21 (Unimproved neutral grassland)	J11 (Arable)
B22 (Semi-improved neutral grassland)	J112 (Allotments)
B31 (Unimproved calcareous grassland)	J113 (Self-seed)
B32 (Semi-improved calcareous grassland)	J12 (Amenity grassland)
B4 (Improved grassland)	J13 (Ephemeral/short perennial)
B5 (Marsh/marshy grassland)	J14 (Introduced shrub)
B6 (Poor semi-improved grassland)	J36 (Buildings)
C11 (Continuous bracken)	J4 (Bare ground)
C31 (Tall ruderal)	

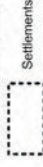
Linear Features

A21 (Linear Scrub)	J23 (Hedge with Trees)
A3 (Linear Trees)	J231 (Native Species Rich Hedge with Trees)
G1 (Standing Water)	J24 (Fence)
G2 (Running Water)	J25 (Wall)
I1 (Inland Cliff)	J26 (Dry Ditch)
J21 (Intact Hedge)	J27 (Boundary Removed)
J211 (Native Species Rich Intact Hedge)	J28 (Earth Bank)
J22 (Defunct Hedge)	

STUDY AREA



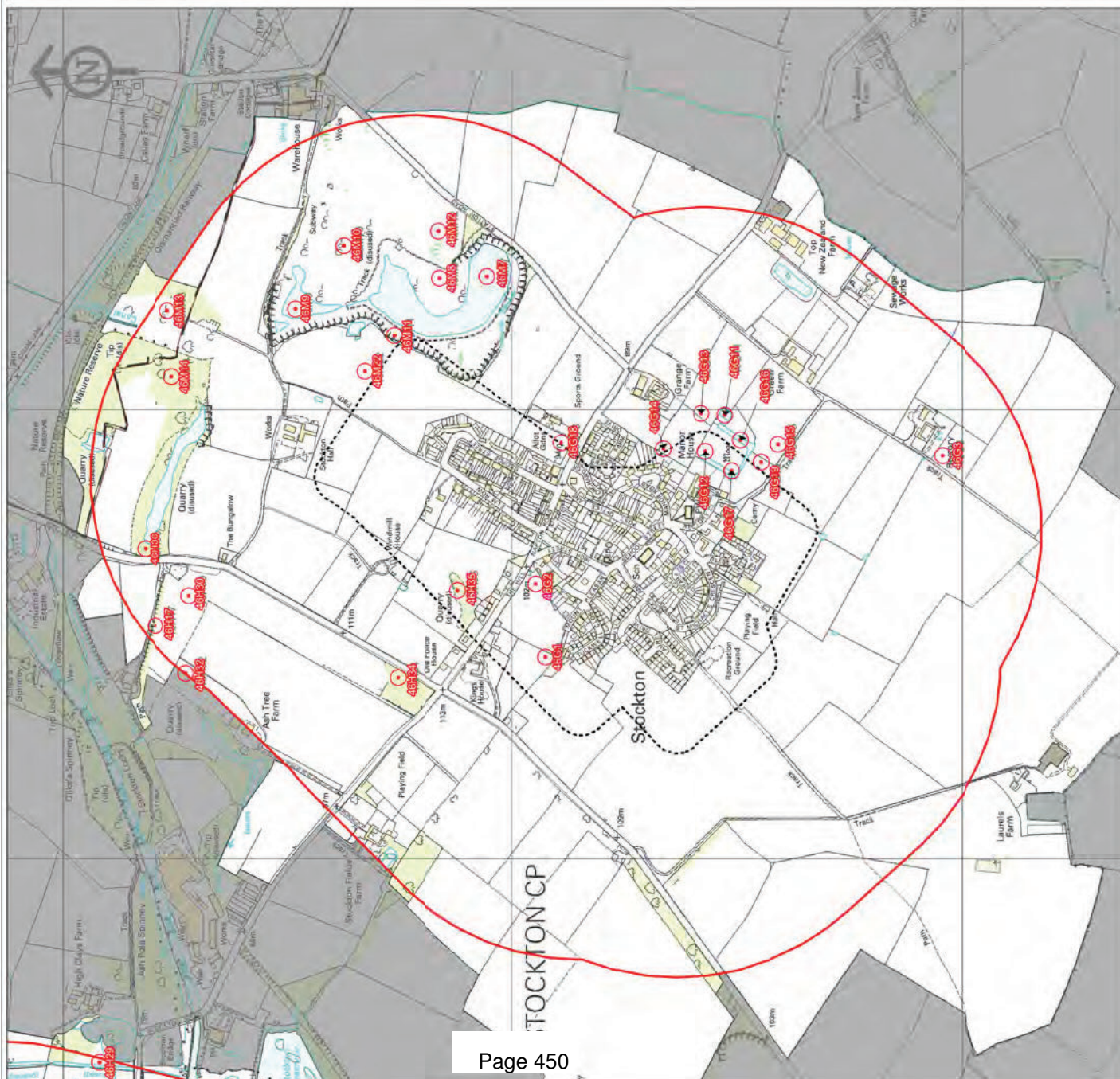
OS DEVELOPED LAND USE AREA



Settlements



## STOCKTON



**TARGET NOTES**

Point 

**LOS DEVELOPED LAND USE AREA**

Settlements 

**STUDY AREA**

 500m buffer

© Crown copyright, 2012. All rights reserved. Licence No. 100019520. Copyright of the data remains the property of the Habitat Biodiversity Audit for Warrackshire, Coventry and Solihull. While every effort has been made to ensure that the data is accurate in accordance with Phase 1 habitat survey standards the project cannot guarantee its accuracy or accept responsibility for any changes to land use or habitat that may have occurred since the survey was undertaken.



# Stratford-on-Avon District Council Ecological Villages Study

## Target Notes

### Stockton

sp46g1	This site had been cut shortly before the visit. It did appear that it may have been semi improved grassland however. Visited on 16/10/07 by MF: Semi-improved grassland confirmed. UPDATED 14/05/2012 MF. Improved grassland. Does not have characteristics of poor semi-improved grassland. Dominant grass is cocks foot. Dominant forbs are creeping thistle, cow parsley, with occasional common nettle and cleavers.
sp46g11	Elm regeneration; with dead elm wood still present. This is taking place under occasional ash and oak wood. There is a small dry pond in the east side of the site; surrounded by willow and hawthorn; with abundant fools watercress over the site.
sp46g12	Appears to be an improved field but the landowner reports that it contains cowslips and other flowering plants. UPDATED 14/05/2012 MF. Poor semi-improved grassland, forbs of note, yellow nettle and occasional cowslip.
sp46g13	Appears to be an improved field but the landowner reports that it contains cowslips and other flowering plants.
sp46g14	Appears to be an improved field but the landowner reports that it contains cowslips and other flowering plants. UPDATED 14/05/2012 MF. Unable to access field but viewed from fence. Vetch sp were clearly present. Many cowslips to north east side of meadow. Field has characteristics of poor semi-improved grassland. Meadow vetchling red cleaver and meadow vetchling also present.
sp46g15	Appears to be an improved field but the landowner reports that it contains cowslips and other flowering plants. UPDATED 14/05/2012 MF. Poor semi-improved grassland. Only plant in flower at time of survey were dandelion. However, yellow nettle and vetch spp were present in north meadow. (T19) and very occasional cowslip is the south (T15).
sp46g16	Pond covered in duck weed; with occasional Typha latifolia; branched bur-reed and Schoenoplectus lacustris around the edges. There is much foolswatercress growing into the water from the sides. Visited on 16/10/07 by MF: Moat has been dredged and cleaned of scrub along SE facing side. At time of visit reeds were starting to establish along banks, however some trees and a little scrub still remain and may re-establish if not managed. Landowner has stocked with fish (including some exotic species -- goldfish, koi carp) and claims regular moorhen, heron and kingfisher (non-nesting), and a visit from a cormorant.
sp46g17	Dry section of old moat; which is completely covered by dense scrub. Visited on 16/10/07 by MF: Scrub cleared. Now grass lawn with scrub either side. UPDATED 14/05/2012 MF. Mr. Leeson is land owner. Area remains as described, moat is no dry ditch with is regularly mown.
sp46g18	Dominated by Arrhenatherum elatius; Holcus lanatus and Dactylis glomerata; with frequent field bindweed; nettles and creeping thistle. UPDATED 14/05/2012 MF. Area now dominated by hawthorn, dog rose, bramble and willows. There are occasional ash saplings. Dominant grasses are cocks foot and false oat grass.
sp46g19	Appears to be an improved field but the landowner reports that it contains cowslips and other flowering plants. UPDATED 14/05/2012 MF. Poor semi-improved grassland. Only plant in flower at time of survey were dandelion. However, yellow nettle and vetch spp were present in north meadow. (T19) and very occasional cowslip is the south (T15).
sp46g2	Dominated by Arrhenatherum elatius; Holcus lanatus and Dactylis glomerata; with frequent field bindweed; nettles and creeping thistle. UPDATED 14/05/2012 MF. Area was difficult to view but appears to now be a part of larger garden. Surrounded by trees and scrub.



sp46g3	A small horse grazed paddock; with <i>Dactylis glomerata</i> ; <i>Lolium perenne</i> ; <i>Hordeum secalinum</i> and <i>Phleum pratense</i> . There are occasional creeping and spearthistle; dock and creeping buttercup across the site; with occasional tolocally frequent red bartsia; cut leaved cranesbill; selfheal; common cats ear; yarrow; great plantain and ragwort. UPDATED 14/05/2012 MF. Improved grassland in small ridge and furrow meadow. Patches of nettle dominate, however there are occasional cowslip and cranes bill spp.
sp46h17	A narrow strip of scrub dominated by hawthorn with occasional mature ash trees. UPDATED 09/04/2012 MF. Remains as described.
sp46h30	An area of tall ruderals dominated by nettles; creeping thistle and great willow herb; with frequent patches of teasel; perennial sow thistle; coltsfoot; oxeye daisy; black knapweed and hedge woundwort; there is occasional woolly thistle; scarlet pimpernel; common field speedwell and a small amount of elder and hawthorn scrub in the centre of the field. There is a hawthorn and ash hedge on the south side of the field. UPDATED 13/04/2012 MF. Rank grassland with marshy areas to south east. At time of survey, ground ivy, silver reed, teasel, ribwort plantain, and creeping thistle were the dominant forbs. There were occasional hawthorn bushes establishing and bramble in patches especially to the north west.
sp46h32	Semi improved grassland dominated by <i>Brachypodium pinnatum</i> ; with frequent <i>Arrhenatherum elatius</i> . There is a large pond which is used for fishing which is part of the old quarry site. Most of the field is flat except for the banks around the pond which are quite steep and vegetated. The dominant grass around the water is <i>Phragmites australis</i> there are also some large reed beds which were too far away to be identified. There is a hedge to the west of the field dominated by hawthorn and English elm. The rest of the field contains a diverse range of vegetation; much of which are indicators of calcareous soils. These include dominant coltsfoot frequent ribwort plantain; dog rose; brambles; red clover; wild carrot; creeping cinquefoil; black knapweed and common centaury with patches of teasel and occasional burnet saxifrage; perforate St John's wort; birds foot trefoil and selfheal. The area to the east of this area through the belt of scrub which is also marked as semi improved contains the same type of vegetation.
sp46h34	An area of very dense semi natural woodland dominated by ash with some hawthorn and a hawthorn and blackthorn hedge on all sides. Other trees in the wood include crab apple and frequent field maple with some elder in the understorey. The ground cover is dominantly ivy. UPDATED 09/04/2012 MF. Remains as described with additional species of holly and abundant wild garlic at woodland edges.
sp46h35	There is a steep bank on the south west side of a horse grazed field. Hawthorn scrub covers this slope; there is no vegetation under this but at the bottom of the slope there is a patch of nettles. UPDATED 13/04/2012 MF. Remains as described, however there are also many mature elder and an ash tree. Ground flora is still dominated by nettle but there is also germander speedwell.
sp46h36	This pond and woodland is part of the old quarry site it is a designated nature reserve and part of a SSSI. The bank slopes very steeply away from the road towards the pool and is densely wooded so access to this part of the reserve was not obtained. The site was previously surveyed on the 31.07.86 (recorder site no. 1740). These notes state that the pools act as reservoirs for the local cement works. It is an important site for butterflies and supports a number of calcicole species which are not often found in Warwickshire. The dominant trees in the wood beside the road are ash and sycamore. UPDATED 09/04/2012 MF. Unable to access, however appears to remain as described. Fishing maybe allowed judging by the signs near an entrance gate (padlocked).





sp46m10	Stockton Quarry SSSI. A mosaic of hawthorn/dog rose scrub; bare ground and various small herbs. At the time of the survey much of the vegetation present had died back and the following has been taken from the SSSI notification details. Associated species to this site include eyebright; yellow wort; fairy flax; woolly thistle; blue fleabane; autumn gentian; <i>Poa compressa</i> ; and orchids including greater butterfly orchid and bee orchid. The quarry site is also noted as one of the most important butterfly areas in Warwickshire with large colonies of small blue at the northern edge of its range; marbled white; green hairstreak; common blue; dingy skipper; grizzled skipper and of particular note is the presence of wood white and white letter hair streak. UPDATED 18/07/2011 DS. No access.
sp46m11	The west edge of the quarry site has become heavily vegetated by ash trees with hawthorn scrub common below. The ground beneath this is very wet in places and <i>Phragmites australis</i> often dominates with occasional marsh thistle <i>Juncus inflexus</i> <i>Carex hirta</i> ; <i>Juncus acutiflorus</i> and great willow herb. In places the ground is drier and a mix of grasses and forbs is found beneath the trees. <i>Dactylis glomerata</i> ; <i>Holcus lanatus</i> and <i>Arrhenatherum elatius</i> are frequent with agrimony; selfheal; bramble; dock; <i>Brachypodium sylvaticum</i> ; creeping cinquefoil; eyebright; <i>Carex otrubae</i> ; imperforate St John's wort; and black knapweed. UPDATED 18/07/2011 DS. No access.
sp46m12	An area of dense hawthorn scrub with much elm regeneration. There is also frequent wild privet and brambles here. UPDATED 18/07/2011 DS. No access.
sp46m13	Semi improved grass and scattered to dense scrub. There are several large areas dominated completely by Japanese knotweed. <i>Arrhenatherum elatius</i> ; <i>Dactylis glomerata</i> ; <i>Holcus lanatus</i> ; with nettle; ragwort and rosebay willow herb dominate this site. Occasional creeping and spear thistle; hogweed; common centaury; red bartsia; stone parsley; eyebright; perforate St John's wort and tall melilot. Hawthorn; dog rose; ash and willow are present. UPDATED 18/07/2011 DS. As described, however bramble scrub has overtaken a lot of the grassland. UPDATED 13/04/2012 MF. Area now dominated by scrub and semi-natural woodland. Additional species include field maple, silver birch, crab apple. Japanese knotweed is present in the south of the site only.
sp46m14	Ash and sycamore dominated woodland; with elder; sycamore and elm regeneration frequent in the understorey. A sparse ground layer contains only ivy; dog violet; wood avens and occasional <i>Brachypodium sylvaticum</i> . UPDATED 13/04/2012 MF. Remains as described. However there are areas of unimproved neutral grassland to the north in which common orchid and possible marsh orchid were identified. This forms part of the SSSI.
SP46M22	rank grassland with very few interesting forbs, although there are occasional vetch spp. Donk grasses appear to be cocks foot and fake oats grass. At time of survey surface soil was waterlogged. Hawthorn, willow, dog rose, scattered scrub present.
sp46m7	Stockton Quarry SSSI. The large lagoon in the quarry is very steep sided; with occasional emergent vegetation around the edge in isolated but often sizeable stands. The species recorded are <i>Typha angustifolia</i> ; <i>Schoenoplectus lacustris</i> ; white water lily; broad leaved pondweed and Canadian waterweed frequent also. Occasional areas of <i>Phragmites australis</i> around the southern part of the lagoon become more frequent to the north where they form large reedbeds in places. There is occasional <i>Phalaris arundinacea</i> associated with these beds. UPDATED 18/07/2011 DS. No access.
sp46m8	Stockton Quarry SSSI. A mosaic of hawthorn/dog rose scrub; bare ground and various small herbs. At the time of the survey much of the vegetation present had died back and the following has been taken from the SSSI notification details. Associated species to this site include eyebright; yellow wort; fairy flax; woolly thistle; blue fleabane; autumn gentian; <i>Poa compressa</i> ; and orchids including greater butterfly orchid and bee orchid. The quarry site is also noted as one of the most important butterfly areas in Warwickshire with large colonies of small blue at the northern edge of its range; marbled white; green hairstreak; common blue; dingy skipper; grizzled skipper and of particular note is the presence of wood white and white letter hair streak. UPDATED 18/07/2011 DS. No access.



## Target Notes

sp46m9

Stockton Quarry SSSI. The smaller of two lagoons with a large area of *Typha angustifolia* and occasional *Phragmites australis* in the southern point. The *T angustifolia* is present as a continuous belt around the margins. A small area of *Schoenoplectus lacustris* is visible in the centre. UPDATED 18/07/2011 DS. No access.





## STOCKTON



### SITES OF SPECIAL SCIENTIFIC INTEREST

 ISSN

ANCIENT WOODLAND

**Ancient Woodland**

## LOCAL WILDLIFE SITES

DEFERRED SITE

LOCAL WILDLIFE SITE

POTENTIAL LOCAL WILDLIFE SITE

LOCAL NATURE RESERVE

LNR

WARWICKSHIRE WILDLIFE TRUST RESERVES

WWT Reserve

### ROADS DEVELOPED LAND USE AREA

Settlements

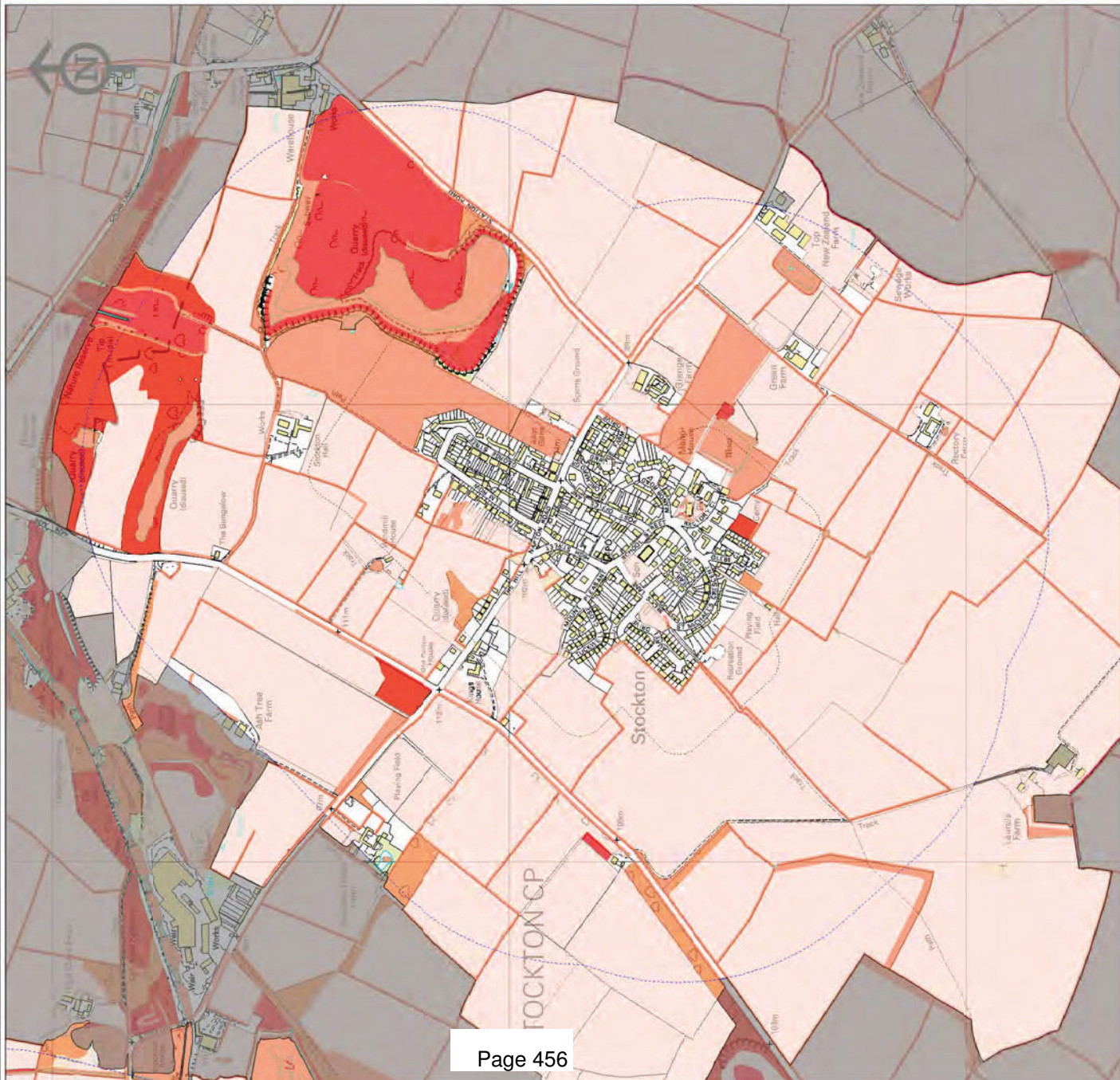
STUDY AREA

500m buffer

© Crown copyright, 2012. All rights reserved. Licence No. 100019520. Copyright of the data remains the property of the Habitat Biodiversity Audit for Warwickshire, Coventry and Solihull. While every effort has been made to ensure that the data is accurate in accordance with Phase 1 habitat survey standards the project cannot guarantee its accuracy or accept responsibility for any changes to land use or habitat that may have occurred since the survey was undertaken.

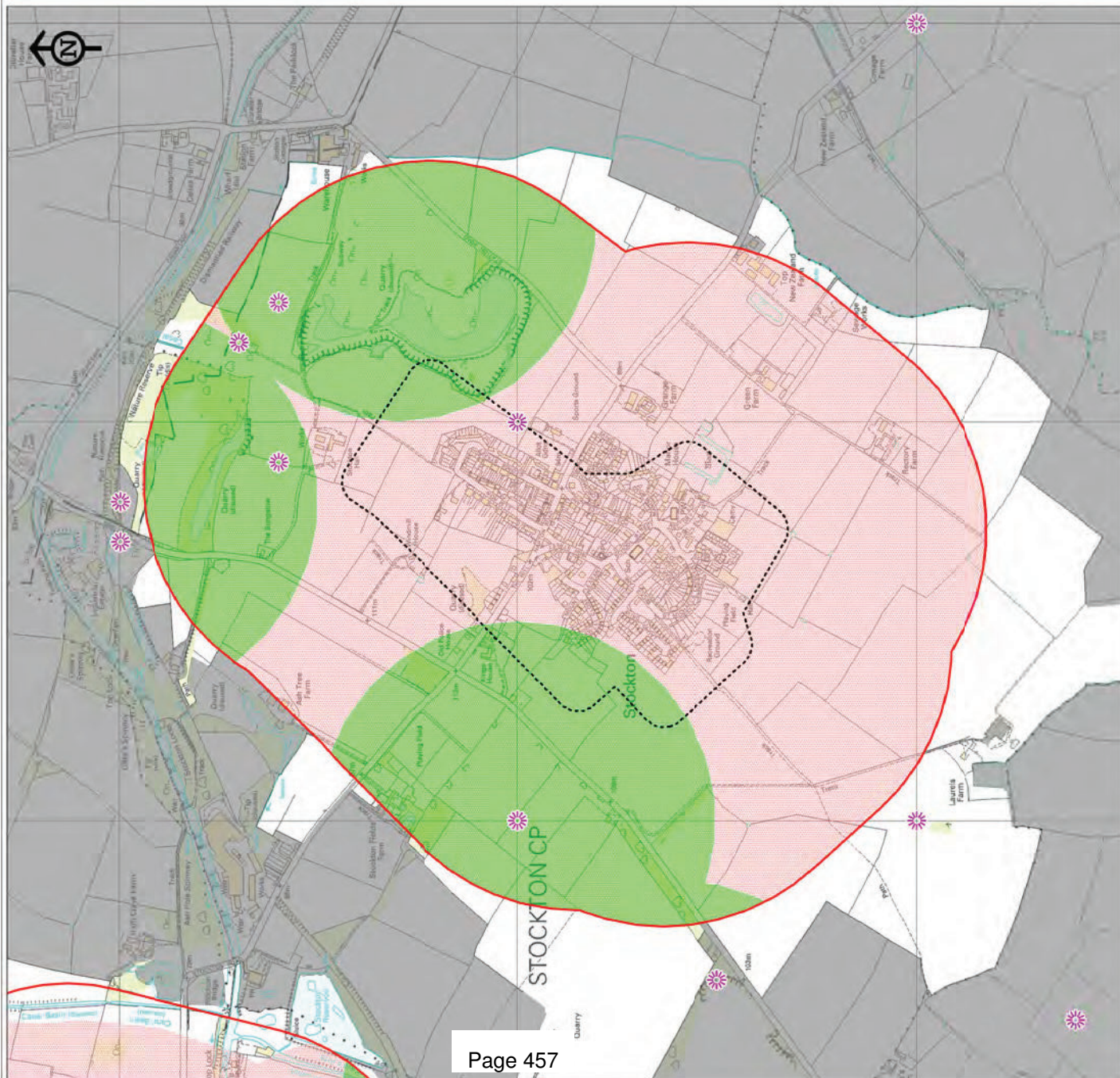


# STOCKTON





# STOCKTON

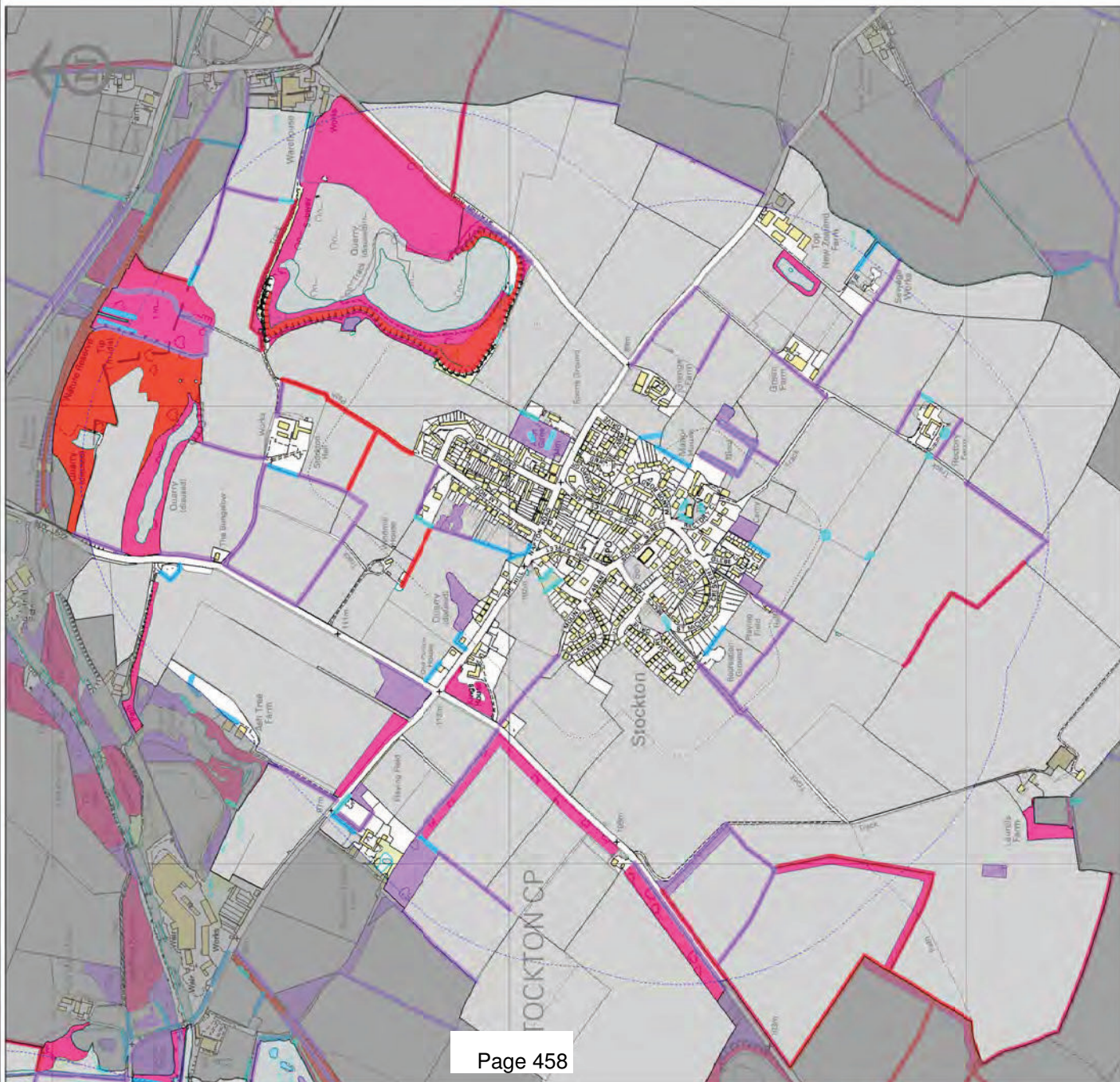


Warwickshire Biological Records Centre





# STOCKTON

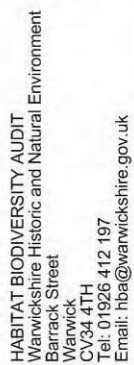


**Woodland 1km Connectivity**

HIGH: 2,000,000 to 20,000,000  
500,000 to 2,000,000  
100,000 to 500,000  
50,000 to 100,000  
LOW: 1 to 50,000  
NO CONNECTIVITY 0 to 0

**STUDY AREA** 500m buffer  
**OS DEVELOPED LAND USE AREA** Settlements



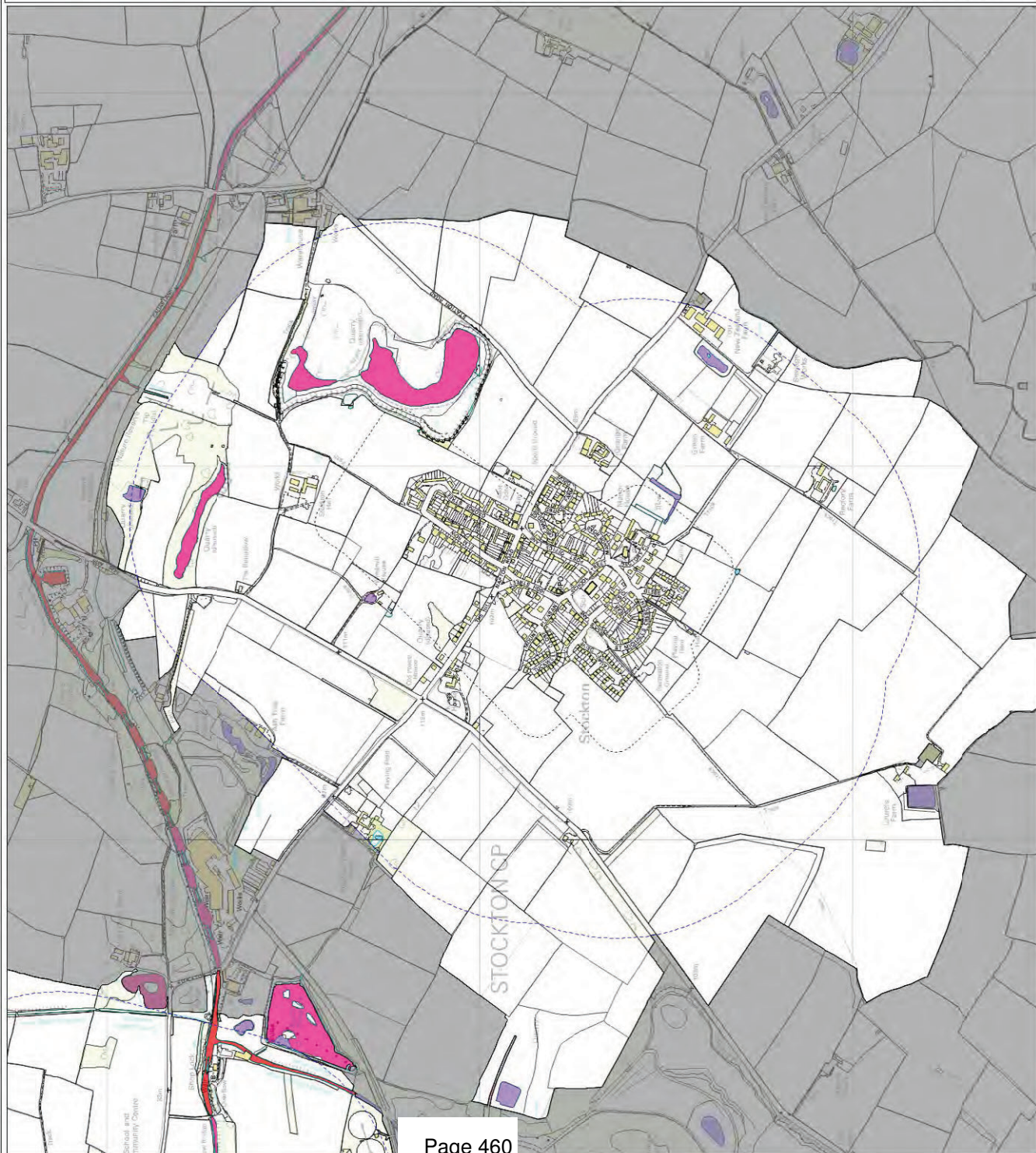


© Crown copyright, 2012. All rights reserved. Licence No. 100019520. Copyright of the data remains the property of the Habitat Biodiversity Audit for Warwickshire, Coventry and Solihull. While every effort has been made to ensure that the data is accurate in accordance with Phase 1 habitat survey standards the project cannot guarantee its accuracy or accept responsibility for any changes to land use or habitat that may have occurred since the survey was undertaken.

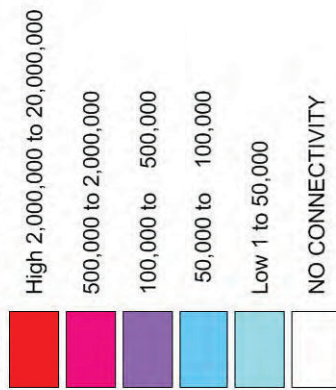




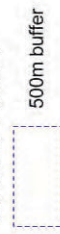
# STOCKTON



## Pond 1km Connectivity

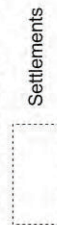


## STUDY AREA



500m buffer

## OS DEVELOPED LAND USE AREA



Settlements

© Crown copyright, 2012. All rights reserved. Licence No. 100019520. Copyright of the data remains the property of the Habitat Biodiversity Audit for Warwickshire, Coventry and Solihull. While every effort has been made to ensure that the data is accurate in accordance with phase 1 habitat survey standards the project cannot guarantee its accuracy or accept responsibility for any changes to land use or habitat that may have occurred since the survey was undertaken.

PRINTED 02/07/2012



## Stratford-on-Avon District Council

## Ecological and Geological Study of Local Service Villages

## Settlement Assessment: Tanworth-in-Arden

## Designated sites:

Status and Name	Area in hectares	Grid ref.	Description
<b>LWS potential site</b>			
SP16Li12r Railway	37.90	SP122696	Post-industrial site
SP17A2 Hedgerow	0.56	SP1167	Hedgerows
SP17A4 Hedgerow	1.95	SP1067	Hedgerows

## Key Target Notes

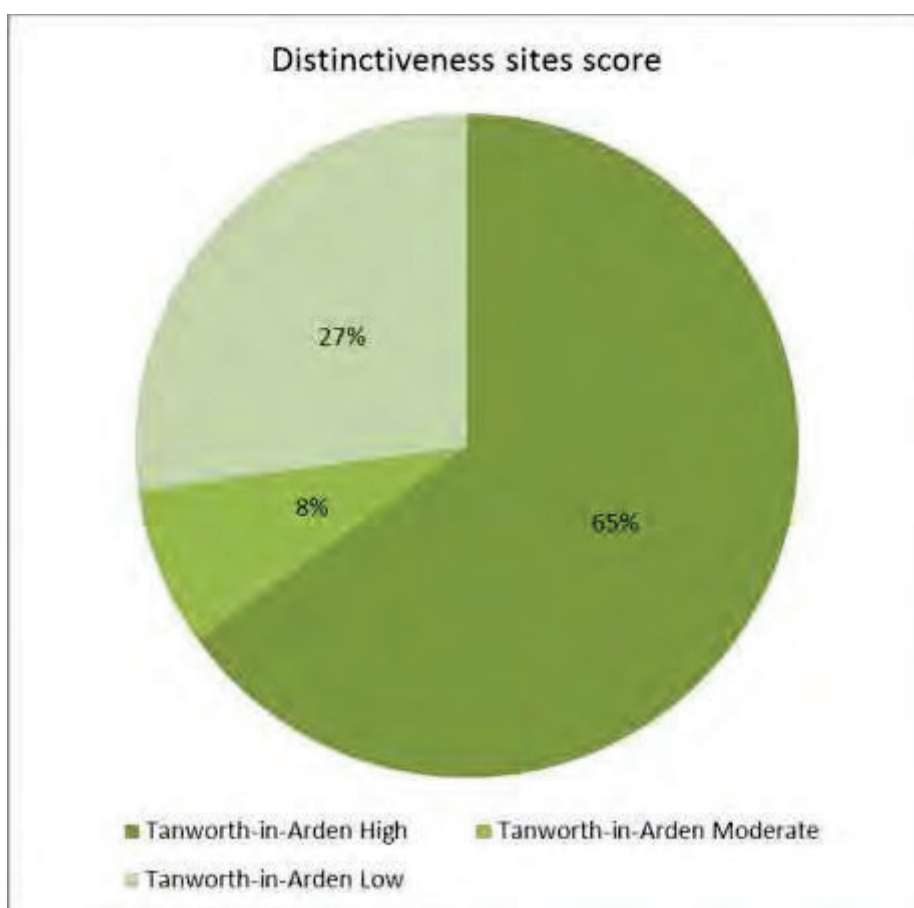
- SP16e13 – SP16e15 ; Ponds
- SP17a6 - Species rich hedgerow
- SP17a24 – Semi-improved grasslands
- SP17a12 – Oak woodland

## Habitat Description

The settlement has a large number of small sites of semi-natural broad-leaved woodland, semi-natural grassland and ponds throughout the area which gives it the largest percentage of distinctiveness of all three categories of distinctiveness.

Distinctiveness Phase 1 habitats	No. of sites	Area in hectares	Score
<b>High</b>			
A111 Broad-leaved semi-natural woodland	27	3.05	81
A5 Orchard (commercial)	1	0.37	3
B22 Semi-improved neutral grassland	13	7.17	39
B5 Marsh/marshy grassland	1	0.25	3
F1 Swamp	1	0.01	3
G1 Standing water	15	0.55	45
G2 Running water	26	0.77	78
<b>Sub Total</b>	<b>84</b>	<b>12.18</b>	<b>252</b>
<b>Moderate</b>			
A112 Broad-leaved plantation	5	1.51	10
A21 Dense/continuous scrub	5	0.59	10
B6 Semi-improved neutral grassland	4	2.20	8

J113 Set-aside	1	6.34	1
<b>Sub Total</b>	<b>15</b>	<b>10.65</b>	<b>29</b>
<b>Low</b>			
A122 Coniferous plantation	9	5.35	9
A132 Mixed plantation	1	0.23	1
B4 Improved grassland	53	158.52	53
C31 Tall ruderal	5	0.91	10
J11 Arable	7	23.04	7
J12 Amenity grassland	30	12.65	60
<b>Sub Total</b>	<b>105</b>	<b>200.69</b>	<b>140</b>
<b>Totals</b>	<b>204</b>	<b>223.52</b>	<b>421</b>



## Geological Description

Tanworth-in-Arden has considerable potential for its Triassic geology (principally Mercia Mudstone Group), and overlying Quaternary deposits. Any excavations into natural geology would be of potential interest for purposes of recording and/or museum collecting.



## **Protected Species**

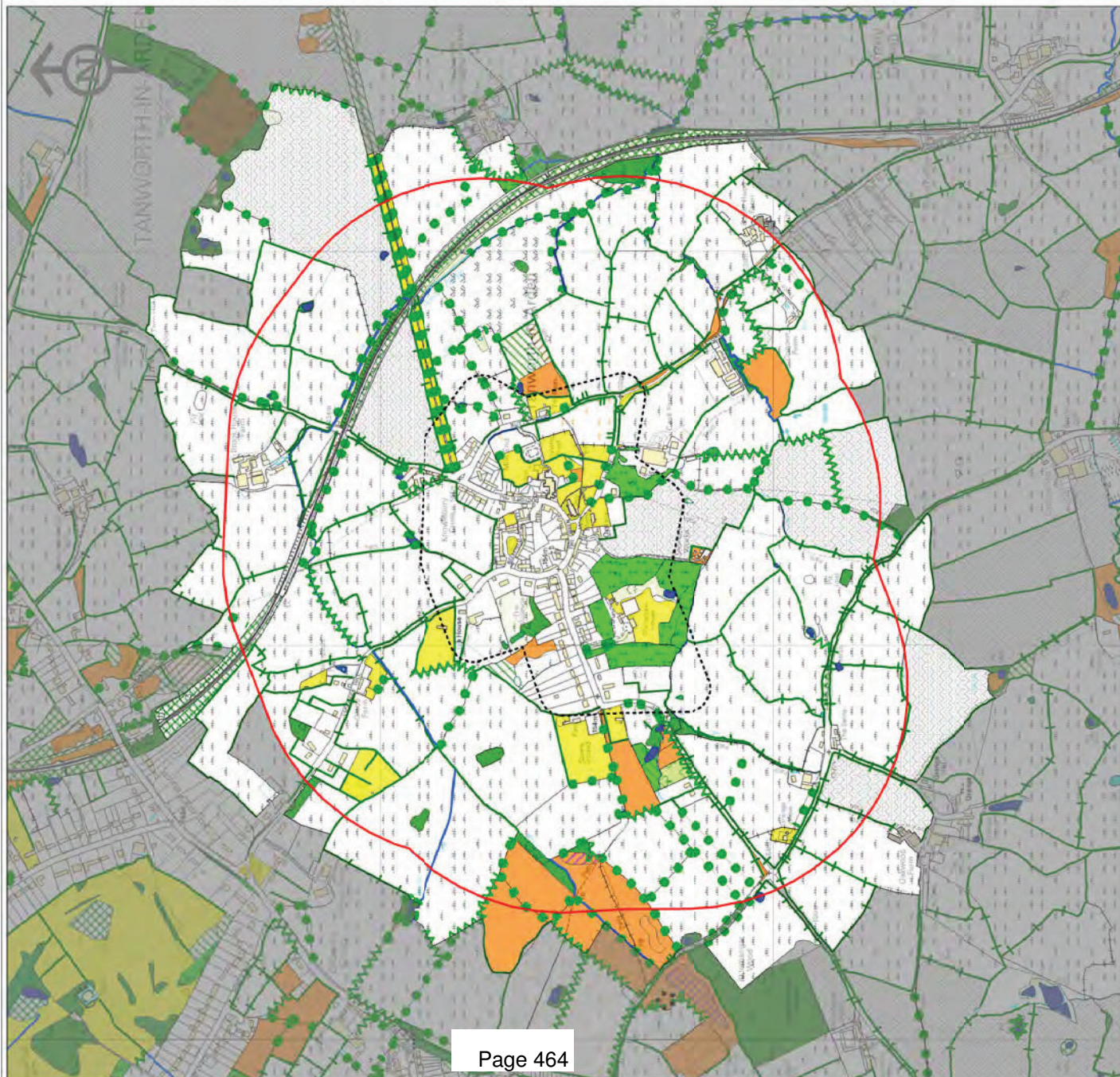
The bat species of common pipistrelle and an indeterminate bat species and badger have been recorded in the settlement area. In the wider area there are additional records of smooth newt, hedgehog with additional bat records of soprano pipistrelle, brown long-eared, noctule and serotine plus a butterfly records of small blue white-letter hairstreak and small heath. There are also rare plants including limestone fern, sherard's downy-rose and a hawkweed.

## **Recommendations for Further Survey**

- Meadows, woods and ponds adjoin the hedgerow potential local wildlife site



# TANWORTH-IN-ARDEN



## PHASE 1 HABITAT SURVEY

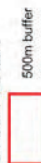
Habitat Types

A111 (Broad-leaved semi-natural woodland)	C32 (Non-ruderal)
A112 (Broad-leaved plantation)	D5 (Dry heath/acid grassland mosaic)
A121 (Coniferous semi-natural woodland)	E11 (Sphagnum Bog)
A122 (Coniferous plantation)	E21 (Acid/neutral flush)
A131 (Mixed semi-natural woodland)	E31 (Valley mire)
A132 (Mixed plantation)	E32 (Basin mire)
A21 (Dense/continuous scrub)	F1 (Swamp)
A22 (Scattered scrub)	F22 (Inundation vegetation)
A31 (Broad-leaved parkland/scattered trees)	G1 (Standing water)
A32 (Coniferous parkland/scattered trees)	G2 (Running water)
A4 (Recently felled woodland)	I21 (Quarry)
A5 (Orchard)	I22 (Spill)
B11 (Unimproved acidic grassland)	I23 (Mire)
B12 (Semi-improved acidic grassland)	I24 (Refuse tip)
B21 (Unimproved neutral grassland)	J11 (Arable)
B22 (Semi-improved neutral grassland)	J112 (Allotments)
B31 (Unimproved calcareous grassland)	J113 (Self-seed)
B32 (Semi-improved calcareous grassland)	J12 (Amenity grassland)
B4 (Improved grassland)	J13 (Ephemeral/short perennial)
B5 (Marsh/marshy grassland)	J14 (Introduced shrub)
B6 (Poor semi-improved grassland)	J36 (Buildings)
C11 (Continuous bracken)	J4 (Bare ground)
C31 (Tall ruderal)	

Linear Features

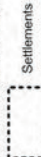
A21 (Linear Scrub)	J23 (Hedge with Trees)
A3 (Linear Trees)	J231 (Native Species Rich Hedge with Trees)
G1 (Standing Water)	J24 (Fence)
G2 (Running Water)	J25 (Wall)
I1 (Inland Cliff)	J26 (Dry Ditch)
J21 (Intact Hedge)	J27 (Boundary Removed)
J211 (Native Species Rich Intact Hedge)	J28 (Earth Bank)
J22 (Defunct Hedge)	

STUDY AREA



500m buffer

OS DEVELOPED LAND USE AREA



Settlements



# TANWORTH-IN-ARDEN

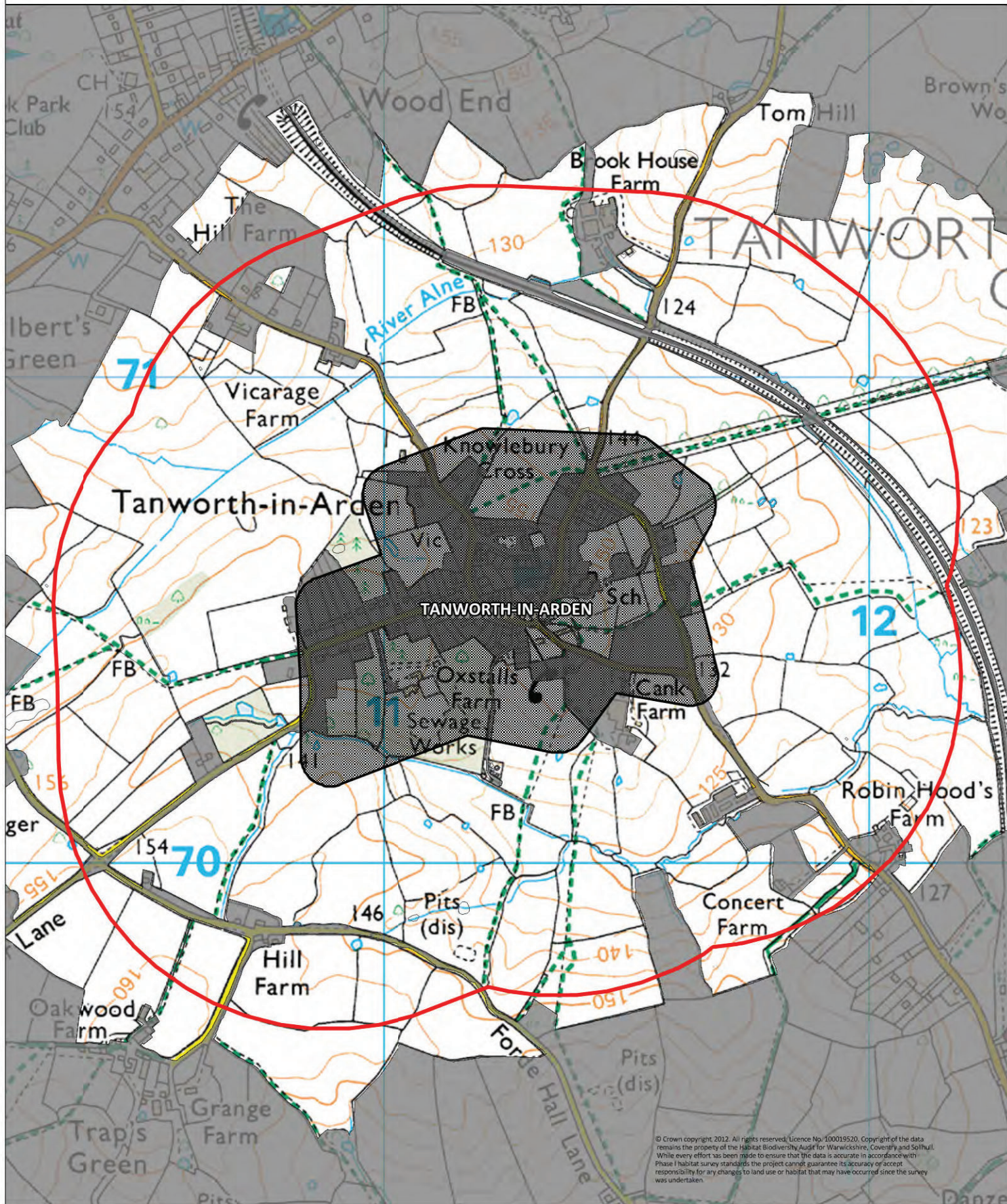






## TANWORTH-IN-ARDEN

PRINTED 09/02/2012



© Crown copyright 2012. All rights reserved. Licence No. 100019520. Copyright of the data remains the property of the Habitat Biodiversity Audit for Warwickshire, Coventry and Solihull. While every effort has been made to ensure that the data is accurate in accordance with Phase 1 habitat survey standards the project cannot guarantee its accuracy or accept responsibility for any changes to land use or habitat that may have occurred since the survey was undertaken.

2.7 SQKM

Settlements



Settlements

500m Buffer



500m Buffer



# Stratford-on-Avon District Council Ecological Villages Study

## Target Notes

### Tanworth-in-Arden

sp16e13	A small pond surrounded by holly and hawthorn, with <i>Juncus effusus</i> and <i>Glyceria fluitans</i> .
sp16e14	A small shaded pond surrounded by holly and hawthorn with no aquatic vegetation present.
sp16e15	A steep sided pond with hawthorn to the north and west, open to the south and east but fenced off from cattle. <i>Juncus</i> and <i>Glyceria</i> spp. and duckweed present.
SP16E29	Bees nest in an oak tree.
SP16E30	Area of scrub/young woodland with abundant dogs mercury, ground ivy, bluebell and lesser celandine.
sp17a12	Oak woodland with ash; field maple; hazel; elder; hawthorn; holly and yew. The ground flora is dominated by ivy on dry banks with dog's mercury; <i>Bromus ramosus</i> ; <i>Brachypodium sylvaticum</i> ; locally frequent <i>Polystichum aculeatum</i> occurs along the ditch; with hedge woundwort and wood avens. The low; wet; part water filled hollows contain alder and ground flora with abundant golden saxifrage; hedge woundwort and nettle.
sp17a13	Hazel hedge and ditch along roadside containing mature oak; yew; holly; elder and a ground flora of locally dominant ivy; <i>Melica uniflora</i> ; <i>Dryopteris filix-mas</i> ; red campion and nettle.
sp17a14	Semi-improved grassland over ridge and furrow containing abundant <i>Holcus lanatus</i> ; <i>Dactylis glomerata</i> ; <i>Festuca rubra</i> ; <i>Agrostis capillaris</i> with frequent lesser knapweed; lesser stitchwort; ribwort plantain and barren strawberry.
sp17a20	Semi-improved grassland dominated by <i>Cynosurus cristatus</i> with abundant <i>Agrostis capillaris</i> ; <i>Holcus lanatus</i> ; <i>Festuca rubra</i> and <i>Deschampsia cespitosa</i> with frequent sorrel; creeping cinquefoil; lesser knapweed; ladies bedstraw; marsh thistle; yarrow; devil's-bit scabious; pepper saxifrage; great burnet; ribwort plantain; meadow vetchling; yarrow and selfheal. UPDATED 11/04/2012 by OP. As described, heavily horse grazed in places, too early in the year to ID all species. Also found cuckoo flower and great burnet.
sp17a21	Dense alder coppice woodland.
SP17A23	Marshy corner of field with rushes and cuckooflower.
SP17A24	Semi-improved grassland with rough grasses. Tufted vetch, meadow foxtail, common chicken weed, wood anemone and creeping buttercup.
SP17A25	Species rich hedgerow with trees including oak, hawthorn, ash, hazel, and holly. At the base is abundant dogs mercury, cleavers, hedge mustard and bluebell.
SP17A27	Improved grassland with ridge and furrow.
sp17a4	Church yard which although mown may be allowed to flower during the summer. Contains abundant <i>Cynosurus cristatus</i> ; <i>Agrostis capillaris</i> ; <i>Poa pratensis</i> with locally abundant cat's ear; creeping buttercup; daisy; some barren strawberry; bush; red clover; germander speedwell; ribwort plantain; yarrow; selfheal and a field layer dominated by <i>Rhytidadelphus squarrosus</i> . The trees within the church-yard include yew; wellingtonia; cypress; lime and oak. UPDATED 11/04/2012 by OP. Churchyard mostly closely mown at time of visit.
sp17a5	Semi-improved grassland on an east facing slope contains abundant <i>Holcus lanatus</i> ; <i>Festuca rubra</i> ; <i>Cynosurus cristatus</i> and some <i>Phleum pratense</i> .
sp17a6	Species rich roadside hedge with elm; hazel; holly; elder; sycamore; dog rose; field maple; hawthorn and bramble. The ground flora includes dog's mercury; hedge woundwort; <i>Dryopteris dilatata</i> ; red campion; <i>Polystichum aculeatum</i> and <i>Bromus ramosus</i> .



sp17a7	Neglected Semi-improved grassland dominated by <i>Dactylis glomerata</i> ; <i>Arrhenatherum elatius</i> ; <i>Holcus lanatus</i> with <i>Agrostis capillaris</i> ; <i>Festuca rubra</i> ; sorrel; creeping and meadow buttercup; cow parsley; ribwort plantain; lesser knapweed; yarrow and meadow vetchling. Part of the area has recently been planted with broadleaf trees. Includes stands of evening primrose and a large pool containing white water-lily; rigid hornwort; amphibious bistort; yellow iris; <i>Juncus effusus</i> and is populated by goldfish. UPDATED 11/04/2012 by OP. Rough semi-improved grassland containing lesser celandine, cuckoo flower at time of visit.
sp17a8	Horse grazed semi-improved grassland dissected by access road. Contains abundant <i>Cynosurus cristatus</i> ; <i>Holcus lanatus</i> ; <i>Agrostis capillaris</i> ; creeping buttercup; ribwort plantain with locally abundant red clover; meadow buttercup; selfheal; sorrel; cat's ear and autumn hawkbit.



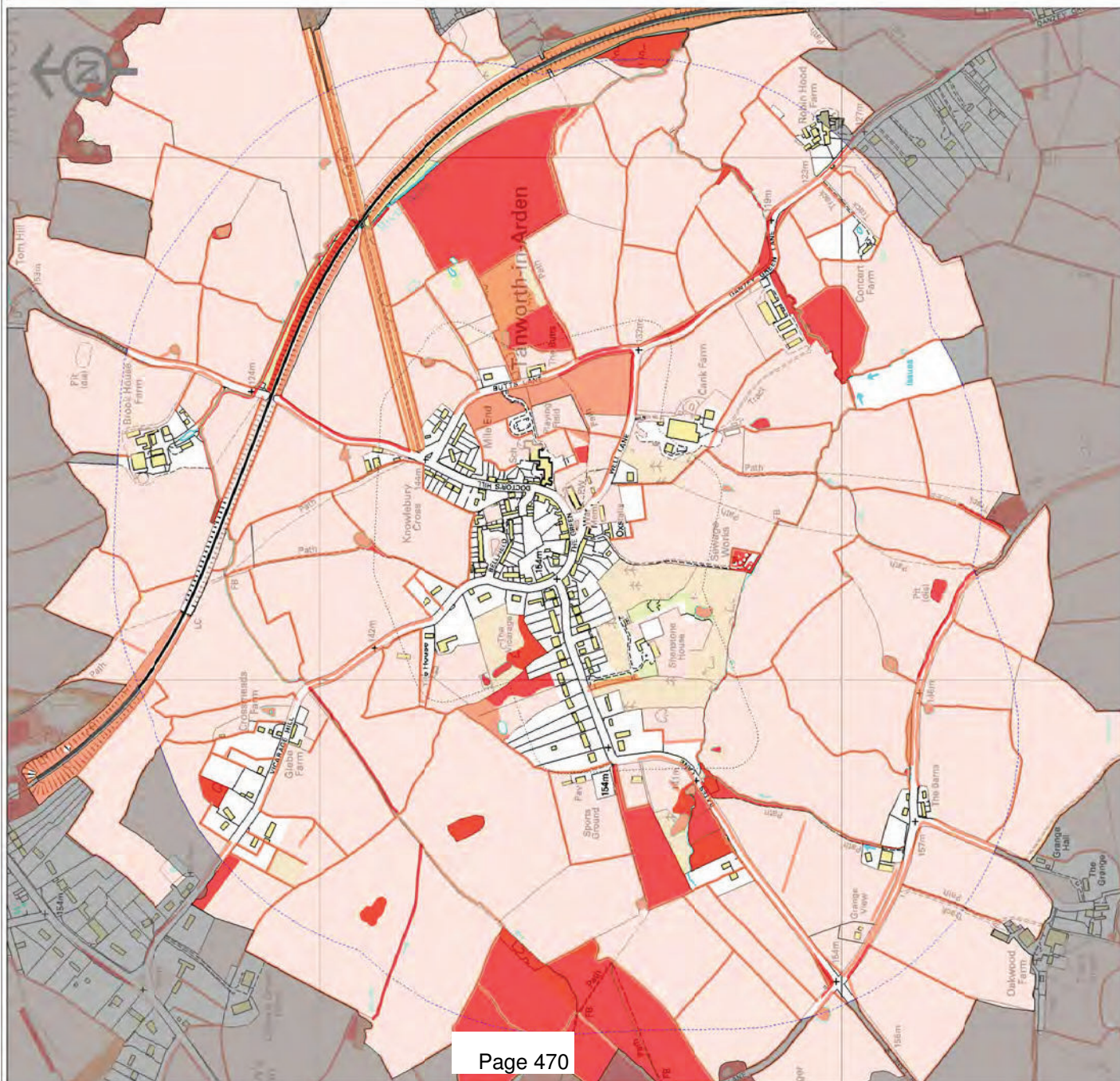


# TANWORTH-IN-ARDEN





## TANWORTH-IN-ARDEN



### Settlement Distinctiveness

3: HIGH  
2: MODERATE  
1: LOW

OS DEVELOPED LAND USE AREA

STUDY AREA

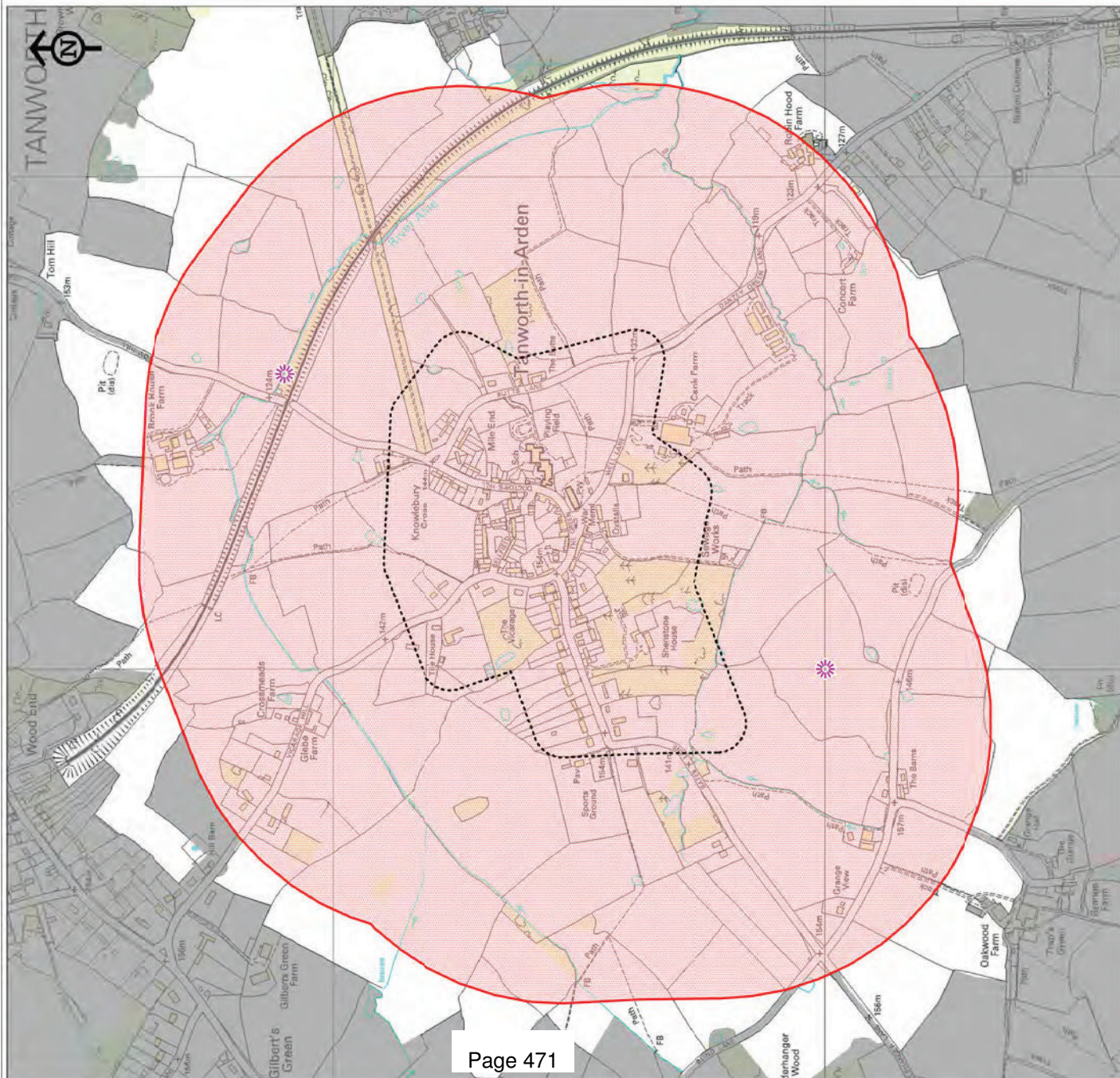
## Settlements

500m buffer

© Crown copyright, 2012. All rights reserved. Licence No. 100019520. Copyright of the data remains the property of the Habitat Biodiversity Audit for Warwickshire, Coventry and Solihull. While every effort has been made to ensure that the data is accurate in accordance with Phase 1 habitat survey standards the project cannot guarantee its accuracy or accept responsibility for any changes to land use or habitat that may have occurred since the survey was undertaken.



# TANWORTH-IN-ARDEN



## Species

- Buffer zone for water vole or white-clawed crayfish
- Buffer zone for protected amphibians and reptiles
- Buffer zone for bat
- Black Poplar
- Veteran tree
- County rare plant

## Warwickshire Biological Records Centre



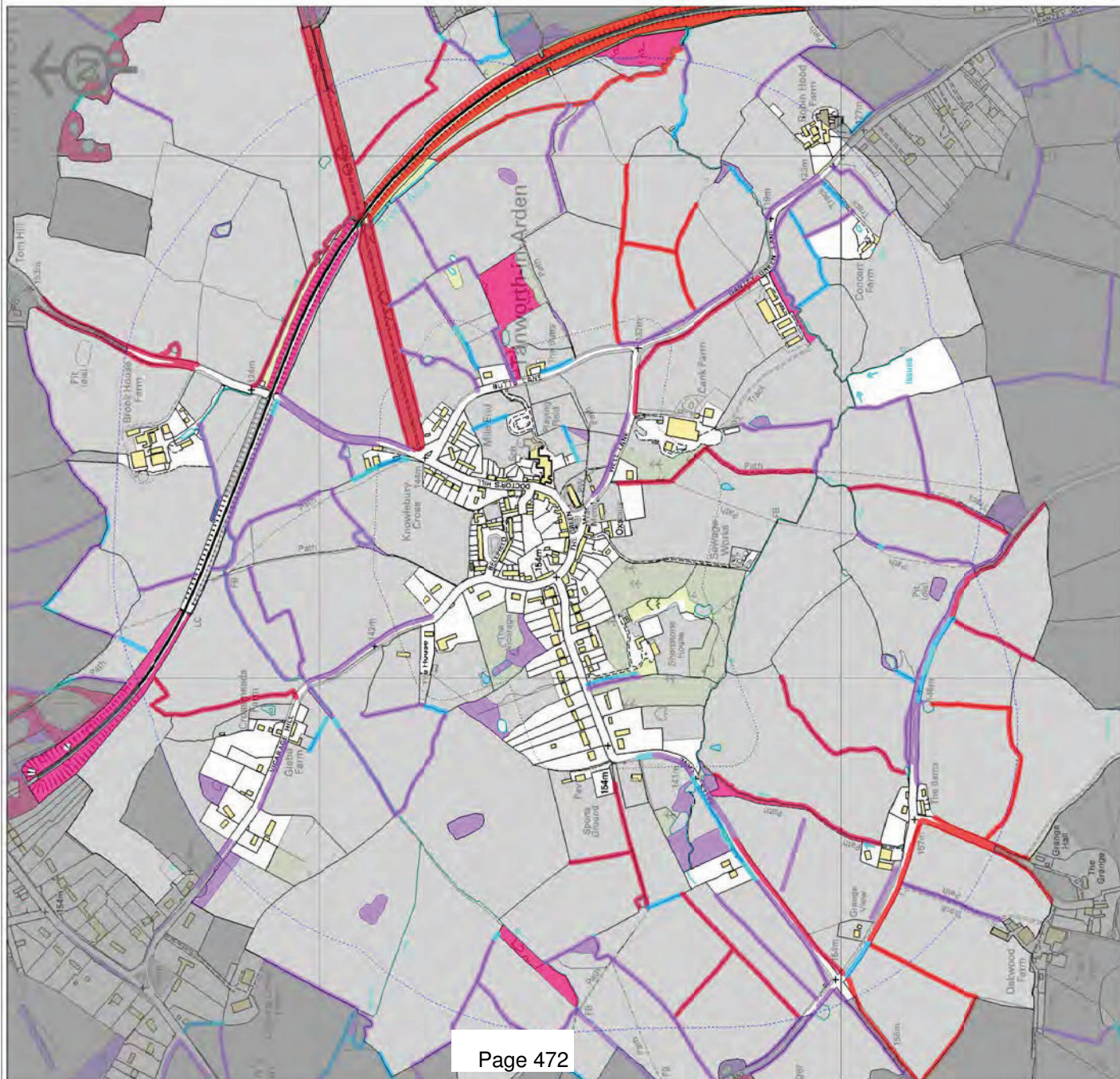
- STUDY AREA
- OS DEVELOPED LAND USE AREA
- 500m buffer
- Settlements

© Crown Copyright and database right 2012. Ordnance Survey 100018530. Copyright of the data remains the property of the Ordnance Survey. The data is accurate in accordance with Phase 1 habitat survey standards the project cannot guarantee its accuracy or accept responsibility for any changes to land use or habitat that may have occurred since the survey was undertaken.

PRINTED 04/07/2012



# TANWORTH-IN-ARDEN



**Woodland 1km Connectivity**

HIGH: 2,000,000 to 20,000,000  
500,000 to 2,000,000  
100,000 to 500,000  
50,000 to 100,000  
LOW: 1 to 50,000  
NO CONNECTIVITY 0 to 0

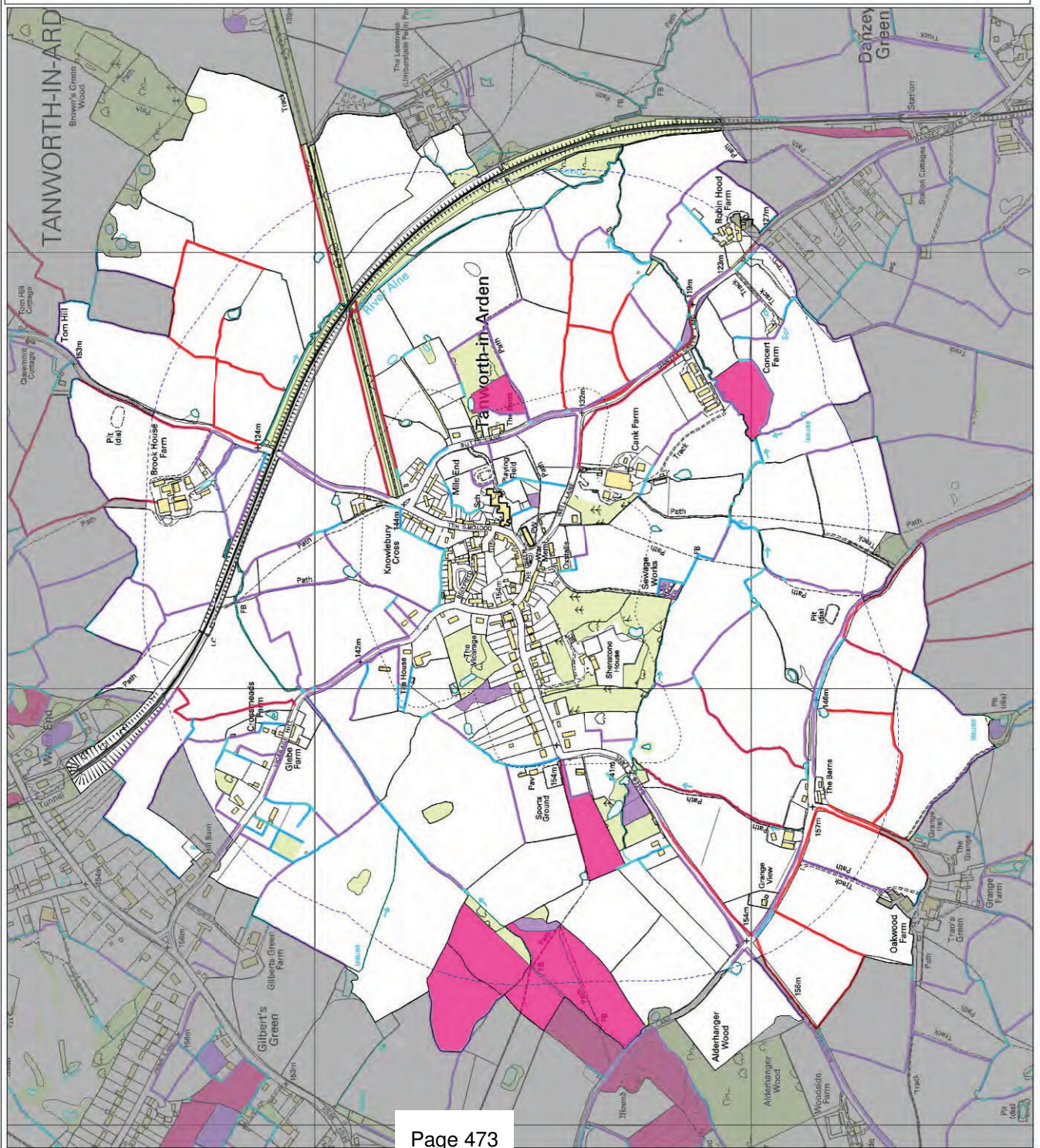
**STUDY AREA**  
500m buffer

**OS DEVELOPED LAND USE AREA**  
Settlements





# TANWORTH IN ARDEN



## Grassland 1km Connectivity



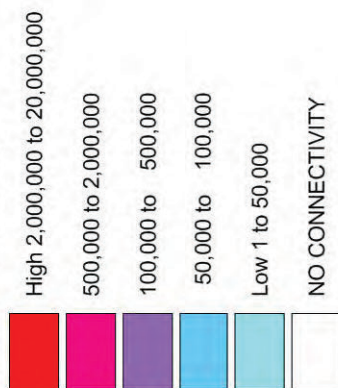




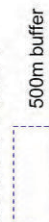
# TANWORTH IN ARDEN



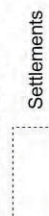
## Pond 1km Connectivity



## STUDY AREA



## OS DEVELOPED LAND USE AREA



© Crown copyright, 2012. All rights reserved. Licence No. 100019520. Copyright of the data remains the property of the Habitat Biodiversity Audit for Warwickshire, Coventry and Solihull. While every effort has been made to ensure that the data is accurate in accordance with phase 1 habitat survey standards the project cannot guarantee its accuracy or accept responsibility for any changes to land use or habitat that may have occurred since the survey was undertaken.

PRINTED 02/07/2012