

canopies. 1st floor has C20 wooden-mullioned-and-transomed oriels with flanking original small 2-light windows. 2nd floor has 4-light projecting windows; 4-light hipped dormer window; all windows have leaded glazing. Close-studded framing with mid rails. 1920s timber bracketed sign board. Rear has gabled wing with rainwater head and cross-axial stack with separate diagonal shafts; single-storey and attic wing.

Interior: broadly chamfered beams and exposed timber framing, close studded to left return; open-well stair with cut string and enriched tread ends, and column-on-vase balusters; dado panelling; rear room has corner cupboard with fluted pilasters, 6-fielded-panel door, simplified shell vault and shaped shelves. 1st floor has some C17 panelling and stone chimney breast with bressumer.

Originally formed one house with No 21 (q.v.) and had 2 gables.

(Bearman R: *Stratford-upon-Avon: a history of its streets and buildings*: Nelson: 1988-: 40; *History of the Streets of Stratford-upon-Avon*: Bearman R and evening class members: *High Street*: 1971-1974).

21 High Street

Dennis Marks (photo opposite, right)
(Ref No. 120 - Grade II)

List description : Town house, now shop/dwelling. c1600, before 1615; 1920s restoration. Timber frame with plaster infill on rubble plinth; tile roof with rear brick stack with 4 clustered separate diagonal shafts. 3 storeys plus attic; symmetrical 4-window range. 1st and 2nd floors are jettied on consoles and joist ends; 2 gables. Early C20 shop front with small-paned upper glazing and glazing flanking recessed entrance; entry to left has studded wide-board door. 1st and 2nd floors have windows with sills and 12-pane sashes, probably mid C18. Attic has small 3-light ovolo-mullioned windows. Close-studded framing with mid rails. Right return has exposed framing. Rear has gabled wing with cross-axial stack with clustered separate diamond shafts; single-storey wing.

Interior: broadly chamfered beams; noted as having early C17 doors, panelling etc. The building originally formed one house with Nos 18 and 19 (q.v.).

(Bearman R: *Stratford upon-Avon: a history of its streets and buildings*: Nelson: 1988-: 40; *History of the Streets of Stratford-upon-Avon*: Bearman R and evening class members: *High Street*: 1971-1974).



23 and 24 High Street
Tudor House

(Ref No. 121 - Grade II*)

List description : Town house now shop. 1595-1596; restored 1903. Timber frame with plaster infill; hipped tile roof with brick end stacks. 3 storeys; 3-window range. 1st and 2nd storeys jettied on consoles. Early C20 shop fronts with segmental-headed plate glass windows and recessed entrances. 1st floor has C20 wooden-mullioned-and-transomed windows, 2 of 4 lights, and one cross-mullioned; 2nd floor has 2-light windows; all with leaded glazing. The corner-post remains and is carved with a human mask etc, 2 enriched consoles; 1st floor has close studding below herring-bone framing; corner console to angle has 2 crouched figures; attic has traces of 3 gables, levelled and infilled to form straight eaves, ogival braces. Left return similar; rear wing has cross-axial stack with 4 clustered diagonal shafts.

Interior: plaque records restoration at the expense of the novelist Marie Corelli.

(Bearman R: *Stratford-upon-Avon: a history of its streets and buildings*: Nelson: 1988-: 40; *History of the Streets of Stratford-upon-Avon*: Bearman R and evening class members: *High Street*: 1971-1974).

25 High Street

Garrick Inn (photo overleaf, left; also page 84)
(Ref No. 122 - Grade II*)

List description : Public house. c1596; facade heavily restored c1912, replacing c1800 brick front. Timber frame with plaster infill; tile roof with rear brick stacks. 3 storeys; symmetrical 2-window range. 1st and 2nd floors jettied on brackets, moulded bressumer to 2nd floor; two C20 gables to attic with enriched bargeboards. Entrance to left end has stained glass overlight to plank door. Ground and 1st floors have 3-light wooden-mullioned-and-transomed windows, those to ground floor with continuous row of small square lights above; attic has 2-light windows; all with leaded glazing. Upper



floors have square framing with concave-sided diamonds. Early C20 bracketed timber sign board. Rear wing with cross-axial stack.

Interior: exposed timber framing and beams. Said to have been the place where the plague of 1564 started and to have been an inn from 1718; name changed from the Greyhound to the Garrick in 1795, in honour of David Garrick who did much for the town's tourist trade by his encouragement of enthusiasm for Shakespeare.

(Bearman R: *Stratford-upon-Avon: a history of its streets and buildings*: Nelson: 1988-: 40; Fogg N: *Stratford-upon-Avon: Portrait of a Town*: Chichester: 1986-: 16, 100; Forrest H E: *The Old Houses of Stratford-upon-Avon*: London: 1925-: 72).

26 High Street

Harvard House (photo above, right; and page 84)
(Ref No. 123 - Grade I)

List description: House. C15; front, dated 1596, largely rebuilt after fire of 1595, when rear extended; C18 and C19 rear additions; restored 1905-9, for Marie Corelli and Everard Morris, and 1980s; being extensively restored April 1991. Timber frame with plaster infill on rubble plinth; tile roof with rear brick stacks. Right-angle plan. 2 storeys with attic; single-window range. 1st and 2nd storeys are jettied on consoles; gable with enriched bargeboards. Entrance to right has Tudor-headed wide-board studded door

with strap hinges and 6-pointed handle plate. 5-light wooden ovolo-mullioned-and-transomed windows with leaded glazing; that to ground floor with enriched sill, that to 1st floor is consoled oriel, that to 2nd floor is bracketed oriel with lean-to roof. Timber framing is enriched with a great variety of carved decoration: ground floor has consoles with figures; 1st floor has enriched timber framing bressumer and consoles, fleurs-de-lys flank lettering: TR: AR: 1596 (Thomas and Ann Rogers); 2nd floor similar, enriched bressumer, masks to window brackets and some decorative framing over window. The plaster panels were sunk and carved with various patterns in 1972. Stack has 2 shafts with triangular fillets. Narrow left return has enriched rainwater gear. Rear has 2-storey gabled wing with single-storey range and 2-storey cross-range; timber frame with brick infill; 2-light windows. Cross wing has segmental-headed entrance with heavy frame to door and segmental-headed entry with gate; later entrance and window; rear has some square framing.

Interior: rubble cellar with winding stair and C20 joists on girder. Ground floor, much altered, has exposed beams, mid C17 dog-leg stair with square newels, moulded balusters and handrail. 1st floor has front room with late C16 panelling with fluted frieze, 6-panel door; fireplace has elliptical brick arch and plaster overmantle with

3 shields, in scrolly frame, with fleur-de-lys, lion rampant reversed and rose (c.f. work in No 6 Wood St (q.v.) and Packwood House); chamfered beam and stop-chamfered joists. Room behind has doorway with slightly ogee head and 2 rear doorways with 4-centred heads; panel of ex-situ stained glass quarries with flowers. 2nd floor front room has some square panelling and plastered wall with remains of red-lined pattern imitating panelling; fireplace and renewed roof truss; wide-board door; 3 gabled valley dormers to left return. Formerly the home of Catherine Rogers, mother of John Harvard, the founder of Harvard University USA. It was restored by the novelist Marie Corelli the work financed by Everal Morris of Chicago, and presented to Harvard University for use by students and visiting Americans.

(*Buildings of England*: Pevsner N: *Warwickshire*: Harmondsworth: 1966-: 418; Bearman R: *Stratford-upon-Avon: a history of its streets and buildings*: Nelson: 1988-: 39-40; *Victoria County History* (offprint): Styles P: *The Borough of Stratford-upon-Avon and the Parish of Alveston*: London: 1946-: 10; Forrest HE: *The Old Houses of Stratford-upon-Avon*: London: 1925-: 73-5).

27 and 28 High Street (photo page 84) (Ref No. 124 - Grade II)

List description : Town house, now shop. c1800 front to earlier building, probably c1600, with earlier rear range surviving 1595 fire. Brick and timber frame with stucco cladding; tile roof hipped to one end and large brick stack to rear of ridge. 3 storeys with attic; 3-window range. Plain eaves. C20 shop front. Upper floors have windows with sills and sashes with wood architraves; 12-pane sashes to 1st floor, 6-pane sashes and one 2-light leaded casement; attic has 2 gabled dormers with 2-light leaded glazing. Rear has 2 gables and bow window to right of 2-storey wing with wall posts to ground floor and jettied 1st floor on flat joists; roughcast 1st floor with rafter ends visible. The building was originally part of the property of Thomas Rogers of Harvard House, with the range to rear of Nos 59 and 60 Ely Street (q.v.).

(Bearman R: *Stratford-upon-Avon: a history of its streets and buildings*: Nelson: 1988-: 40).

29 High Street (photo page 84) (Ref No. 125 - Grade II)

List description : Town house, new shop/dwellings. c1600 with front rebuilt c1900 replacing c1800 front. Timber frame with plaster infill and brick; tile roof with brick end stack. 2 storeys; symmetrical 2-window range. Attic jettied, with 2 gables. C20 shop front with side

entrance to left end. 1st floor has wooden ovolo-mullioned-and-transomed oriels; similar projecting cross-mullioned windows to attic; all with leaded glazing. Square framing with ovolo-moulded members. Large mid to late C19 brick rear wing (Mercer's Croft) with casement windows.

(Bearman R: *Stratford-upon-Avon: a history of its streets and buildings*: Nelson: 1988-: 40).



30 High Street

Dixons (photo above, left; also page 84)
(Ref No. 126 - Grade II*)

List description : Town house, now shop. c1600 with later alterations; restored 1918. Timber frame with plaster infill; ?slate roof with brick end stacks. 3 storeys; symmetrical 2-window range. 1st and 2nd floor are jettied, the 2nd floor with 2 gables, truncated and infilled to form full storey. C20 shop front. 1st floor has 4-light wooden ovolo-mullioned-and-transomed oriels; small 2-light window to right of centre; 2nd floor has 2 projecting 2-light windows; all have leaded glazing. 1st floor has close studding below herring-bone bracing; 2nd floor has bressumers carved with snaky monsters, curved braces to gables and thin scantlings to infill.

Interior: some broadly chamfered beams to front of ground floor; 1st floor has some timber framing to returns. The property of Richard Quiney (cf No 1 High Street), a contemporary of Shakespeare, and author of the only remaining letter written to him.

(Bearman R: *Stratford-upon-Avon: a history of its streets and buildings*: Nelson: 1988-: 40; Forrest H E: *The Old Houses of Stratford-upon-Avon*: London: 1925-: 77-8; *History of the Streets of Stratford-upon-Avon*: Bearman R and evening class members: *High Street*: 1971-1974).

31 High Street

Fosters (photo above, right; also page 84)
(Ref No. 127 - Grade II)

List description : Town house, now shop/dwelling. c1600 with early C19 facing. Timber

frame with stucco cladding; slate roof. 3 storeys; symmetrical 2-window range. C20 shop front. 1st floor has C19 canted oriels with 2:4:2-pane homed sashes; 2nd floor has C18 windows with 18-pane horizontally sliding sashes. C19 rear wing.

Interior: former passageway has an original oak-framed doorway and a curved bracket to formerly jettied 2nd floor; 2nd floor recorded as having hidden passage round chimney.

(Bearman R: *Stratford-upon-Avon: a history of its streets and buildings*: Nelson: 1988-: 40; *Victoria County History* (offprint): Styles P: *The Borough of Stratford-upon-Avon and the Parish of Alveston*: London: 1946-: 9).



36 High Street

Hong Kong Chinese Restaurant
(Ref No. 128 - Grade II)

List description : Town house, now restaurant/dwelling. c1600 refronted in 1729 or 1758. Timber frame with brick front; parapeted roof with brick end stacks. Georgian style. 3 storeys; 2-window range. Deep panelled parapet with ashlar coping. C20 shop front. Upper floors have windows with sills, and rubbed brick flat arches over 12-pane sashes. Rear recorded as having 2 gables and exposed timber framing.

Interior: recorded as having close-studded framing; good stone fireplace with 4-centred arch and moulded jambs; two 1st floor rooms with late C16 panelling, frieze panels of early C18.

(*Victoria County History* (offprint): Styles P: *The Borough of Stratford-upon-Avon and the Parish of Alveston*: London: 1946-: 9; *History of the Streets of Stratford-upon-Avon*: Bearman R and evening class members: *High Street*: 1971-1974).



39 and 39A High Street

(photo above, left and centre)

(Ref No. 129 - Grade II)

List description : Town house, now 2 shops. Early C19 refronting of earlier, probably 1770s building. Stucco, probably to timber frame; steeply pitched renewed-tile roof with brick end stacks. Georgian style. 3 storeys; 4-window range. Modillioned timber cornice. C20 shop front, and part of shop front to left. Upper floors have windows with sills and 12-pane sashes, those to left half homed. Left return has bargeboards and finial.

(Bearman R: *Stratford-upon-Avon: a history of its streets and buildings*: Nelson: 1988-: 41; *History of the Streets of Stratford-upon-Avon*: Bearman R and evening class members: *High Street*: 1971-1974).

40 High Street (see 1 and 2 Wood Street)
(Ref No. 254 - Grade II)

Holtom Street



1 Holtom Street

(photo also page 43)

(Ref No. 130 - Grade II)

List description : House. 1858-9. Builder: William Holtom. Brick with buff headers and stucco dressings; slate roof with brick stop-chamfered end stacks. Georgian style. 2 storeys; 2-window range. Top brick cornice. Central entrance has doorcase with fluted pilasters and bracketed cornice, overlight to C20 half-glazed door; segmental-headed entry to left end has plank door. Windows have sills, and rusticated

wedge lintels with keys over 12-pane sashes, 9-pane sashes to 1st floor. Part of the early C19 development of the south part of Stratford.

(Information from Shakespeare Birthplace Trust Record Office).

2-7 Holtom Street (photo page 43)
(Ref No. 131 - Grade II)

List description : Terrace of 6 houses. 1858-9. Builder: William Holtom. Brick with buff headers and stucco dressings; slate roof with brick stop-chamfered end stacks and 2 cross-axial stacks. Georgian style. 2 storeys; symmetrical 6-window range of 3 pairs of houses. Top brick cornice. 3 pairs of entrances have doorcases; with pilasters and bracketed cornices, overlights to 4-flush-panel doors, but Nos 4 and 7 have C20 glazed doors; segmental-headed entries with plank doors flank central pair of houses. Windows have sills, and rusticated wedge lintels with keys over 12-pane sashes, 16-pane sashes to 1st floor, but Nos 2 and 3 have 16-pane sashes to all windows. Part of the early C19 development of the south part of Stratford.

(Information from Shakespeare Birthplace Trust Record Office).

John Street

1 John Street (see 16 Guild Street)
(Ref No. 96 - Grade II)

2, 3 and 4 John Street (photo pages 31 and 32)
(Ref No. 132 - Grade II)

List description : Terrace of 3 town houses. 1828; No 2 added in 1851. Brick with buff headers; slate roof with brick end stack and 2 cross-axial stacks. Georgian style. 3 storeys; 4-window range. Top modillioned brick cornice. Entrances, to right of windows, have doorcases with fluted pilasters and consoled cornices, overlights to 6-fielded-panel doors, but No 2 has panelled pilasters and 4-flush-panel door, and segmental-headed entry with plank door to right. Windows have sills, and rubbed brick cambered arches over 12-pane sashes, 6-pane sashes to 2nd floor; No 2 has windows over entrance, No 4 has horned sashes.

(Information from Shakespeare Birthplace Trust Record Office).

5 and 6 John Street

Payton Hotel (6) (photo pages 31 and 32)
(Ref No. 133 - Grade II)

List description : Two town houses, one now hotel. c1820. Painted brick with stucco dressings; hipped slate roof with brick ridge end and cross-axial stacks. Georgian style. 3 storeys; 4-window range. Plain eaves soffit. Entrances to centre have pilasters and margin

lights to overlights, that to No 5 has frieze and consoled cornice over C20 six-fielded-panel door, that to No 6 has moulded pilasters and consoled pediment over C20 half-glazed door. Windows have sills, and rusticated wedge lintels with keys, 4-pane sashes to ground floor, 12-pane sashes to 1st floor, 6-pane sashes to 2nd floor. Single-window right return to Payton Street with lower wing. Rear has 2 gabled wings and lean-to outshut. Part of the early C19 development of the northern part of Stratford, called New Town.

(Information from Shakespeare Birthplace Trust Record Office).

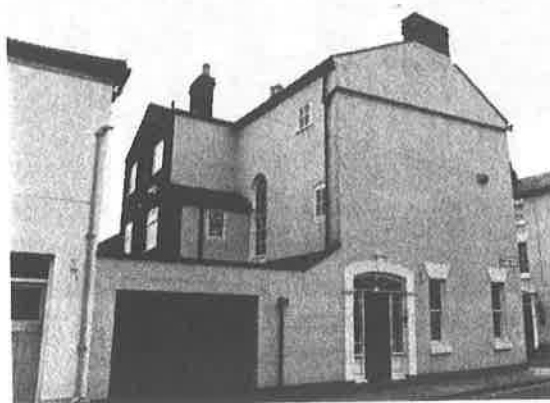


7 John Street
(Ref No. 134 - Grade II)

List description :

Includes: No 22 Payton Street.

Two town houses, one now office/dwelling. Brick with buff headers, part painted; slate roof with brick end stacks and cross-axial stack. Georgian style. 3 storeys; 4-window range. Top modillioned brick cornice. No 7 has central round-headed entrance with reeded pilasters and fluted brackets to open pediment, fanlight with wrought iron grille over half-glazed door. Windows have sills, and rubbed brick flat arches, over plate glass horned sashes to ground floor, 3 windows to No 22, 12-pane sashes to 1st floor



and 6-pane sashes to 2nd floor. Left return has segmental-headed entrance with plain surround, overlight and side lights to fielded-panel door. Rear has gabled wing and flanking round-headed stair windows with sashes. Part of the early C19

development of the northern part of Stratford, called New Town.

(Information from Shakespeare Birthplace Trust Record Office).



9 John Street
(Ref No. 135 - Grade II)

List description : Town house. 1820s. Brick; slate roof with brick end stacks. Georgian style. 3 storeys; 2-window range. Plain eaves. Round-headed entrance has moulded pilasters and consoled open pediment, fanlight with radial glazing bars over 3-panel door. Windows have sills, and rubbed and painted brick flat arches over 16-pane sashes, 8-pane sashes to 2nd floor. John Street is part of the early C19 development of the northern part of Stratford, known as New Town.

(Bearman R: *Stratford-upon-Avon: a history of its streets and buildings*: Nelson: 1988-: 64-5).



11 and 12 John Street
(Ref No. 136 - Grade II)

List description : Pair of houses. c1830. Brick with buff headers; slate roof with brick end stacks. Georgian style. 3 storeys; symmetrical 3-window range. Top brick cornice. Paired

entrances have doorcase with fluted pilasters with Greek-key capitals, frieze and bracketed cornice to 6-flush-panel doors, one with 2 glazed panels. Segmental-headed windows have sills, and 16-pane sashes, 8-pane sashes to 2nd floor; blind central windows with painted sashes. Rear has sashed windows over single-storey wing. Part of the early C19 development of the north part of Stratford, known as New Town.

Maidenhead Road



30 Maidenhead Road

Regency Cottage (photo also page 65)
(Ref No. 137 - Grade II)

List description : House. 1812-14, with c1820 alterations. Painted brick; tile roof with slate front pitch and brick end stacks. Gable facing, front to left. Georgian style. 2 storeys; symmetrical 3-window range. Wide eaves soffit. Entrance has moulded doorcase with paterae and bracketed canopy, overlight to 6-panel C20 door. Flanking 2-storey canted bay windows, probably c1820, have cornice to ground floor and entablature to 1st floor, with 4:12:4-pane sashes; small central 1st floor window has 2-light casement. Gabled rear wing and parallel range. Right return has 2 gables, that to left shewing shallower front pitch; entrance with C20 door and small square windows; one 1st floor window to left has rubbed brick flat arch over 16-pane sash.

Interior: recorded as having 2 fireplaces, moulded doorcases to panelled doors; C20 staircase and arched ceiling to small landing corridor.

Meer Street

13 and 14 Meer Street (photo page 58)
(Ref No. 138 - Grade II)

List description : Town house now shop/restaurant. C16 or early C17; restored 1980s after fire; large late C20 rear addition. Timber frame with plaster infill and brick underbuilding;

renewed tile roof. 2 storeys; 3-window range. Fascia over ground floor, which has central recessed entrance with paired doors and half-glazed inner doors; large flanking C20 window with small-paned glazing. 1st floor has 2 windows with 3-light casements and one with 2-light casement, all C20 with leaded glazing; small rebuilt gabled dormer to left. 1st floor, originally jettied, has close studding.

Interior has exposed beams, timber framing and roof trusses.

(Bearman R: *Stratford-upon-Avon: a history of its streets and buildings*: Nelson: 1988-: 42).

15 and 16 Meer Street (photo page 58)

[Formerly listed as 15 Meer Street]

(Ref No. 139 - Grade II)

List description : Town house now shop/office. C16 or early C17. Timber frame with brick infill, on rubble plinth; tile roof, half-hipped to end, with brick cross-axial stack. 2-unit plan. 2 storeys; 3-window range. No 15 has entrance to left end with C20 glazed door, window to right has C20 small-paned glazing; No 16 has C20 entrance, and glazing between wall posts. 1st floor has window to No 15 with 2-light small-paned casement with iron opening casement and 2 square lights to left, one to right; No 16 has similar 2-light casement and square light to right. Right return has brick wall, retaining upper part of wall post to right, and timber-framed gable with small-paned casement. Rear has 2 hipped-gabled wings and large stack; varied fenestration.

Interior has exposed timber framing and beams.

(Bearman R: *Stratford-upon-Avon: a history of its streets and buildings*: Nelson: 1988-: 42).

Mill Lane



Soli House (Catholic Youth Hostel)
Formerly known as Avonfield, Mill Lane
(Ref No. 140 - Grade II)

List description :

Formerly known as: Avonfield, Mill Lane.

Town house, now youth hostel. 1809-10, with later wing to rear and C20 wing to left. For

William Oldaker. Double-depth plan, front to left. Georgian style. Brick with ashlar dressings; parapeted roof, partly tile, with 2 large brick stacks. 3 storeys; symmetrical 3-bay range. Ashlar plinth, 2 platt bands and plain stone-coped parapet; bays articulated by pilaster strips. Entrance has C20 glazed doors. Windows have sills, and rubbed brick flat arches over 16-pane sashes to ground floor, 12-pane sashes to 1st floor, and one 6-pane sash and 2 casements to 2nd floor. Large late C20 timber and glass lean-to sun lounge. Right return has bow window with modillioned brick cornice and hipped slate roof, 16-pane sash; rear wing has segmental-headed sashed windows and C20 gabled projection. Rear has 3-storey wings under hipped roofs flanking hipped centre with later lean-to porch, and 2-storey, 3-window, C19 range to right. Porch has much glazing and triangular dormer; inner entrance has reeded pilasters and bracketed open pediment, fanlight over 6-panel door, part glazed; round-headed stair window above has small-paned glazing. 2-storey range has segmental-headed windows with casements and one horizontally sliding sash; other windows sashed.

Interior: cornices, one room with dentilled cornice and C19 marble fireplace with round-headed iron grate, another room with mirror over fireplace; C20 staircase.

Said to have been built using some stone from the demolished chancel house attached to the Church of Holy Trinity (q.v.). At one time called Avonfield.

(Bearman R: *Stratford-upon-Avon: a history of its streets and buildings*: Nelson: 1988-: 46).

New Street

1 New Street

(photo page 44)

(Ref No. 141 - Grade II)

List description : House. 1837-8. Brick with buff headers and stucco dressings; slate roof with brick axial stack to rear of ridge and end stack. Georgian style. 2 storeys; symmetrical 2-window range. Plain eaves. Entrance has moulded doorcase with paterae and cornice, overlight with margin lights to 6-panel door. Ground floor has canted bay windows with friezes and cornices over 4:16; 4-pane horned sashes; windows to 1st floor have sills, and rusticated wedge lintels over 16-pane sashes. 1st floor left side rebuilt. Part of the early C19 development of the south part of Stratford.

(Information from Shakespeare Birthplace Trust Record Office).

2-5 New Street

(photo page 44)

(Ref No. 142 - Grade II)

(cont. over)

List description : Terrace of 4 houses, 1837-40. No 5 known to have been built by Joseph Holtom. Brick with buff headers and stucco dressings; slate roof with brick end stacks and cross-axial stack. Georgian style. 2 storeys; 4-window range. Plain eaves. Entrances to right of windows have moulded doorcases with paterae and cornices, overlight with margin lights to 6-panel door, that to No 3 has flush panels, that to No 5 has fielded panels. Windows have sills, and rusticated wedge lintels, over 16-pane horned sashes to No 4, 4-pane horned sashes to No 2 and casements to Nos 3 and 5. Part of the early C19 development of the south part of Stratford.

(Information from Shakespeare Birthplace Trust Record Office).

6, 7 and 8 New Street (photo pages 8 and 44)
(Ref No. 143 - Grade II)

List description : Three houses. 1840-1. Brick with buff headers and stucco dressings; slate roof with brick end stacks and cross-axial stack. Georgian style. 2 storeys; 5-window range, forming 2 symmetrical fronts. Plain eaves. Nos 6 and 7: pair of entrances have moulded doorcase with panelled pilasters and overlights, that to No 7 with margin lights, to C20 doors; frieze and cornice continued over flanking canted bay windows with 4:16:4-pane sashes; 1st floor has window to left with sill, and rusticated wedge lintel over 16-pane sash, 2 windows to right are C20 replacements, with small-paned casements. No 8 has central entrance with moulded doorcase with paterae and cornice, overlight with margin lights to 6-flush-panel door. Windows have sills, and rusticated wedge lintels with keys over 16-pane sashes. Part of the early C19 development of the south part of Stratford.

(Information from Shakespeare Birthplace Trust Record Office).

13 New Street (see 28 Ryland Street)
(Ref No. 194 - Grade II)

Old Town



1 Old Town
[Formerly listed as The Croft School including 1 Old Town]
(Ref No. 144 - Grade II)

List description : Town house, now office. Early C18, with c1800 front. Timber frame, brick front with buff headers; tile roof with brick end stack. Georgian style. 2 storeys with attic; symmetrical 3-window range. Centre breaks forward under pedimental gable; brick plinth and platt band over ground floor; top modillioned brick cornice and gable. Round-headed entrance has bracketed open pediment, fanlight with decorative glazing bars over 6-fielded-panelled door. Windows have rubbed brick flat arches with keys over 16-pane sashes in moulded frames; 2 hipped dormers with 2-light leaded casements flanking lunette window with key to brick arch and 3-light glazing. Left return has timber-framed wing to rear.

(Bearman R: *Stratford-upon-Avon: a history of its streets and buildings*: Nelson: 1988-: 46).

2 and 3 Old Town (photo page 45)
[Formerly listed as 2 and 3 Old Town, Annexe of the William and Mary Hotel]
(Ref No. 145 - Grade II)

List description : Two houses. c1760-61 with later alterations. Brick with stucco dressings; hipped tile roof with brick end, ridge and rear stacks. 2 storeys with attic; 4-window range. Georgian style. Stucco plinth; top cornice. Former entrance to right of centre has Tuscan pilasters, frieze and cornice; inserted window with 12-pane horned sash. Windows have sills, and rusticated wedge lintels with keys over 12-pane sashes; ground floor has 2 windows to left of entrance, 3 windows to right, the right end window with 4:12:4-pane tripartite sash. 1st floor has window over entrance with C19 cast iron window box; C19 canted oriel to left has brackets, flush-panelled apron and top frieze and cornice; 4:12:4-pane horned sash; 3 gabled dormers with 2-light casements. Returns have modillioned brick cornices and entrances. Rear has 2-storey wing with C19 half-hipped cross wing with re-entrant porch to left return.

(Bearman R: *Stratford-upon-Avon: a history of its streets and buildings*: Nelson: 1988-: 46).

4 and 5 Old Town
Old Town Place (5) (photo page 45)
[Formerly listed as 4 and 5 Old Town, William and Mary Hotel]
(Ref No. 146 - Grade II)

List description : Two houses. c1690 (though Bearman suggests 1760). Brick with ashlar and stucco dressings; hipped tile roof with rear brick stacks. 2 storeys with attic; symmetrical 5-window range with narrow centre breaking forward. Double-depth plan. Georgian style. Top dentilled cornice. Round-headed entrance has fielded-panelled pilaster trips, unusual brackets to cornice, and archivolt with key;

fanlight with thick glazing bars over 6-fielded-panel door; lantern above. Windows have sills with painted brick aprons, and rubbed brick flat arches with keys over 12-pane sashes, horned to 1st floor; 3 pedimented dormers, the centre one with C20 pediment replacing segmental pediment, and 2-light small-paned casements. Left return has projection under hipped roof; 2-storey rear wing.

Interior noted as having open-well staircase with slender turned balusters. Single-storey, 2-window, wing with attic to right (No 4) has top cornice; entrance in brick forward break has rubbed brick flat arch over 4-flush-panel door. Windows have sills, and rubbed brick flat arches over 4:12:4-pane tripartite sash to left, 12-pane sash to right; 2 hipped dormers with 2-light C20 small-paned casements. Timber-framed gable and entrance to rear. Until 1855 the Town Offices; an hotel for much of the C20.

(Bearman R: *Stratford-upon-Avon: a history of its streets and buildings*: Nelson: 1988-: 46; Forrest H E: *The Old Houses of Stratford-upon-Avon*: London: 1925-: 137-8).



6 Old Town

Old Town Cottage

[Formerly listed as Old Town Cottage]

(Ref No. 147 - Grade II)

List description : Town house. 1841-2. Stucco; fishscale-tile roof with brick end stacks. L-plan. Victorian-Tudor style. 2 storeys; 3-window range; lean-to ground floor with 2 gabled projections; pilasters to 1st floor and Tudor arches to gables, which have decorative bargeboards and finials. Entrance in recess to left of centre has overlight to half-glazed door, both with decorative glazing; recessed carriage entrance to right end has similar blind overlight to paired battened doors with ogival heads. Gabled projections have French windows with overlights and flanking single lights, all with decorative glazing, as have windows to 1st floor, with chamfered reveals and label moulds over cross-casements. Stacks have fluted shafts, retaining caps to right end. Rear has simpler

gabled wing. The house has details in common with Nos 17-19A Old Town, Nos 14 and 15 Warwick Road and houses in Bishopton (q.v.).

(Bearman R: *Stratford-upon-Avon: a history of its streets and buildings*: Nelson: 1988-: 46).



17, 18, 19 and 19A Old Town

[Formerly listed as 17-19 Old Town]

(Ref No. 148 - Grade II) (photo also page 48)

List description : Terrace of 3 town houses, incorporating flat (No 19A). 1841-2. Brick with buff headers and ashlar dressings; fishscale tile roof with 2 brick cross-axial stacks and end stack. Victorian-Tudor style. 2 storeys plus attic; 9-window range forming 3 double-fronted houses divided by brick pilasters; 1st floor sill band; top brick frieze and end gablets to each house, the frieze becoming Tudor arches to gablets, decorative bargeboards with finials and fascia; curved left end. Entrances have hollow-chamfered reveals and label moulds, overlights of 3 pointed lights to 4-panel doors with applied tracery, that to No 19 altered; plain entry door to left end. Windows have sills, hollow-chamfered reveals and label moulds over 16-pane sashes with pointed upper panes to ground floor, 12-pane sashes to 1st floor and 6-pane sashes to gablets to 2nd floor; No 18 has central 1st floor window with margin lights and pointed upper panes. Stacks have fluted shafts. Rear has 2-storey lean-to outshuts and 2 lateral stacks; C20 alterations to right end. The houses share details with No 6 Old Town, Nos 14 and 15 Warwick Road and houses in Bishopton (q.v.).

(Bearman R: *Stratford-upon-Avon: a history of its streets and buildings*: Nelson: 1988-: 46).

Church of the Holy Trinity

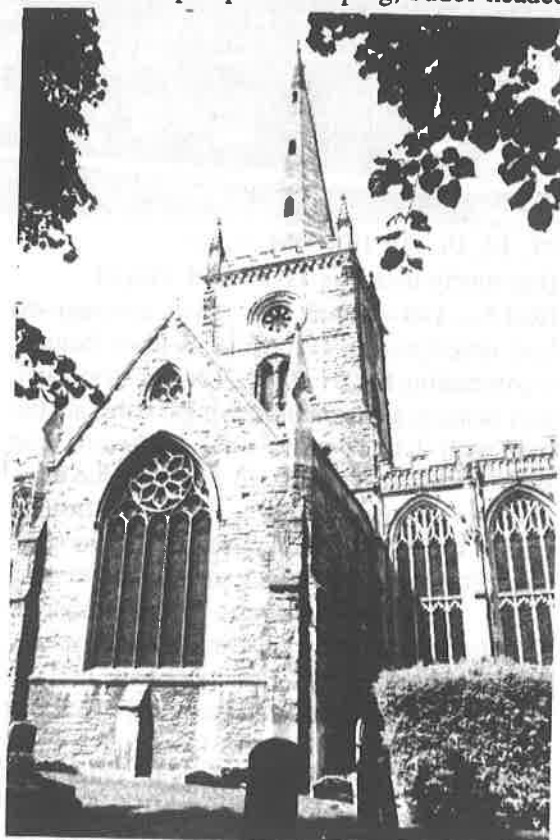
Old Town

(photos overleaf and pages 9, 23, 24, 46 and 82)

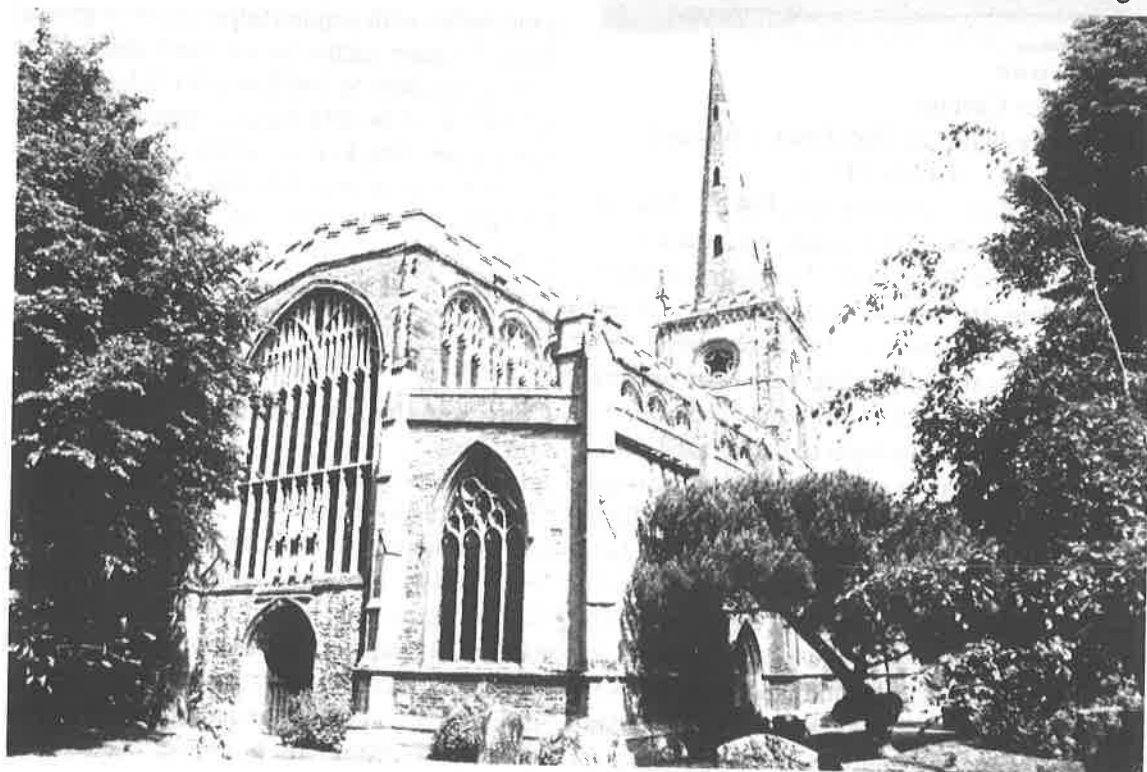
(Ref No. 149 - Grade I)

List description : Church; collegiate status from 1415 to 1547. Anglo-Saxon origins; possibly C12 work in early C13 tower, remodelled in early C14; early C13 transepts; early to mid C14 nave arcades and aisles, 1580s chancel; 1590s nave clerestory and north porch; 1763 spire by W Hiom of Warwick; restored by

William Butterfield, 1850s; by Bodley and Garner, 1888-92 and 1898. Squared stone with ashlar dressings; C15 work ashlar; lead roofs. Cruciform plan: 5-bay chancel, crossing steeple and 2-bay transepts; 6-bay nave with lean-to aisles. Chancel has moulded plinth and is articulated by offset buttresses with diagonal pinnacles, diagonal buttresses have tall pinnacles; sill course to 7-light east window and 4-light transomed side windows, all with Perpendicular tracery and hoods with insect-form stops and crockets; cornice with crenellated and traceried parapet and coping; Tudor-headed



side entrance with crocketed hood and restored tracery to C15 door. Tower has clasping buttresses, offset over lower stage and string course; small ?C12 round-headed windows to lower stage, C13 two-light bell openings to middle stage, and C14 rose windows to top stage, top corbel table and crenellated parapet with angle pinnacles; octagonal spire has 3 tiers of arched openings. Transepts have shallow buttresses and lancets; coped parapets and gables and angle pinnacles; 5-light north window with flowing tracery with spherical triangle window over, similar south window with Decorated tracery; later west entrances; south east lateral stack with C19 mural monument. North aisle has plinth, offset buttresses and cornice with gargoyles and coped parapet; 3-light windows with varied Decorated tracery shewing progression in date from east to west, window to west interrupted by 2-storey porch; offset diagonal buttresses with pinnacles flank entrance with continuous mouldings to arch and C17 battened and studded doors; 3-light window above has flanking niches; crenellated coping and gable cross; small cusped lights with crocketed hoods to sides. South aisle is similar, but buttresses have large pinnacles, octagonal turret behind diagonal buttress to angle, and cylindrical water spouts to cornice. 3-light windows with Decorated tracery, but east end has window with 3-centred head and ogee-headed lights and extra 2-light plate tracery window because of different alignment of transepts and chancel; flowing tracery to west window; entrance with continuous moulding and C19 doors, end bay to left has C18 mural monuments. Clerestory has cornice and crenellated coping and parapet; two 3-light



windows with Perpendicular tracery to each bay; large 9-light transomed west window has inset niches over entrance with continuous moulding and C15 traceried doors. Several C18 rainwater heads.

Interior: chancel has hammer-beam roof on corbel heads and angels with shields; shallow crocketed niches between windows, niches flanking east window have insects to bases and crocketed gables and pinnacles, C19 statues; north door has crocketed hood and corbels with St Christopher and the Resurrection. Sedilia and piscina with angel busts to seats and nodding ogee heads. Crossing has C19 rib vault. Nave has arcades on hexagonal piers, wall shafts on angel corbels above are flanked by panelling to spandrels; brattished corbels to C15 roof: traceried arch braces to moulded principals and tie beams, moulded members to panelled ceiling with bosses. North aisle has restored roof, entrance with C15 doors with linenfold and traceried panels and C13 sanctuary knocker, and smaller entrance to upper floor of porch; porch has rib vault on angel corbels, with Trinity boss, panelled walls, mutilated water stoups; upper floor with fireplace and moulded beams. South aisle has roof with C14 roof with moulded beams on corbel heads; heavily restored sedilia and piscina for chapel of the College.

Fittings: chancel has heavily restored c1500 rood screen with tracery heads to bays, vine-trail cornice and brattishing; c1500 stalls and fronts, with richly carved misericords with domestic scenes, mythical beasts etc; C19 altar with mensa from medieval altar and traceried front and reredos; C19 brass altar rail; C15 mutilated font returned to church in 1823. Crossing has C19 rib vault; 1720 candelabrum; partly C15 north transept screen. South transept with C20 fittings to chapel of St Peter. Nave has organ case over crossing arch by Bodley and Garner, 1889; dark marble pulpit, 1901, with white figures to ogee-headed niches and stair balustrade; C19 Perpendicular style font with rich traceried panels, modelled on the original; C18 and 1916 sword rests to front pews; 1714 Royal arms in rich painted frame, AR replaced by GR. North aisle has C19 screen to Clopton Chapel with enriched arched heads, vine-trail and brattishing.

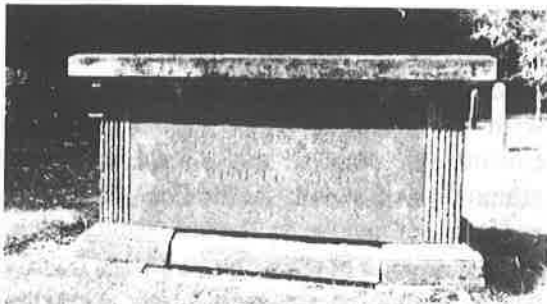
Monuments: chancel: Dean Balshall, d 1491, but earlier, chest tomb with canopied relief scenes of Passion and Resurrection to sides, top has indents for brasses; John Coombe, d 1614, by Gerard Johnson (Janssen), altar tomb to left of altar, recumbent effigy under round arch with strapwork frame to inscription panel, flanking Corinthian columns, cornice and

obelisks flanking armorial panel; William Shakespeare, d 1616, by Gerard Johnson, mural tablet with inscription below round-headed niche with front-facing demi-figure, flanking Corinthian columns and entablature with armorial panel above; Judith Combe, d 1649, and Richard Coombe, by Thomas Stanton, mural tablet similar to Shakespeare's, 2 busts holding hands, 3 armorial cartouches over segmental pediment; James Kendall, d 1758, by Rysbrack, inscribed plinth supporting bust on pedestal with flanking putti; John Dennis, d 1838, by Richard Westmacott, mural tablet with kneeling woman; original floor slab to W Shakespeare, those to members of his family recut 1844. South transept: Richard Hill, d 1593, altar tomb with fluted pilasters flanking round-headed recess, inscription in Hebrew, Greek, Latin and English.

Clopton Chapel: several monuments including cenotaph to Hugh Clopton, d 1496, chest tomb with 4-centred arch set into arcade, with entrance arch to side, fluted piers, Tudor flower cornice and brattishing, arms of Clopton, London and Wool Staplers' Co; William Clopton, d 1592, and Agnes, chest tomb with balusters between armorial bearings, black letter to cornice and 2 recumbent effigies, panel with children and armorial panel to wall above; George Carew, Lord Totnes, d 1629, and Joyce, d 1635, altar tomb with relief of guns, barrels and flags, 2 recumbent effigies under coffered round arch with flanking Corinthian columns supporting angels, inscription panels, shields and figures to back, and return trophies, armorial bearing above; Amy Smith, d 1626, waiting gentlewoman to Lady Clopton, mural tablet with relief kneeling woman. Many other good C17, C18 and C19 wall tablets and floor slabs, e.g. wall tablet to north transept: Thomas Harbert, carver, d 1738, with carving of his tools.

Stained glass: mostly C19 and early C20, but some medieval fragments to north aisle; Kempe windows to south aisle and north aisle west window. A church with good C15 work, misericords and monuments; of international importance for its Shakespearian connections, especially his tomb.

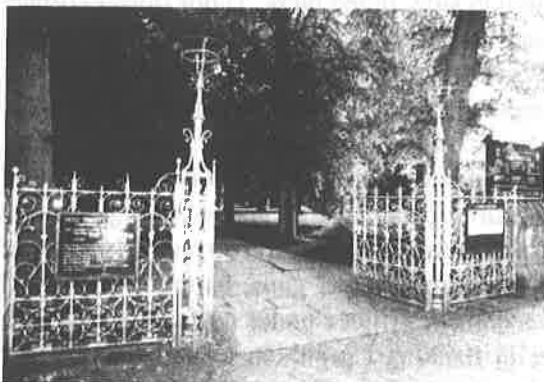
(*Buildings of England*: Pevsner N: *Warwickshire*: Harmondsworth: 1966-: 411-4; *Victoria County History* (offprint): Styles P: *The Borough of Stratford-upon-Avon and the Parish of Alveston*: London: 1946-: 53-60; Fogg N: *Stratford-upon-Avon: Portrait of a Town*: Chichester: 1986-: 1-7 ETC; *The Collegiate Church of the Holy Trinity, Stratford-upon-Avon*: Stratford-upon-Avon: 1988-).



Bache Tomb approx. 15.5m north of north aisle of Church of the Holy Trinity Old Town

(Ref No. 150 - Grade II)

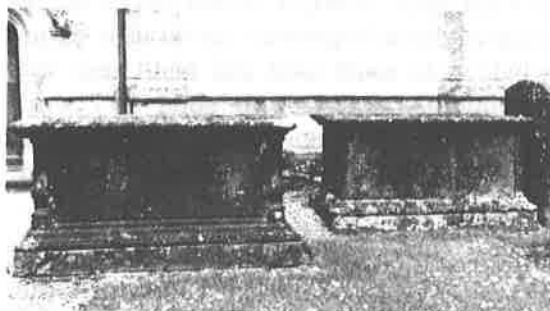
List description : Chest tomb to members of the Bache family, also of the Salmon and Gray families. c1802. Ashlar. Moulded plinth, fluted balusters and ?re-cut plain top slab. Mary and Richard Salmon, d 1741 and 1754, recorded on the south side; William and Mary Bache, d 1802, recorded on the north side; Mary and John Bache, d 1808 and 1826, and Thomas and Hannah Gray, d 1764 and 1781, recorded to ends.



Gate in Churchyard wall to north of Church of the Holy Trinity Old Town

(Ref No. 151 - Grade II)

List description : Gate, gatepiers and flanking screens. Probably mid C19. Wrought iron and cast iron. Openwork gatepiers, with scrolly enrichment, support holders for lanterns. Paired gates with rich scrollwork and flanking screens.



Group of 2 tombs immediately south of chancel of Church of the Holy Trinity Old Town

(Ref No. 152 - Grade II)

List description : Two chest tombs to Easthope

and Smith families. c1810 and c1820. Ashlar. That to west: moulded plinth, moulded balusters in rebates and moulded edge to top slab, fielded panels, 2 to each side. Susannah and Edward Easthope, d 1795 and 1810, recorded on south side; Elizabeth, d 1837, Sarah, d 1818, Goodwin and 2 other infants recorded on north side; Mary, d 1805 and another daughter, d 1800, recorded to ends. Tomb to east: moulded plinth and edge to top slab. James Smith and his wife Dorothy, d 1812 and 1820 recorded on south side, Harriet Edwards and Lucy Smith, d 1835 and 1835, recorded to east end.

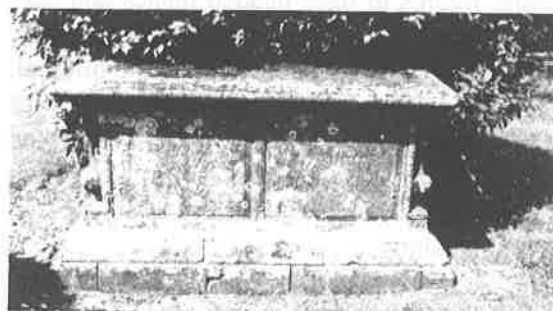


Hearse House approx. 23m south of Church of the Holy Trinity

Old Town

(Ref No. 153 - Grade II)

List description : Hearse house. Mid C19. Coursed rubble with ashlar dressings; parapeted roof with rear lateral stack. Gothic style. Single storey; 3-window range. Plinth, 3 offset buttresses and top cornice with 2 gargoyles and coped parapet. 4-centred entrance to left of centre has paired plank doors with strap hinges. Double-chamfered-mullioned windows with 4-centred heads to lights: 2-light window to left end is blocked, 3-light windows to right have leaded glazing. 2 crenellated rainwater heads and downspouts. Left return has 2 doors in single-chamfered openings; right return has large entrance with paired doors. Rear is built into churchyard wall. Included for group value.



Hopkins Tomb approx. 19m north of north aisle of Church of the Holy Trinity Old Town

(Ref No. 154 - Grade II)

List description : Chest tomb to members of

the Hopkins family. 1790s. Ashlar. Moulded plinth, moulded balusters set in rebates and moulded edge to top slab; fielded panels, 2 to sides. Elizabeth Hopkins, d 1792, and her infant son recorded on south side; Richard Hopkins, d 17-, recorded on north side.



Lord Headstone approx. 23.5m north of porch of Church of the Holy Trinity Old Town

(Ref No. 155 - Grade II)

List description : Headstone to Richard Lord, mason, d 1741. Ashlar. Nowy-headed stone has low relief scrolly decoration above and below oval inscription panel; cherub to head. A good example, unusual in recording trade of the deceased.



Lord Tomb approx. 17.5m north of chancel of Church of the Holy Trinity Old Town

(Ref No. 156 - Grade II)

List description : Chest tomb to members of the Lord family. 1780s. Ashlar. Moulded plinth, recessed balusters with moulded bases and top

slab obscured by ivy. Richard Lord, d 1785, his son John, d 1827, and wife Ann, d 1829 recorded on south side; Richard Lord, d 1760, recorded to west end.



Payton Tomb approx. 11m south of chancel of Church of the Holy Trinity

Old Town

(Ref No. 157 - Grade II)

List description : Tomb to members of the Payton family. c1820. Ashlar. Moulded plinth and edge to top slab. Elizabeth and John Payton, d 1802 and 1818, recorded on south side; William Shakespeare Payton, d 1789, recorded on north side. John Payton was the proprietor of the White Lion hotel, an important coaching inn in the C18 and C19; he (or more probably his father) was one of those who organised the 1769 Shakespeare Jubilee.

Dower House and Avon Croft and attached Garden Wall

Old Town

(photo page 48)

(Ref No. 158 - Grade II*)

List description : House, divided into two c1740, and attached wall. C16 origins with later alterations and additions including C17 north wing: Avon Croft. Timber frame with roughcast cladding; tile roofs with brick stacks. Hall and cross-wing forming L-plan with parallel rear wing attached to cross-wing. 2 storeys; 6-window range to street; left half is Avon Croft. Brick platt band and top cornice. Entrance to Avon Croft has architrave, frieze and cornice, overlight to C20 panelled door; flanking windows with sills and 12-pane sashes in architraves, 3 similar windows above. Entrance to Dower House has plain doorcase, frieze and cornice to 6-fielded-panel door, side windows with 8-pane sashes; 3 other ground floor windows have 12-pane sashes with architraves; 1st floor has 3 flat-roofed half-dormers with 12-pane horned sash and two 16-pane sashes. 2 cross-axial stacks and stack to rear of ridge. Angle to right has attached 2-storey ?C18 block with gabled roof and round-headed entrance to right return with shell hood; window with 12-pane thick-bar sash over. Right return to

Southern Lane has 2-storey gabled projection between gables, some sashed windows; stone cross-axial stack with 4 clustered but separate diagonal brick shafts. Rear has small 2-storey gabled wing with return lean-to to left of larger range with close-studding to return and 2 gables to front; some sashed windows and stone cross-axial stack with 3 truncated diagonal brick shafts; single-storey wing under hipped roof to right end. Rear of Avon Croft has some square framing; gabled stair wing with return window with 9/6-pane thick-bar sash, similar 12-pane sash to right, to left of gabled porch; mostly small-paned casements; small courtyard has gables to sides. Early C19 garden wall attached to angle of house, with round-arched gateway with studded door, and running approx. 40m along Southern Lane; brick with round-angled pilaster strips and modillioned cornice to offset coping, recessed gatepiers and C20 gate toward right end.

Interior: Dower House recorded as rich in original features; front range has 1st floor open to roof with has smoke-blackened rafters suggesting original open hall; return wing has ground floor room with stone fireplace and late C16 panelling with fluted frieze and 3-panel overmantel, another has C18 panelling and late C18 fireplace; dog-leg staircase has simply turned balusters and moulded handrail, panelled newels with enriched pyramidal finials, possibly installed by Shakespeare in New Place and removed by Sir John Clopton on its demolition in 1702; 1st floor room has stone fireplace and late C16 panelling. Avon Croft has dog-leg staircase with slender balusters and square newels; some dado panelling and 2- and 6-fielded-panel early C18 doors.

The house was possibly the manor house for Stratford, and was owned by the Clopton family until 1738, probably serving as the dower house.

(*Victoria County History* (offprint): Styles P: *The Borough of Stratford-upon-Avon and the Parish of Alveston*: London: 1946-: 16; Bearman R: *Stratford-upon-Avon: a history of its streets and buildings*: Nelson: 1988-: 44; Forrest H E: *The Old Houses of Stratford-upon-Avon*: London: 1925-: 141-2; Jaggard G: *Companion to Stratford*: Stratford-upon-Avon: 1964-: 55-59).

Hall's Croft and attached Garden Wall

Old Town (photo pages 45 and 48)
(Ref No. 159 - Grade I)

List description : Town house now museum and club and attached wall. Early C16 with c1600 addition to right; C19 and C20 alterations and 1920s and 1950s restorations. Timber frame with plaster infill on coursed rubble plinth; tile roof with stone and brick stacks. 3-unit plus

cross-wing plan. 2 storeys with attic; 4-window range. Left half has jettied 1st floor with 2 gables, the right half has gable to right. Entrance to left of centre has studded and battened door with overlight. Wooden-mullioned windows: 4-light window to left of entrance and small 2-light window to right; right end has 2-storey canted bay window with dentilled cornice and 1:3:1-light windows; 1st floor has 3-light ovolo-mullioned window flanked by 4-light windows and 2-light window to right; gables to left have 3-light windows. Large cross-axial stack has 4 clustered and attached brick shafts. Left end has close studding with square framing to 1st floor; right end has storey-height posts with middle rail. C20 timber gutters and lead rainwater heads and downspouts. Right return has single-storey addition with flat-roofed projection to front which has entrance with battened door; return has segmental-headed windows with 8:16:8-pane sashes, and 2-storey timber-framed wing to rear; entrance has studded and battened door with strap hinges. Rear has right end as to front, with varied mullioned fenestration; wing to left has storey-height posts; re-entrant block has gable to each side and paired mullioned windows, entrance to angle with plank door. Large axial stack to left end, and stack to left of right end gable with diagonal brick shafts. Attached wall extends approx. 43.5m to left along Old Town; coursed rubble with brick coping, paired gates with timber gatepiers to right end attached to house.

Interior: heavy chamfered beams and joists; ground floor has flagged floors. Hall has stone fireplace with Tudor arch in square-headed architrave, battened door to room to left, which has similar fireplace; room to right end has stone fireplace and C17 panelling with entablature; open-well staircase to rear wing has simply turned balusters, dentilled handrail and string, and square baluster-form newels with finials; rear kitchen has large elliptical-headed fireplace with fan-spit and battened doors. 1st floor has right end room with barrel vaulted ceiling and Tudor-arched fireplace; room to left, formerly ?3, has 2 similar fireplaces. Formerly the home of John Hall, 1575-1635, an eminent local physician, and his wife Susanna Shakespeare, 1583-1649, from their marriage in 1607 until they moved to New Place after her father William Shakespeare's death in 1616; it was bought by the Shakespeare Birthplace Trust in 1949 and opened to the public; part is used by the Festival Club.

(*Victoria County History* (offprint): Styles P: *The Borough of Stratford-upon-Avon and the Parish of Alveston*: London: 1946-: 15-6; Fox L: *Hall's Croft*: Norwich: 1981-).



Old Town Croft
Old Town
(Ref No. 160 - Grade II)

List description : Town house and outbuildings. Late C16 with later additions. Timber frame with plaster infill on rubble plinth, and brick, some painted; tile roof, with brick stacks. 4-unit cross-wing plan. Single storey plus attic and 2-storey cross-wing to right. Entrance to left of centre has original studded with strap hinges and ring-handle in moulded frame; C20 garage door to right end. Entrance flanked by small 2-light windows, 3-light mullioned window to right; 1st floor has paired gabled dormers each with 3-light windows, gable end has 4-light window with higher 2-light window to left; single-storey range to left has 3 large 3-light transomed windows; all windows are leaded. Coachhouse to left end has paired doors and battened door to return. 2 brick stacks to rear of ridge, one with cluster of diagonal shafts. Right return has jettied 1st floor over exposed soffit timbers; the projecting 2-storey gabled porch is probably later, and has open sides and 3-light return windows; 2 entrances, one with leaded overlight to sliding door, one in heavy moulded frame with original battened door; small-paned window and 2 windows with 10/5-pane sashes. Rear has high stone plinth; gabled wing with jettied 1st floor and dragon beam to each corner, gabled dormer to right, 2-light leaded windows to ground floor, 4-light window to gable with 3-light window above; gabled right return has gabled re-entrant stair wing next to French window; range to right has brick and stone with timber-framed upper part; entrance with heavy moulded frame and external stack with stone quoins, lean-to outshut to right end. Left return service range, part of the Hall's Croft service buildings, has single-storey block with entrances, one battened door; c1900 two-storey, 3-window, end range has two 2-storey bay windows with leaded glazing to recessed left end.

Interior: noted as having open-well staircase with turned balusters and some panelling.

Probably originally service buildings to the Dower House (q.v.).

(Victoria County History (offprint): Styles P: *The Borough of Stratford-upon-Avon and the Parish of Alveston*: London: 1946-: 16).

Old Tramway Walk

(former listings may read *Bridgetown*)



Old Tramway Bridge

Old Tramway Walk

(photo also page 22)

(Ref No. 8 - Grade II)

List description : Tramway bridge, now footbridge. 1823 with later parapets. John Rastrick, engineer, for Stratford and Moreton Tramway. Brick with ashlar dressings. 8 elliptical arches, that to south east end a flood arch, with piers on cutwaters to both sides. Ashlar-coped brick parapets. Built to carry a horse tramway from the Stratford Wharf to Moreton-in-Marsh. The tramway, which was originally intended to be extended to London, had a branch to Shipston-on-Stour. It was bought by the Oxford, Worcester and Wolverhampton Railway in 1847 and closed, except for the branch line, in 1881; details of history given on a restored truck (not included) preserved approx. 60m to north of bridge. The bridge is an important element in the landscape around the Shakespeare Memorial Theatre.

(Fogg N: *Stratford-upon-Avon: Portrait of a Town*: Chichester: 1986-: 120-4, 156, 167N; *Buildings of England*: Pevsner N: *Warwickshire*: Harmondsworth: 1966-: 416).



Tramway House

(see photo above)

Old Tramway Walk

(Ref No. 11 - Grade II)

(cont. over)

List description : Toll house at the north west end of the tramway bridge (q.v.). 1825-6. For the Stratford and Moreton Tramway. Brick; slate roof. 2 storeys; 2-window range. Top modillioned brick cornice. Small-paned windows to ground floor have C20 metal small-paned glazing; segmental-headed windows to 1st floor have 2-light small-paned casements. Right return facing bridge has gate connecting house with parapet of bridge; segmental-headed entrance with gabled canopy and half-glazed door to right of segmental-headed window with 2-light small-paned horizontally sliding sash; similar 1st floor window; lateral stack. Left return has wall-mounted lantern.

(Norris J: *The Stratford and Moreton Tramway*: Guildford: 1987:- 44.)

Payton Street

1, 2 and 3 Payton Street (photo page 32) (Ref No. 161 - Grade II)

List description : Terrace of 3 town houses. c1840, Nos 1 and 2 c1845. Brick with buff headers; slate roof with brick end stacks and cross-axial stack. Georgian style. 2 storeys; 7-window range: symmetrical 4-window and 3-window fronts. Plain eaves soffit. Entrances have aedicules with Doric pilasters and Tuscan entablatures, overlights with decorative glazing bars to 3-panel doors, paired entrances to Nos 1 and 2, that to No 3 has 6-fielded-panel door. Windows have sills, and rusticated wedge lintels with keys over 12-pane sashes; blind window over entrance to No 3. Left return has blind window to each floor; rear has catslide outshuts and one lean-to outshut. Part of the early C19 development of the northern part of Stratford, known as New Town.

(Information from Shakespeare Birthplace Trust Record Office).



**4 Payton Street (photo above, left; also page 32)
(Ref No. 162 - Grade II)**

List description : Town house, now flats. Early to mid C19. Brick; slate roof with brick end and rear stacks. Georgian style. 2 storeys;

symmetrical 3-window range. Wide eaves with slender brackets to gutter. Round-headed entrance has doorcase with fluted pilasters and bracketed open pediment, fanlight with radial glazing bars over 6-fielded-panel door. Ground floor has windows with sills and 16-pane sashes; 1st floor has 2 later C19 canted oriels with aprons, bracketed cornices, 2:4:2-pane horned sashes flanking window with sill, and segmental head over C20 top-hung casement replacing blind window. Much altered lower side wing has segmental-headed window with 9-pane sash and entry to right. Rear has been altered. Part of the early C19 development of the northern part of Stratford, known as New Town.

5 Payton Street (photo with 4 Payton Street, right) (Ref No. 163 - Grade II)

List description : House. Early to mid C19. Brick with buff headers; slate roof with brick end stacks. Georgian style. 2 storeys; symmetrical 3-window range. Plain eaves. Entrance has doorcase with reeded pilasters, frieze and cornice, overlight to 6-fielded-panel door. Windows have sills and 12-pane sashes, those to ground floor under cambered arches. Stacks have round shafts. Right end has late C20 addition with garage door. Part of the early C19 development of the northern part of Stratford, known as New Town.



**19 and 20 Payton Street
(Ref No. 164 - Grade II)**

List description : Pair of town houses. Early to mid C19. Brick with buff headers; slate roof with brick cross-axial stack. Double-depth plan. Georgian style. 3 storeys; 2-window range. Modillioned brick cornice. Entrance to No 20 to right return in lean-to outshut has doorcase with moulded pilasters and bracketed open pediment, narrow overlight to 4-fielded-over-2-flush-panel door; entry in wall to right. Windows have sills, and painted rubbed brick cambered arches over 12-pane sashes, 6-pane sashes to 2nd floor. Area wall with round-headed

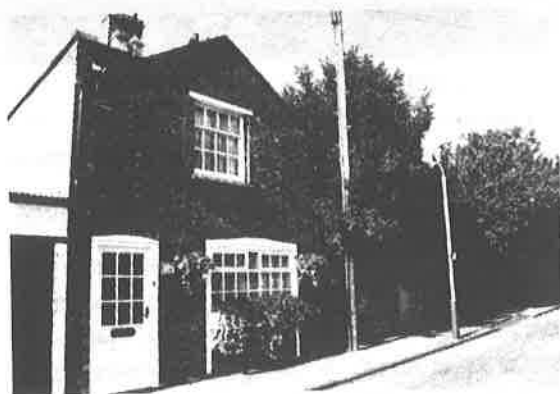
entry to left end. Left return has hipped porch with front entrance to No 19 as to No 20 but with overlight-style fretwork fascia to canopy. 2-storey rear range. Part of the early C19 development of northern Stratford, known as New Town.



21 and 21A Payton Street
[Formerly listed as 21 Payton Street]
(Ref No. 165 - Grade II)

List description : Town house, now 2 houses. Early C19 with later alterations. Brick with stucco front; low pitched hipped asbestos tile roof with rear brick lateral stack. Georgian style. 2 storeys; symmetrical 3-window range with later single-window range to right. Moulded stucco plinth and top frieze and cornice. Entrance has Tuscan aedicule and overlight with decorative glazing bars to 2-fielded-panel door; entrance to right end has overlight to C20 door. Windows have sills and 16-pane sashes to ground floor, 12-pane sashes, one horned, to 1st floor. Returns have modillioned brick cornice, left return has late C19 two-storey canted bay window with French window and small-paned casements.

22 Payton Street (see 7 John Street)
(Ref No. 134 - Grade II)



24 Payton Street
(Ref No. 166 - Grade II)

List description : Town house. Early to mid C19. Brick with buff headers and ashlar dressings; double-span slate roof with brick end stacks. Gable facing, front to right. 2 storeys; 3-window range with small 2-storey addition to

right, with single-storey conservatory. Top modillioned brick cornice. Round-headed entrance has doorcase with bracketed open pediment, fanlight with radial glazing bars over panelled door. Flanking 2-storey bay windows with sills and top cornices, 4:16:4-pane horned sashes, central 1st floor window with wedge lintel over casement; addition has 12-pane sash to 1st floor. Conservatory has tripartite front with half columns and top frieze and cornice, hipped roof and small-paned glazing. Left return has 2-storey service wing; rear parapet with cross-axial stack; return to street has segmental-headed entrance with C20 door to left of altered wide opening with C20 casement window, 1st floor has window with brick sill, and timber lintel to 4/8-pane sash.

Baptist Church
Payton Street

(photo page 32)

(Ref No. 167 - Grade II)

List description : Baptist Church. 1835-6. Painted brick with stucco front; slate roof. Rectangular plan. Simple Greek Revival style. Channelled rustication to front, and tetrastyle Doric portico, with unfluted columns in pairs, triglyphs and guttae to entablature, date to pediment. Entrance has doorcase with panelled pilaster strips, rosettes and altered pediment; paired half-glazed doors. 4-window returns have modillioned brick cornices and tall plain battered windows with sills, and rubbed brick flat arches over small-paned glazing, 2 with leaded glazing to left return, end gabled projection; right return has end round-headed window over entrance. Interior noted as having aedicule to end, cornice and ceiling roses.

Baptist meetings started in 1826, and a church was organised in 1832. Part of the early C19 development of northern Stratford, known as New Town.

(Bearman R: *Stratford-upon-Avon: a history of its streets and buildings*: Nelson: 1988-: 65).

Baptist Church Sunday School

Payton Street

(photo page 32)

(Ref No. 168 - Grade II)

List description : Sunday School. 1861. By Joseph Lattimer. Stuccoed brick with hipped slate roof. Classical style. Single-storey; symmetrical 5-window range. Angle pilasters and top entablature. 2-storey porch has paired pilasters and open pediment; segmental-headed entrance has stilted archivolt with blind tympanum over paired half-glazed doors. Paired round-headed windows have moulded sills with aprons, and imposts, archivolts and faceted keys, small-paned fixed glazing; segmental-headed

window with sill and architrave to 12-pane horned sash over entrance. Rear has high round-headed windows over lean-to outshut. Included for group value.

(Information from Shakespeare Birthplace Trust Record Office)

Duke's Hotel

Payton Street (photo pages 13 and 30)

[Formerly listed as **The Fold Hotel**]

(Ref No. 169 - Grade II)

List description : Two houses, now hotel. 1818-26. Brick with stucco front; hipped slate roof with brick internal stacks. Double-depth plan. Regency style influenced by Leamington Spa. 3 storeys; 6-window range; ends break back. Wide eaves on paired brackets. End entrances recessed behind distyle-in-antis porches with fluted Doric columns, architraves and overlights with decorative glazing bars to 6-fielded-panel doors. Windows have sills, those to ground floor are round-headed with sashes with glazing bars, those to 1st floor with 12-pane sashes, those to 2nd floor with 6-pane sashes. Returns with top modillioned brick cornices; right return entrance has doorcase with pilasters, frieze and canopy to flush-panel door; altered rear. Part of the early C19 development of northern Stratford, known as New Town; Payton Street named after John Payton, landlord of the White Lion Inn, who sold the land in 1817.

(Bearman R: *Stratford-upon-Avon: a history of its streets and buildings*: Nelson: 1988-: 64-5; Information from Shakespeare Birthplace Trust Record Office).

Rother Street

1-4 Rother Street

Mason's Court (photo page 10)

[Formerly listed as 2 and 3 Rother Street, Mason's Court]

(Ref No. 170 - Grade II*)

List description : Town house, now 4 dwellings. C15, c1485 with later alterations. Timber frame and plaster with later brick infill; partly renewed tile roof with brick stacks. Wealden house with 2 rear wings, the right wing of original width. 2 storeys; 5-window range. The left wing is jettied on exposed soffit timbers and curved brackets; lateral curved brackets and coving to hall; right wing has later timber-framed underbuilding, bay to right without jetty. Through passage to right of hall now open to ends with gates, entrance to left (No 1) and entrance to end of right wing (No 2), both with C20 plank doors. Windows with wooden mullions and leaded casements, mainly of 2 or 3 lights, but one of 4 lights to right wing; hall has original tall 4-light diagonal-mullioned

window shuttered inside and now glazed, small 3-light oriel to coving to right. End stack and large stack with diagonal shafts to junction with rear wing to right. Left return has timber frame with brick infill and lower C17 rear wing with stone plinth and some square framing, stacks to rear of ridge. Right return has timber-framed gable with brick infill and c1600 rear wing with square framing, mostly plastered infill and end stack. Courtyard has catslide outshut with gabled dormer to rear of main range; wing to right has timber frame over stone ground floor.

Interior: hall (No 1) runs through 2 storeys with gallery; right wing (No 2) has front room with former jetty bressumer and fragments of C16 wall painting, a fireplace with Tudor royal arms above, and panel of lattice work with triangular-pattern frieze; c1600 panelling with cornice and door to rear room; exposed wattle-and-daub panel over passage to rear, covered by outshut roof. A rare and documented medieval survival conforming to the burgage plots laid out in 1196.

(Bearman R: *Stratford-upon-Avon: a history of its streets and buildings*: Nelson: 1988-: 47; *Warwickshire History: Mason's Court*: Stratford-upon-Avon: 1969-: 26FF).



7 and 8 Rother Street

Citizens Advice Bureau (7)

[Formerly listed as 7 and 8 Rother Street, Sherington Hotel (7)]

(Ref No. 171 - Grade II)

List description : Pair of town houses, part now office. c1798. Brick with buff headers and ashlar dressings; slate roof with brick end stacks and cross-axial stack. 3 storeys; 6-window range forming 2 double-fronted houses. 2 brick platt bands and top plain stone-coped parapet. Round-headed entrances have porches, No with plain columns and Tuscan entablature, fanlight with radial glazing bars over 6-panel door, 2 glazed, 2 fielded and 2 flush panels. No 8 similar, but partly enclosed porch with lotus capitals to columns and stained glass fanlight. Windows have sills, and rubbed brick flat arches; 4:12:4-

pane tripartite sashes to ground floor, 12-pane sashes to 1st floor, but left end window is taller, with 18-pane sash; 6-pane sashes to 2nd floor. Interior noted as having stick-baluster staircases. (Bearman R: *Stratford-upon-Avon: a history of its streets and buildings*: Nelson: 1988-: 49).

11 and 12 Rother Street (photo below, left)
(Ref No. 172 - Grade II)

List description : Town house, now 2 dwellings. Probably C15, with later alterations. Timber frame with brick infill; tile roof with brick stacks to slope. Wealden plan with rear wing. 2 storeys; 3-window range. Timber frame 1st floors to cross-wings, with later brick underbuilding forming flush facade. Entrances to right ends of cross-wings have C20 plank doors. Segmental-headed window with 3-light casement to ground floor of right wing, two C20 canted oriels to centre and left end; 1st floor has varied windows with small-paned casements of 2 and 3 lights. Left return with coped gable and tile-hung rear wing. Interior not inspected.

(Bearman R: *Stratford-upon-Avon: a history of its streets and buildings*: Nelson: 1988-: 47).

13 Rother Street

WRVS Office (photo below, centre)
(Ref No. 173 - Grade II)

List description : Town house, now office. 1830s. Brick with stucco dressings; slate roof with brick end stacks. Double-depth plan. Georgian style. 3 storeys; single-window range. Stucco plinth and plain eaves soffit. Round-headed entrance to right has doorcase with reeded pilasters, dentilled brackets to open pediment, fanlight with radial glazing bars over

6-flush-panel door. Ground floor has canted bay window with entablature and 4:16:4-pane glazing; 1st floor has window with sill, and rusticated wedge lintel with key over 16-pane sash; similar 2nd floor window with 4/8-pane sash.

14 and 15 Rother Street

Civic Hall (photo below, right; and page 59)
[Formerly listed as The Municipal Offices]
(Ref No. 174 - Grade II)

List description : Pair of houses, now offices of Stratford-upon-Avon Town Council with shops to ground floor and late C20 public hall to rear addition. 1830. Stuccoed brick; hipped slate roof with brick internal stacks. Double-depth plan. Georgian style. 3 storeys; symmetrical 7-window range; ends break back. Rusticated ground floor, 1st floor sill band and top cornice. Round-headed entrance with gates has porch with baseless fluted Doric columns and Tuscan entablature. Ground floor has round-headed windows with sills and plate glass horned sashes, but end windows have vermiculated keys and similar tripartite sashes; windows to 1st floor have architraves to plate glass horned sashes, and 2nd floor has similar windows with 4/8-pane sashes. Rear altered for entrance to public hall.

Interior: open-well staircase and landing with stick balusters.

The building was used as the 1st post-Reformation Catholic chapel 1852-7 and as a nursing home and children's hospital from 1876.

(Bearman R: *Stratford-upon-Avon: a history of its streets and buildings*: Nelson: 1988-: 49).





16 Rother Street

(Ref No. 175 - Grade II)

List description : Town house, now shop. C18 with later alterations. Stucco: tile roof. 2-unit plan. 2 storeys; 2-window range. Plain plinth and platt band; top frieze and cornice. Entrance to right of centre has doorcase with reeded pilasters and consoled open pediment; blind overlight to C20 glazed door; recessed garage doors to right. Window to ground floor has sill and plate glass horned sash; 1st floor has windows with 12-pane sashes in timber architraves.

Interior has some cornices to ground floor.

(Bearman R: *Stratford-upon-Avon: a history of its streets and buildings*: Nelson: 1988-: 49).

17 Rother Street

York House

[Formerly listed under 17 and 18, York House Hotel (18)]

(Ref No. 176 - Grade II)

List description : House, now office. Probably C17 with C20 front. Timber frame, with rubble ground floor and 1st floor applied framing with roughcast infill to front; renewed tile roof with brick end stack. 2 storeys; 3 window range. Jettied 1st floor and 3 gables with enriched bargeboards and finials. Entrance to right of centre has C20 half-glazed door. Ground floor has 3 canted bay windows with plate glass horned sashes; 1st floor has paired 12-pane sashes, the outer pairs horned.

Interior: some exposed timber framing and chamfered beams; 2 grilles, one over doorway. Probably originally a farmhouse.

(Bearman R: *Stratford-upon-Avon: a history of its streets and buildings*: Nelson: 1988-: 48).

18, 18A and 19 Rother Street

[Formerly listed under '17 and 18 Rother Street' and '19 Rother Street']

(Ref No. 177 - Grade II)

List description : Town house, now shops/dwellings. Probably C17 with C19 refronting. Timber frame with painted brick front; tile roof, with some C20 renewal; brick stacks to rear of ridge. 3-unit plan. 2 storeys; 3-window range. Top modillioned cornice. Two C20 shop fronts flank entrance to No 18A which has C20 door. Windows to 1st floor have C20 casements.

Interior: exposed chamfered beams. Probably originally a rear wing to No 23 Greenhill Street, Old Thatch Tavern (q.v.). Included for group value.

27 Rother Street

Manor House Flowers

(photo page 58)

(Ref No. 178 - Grade II)

List description : Town house, now shop/dwelling. Probably C17 with C19 refronting. Painted brick with some stucco to internal timber frame; tile roof with central break and brick end and cross-axial stacks. 2 storeys; 4-window range. Top modillioned brick cornice. Segmental-headed entrance in 2-storey gabled stuccoed porch to left of centre has key over panelled door, and flanking roundels; 1st floor sill band to window with plate glass horned sash, and top moulded verge and roundel in panel. Porch flanked by 2-storey canted bay windows with top cornices and hipped roofs; 2:4:2-pane horned sashes; right end has carriage entrance with 1st floor flat-roofed half dormer with 3-light small-paned glazing. Some exposed timber framing to right end. Rear has exposed timber framing over entry; C19 and late C20 gabled wing adjoining range of shops (not included); some windows are sashed.

Interior: ground floor is much altered and has chamfered beams.

(Bearman R: *Stratford-upon-Avon: a history of its streets and buildings*: Nelson: 1988-: 48).

31 Rother Street (see 27 and 28 Wood Street)

(Ref No. 261 - Grade II)



32 and 33 Rother Street
(Ref No. 179 - Grade II)

List description : 2 town houses. Late C16 or C17 with c1800 and C20 alterations. Timber frame with brick and coursed rubble infill, the left half, No 32, with brick front with buff headers, 1st floor partly rebuilt in C20; renewed tile roof with 2 brick stacks to front of ridge. 2 storeys; 4-window range. No 32 has top modillioned cornice. No 32 has central segmental-headed entrance with plank door; entrance to No 33 has C20 plank door. Windows to ground floor have C20 small-paned casements, one to left of centre with segmental head; 1st floor has 2 windows with C20 casements to No 32; 2 gabled dormers with 2-light leaded casements with iron opening casements to No 33. No 33 has full-height posts with middle rail and tension braces, panel to ground floor left end with rubble infill. Rear has catslide outshut with later alterations. Right return brick with 1st floor window. Probably originally outbuildings to No 28 Rother Street (q.v.).

(Forrest HE: *The Old Houses of Stratford-upon-Avon*: London: 1925-: 147-8).



34 Rother Street
(Ref No. 180 - Grade II)

List description : House, now shop. C17 with C20 alterations. Timber frame with brick infill on rubble plinth and brick front; tile roof. 2-storeys; single-window range. Top modillioned brick cornice. Entrance to right with C20 door. Window to ground floor has C20 oriel; 1st floor has window with C20 three-light casement. Left

return has exposed square framing, with tie beam and collar truss with yoke; C20 gabled projection with bay window and canopy, weatherboarded gable on timber posts. Rear has C20 rebuilt gabled wing, timber frame with brick infill and brick rear wall; single storey with attic; gabled dormers.

38 Rother Street (photo page 59)

Robert House and The Sports Shop
(Ref No. 181 - Grade II)

List description : Town house, now shop/dwelling. c1740, altered 1861. Colourwashed brick with ashlar dressings; tile roof with brick end stack and large rear stack. L-plan. 2 storeys and attic; 2-window range. Top modillioned timber cornice. Ground floor early C20 shop front with central recessed entrance with glazed door and top frieze and cornice carried over entrance to Robert House to left. 1st floor has two C19 canted bay windows with top friezes and cornices and 2:4:2-pane sashes; attic has gabled dormer with 2-light casement. 4 rubbed brick flat arches with keys to earlier sashes visible on first floor. Rear has 2 gabled wings, that to left is longer, with a large stack to left of ridge.

(Bearman R: *Stratford-upon-Avon: a history of its streets and buildings*: Nelson: 1988-: 48).

39 and 40 Rother Street
Retirement Security Ltd. (photo page 59)
(Ref No. 182 - Grade II)

List description : Two town houses, now office. C17 with c1800 refronting and late C20 alterations. Brick with rubble plinth and internal timber frame; tile roof with brick cross-axial stack. 2 storeys; 3-window range. Platt band over ground floor and top modillioned brick cornice. Segmental-headed entry to right end has plank door, entrance to left has C20 door, as has entrance to left end. Ground floor has 2 large windows flanking smaller one, all with late C20 glazing; 1st floor windows have 2-light C20 casements. Rear has catslide roof with exposed timber frame to single-pitch wing to right and entry passage to left; varied small-paned casements.

Interior: exposed chamfered beams.

(Bearman R: *Stratford-upon-Avon: a history of its streets and buildings*: Nelson: 1988-: 48).

41 Rother Street
Stantons Hair Stylist (photo page 59)
(Ref No. 183 - Grade II)

List description : Town house, now shop/dwelling. Probably C17 with 1831 refronting. Stucco with internal timber frame; tile roof with brick end stack. 2 storeys; (cont. over)

3-window range. Moulded plinth, high 1st floor sill band and plain eaves. Central entrance has Tuscan doorcase to C20 half-glazed door. Ground floor has early C20 windows: bay window to left has frieze and cornice, canvas canopy above; window to right has sill and plate glass with leaded top lights. 1st floor has small windows with 9-pane sashes flanking blind window. Rear has later C19 gabled wing with attached former stable; horizontally sliding sash and 2-light casement, both small-paned.

(Bearman R: *Stratford-upon-Avon: a history of its streets and buildings*: Nelson: 1988-: 48).



42 Rother Street (photo also page 59)
The Lamplighter Public House
 (Ref No. 184 - Grade II)

List description : Town house, now public house. C17 with 1799 refronting. Timber frame with brick infill and stuccoed brick front; slate roof with brick end stack. 3-unit plan. 2 storeys; 4-window range. Moulded plinth and plain eaves. Entrance to right of centre has architrave to 6-flush-panel door. Windows have sills, and 16-pane sashes, one to left end horned replacing carriage way; 9-pane sashes to 1st floor. Right return has exposed timber framing shewing raised front eaves; later rear additions. Rear has 2 gabled wings with later lean-to outshut to left return; former segmental-headed carriage entrance to right end and some windows with brick flat arches to 16-pane sashes.



Interior: ground floor opened up; chamfered beams. Once the Seven Stars Public House.

(Bearman R: *Stratford-upon-Avon: a history of its streets and buildings*: Nelson: 1988-: 48).

47 and 48 Rother Street (photo below, left)
Symphony Cottage (48)
 (Ref No. 185 - Grade II)

List description : Two town houses. Late C16 or C17 with later alterations. Timber frame with plaster infill; tile roof with brick rear stack; ground floor of left half, No 47, underbuilt in whitewashed brick. 2-unit plan. 2 storeys; 2-window range. End entrances with plank doors. Windows have 3-light small-paned casements, with iron opening casements to 1st floor. No 47 has moulded bressumer to formerly jettied 1st floor; square framing.

(Bearman R: *Stratford-upon-Avon: a history of its streets and buildings*: Nelson: 1988-: 48).

49 Rother Street
Tudor Cottage (photo below, centre)
 (Ref No. 186 - Grade II)

List description : Town house. Late C16 or C17 with C19 refronting. Stucco with internal timber frame; tile roof continuous with that to Nos 47 and 48 (q.v.) with brick rear stack. 2-unit plan. 2 storeys; 2-window range. Central entrance has architrave and cornice to 6-flush-panel door (2 glazed). Ground floor has window to left with 4-light casement; C19 canted bay window to right has frieze and cornice, and 2:4:2-pane sashes; 1st floor has windows with 2-light C18 casements, part small-paned. Left half has slight jetty to 1st floor. Rear gabled wing.

Interior noted as having some exposed timber framing and beams.

(Bearman R: *Stratford-upon-Avon: a history of its streets and buildings*: Nelson: 1988-: 48).

50, 51 and 52 Rother Street (photo below, right)
 (Ref No. 187 - Grade II)

List description : Terrace of 3 town houses.

c1830. Stuccoed brick slate roof with brick stack to rear of ridge and one to front of ridge. Double-depth plan. Georgian style. 2 storeys; 3-window range. Plain eaves. Entrances right end and to left of centre have doorcases with architraves, friezes and cornices, overlights, that to No 51 with margin lights, to 6-fielded-panel doors; entrance to left end, No 50, is similar but has doorcase with pilasters, frieze and consoled cornice, and overlight with margin lights. Windows have sills and 12-pane sashes.



58 and 59 Rother Street and attached wall and railings

(Ref No. 188 - Grade II)

List description : Pair of town houses, now hotel. 1836-40. Stuccoed brick; part-hipped slate roof with brick internal stacks. Double-depth plan. Georgian style. 3 storeys; 3-window range. 1st floor sill band and plain eaves. Entrance to left end has porch with cornice and overlight to 6-fielded-panel door; entrance to right of centre has blind overlight to 6-panel door. Ground floor has bay window with cornice and paired plate glass horned sashes; window to right end has sill and 6/9-pane sash. 1st floor has windows with 12-pane sashes; 2nd floor windows have sills. Entrance and 2-storey gabled wing to right; entrance has porch with decorative overlight to 3-fielded-panel door. Stuccoed garden wall and piers with stone coping and cast iron railings with decorative panels.

(Bearman R: *Stratford-upon-Avon: a history of its streets and buildings*: Nelson: 1988-: 49).

American Fountain

Rother Street (photo pages 10 and 59)
[Formerly listed as **American Drinking Fountain**]

(Ref No. 189 - Grade II)

List description : Shewn on OS map as Shakespeare Memorial Fountain. Clock tower incorporating horse troughs and drinking fountain. 1886-7. By Jethro Cossins of Birmingham; for George W Childs of the United States. Ashlar with Peterhead granite plinth. Square plan. Gothic style. 3-stage tower with conical spire. Lower stage has gabled diagonal buttresses capped with British Lion and American eagle holding shields: Royal arms and Stars and Stripes; arched recess to each



face has shafts and relief carved tympanum over inscription; to south: trefoil-headed entrance with strap hinges to plank door and flanking trefoil-headed recesses, once containing barometer and thermometer; to east and west: horse trough with dog bowl below; to north: drinking fountain. Middle stage has round pinnacles to angles, and weathered sills to triple pointed lights with shafts; dripcourses with beasts to ends. Top stage has gabled clock faces, the gables crocketed with fairies to pinnacles. Round base to spire has 4 round pinnacles to angles, spire with lucarnes, all with wrought iron finials. Erected to the memory of William Shakespeare, dedicated by the actor Henry Irving. An impressive monument at the north end of the Rother Street market place, said to be on the site of the medieval market cross.

(Bearman R: *Stratford-upon-Avon: a history of its streets and buildings*: Nelson: 1988-: 49; Jaggard G: *Stratford Mosaic*: London: 1960-: 60-67; Forrest HE: *The Old Houses of Stratford-upon-Avon*: London: 1925-: 147).

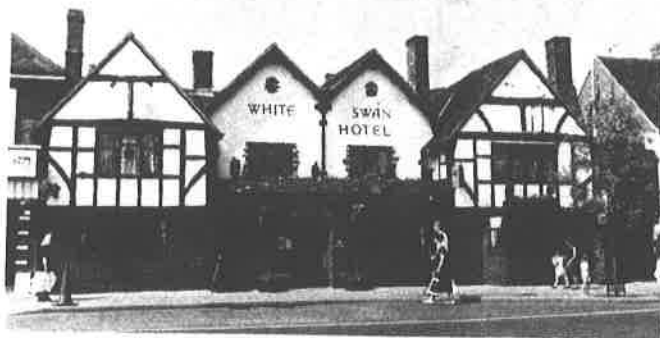
White Swan Hotel

(photo overleaf)

Rother Street

(Ref No. 190 - Grade II)

List description : Hotel. Mid C15 and later; completely remodelled and large back wing added in 1927. Timber frame with plaster infill



and brick; tile roof with brick return lateral and cross-axial stacks. Half-H plan, with single-storey infill. 2-storeys; 4-window range. Paired gables with flanking gabled wings. Brick ground floor with tile gabled coping to centre, timber-framed wings flank paired stuccoed gables. Entrance has segmental head and plank door. Windows have wooden mullions and leaded glazing: 2-light window to left and 4-light window to right of entrance, 5-light window to left end and 1:4:1-light canted bay window to right end. 1st floor has 3-light windows, and 4-light window to right end. Right return has some exposed timber framing and original external lateral stack with offset shaft; attached gateway with tile pointed arch and iron gates. Interior: chamfered beams and exposed timber framing; some original doorways with pointed or segmental heads. Wing to right has former jetty beam with mortises for 4+4-light window with diagonal mullions; late C16 panelling and chamfered stone Tudor-headed fireplace with overmantel with marquetry to 3 round-headed panels; part of an important series of late C16 mural paintings of scenes from the book of Tobit with foliage panels. Known as the King's House in 1560, owned by Robert Perrott, innkeeper, d 1589; it has been an inn for most of its history.

(*Buildings of England*: Pevsner N: *Warwickshire*: Harmondsworth: 1966-: 420; *Victoria County History* (offprint): Styles P: *The Borough of Stratford-upon-Avon and the Parish of Alveston*: London: 1946-: 13).

Ryland Street

7 and 8 Ryland Street (photo page 42) (Ref No. 191 - Grade II)

List description : Pair of houses. 1840. Builder: Joseph Holtom. Brick with-buff headers and stucco dressings; slate roof with brick cross-axial stack. Georgian style. 2 storeys; symmetrical 2-window range. Plain eaves. Entrance to each end has moulded doorcase with paterae and cornice to 2-fielded-and-2-flush-panel door and 4-fielded-panel door.

Windows have sills, and rusticated wedge lintels over 12-pane sashes, 9-pane sashes to 1st floor. Part of the early C19 development of the south part of Stratford.

(Information from Shakespeare Birthplace Trust Record Office).



11 and 12 Ryland Street (Ref No. 192 - Grade II)

List description : Pair of houses. 1841. Brick with buff headers and stucco dressings; slate roof with brick cross-axial stack. Georgian style. 2 storeys; symmetrical 2-window range. Top modillioned brick cornice. Entrance to each end has moulded doorcase with paterae and cornice to 4-fielded-panel door and C20 half-glazed door; central round-headed entry has blind fanlight over plank door. Windows have sills, and rusticated wedge lintels over 16-pane sashes, 4/8-pane sashes to 1st floor. Part of the early C19 development of the south part of Stratford.

(Information from Shakespeare Birthplace Trust Record Office).

26 and 27 Ryland Street (photo page 45) (Ref No. 193 - Grade II)

List description : Pair of houses. c1851. Brick with stucco dressings; fishscale tile roof with brick end stacks. Tudor style. 2 storeys; symmetrical 2-window range. Platt band over ground floor and pilasters flanking 1st floor windows; top modillioned brick cornice. Pair of Tudor-headed entrances have hood moulds over C20 door and 4-panel door. Windows have offset sills, and lintels with label moulds over 2-light small-paned casements with margin lights. An unusual example of the Tudor style in an area of Georgian style houses. Part of the early C19 development of the south part of Stratford.

(Information from Shakespeare Birthplace Trust Record Office).

28 Ryland Street
(Ref No. 194 - Grade II)

List description :

Includes: No 13 New Street.

Pair of houses. 1861. Builder: Thomas Hewins. Brick with buff headers and stucco dressings; slate roof with brick end stacks and cross-axial stack. Georgian style. 2 storeys; 3-window range. Top brick cornice. Elliptical-headed entry to left end has plank door; entrance to its right has moulded doorcase with cornice to 4-panel door. Windows have sills, and rusticated wedge lintels with keys over 12-pane sashes. Right return to New Street has brick eaves. Central entrance with frieze and consoled cornice, stained-glass overlight to one-fielded-and-one-flush-panel door. Blind windows to ground and 1st floors, but central 1st floor window has 2-light small-paned casement and attic has 2 segmental-headed windows with small-paned casements. Part of the early C19 development of the south part of Stratford.

(Information from Shakespeare Birthplace Trust Record Office).

Sanctus Street



1-4 Sanctus Street and attached railings
(Ref No. 195 - Grade II)

List description : Terrace of 4 houses. 1859-60. Builder: William Holtom. Painted brick with stucco dressings; slate roof with brick stop-chamfered end stacks and cross-axial stack. Georgian style. 2 storeys; symmetrical 8-window range. Top timber entablature. 2 pairs of entrances have doorcases with friezes and consoled cornices, plain overlights to 4-flush-panel doors. 2-storey canted bay windows with consoled cornices to ground floor and 4:16:4-pane sashes; windows over entrances have sills and 12-pane sashes. Some surviving railings to right end of front area. Rear has 2 wings. A good well preserved example of mid C19 houses. Part of the early C19 development of the south part of Stratford.

(Information from Shakespeare Birthplace Trust Record Office).

Shakespeare Street

2-6 Shakespeare Street
(Ref No. 196 - Grade II)

(photo page 33)

List description : Terrace of 5 houses. 1840s. Brick with buff headers and stucco dressings; slate roof with 4 brick cross-axial stacks. Georgian style. 2 storeys; symmetrical 5-window range. Top brick cornice. Entrances, alternating with windows, have moulded doorcases with paterae and cornices, overlights with margin lights to 6-flush-panel doors; entry to right of centre with blind overlight; but entrance to No 2 has C20 glazed door and fanlight, that to No 5 has C20 half-glazed door and plain overlight, that to No 6 has half-glazed door. Windows have sills, and rusticated wedge lintels with keys over 16-pane sashes; but No 2 has C20 casements, No 5 has 4-pane horned sashes, and No 6 has C20 casements. Part of the early C19 development of the north part of Stratford, known as New Town.

(Information from Shakespeare Birthplace Trust Record Office).



7 and 8 Shakespeare Street (photo above, left)
(Ref No. 197 - Grade II)

List description : Pair of houses. 1836-7. Brick with buff headers and stucco dressings; slate roof with brick end stacks. Georgian style. 2 storeys; symmetrical 3-window range. Top brick cornice. Round-headed entrances and entry to centre have blind fanlights and C20 doors, the entry with plank door. Ground floor has canted bay window with cornices over plate glass shop window to No 7 and 4:12:4-pane sashes to No 8. Windows to 1st floor have sills, and rusticated wedge lintels over 12-pane sashes. Part of the early C19 development of the north part of Stratford, known as New Town.

(Information from Shakespeare Birthplace Trust Record Office).

9 and 10 Shakespeare Street (photo page 149, with 7 and 8 Shakespeare Street, right)

(Ref No. 198 - Grade II)

List description : Pair of houses. 1836-7. Brick with buff headers and stucco dressings; slate roof with brick end stacks. Georgian style. 2 storeys; symmetrical 3-window range. Top brick cornice. Round-headed entrances and entry to centre have blind fanlights and C20 doors, the entry with plank door. Ground floor has bay windows with cornices over small-paned glazing to No 9 and similar C20 glazing to No 10. Windows to 1st floor have sills, and rusticated wedge lintels over 12-pane sashes, but right end window has C20 casement. Part of the early C19 development of the north part of Stratford, known as New Town.

(Information from Shakespeare Birthplace Trust Record Office).



19 and 20 Shakespeare Street

(Ref No. 199 - Grade II)

List description : Pair of houses. Probably late 1830s. Brick with buff headers and stucco dressings; slate roof with brick end stacks. Georgian style. 2 storeys; symmetrical 3-window range. Plain eaves. Round-headed entry to centre has blind fanlight and plank door; flanking entrances have moulded doorcases with paterae and 6-fielded-panel doors, that to No 19 with glazed top panel. Windows have sills, those to ground floor with rusticated wedge lintels and keys, over 12-pane sashes. Part of the early C19 development of the north part of Stratford, known as New Town.

35-38 Shakespeare Street (photo right, left)
(Ref No. 200 - Grade II)

List description : Terrace of 4 houses. 1836-7. Brick with buff headers and stucco dressings; slate roof with 2 brick cross-axial stacks. Georgian style. 2 storeys; 8-window range. Plain eaves. Entrances have brick flat arches with stucco keys, Nos 35 and 36 with C20 door, No 37 with 4-panel door, No 38 and entry to right end with 6-flush-panel doors. Windows have sills, with brick flat arches and stucco keys over



16-pane sashes, and 9-pane sashes to 1st floor; No 35 has C20 small-paned casements. Good central rainwater head. Part of the early C19 development of the north part of Stratford, known as New Town.

(Information from Shakespeare Birthplace Trust Record Office).

39-42 Shakespeare Street (photo above, right)
(Ref No. 201 - Grade II)

List description : Terrace of 4 houses. 1840-1. Brick with buff headers and stucco dressings; slate roof with 2 brick cross-axial stacks. Georgian style. 2 storeys; 7-window range, with canted angle to corner with Mulberry Street. Top brick cornice. Entrances have brick flat arches with stucco keys, No 38 with 6-flush-panel door, Nos 39 and 40 with C20 door; No 42 has entrance to angle, with timber doorcase and C20 door; stucco panel above with traces of painted shop sign. Windows have sills, with brick flat arches and stucco keys over 16-pane sashes, and 9-pane sashes to 1st floor; No 38 has blind window over entrance; No 42 has bowed window to ground floor, with frieze and cornice over small-paned glazing. Right return has bow window with blind window above and altered windows to right end, end stack and attached 2-storey outhouse. Part of the early C19 development of the north part of Stratford, known as New Town.

(Information from Shakespeare Birthplace Trust Record Office).

54 and 55 Shakespeare Street

(photo opposite, left)

(Ref No. 202 - Grade II)

List description : Pair of houses. 1836-7. Brick with buff headers and stucco dressings; slate roof with brick end stacks. Georgian style. 2 storeys; symmetrical 4-window range. Top brick cornice. Round-headed entrances and entry to centre have blind fanlights with faint radial glazing-bar pattern, No 54 with 4-flush-panel door, plank door to entry and C20 half-glazed door to No 55. Canted bay windows to ground floor have cornices over 4:12:4-pane sashes,



that to No 55 altered; windows to 1st floor have sills, with rusticated wedge lintels over 12-pane sashes. Part of the early C19 development of the north part of Stratford, known as New Town. (Information from Shakespeare Birthplace Trust Record Office).

56 and 57 Shakespeare Street

(photo above, centre)

(Ref No. 203 - Grade II)

List description : Pair of houses. 1836-7. Brick with buff headers and stucco dressings; slate roof with brick end stacks. Georgian style. 2 storeys; symmetrical 4-window range. Top brick cornice. Round-headed entrances and entry to centre have blind fanlights with faint radial glazing-bar pattern, 4-flush-panel doors, and plank door to entry. Canted bay windows to ground floor have cornices over 4:12:4-pane sashes; windows to 1st floor have sills, with rusticated wedge lintels over 12-pane sashes. Part of the early C19 development of the north part of Stratford, known as New Town.

(Information from Shakespeare Birthplace Trust Record Office)

58 and 59 Shakespeare Street

(photo above, right)

(Ref No. 204 - Grade II)

List description : Pair of houses. 1863-4. Builder: William Holtom. Brick with buff headers and stucco dressings; slate roof with brick stop-chamfered end stacks. Georgian style. 2 storeys; symmetrical 3-window range. Top cornice. Segmental-headed entry with C20 door and flanking entrances with friezes and consoled cornices over C20 doors. Windows have sills, with wedge lintels and keys over 4-pane sashes, margin lights to central 1st floor window. Part of the early C19 development of the north part of Stratford, known as New Town.

(Information from Shakespeare Birthplace Trust Record Office).

60 Shakespeare Street (see 1 Guild Street, One Elm Inn)

(Ref No. 92 - Grade II)

Sheep Street

1 Sheep Street (photo overleaf, far right)

(Ref No. 205 - Grade II)

List description : Town house. Probably C17 with c1800 refronting. Stuccoed brick with internal timber frame; tile roof hipped to right with large brick stack to right return. 2 storeys and attic; single-window range. Plain plinth, platt band over ground floor and top modillioned brick cornice. Segmental-headed entrance has archivolt with impostes and key over half-glazed panelled door. Windows have sills and 16-pane sashes, that to ground floor in wide moulded frame. Right return has C20 addition to right of ground floor window with 4-pane horned sash and 1st floor window with 3-light pegged casement; 2 gabled dormers with 2-light casements flank stack. Left return has partly exposed roof truss. Plaque records the 1st borough police station here 1836-89.

(Bearman R: *Stratford-upon-Avon: a history of its streets and buildings*: Nelson: 1988-: 51).

2 Sheep Street

(photo overleaf, right)

(Ref No. 206 - Grade II)

List description : Town house, now offices. Late C15 or early C16, with later alterations. Timber frame and stucco; tile roof with 2 brick rear stacks. 2 storeys; 2-window range. Stucco ground floor; jettied 1st floor on curved braces and joist ends; timber top cornice. Entrance to right of centre has plank door. 5- and 3-light transomed windows to ground floor have leaded glazing and applied timber-framed aprons; 1st floor has 3-light gabled half-dormers split by cornice. Gabled rear wings.

Interior noted as having exposed timber framing and chamfered beams.

(Bearman R: *Stratford-upon-Avon: a history of its streets and buildings*: Nelson: 1988-: 51).

3 Sheep Street

Loxleys

(photo overleaf, centre)

(Ref No. 207 - Grade II)

List description : Town house, now shop/dwelling. Late C16 or early C17, with c1800 refronting. Colourwashed brick front to internal timber frame; slate roof with brick rear lateral stack. 2 storeys; 2-window range. Top cornice. Entrance has half-glazed panelled door; entry to right end has plank door with grille above; 2 canted bays with plate glass flank entrance, all under corniced roof and bracketed horizontal iron bar. 1st floor has windows with sills and 16-pane sashes. Good enriched early C20 sign and wrought iron bracket with shepherd, sheep etc.

Interior: exposed beams and close-studded walls; corner cupboard with reeded (cont. over)



pilasters, frieze and cornice, and fielded-panel door.

(Bearman R: *Stratford-upon-Avon: a history of its streets and buildings*: Nelson: 1988-: 51).

4 Sheep Street (photo above, left)

The Vintner (formerly Antique Arcade)

[Formerly listed as 4 Sheep Street, Shakespeare Press]

(Ref No. 208 - Grade II)

List description : Town house, now shop. Tie beam with black letter: BUILT c1490, probably C16; bargeboards with: RESTORED 1910: BY WILLIAM JAGGARD. Timber frame front with plaster infill and some brick; much remaining internal timber frame; fishscale tile roof with brick rear stack. 2 storeys; single-window range. Small brick section with top modillioned brick cornice and larger timber-framed projection to left. Entrance to right has small-pane half-glazed door. Ground floor has large 5-light transomed window with upper leaded glazing and grille below; 1st floor has late C20 three-light window with 2 transoms replacing sash, and small leaded window to gablet.

Interior: chamfered beams; 1st floor has roof trusses with close-studded infill; rear has 2 altered roof trusses to rear wing, now enclosed in larger wing, on wall posts. A plaque, now removed, stated that a press was founded here 1591, and that the 1st edition of Shakespeare's works was published here 1623. William Jaggard, the bibliographer of Shakespeare and said to be the descendant of the publisher of the 1st folio, lived here late C19 onwards and set up the Shakespeare Press.

(Victoria County History (offprint): Styles P: *The Borough of Stratford-upon-Avon and the Parish of Alveston*: London: 1946-: 13, Forrest H E: *The Old Houses of Stratford-upon-Avon*: London: 1925-: 84).

5 Sheep Street

The Vintner

(photo above, far left)

(Ref No. 209 - Grade II)

List description : Town house, now restaurant. Late C16 or early C17, refronted early C19. Colourwashed brick to internal timber frame; tile roof. 2 storeys; single-window range. Entrance with half-glazed door to right of small-paned bay window both under hipped tile roof. 1st floor window with 3-light leaded casement. Left return has timber-framed gable with bracket. C20 rear wing.

Interior: chamfered beams and exposed roof trusses with close-studded infill.

(Bearman R: *Stratford-upon-Avon: a history of its streets and buildings*: Nelson: 1988-: 51)



8 and 9 Sheep Street (photo also page 53)

(Ref No. 210 - Grade II)

List description : Town house, now shop. c1800 or possibly earlier. Painted brick; slate roof.

Double-depth plan. Georgian style. 2 storeys with attic; 3-window range. Platt band over ground floor; top modillioned brick cornice with central pedimental gable, one of a number in the town. Segmental-headed entrance to left end has 4-flush-panel door in heavy pegged frame; C20 shop front to right. 1st floor has segmental-headed windows with keys over 12-pane sashes in wide frames; lunette window to gable has key over 3-light leaded glazing.

(Bearman R: *Stratford-upon-Avon: a history of its streets and buildings*: Nelson: 1988-: 51).

10, 11 and 12 Sheep Street

(photo below, centre and right; also page 53)

(Ref No. 211 - Grade II)

List description : Town house now shop, restaurant and office. C16 or early C17 with later alterations. Timber frame with plaster infill; tile roof with brick rear stacks. 3-unit and cross-wing plan. 2 storeys plus attic; 3-window range. Cross wing to left end, to left of carriage entrance. Late C19 shop front to right end has paired glazed doors with plate glass window to left, flanking canted oriels with leaded upper lights, and entrance with glazed door to right end, all under tile pentice; entrance to left of shop front has architrave, frieze and cornice, overlight with margin lights to half-glazed door. Wing has ground floor lean-to projection with segmental-headed entrance with studded wide-board door to right of large 3-light shop window. 1st floor has 2 windows with 3-light casements, one leaded, one small-paned, both flanked by smaller 2-light leaded windows, probably original; wing has similar 3-light oriel with small 2-light flanking windows. Attic has 3

hipped dormers with 2-light leaded casements. C18 rainwater head to left end. Rear has gabled wings.

Interior: No 12 (Bobby Brown's Restaurant) has exposed framing and framed fireplace.

(Bearman R: *Stratford-upon-Avon: a history of its streets and buildings*: Nelson: 1988-: 51).

13 and 14 Sheep Street

(photo below, left; also page 53)

(Ref No. 212 - Grade II)

List description : Town house now shops/dwelling. c1800 refronting of possibly C17 building. Whitewashed brick with some internal timber framing; slate roof, but No 14 has C20 pantile roof; brick axial stack and wide end stack. Georgian style. 3 storeys; 3-window range. Top modillioned brick cornice. Round-headed entry to left of centre has wide-board door; No 13 has entrance with half-glazed door, plate glass bay window to left with bull's eye upper lights, and window to right, probably former entrance; No 14 has entrance to left of oriel. 1st floor has windows with sills, and rubbed brick flat arches over 12-pane sashes flanking blind window; and 2nd floor windows have sills, and 6-pane sashes flanking blind window.

Interior has some exposed timber framing and chamfered beams; No 13 has fireplace.

15, 16 and 17 Sheep Street (photo page 53)

The Rose and Crown Public House

(Ref No. 213 - Grade II)

List description : Town house, now public house. Early C17 with early C20 refronting. Timber frame with brick plinth to front and brick rear



range; tile roof with brick stacks. 2 storeys with attic; 4-window range. Jettied and gabled 1st floor projections to left of centre and to right end, that to left of centre has carriage entrance with paired battened gates. Windows to ground floor have wooden mullions and transoms: cross-mullioned window to left end, 3-light window and 4-light bay window; 1st floor has 3-light casements, one cross-casement to left end; attic has hipped dormer and window to gable to left, both with 2-light casements; all windows have leaded glazing. Rich scrolly wrought iron sign bracket

Interior has some chamfered beams and exposed timber framing. Deeds go back to 1683.

(Bearman R: *Stratford-upon-Avon: a history of its streets and buildings*: Nelson: 1988-: 52).



18 Sheep Street

Stratford House Hotel (photo above, right)
(Ref No. 214 - Grade II)

List description : Town house, now hotel. 1774-9. Brick with buff headers and ashlar dressings; tile roof with brick end stacks. Georgian style. 2 storeys; 2-window range. Plaster plinth; platt bands and quoins; top timber frieze and cornice; stone-coped gables with kneelers. Entrance to left of centre has pilasters and consoled cornice to 6-fielded-panel door, round-headed entry to right end. Ground floor has window to left of entrance with bracketed sill, eared architrave with key and 12-pane sash; canted bay window to right of entrance has 4:16:4-pane sashes. 1st floor has windows similar to ground floor left, but with triple keys over 4:16:4-pane tripartite sashes; attic has 2 hipped dormers with 2-light leaded casements. Altered rear wing.

(Bearman R: *Stratford-upon-Avon: a history of its streets and buildings*: Nelson: 1988-: 51).

19 Sheep Street (photo above, left)
(Ref No. 215 - Grade II)

List description : Town house, now shop/dwelling. c1810 with C20 alterations. Brick with buff headers, tile roof with brick end stack.

Georgian style. 2 storeys; 3-window range. Top modillioned brick cornice. Large projecting C20 shop front with central entrance; round-headed entrance to left end has doorcase with reeded pilasters, entablature blocks and open pediment, fanlight with radial glazing bars over 6-flush-panel door. 1st floor has windows with rubbed brick cambered arches over 12-pane sashes, with small inserted window to right of central window, which has fire mark above.

Interior has winding staircase to end, with cut string and stick balusters; elliptical-headed doorway to right.

(Bearman R: *Stratford-upon-Avon: a history of its streets and buildings*: Nelson: 1988-: 51).



24 and 25 Sheep Street

(Ref No. 216 - Grade II)

List description : Town house, now 2 offices. C16 or early C17 with C20 alterations. Timber frame with plaster infill; tile roof. 2 storeys; 3-window range; the jettied upper storey largely underbuilt. Ground floor has plaster plinth to small-paned shop windows: No 24 has 2 bay windows with flanking lights flanking entrance with glazed door; No 25 has large entrance recess with door to entry. 1st floor has C20 leaded casements: gabled 4-light canted oriel to left end and 4-light window to right end; small central light. Storey-height posts with middle rail and some braces.

Interior: broadly chamfered beams and exposed timber framing.

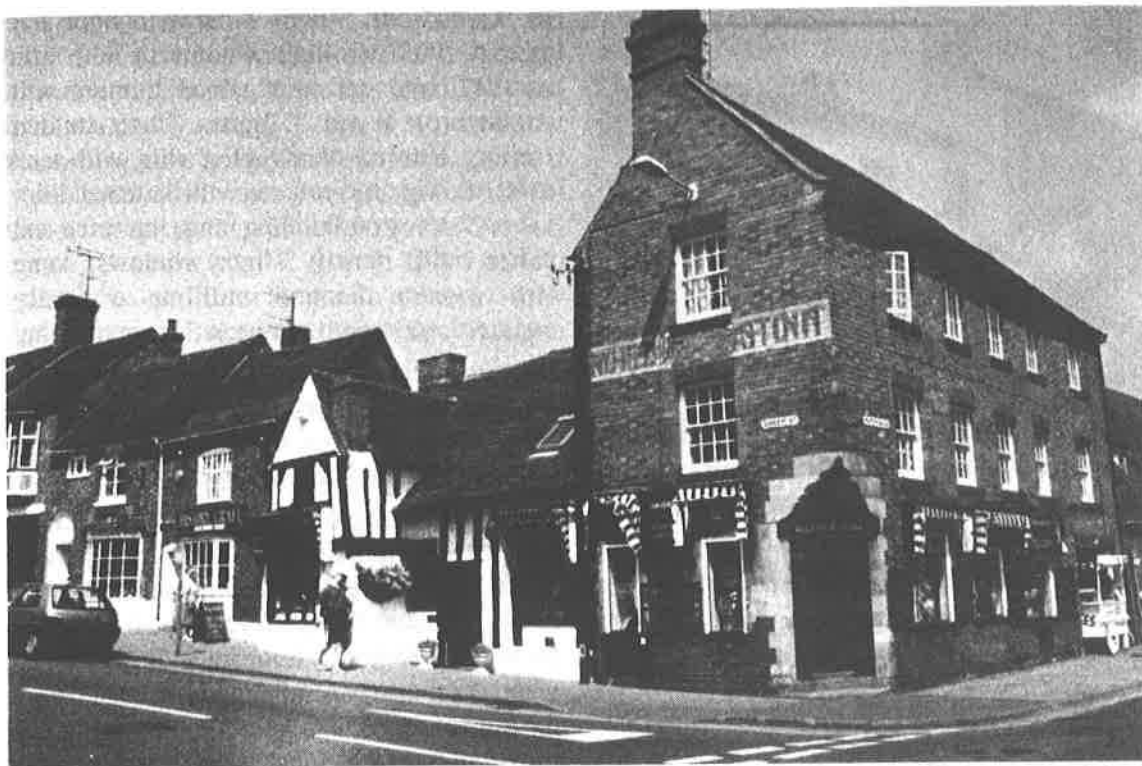
(Bearman R: *Stratford-upon-Avon: a history of its streets and buildings*: Nelson: 1988-: 51).

30 Sheep Street (photo opposite, right)
(Ref No. 217 - Grade II)

List description :

Includes: No 20 Waterside.

House, now shop and flat. C17 refronted c1800 with later 2nd floor. Brick with some internal timber frame; tile roof with brick end stack.



Gable facing, front to right: Waterside. 3 storeys; 5-window range. Top brick cornice. Canted angle entrance with rich ashlar moulding above paired half-glazed doors. 3 shop windows and carriage entrance to right end, which has wrought iron gates. Windows to upper floors have brick sills, and brick flat arches over 16-pane horned sashes to 1st floor, 2-light small-paned casements to 2nd floor. Left return to Sheep Street similar; remains of painted sign: WHEAT[SHE]AF INN; 2 shop windows in ashlar surrounds with frieze and dripstone; left angle has wall post to ground and 1st floors.

Interior: broadly chamfered beams to ground floor and some exposed framing to rear wall to ground floor; 1st floor noted as having braced tie beam. From the 1880s a public house: The Wheatsheaf. Included for group value.

(Bearman R: *Stratford-upon-Avon: a history of its streets and buildings*: Nelson: 1988-: 56).

31 Sheep Street (photo above, centre) (Ref No. 218 - Grade II)

List description : Town house, now shop. Probably late C15 with later alterations. Timber frame with some plastered brick; tile roof with brick stacks. Single-storey with cross-wing and later rear wing. Entrance with C20 door and flanking windows; wing has windows with C20 frames. Lateral stack to wing and tall stack to rear of ridge. Rear wing has C19 lantern with pyramidal roof. Some close-studded framing and framing to 1st floor of wing. Left return has exposed framing.

Interior has chamfered beams and some exposed framing.

(Bearman R: *Stratford-upon-Avon: a history of its streets and buildings*: Nelson: 1988-: 51).

32 and 33 Sheep Street (photo above, left) (Ref No. 219 - Grade II)

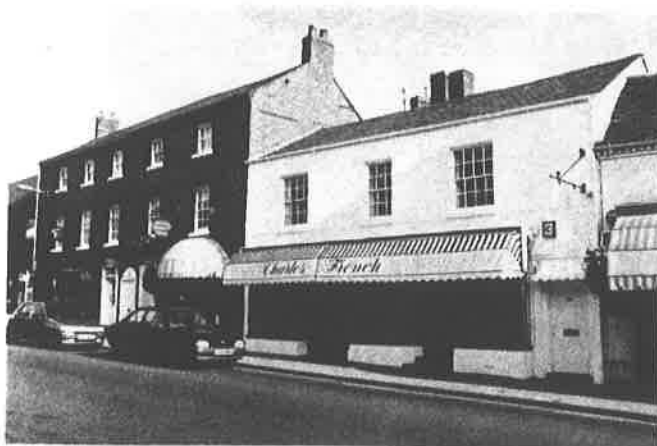
List description : Two town houses, now shop/dwelling. C16 or early C17 with c1800 refronting. Brick with buff headers and internal timber frame; tile roofs with break to centre, brick stacks to rear wings. 2 storeys; 2-window range. Top modillioned brick cornice to No 32 to right. No 32 has segmental-headed entrance with C19 bell pull to left of canted bay window with small-paned glazing; segmental-headed 1st floor window with 3-light small-paned casement with iron opening casement. No 33 has round-headed entrance with tympanum over C20 plank door, now leading to flat, to left of bow window with frieze and cornice over small-paned glazing; 1st floor has window with sill and cross-casement with small high window to left. Right return has small addition with shop window and some exposed framing: wall post head, tie beam, brace and part of principal.

Interior has some chamfered beams and partition wall with infill removed.

(Bearman R: *Stratford-upon-Avon: a history of its streets and buildings*: Nelson: 1988-: 51).

36 Sheep Street (photo overleaf, right) (Ref No. 220 - Grade II)

List description : Town house, now shop. Probably C17 with c1800 alterations and refronting. Timber frame with stuccoed brick front; slate roof with brick rear stacks. 2 storeys; 3-window range. Large C20 shop front has entrance to right with 6-fielded-panel door. 1st



floor has windows with sills, 16-pane sashes flanking 12-pane sash. Wrought iron sign bracket to right end.

Interior: some exposed chamfered beams.

(Bearman R: *Stratford-upon-Avon: a history of its streets and buildings*: Nelson: 1988-: 51).

37 and 38 Sheep Street (photo above, left)
(Ref No. 221 - Grade II)

List description : Two town houses, now shops/dwellings. 1818-19 with later alterations. Brick; slate roof with brick end stacks. Georgian style. 3 storeys; 5-window range. Top modillioned brick cornice. Round-headed entry to right of centre has architrave to 6-fielded-panel door and has flanking entrances with doorcases with fluted pilasters and bracketed open pediments, overlights with decorative glazing bars to half-glazed door and 6-flush-panel door. 2 large C20 bow windows with small-paned glazing to ends. Upper floors have windows with sills, and rubbed brick flat arches over 12-pane sashes, 6-pane sashes to 2nd floor. Right return has some timber beams incorporated.

(Bearman R: *Stratford-upon-Avon: a history of its streets and buildings*: Nelson: 1988-: 51).

40 Sheep Street

The Shrieve's House (photo pages 8 and 53)
(Ref No. 222 - Grade II*)

List description : Yeoman's house, with rear outbuildings now shop. Front range probably rebuilt on old plan after 1614 fire, outbuildings rebuilt after 1595 fire; restored 1908, 1947 by F Yorke and 1979 by S A Wright. Timber frame with plaster infill on coursed rubble plinth; tile roof with brick rear stack. 2 storeys with attic; 3 irregular bays; 1st floor jettied on carved brackets. Entrance to left end is a later feature, triangular head with leaded lights above and studded door with strap hinges and enriched iron handle; 1st floor raised over large carriage entrance to right end which has paired battened plank doors. Ground floor has 1:3:1-light canted oriel, originally bay window; similar oriel above

has hipped roof, 3-light window to right and inserted 1908 two-light window to left; attic has 1947 large and small gabled dormers with windows of 4 and 3 lights. Close-studded framing. Rear has short gabled wing with stack to left of ridge and entrance with battened door. Lower 2-storey outbuilding range has brick and plaster infill; mostly 3-light windows, some with wooden diamond mullions originally unglazed, and varied entrances. Square framing. Interior: well preserved with C17 staircase with splat balusters and square newels with finials; stud partitions and ex-situ panelling and doors brought from another house c1947.

The house belonged to the Guild of Holy Cross, later to the Corporation; it became known in the C20 as the Shrieve's House from its 1st recorded tenant, William Sheryve, 1542; also inhabited by William Rogers, a Sergeant at the Mace, for whom the house was rebuilt and enlarged after the fire of 1595, and John Woolmer, the 1st Mayor of Stratford, 1664. A good example of a late C16 or early C17 yeoman's house retaining its range of outbuildings.

(Bearman R: *Stratford-upon-Avon: a history of its streets and buildings*: Nelson: 1988-: 51; *Stratford-upon-Avon Papers*: Ree P: *The Shrieve's House Stratford-upon-Avon*: Stratford-upon-Avon: 1987-).



42 Sheep Street

[Formerly listed as 41 and 42 Sheep Street]
(Ref No. 223 - Grade II)

List description : Town house, now surgery. c1600. Timber frame with plaster infill; tile roof with brick end stacks. 2 storeys plus attic; 2-window range; the upper storey jettied. Pair of early C19 entrances to centre, one blocked to right, the other with leaded overlight to 6-panel door; Tudor-headed entry to left end has unglazed overlight, carved spandrels and plank

door with strap hinges. C19 windows to ground floor, to left a 1:3:1-light bay window with transom and leaded glazing; to right a canted bay window with leaded upper lights and frieze and cornice. 1st floor has 3-light casements each with small flanking 2-light windows, probably original; attic has 3-light windows in gables; all windows with leaded glazing. Good late C19 rainwater head. Large C20 rear wing. Interior: some chamfered beams. At one time divided into 2 houses.

(Bearman R: *Stratford-upon-Avon: a history of its streets and buildings*: Nelson: 1988-: 51).



46 Sheep Street
Bancroft House
(Ref No. 224 - Grade II)

List description : Town house, now office. C16 or early C17, much restored. Timber frame with plaster infill; tile roof with stone and brick rear stack. 2 storeys plus attic; 3-window range. Entrance has bracketed pentice with fishscale tiles and C20 door; similar late C19 bay window with small-paned upper lights with similarly glazed windows to ends. 1st floor has 2-light windows continued as small gabled dormers above wide transoms to eaves levels. Square framing and moulded bargeboards. Exposed square framing to left return. Rear has C20 single-storey flat-roofed addition and external stone and brick lateral stack.

Interior: ground floor has exposed framing and stud wall with infill removed; fireplace with bressumer to rear.

(Bearman R: *Stratford-upon-Avon: a history of its streets and buildings*: Nelson: 1988-: 51).

Southern Lane

63 Southern Lane
Old Ferry House
(Ref No. 226 - Grade II)

List description : Town house. 1792-4 with C19 alterations. For Edward Easthope, a barge-master. Brick with buff headers and ashlar



dressings; slate roof, some tile, with coping and brick end stacks. L-plan. Georgian style. 3 storeys; symmetrical 3-window range. Top modillioned brick cornice. Round-headed entrance has architrave and consoled open pediment, fanlight with decorative glazing bars over 4-flush-panel door. Windows to ground floor have sills, and-rubbed brick flat arches with triple keys over 4:12:4-pane tripartite sashes; 1st floor has 2 C19 canted oriels with cornices over 2:4:2-pane sashes flanking window with rubbed brick flat arch with triple key over 12-pane sash; 2nd floor has windows with 4/8-pane sashes flanking one with 9-pane sash. Left return has rear wing with tile roof and early C20 bay window with leaded casements.

(Bearman R: *Stratford-upon-Avon: a history of its streets and buildings*: Nelson: 1988-: 56).



Former Barn approx. 22m south-west of Old Ferry House
Southern Lane
(Ref No. 227 - Grade II)

List description : Barn, now part of the buildings of The Other Place. C16 or early C17 with later alterations. Timber frame with brick infill, some stone to plinth; partly-renewed tile roof. Gable facing, front to left. 2-storey structure with blocked central entrance and varied fenestration with C20 leaded casements. Square framing with tension braces. Returns are faced in brick: right return has lower gabled addition; left return has timber lean-to verandah. Earlier in the century it was used by a tennis club and has recently been taken over by the Royal