



STRATFORD-ON-AVON DISTRICT COUNCIL

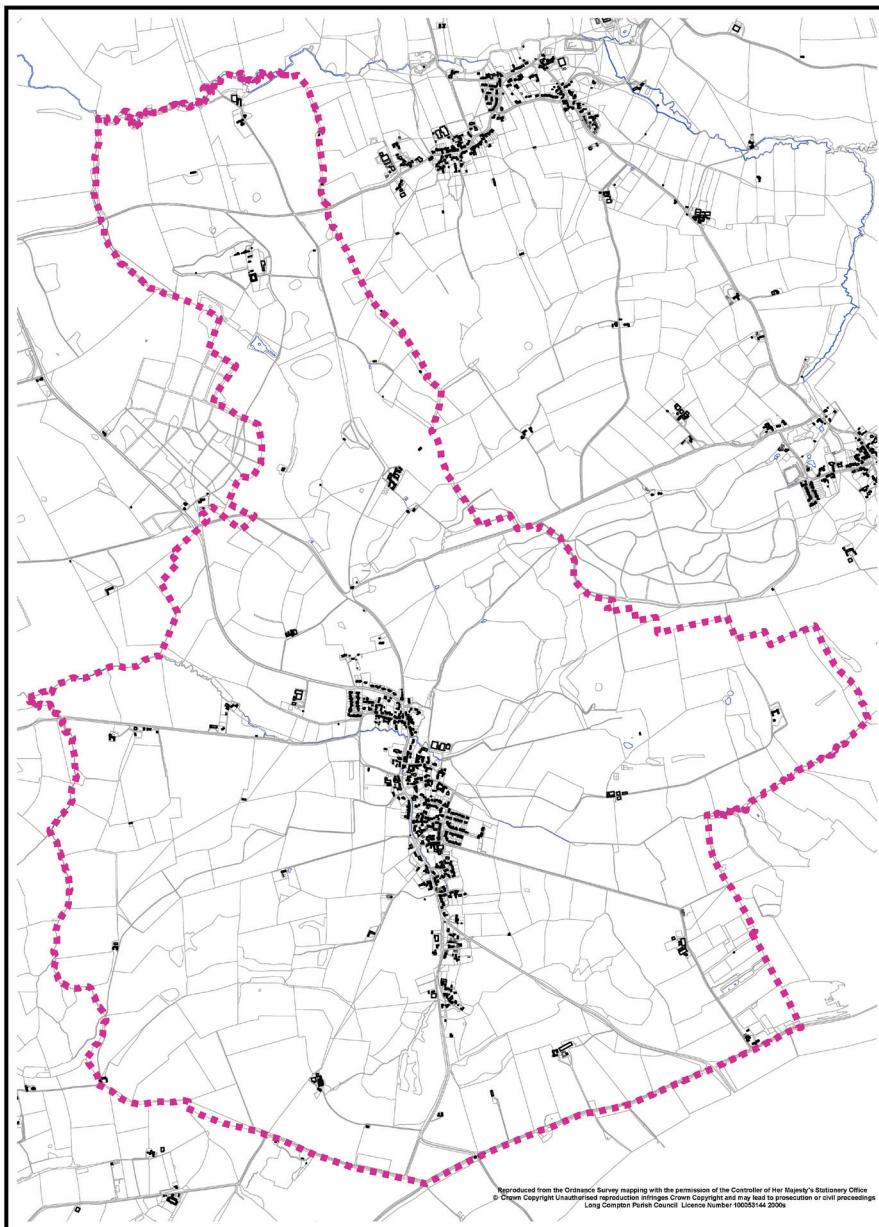
TOWN AND COUNTRY PLANNING ACT 1990

NEIGHBOURHOOD PLANNING (GENERAL)

PLANNING REGULATIONS 2012 (AS AMENDED)

Long Compton Neighbourhood Development Plan Consultation

Notice is given that Long Compton Parish Council as the Qualifying Body has prepared a neighbourhood development plan entitled the 'Long Compton Neighbourhood Development Plan 2014-2031' for their Parish with the help of the local community. The plan sets out a vision for the future of the Parish and planning policies which will be used to determine planning applications locally. In accordance with Regulation 16 of Part 5 of The Neighbourhood Planning (General) Regulations 2012 (as amended), the Local Planning Authority must publicise the draft plan for a minimum 6 week period inviting representations on the plan.



Long Compton Parish Boundary

Reproduced from the Ordnance Survey mapping with the permission of the Controller of Her Majesty's Stationery Office. © Crown Copyright. Unauthorised reproduction infringes Crown Copyright and may lead to prosecution or civil proceedings. Long Compton Parish Council. Licence number 10059144. 2009.

A copy of the Draft Plan and associated documentation can be viewed on the Council website at www.stratford.gov.uk/longcompnp or at Stratford-on-Avon District Council's offices, Elizabeth House, Church Street, Stratford-upon-Avon, and Stratford-upon-Avon and Shipston-on-Stour libraries during normal opening hours.

The consultation starts on Thursday 11th June 2015. Representations on the draft Plan may be made to the Council by no later than 5pm on Friday 24th July 2015.

You are encouraged to submit your representations electronically. This can be done either by using the on-line form on the website at www.stratford.gov.uk/longcompnp or by attaching a form to an email and sending it to planning.policy@stratford-dc.gov.uk

If you want to post your response, please send it to
FREEPOST RTJX-GHEE-ZUCS
Stratford-on-Avon District Council
Consultation Unit
Elizabeth House, Church Street
Stratford-upon-Avon, CV37 6BR

Dave Nash
Policy Manager
(Planning and Housing)
Dated 11th June 2015



WWW.STRATFORD.GOV.UK