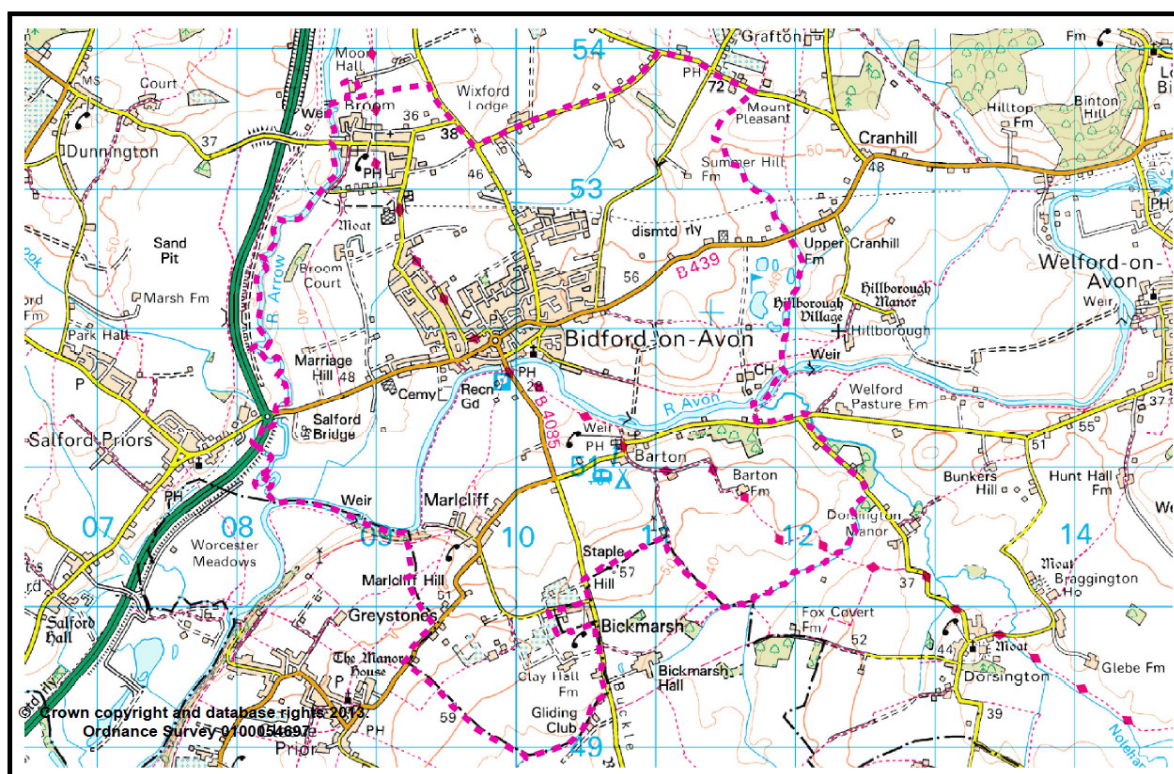


# Bidford-on-Avon NDP Consultation Statement June 2016



### CONTENTS

1. Introduction	Page 3
2. Background	Page 5
3. Neighbourhood Plan Parish Survey	Page 6
4. Consultations – Non-Statutory and Statutory	Page 8
5. Legislative Basis	Page 11
6. Consultation Statement	Page 12
7. Conclusion	Page 16

### APPENDICES

#### Appendix 1

- Details of the persons or bodies consulted and how they were consulted

#### Appendix 2

- Parish questionnaire (December 2014)
- Business questionnaire results (January 2015)
- Household questionnaire results (January 2015)
- Analysis of site allocations
- Minutes of meeting 03.03.15 when results were considered

#### Appendix 3

- Consultation on draft policies (25.05.15 – 06.07.15)
- Responses to consultation on draft policies (May 2015)
- Minutes of meeting 09.07.15
- Minutes of meeting 29.07.15

#### Appendix 4

- Pre-submission Draft Policy Consultation (24.09.15 - 06.11.15)
- Press advertisement (24.09.2015)
- Summary of third party comments and responses
- Summary of SDC comments and responses

### 1. INTRODUCTION - COMPLIANCE WITH REGULATION 15 (Neighbourhood Planning Regulations 2012)

Bidford-on-Avon Parish council submits its Neighbourhoods Development Plan to Stratford-on-Avon District Council, its Local Planning Authority, on 10<sup>th</sup> June 2016 for independent examination

This Consultation Statement has been prepared to comply with Regulation 15 of the Neighbourhood Plan Regulation and provides the response to Regulation 14 of the Neighbourhood Plan (pre-submission statutory consultation) and has been prepared by Bidford Neighbourhood Plan Steering Group to fulfil the legal obligations as set out in the Neighbourhood Planning Regulations 2012.

Section 15 (2) of Part 5 of the Regulations sets out that a Consultation Statement should contain:

- a) Details of the persons and bodies who were consulted about the proposed Neighbourhood Development Plan (NDP)
- b) Explanation of how they were consulted
- c) Summary of the main issues and concerns raised by those consulted
- d) Description of how these issues and concerns were considered and, where necessary, how they were addressed

This Consultation Statement summarises all statutory consultations undertaken with all relevant statutory bodies, as well as non-statutory consultation with the local community. It includes how the main concerns raised were considered, how they changed the NDP to reach the final version being submitted.

A Consultation Evidence File which provides a record of all the consultation exercises, comments and feedback are enclosed as detailed below

#### Appendix 1

- Details of the persons or bodies consulted and how they were consulted

#### Appendix 2

- Parish questionnaire (December 2014)
- Business questionnaire results (January 2015)
- Household questionnaire results (January 2015)
- Analysis of site allocations
- Minutes of meeting 03.03.15 when results were considered

#### Appendix 3

- Consultation on draft policies (25.05.15 – 06.07.15)
- Responses to consultation on draft policies (May 2015)
- Minutes of meeting 09.07.15
- Minutes of meeting 29.07.15

## Bidford NDP – Consultation Statement

---

### Appendix 4

- Pre-submission Draft Policy Consultation (24.09.15 - 06.11.15)
- Press advertisement (24.09.2015)
- Summary of third party comments and responses
- Summary of SDC comments and responses



Raising awareness event

Bidford-on-Avon Parish Council and Bidford Neighbourhood Plan Steering Group have consulted with both its local community and the statutory bodies when preparing its NDP.

Enquiries regarding the Statement should be made to:

Mrs Elisabeth Uggerloese, Clerk to Bidford-on-Avon Parish Council and Bidford Neighbourhood Plan Steering Group Co-ordinator

Tel. No. 01789 7789653/07718 628925

Email: [info@bidfordonavon-pc.gov.uk](mailto:info@bidfordonavon-pc.gov.uk)

### **2. BACKGROUND TO CONSULTATION ON NEIGHBOURHOOD DEVELOPMENT PLAN**

Bidford-on-Avon Parish Council has always been keenly aware of the importance of planning in its parish, especially since the late 1970s when it was named one of Stratford-on-Avon's District Council's seven Main Rural Centre villages.

In 2002/03 it carried out a comprehensive Parish Plan, known as the B50, which was adopted in December 2003 and updated in 2009/10. In May 2013 members of the Parish Council were selected to its Parish Council Steering Group, which was given the remit of raising awareness of the NDP within the local community.

This was done in a number of ways

- Attending events organised by local community groups
- Publishing an article explaining NDP – its purpose and how it empowered local communities – in the quarterly publication, the BIG Paper, which is delivered to all households in the parish
- Giving explanatory leaflets to the businesses
- Sending letters to
  - Churches
  - School
  - Community groups
  - Businesses
  - Medical surgery
- Dedicating the Annual Parish Assembly of April 2014 exclusively to the NDP, when a presentation was made by Hannah Barter, a consultant provided by Locality, who also took a Questions and Answers session. Residents were encouraged to volunteer to help the project and to become part of the NDP Steering Group



Launching NDP Event April 2014

The Bidford Neighbourhood Development Plan is the result of three years by the Bidford Neighbourhood Steering Group supported by Bidford-on-Avon Parish Council and the local residents and businesses.



### 3. NEIGHBOURHOOD PLAN PARISH SURVEY

The NDP Steering Group was formed in April 2014 with Cllr Joe Harvey, Chairman of the Planning committee, elected as Chairman. It held its first meeting in May 2014 when it was agreed what the main headings of the plan should be:

- Amenities, Community and Recreation
- Economic and Employment Welfare
- Environmental Issues
- Planning and Infrastructure

Members were elected to be part of one of the above sub-groups, which were to send regular reports to the Steering Group in time for them to be considered at each meeting.

It was also agreed that the Steering Group would, initially, meet monthly, be open to the public and the meetings be duly advertised.

To ensure the NDP reflected the vision of the local community, the NDP Steering Group agreed a Parish Survey should be sent to all households, using the B50 Parish Plan as a template.

The Steering Group used a number of methods to advertise the NDP:

- Banners were placed in strategic areas
- Flyers were posted on Parish Council Notice boards and given to local shopkeepers
- Article included in the Parish Council's monthly newsletter included in The Connection magazine which is distributed to all households and businesses
- Article announcing the survey was published in The BIG Paper
- Members of the Steering Group engaged with the community outside the local supermarket over a couple of weekend
- The survey was also available online.



Publicising the NDP Parish Survey Dec. 2014



Publicising the NDP Parish Survey Dec. 2014

### 4. CONSULTATIONS – NON-STATUTORY AND STATUTORY

The replies received to the Parish Survey which were independently collated by the Consultation & Insight Unit, Stratford-on-Avon DC, were found to be very useful and formed the basis for the NDP Draft Policies consultation document. It was also very satisfactory to note the high number of replies received, which would give the document more weight.

Of particular importance was the analysis of the 15 identified allocation sites, as this gave a very strong indication of the sites that would be acceptable and those that would not.

The Steering Group also agreed that a Strategic Environment Assessment (SEA) Scoping Report should be commissioned. This would be welcome by such statutory consultees as English Heritage, Natural England and the Environmental Agency and would be additional evidence base for the Neighbourhood Environment policies.

#### i. **Draft Policies Consultation – Local Community version**

Using the information obtained from the Parish Survey, the Steering Group started working on the Draft Policies Consultation document. It was agreed the headings had worked well and would, therefore, continue to be used. Each sub-group was requested to work on developing the policies that would form part of the NDP document:

- Neighbourhood Housing (Planning & Infrastructure)
- Neighbourhood Economic (Economic & Employment Welfare)
- Neighbourhood Environment
- Neighbourhood Amenities (Amenities, communities & recreational)

#### ii. **Promoting the Draft Policies Consultation – Local Community version**

The local community was consulted on the draft policies for a 6 week period (26<sup>th</sup> May to 6<sup>th</sup> July 2015).

Articles were included in the monthly newsletter for May and July 2015, included in The Connection, which is distributed to all households, and a flyer was included in the June edition which was delivered on the bank holiday week end in time for the start of the consultation on 26<sup>th</sup> May 2015.

Boards, highlighting the main issues under each heading, were commissioned and a set permanently displayed at Bidford Community Library, whilst the Steering Group used a second set to be displayed at different venues in the village during the period.

For the second time, the Annual Parish Assembly was used as an Open Evening NDP Event and residents were invited to view the displays and ask questions of the Steering Group.

#### iii. **Addressing the local community concerns**

The highest number of concerns were regarding the Housing Policies, with many of the responses simply stating they did not support any further development.

This was especially significant in respect of Policy H2 – Strategic Reserves for Future Building Site. This policy offered the option of two sites, based on the



## Bidford NDP – Consultation Statement

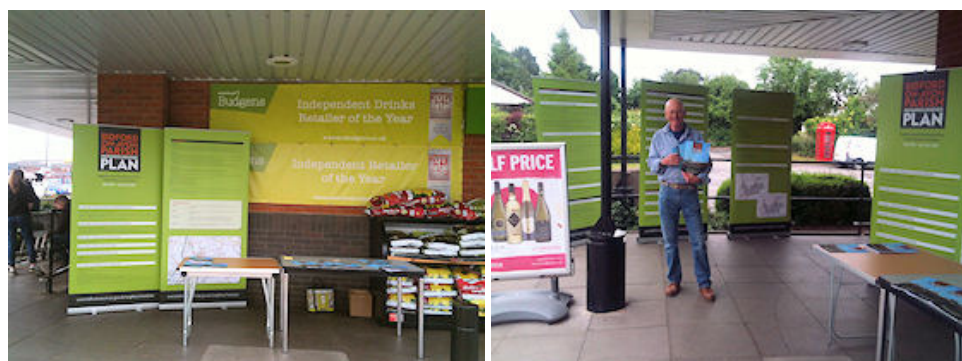
---

Analysis of Site Development Proposals: the response to this was 71.7% against.

This concern was raised again at a Steering Group meeting in July attended by a number of residents. The Chairman addressed the concerns by explaining the purpose of a NDP and the reason behind allocating a Strategic Reserve Site, was that it would be more beneficial for the site to be allocated by the local community as opposed to having a site imposed on it.



Parish Assembly – April 2015



Draft Policies Consultation outside local supermarket June 2015



Draft Policies Consultation permanent display 26<sup>th</sup> May to 6<sup>th</sup> July 2015

iv. **Pre-submission Draft Policies Consultation**

The Steering Group reviewed the Pre-submission Consultation document on 15<sup>th</sup> Aug. 2015 making the necessary amendments following the local community consultation.

The issue of Policy H2 – allocation of a Strategic Reserve Site went to a vote which resulted in it being included in the final version, which was ratified by the Steering Group at its meeting of 25<sup>th</sup> August 2015 (subsequent to advice from environmental consultants the Strategic Reserve site was omitted from the final version of the plan)

The six week consultation period was from 24<sup>th</sup> September to 6<sup>th</sup> November 2015

v. **Changes to the NDP document**

One comment made resulted in the Steering Group making a fundamental changes to the NDP document to include Policy H2 – Rural Exception Housing.

### 5. LEGISLATIVE BASIS

Section 15(2) of part 5 of the 2012 Neighbourhood Planning Regulations sets out that a consultation statement should be a document containing the following:

- Details of the persons or bodies who were consulted about the proposed Neighbourhood Development Plan
- Explanation of how they were consulted
- Details and summary of the main issues and concerns raised by the persons consulted on the draft plan
- Description of how these issues and concerns have been considered and, where relevant, addressed in the proposed Neighbourhood Development Plan



Bidford Bridge – Scheduled Ancient Monument



### 6. CONSULTATION STATEMENT

- i. The **Bidford-on-Avon Neighbourhood Plan Parish Survey** Document was published on 23<sup>rd</sup> December 2014 and made available on that date on the Parish Council website ([www.bidfordonavon-pc.gov.uk](http://www.bidfordonavon-pc.gov.uk)) using the following link <https://www.snapsurveys.com/wh/s.asp?k=141934882593> and delivered to all households within the parish the weekend of 20/21<sup>st</sup> December 2014 together with a SAE for the completed form to be sent back. The survey could also be carried out online by using the above link

Table 1 – Locations where the NDP Parish Survey as available for inspection

LOCATION	AVAILABLE DATE	COMMENTS
Parish Council website	23 <sup>rd</sup> December 2014	Online using link provided
All Households	20/21 <sup>st</sup> December 2014	Return in SAE provided
Bidford Community Library, Bramley Way Monday and Tuesday 10.00 – 16.30 hrs. Friday 10.00 – 18.00 hrs. Saturday 10.00 – 12.00 hrs.,	22 <sup>nd</sup> December 2014	Return in SAE provided
Parish Council Office, Bramley Way Monday – Friday 10.00 – 15.00 hrs. Except Thursdays 13.30 – 16.30 hrs.	22 <sup>nd</sup> December 2014	Return in SAE provided Give to Clerk



- ii. The **Bidford-on-Avon Neighbourhood Plan Draft Policy Local Community** version document was published on 25<sup>th</sup> May 2015 and made available online at the Parish Council website ([www.bidfordonavon-pc.gov.uk](http://www.bidfordonavon-pc.gov.uk)) using the following link <https://www.snapsurveys.com/wh/s.asp?k=143229775330>

Table 2 – Locations where the Draft Policy Local Community document was made available

LOCATION	AVAILABLE DATE	COMMENTS
Parish Council website	25 <sup>th</sup> May 2015	Online using link provided
Parish Council Office, Bramley Way Monday – Friday 10.00 – 15.00 hrs. Except Thursdays 13.30 – 16.30 hrs.	25 <sup>th</sup> May 2015	Give to completed form to Clerk
Bidford Community Library, Bramley Way Monday and Tuesday 10.00 – 16.30 hrs. Friday 10.00 – 18.00 hrs. Saturday 10.00 – 12.00 hrs.,	25 <sup>th</sup> May 2015	Give completed form to Clerk
Annual Parish Assembly Parish Council Meeting Room, Bramley Way	1 <sup>st</sup> June 2015	Give completed form to Clerk
Various venues throughout the parish led by members of the Steering Group	June/July 2015	Give completed form to Clerk



- iii. The **Bidford-on-Avon Neighbourhood Development Plan Pre-submission Draft Policy** document was made available on 24<sup>th</sup> September 2015 and went live online at the Parish Council website ([www.bidfordonavon-pc.gov.uk](http://www.bidfordonavon-pc.gov.uk)) using the following link  
<https://www.snapsurveys.com/wh/s.asp?k=144285030135>

Table 3 – Locations where the Pre-submission Draft Policy document was made available.

LOCATION	AVAILABLE DATE	COMMENTS
Stratford Herald	Notice published 24 <sup>th</sup> September 2015	
Parish Council website	24 <sup>th</sup> September 2015	Online using link provided
Parish Council Office, Bramley Way Monday – Friday 10.00 – 15.00 hrs. Except Thursdays 13.30 – 16.30 hrs.	24 <sup>th</sup> September 2015	Give to Clerk
Bidford Community Library, Bramley Way Monday and Tuesday 10.00 – 16.30 hrs. Friday 10.00 – 18.00 hrs. Saturday 10.00 – 12.00 hrs.	24 <sup>th</sup> September 2015	Give to Clerk
Statutory Consultees (as per list provided by the LPA)	Sent on 24 <sup>th</sup> September 2015	





## Bidford NDP – Consultation Statement

iv. Table 4 – sets out details of the additional publicity undertaken

<b>METHOD</b>	<b>TARGET</b>	<b>EVENT</b>	<b>LOCATION</b>	<b>DATE</b>
Personal letters	Local community groups Churches Schools Sports clubs Businesses	Annual Parish Assembly/NDP event	Delivered to 28 parties	7 <sup>th</sup> April 2014
Posters	Local community	Consultations	Notice boards Prominent places Shop windows Website	7 <sup>th</sup> April 14 6 <sup>th</sup> Nov. 15
Banners	Local community	Consultations	Roundabout (centre of village) B439 (main thoroughfare) Local supermarket	7 <sup>th</sup> April 14 6 <sup>th</sup> Nov. 15
Public notices	Local community	NDP Steering Group meetings	Noticeboards Website	7 <sup>th</sup> April 14 16 May 16
Public Events	Local community Businesses	Open days	Parish Council Meeting Room Outside the local Supermarket Village Halls	From 7 <sup>th</sup> April 14 To 6 Nov. 15
Website updates	Local community Statutory consultees			
Articles in the BIG Paper (quarterly magazine)	Local community	Updates and notification of consultations and other events	Delivered to all households	
Articles in Newsletter included in monthly magazine The Connection	Local community	Updates and notification of consultations and other events	Delivered to all households	
Facebook and Twitter	Local community	Meetings and events		

### 7. CONCLUSION

This Bidford-on-Avon Neighbourhood Development Plan Consultation Statement and its appendices are considered to comply with Section 15(2) of Part 5 of the 2012 Neighbourhood Planning Regulations.

All information, including appendices, is available at  
<https://www.stratford.gov.uk/planning/neighbourhood-plans.cfm>

The purpose of Appendices 2 and 3 is to summarise the outcomes of the local community consultations:

- NDP Parish Survey – held Jan/Feb 2015
- NDP Draft Policy Consultation – held from 25<sup>th</sup> May to 6<sup>th</sup> July 2015

The purpose of the consultation process was to ensure the local community was fully involved in the process. Their responses informed and shaped the plan throughout the process.

All responses received were considered at length by the NDP Steering Groups and, where necessary, changes were made, prior to submitting the NDP to the LPA..

Responses made by the Statutory Consultees, and the consideration given to them by the NDP Steering Group, are included in Appendix 4.

Stratford-on-Avon District Council (SDC), the Local Planning Authority for Bidford-on-Avon Parish Council, has provided informal officer comments, and Bidford-on-Avon NDP Steering Group has been in regular contact with the LPA during the preparation of its NDP to ensure it is in conformity with SDC's Core Strategy at all times.

SDC suggested some amendments to the Pre-Submission Neighbourhood Plan Regulation 14 Consultation, changes that were incorporated into the plan.

### APPENDIX 1

#### Details of persons or bodies consulted and how they were consulted

- Local Community – Newsletters, articles, posters and banners
- Local Groups – letter sent to
  - Sports associations
  - Community groups
  - Churches
  - School
  - Doctors surgery
- Local business – letters and surveys hand delivered
- Statutory Bodies – Public Notice in the Stratford Herald and emails sent to

Akins Ltd	<a href="mailto:windfarms@atkinsglobal.com">windfarms@atkinsglobal.com</a>
ancient monuments society	<a href="mailto:office@ancientmonumentsociety.org.uk">office@ancientmonumentsociety.org.uk</a>
Arqiva	<a href="mailto:enquiries@arqiva.com">enquiries@arqiva.com</a>
Birmingham International Airport	<a href="mailto:andrew.davies@birminghamairport.co.uk">andrew.davies@birminghamairport.co.uk</a>
BT Group PLC	<a href="mailto:ian.binks@bt.com">ian.binks@bt.com</a>
CABE	<a href="mailto:info@designcouncil.org.uk">info@designcouncil.org.uk</a>
CABE	<a href="mailto:kate.jones@designcouncil.org.uk">kate.jones@designcouncil.org.uk</a>
Canal and River Trust	<a href="mailto:planning@canalrivertrust.org.uk">planning@canalrivertrust.org.uk</a>
Capital and Property Projects	<a href="mailto:property@warwickshire.gov.uk">property@warwickshire.gov.uk</a>
Coal Authority	<a href="mailto:planningconsultation@coal.gov.uk">planningconsultation@coal.gov.uk</a>
Council for British Archaeology	<a href="mailto:webenquiry@archaeologyuk.org">webenquiry@archaeologyuk.org</a>
Council for British Archaeology	<a href="mailto:casework@britarch.ac.uk">casework@britarch.ac.uk</a>
Cotswold Conservation Board	<a href="mailto:malcolm.watt@cotswoldsaonb.org.uk">malcolm.watt@cotswoldsaonb.org.uk</a>
Cov & Leics Diocesan Advisory Cttee	<a href="mailto:dac@covlecportal.org">dac@covlecportal.org</a>
Civil Aviation Authority	<a href="mailto:mark.wakeman@caa.co.uk">mark.wakeman@caa.co.uk</a>
Coventry Airport	<a href="mailto:rsweeney@coventryairport.co.uk">rsweeney@coventryairport.co.uk</a>
CTC - National Cycling Charity	<a href="mailto:righttoride@ctc.org.uk">righttoride@ctc.org.uk</a>
CTC - National Cycling Charity	<a href="mailto:cycling@ctc.org.uk">cycling@ctc.org.uk</a>
English Heritage	<a href="mailto:e-wmids@english-heritage.org.uk">e-wmids@english-heritage.org.uk</a>
Historic England	<a href="mailto:peter.boland@historicengland.org.uk">peter.boland@historicengland.org.uk</a>
English Heritage Parks and Gardens	<a href="mailto:kim.auston@english-heritage.org.uk">kim.auston@english-heritage.org.uk</a>
Environment Agency	<a href="mailto:martin.ross@environment-agency.gov.uk">martin.ross@environment-agency.gov.uk</a>
Environment Agency	<a href="mailto:swmplaning@environment-agency.gov.uk">swmplaning@environment-agency.gov.uk</a>
Everything Everywhere	<a href="mailto:windfarms.orange@everythingeverywhere.com">windfarms.orange@everythingeverywhere.com</a>
Force Crime Prevention Design Advisor	<a href="mailto:mark.english@warwickshire.pnn.police.uk">mark.english@warwickshire.pnn.police.uk</a>
Forestry Commission	<a href="mailto:paul.webster@forestry.gsi.gov.uk">paul.webster@forestry.gsi.gov.uk</a>
Garden History Society	<a href="mailto:conservation@gardenhistorysociety.org">conservation@gardenhistorysociety.org</a>
Georgian Group	<a href="mailto:david@georgiangroup.org.uk">david@georgiangroup.org.uk</a>
Glide Sport UK	<a href="mailto:office@glidesportuk.co.uk">office@glidesportuk.co.uk</a>
Homes and Communities Agency	<a href="mailto:mail@homesandcommunities.co.uk">mail@homesandcommunities.co.uk</a>
Highways Agency (east mids)	<a href="mailto:spatialplanningEM@highwaysengland.co.uk">spatialplanningEM@highwaysengland.co.uk</a>
Highways Agency (west mids)	<a href="mailto:nddrstwm@highwaysengland.co.uk">nddrstwm@highwaysengland.co.uk</a>

## Bidford NDP – Consultation Statement

---

Inland Waterways Association	<a href="mailto:nick.kenilworth@fsmail.net">nick.kenilworth@fsmail.net</a>
Inland Waterways Association	<a href="mailto:iwa@waterways.org.uk">iwa@waterways.org.uk</a>
Joint Radio company	<a href="mailto:windfarms@jrc.co.uk">windfarms@jrc.co.uk</a>
Kernon Countryside Consultants	<a href="mailto:info@kernon.co.uk">info@kernon.co.uk</a>
London Oxford Airport	<a href="mailto:info@londonoxfordairport.com">info@londonoxfordairport.com</a>
MBNL(Acting for Everything Everywhere)	<a href="mailto:info@mbnl.co.uk">info@mbnl.co.uk</a>
MBNL(Acting for Everything Everywhere)	<a href="mailto:amanda.baker@mbnl.co.uk">amanda.baker@mbnl.co.uk</a>
Ministry of Defence	<a href="mailto:deopsnorth-lms7safe@de.mod.uk">deopsnorth-lms7safe@de.mod.uk</a>
Accessible Stratford	<a href="mailto:med2swan@gmail.com">med2swan@gmail.com</a>
Mobile Phone Operators	<a href="mailto:dpm@monoconsultants.com">dpm@monoconsultants.com</a>
Mr Butler (CPRE)	<a href="mailto:namb999@btinternet.com">namb999@btinternet.com</a>
CPRE	<a href="mailto:office@cprewarwickshire.org.uk">office@cprewarwickshire.org.uk</a>
National Air Traffic Services	<a href="mailto:nerlsafeguarding@nats.co.uk">nerlsafeguarding@nats.co.uk</a>
National Grid Gas Distribution	<a href="mailto:plantprotection@uk.ngrid.com">plantprotection@uk.ngrid.com</a>
National Grid UK Transmission	<a href="mailto:ap.enquiries@ukngrid.com">ap.enquiries@ukngrid.com</a>
National Planning Casework Service	<a href="mailto:npcu@communities.gsi.gov.uk">npcu@communities.gsi.gov.uk</a>
National Trust	<a href="mailto:james.sharp@nationaltrust.org.uk">james.sharp@nationaltrust.org.uk</a>
National Trust	<a href="mailto:chris.lambart@nationaltrust.org.uk">chris.lambart@nationaltrust.org.uk</a>
Natural England	<a href="mailto:consultations@naturalengland.org.uk">consultations@naturalengland.org.uk</a>
Natural England	<a href="mailto:jamie.melvin@naturalengland.org.uk">jamie.melvin@naturalengland.org.uk</a>
Network Rail	<a href="mailto:townplanning.LNW@networkrail.co.uk">townplanning.LNW@networkrail.co.uk</a>
Ofcom	<a href="mailto:spectrum.licensing@ofcom.org.uk">spectrum.licensing@ofcom.org.uk</a>
Off Route Airspace	<a href="mailto:steve.hyett@caa.co.uk">steve.hyett@caa.co.uk</a>
Off Route Airspace	<a href="mailto:marks.smailes@caa.co.uk">marks.smailes@caa.co.uk</a>
SDC Conservation	<a href="mailto:planning.conservation@stratford-dc.gov.uk">planning.conservation@stratford-dc.gov.uk</a>
WCC Principle Highway Control Officer	<a href="mailto:neilbenison@warwickshire.gov.uk">neilbenison@warwickshire.gov.uk</a>
Ramblers Association	<a href="mailto:ramblers@ramblers.org.uk">ramblers@ramblers.org.uk</a>
Ramblers Association	<a href="mailto:michael.b43@o2.co.uk">michael.b43@o2.co.uk</a>
SDC Planning and Environment	<a href="mailto:planning.applications@stratford-dc.gov.uk">planning.applications@stratford-dc.gov.uk</a>
Royal Agricultural Society of England	<a href="mailto:martynluscombe@hotmail.com">martynluscombe@hotmail.com</a>
RSPB	<a href="mailto:colin.wilkinson@rspb.org.uk">colin.wilkinson@rspb.org.uk</a>
Severn Trent Water	<a href="mailto:net.dev.east@severntrent.co.uk">net.dev.east@severntrent.co.uk</a>
Sport England West Midlands	<a href="mailto:planning.westmidlands@sportengland.org">planning.westmidlands@sportengland.org</a>
Sport England West Midlands	<a href="mailto:bob.sharple@sportengland.org">bob.sharple@sportengland.org</a>
Stratford-on-Avon Gliding Club	<a href="mailto:chairman@stratfordgliding.co.uk">chairman@stratfordgliding.co.uk</a>
Stratford-on-Avon Gliding Club	<a href="mailto:nick.jaffray@btopenworld.com">nick.jaffray@btopenworld.com</a>
Sustrans	<a href="mailto:edward.healey@sustrans.org.uk">edward.healey@sustrans.org.uk</a>
Thames Water Utilities	<a href="mailto:devconteam@thameswater.co.uk">devconteam@thameswater.co.uk</a>
The Design Council	<a href="mailto:kate.jones@designcouncil.org.uk">kate.jones@designcouncil.org.uk</a>
Theatres Trust	<a href="mailto:planning@theatrestrust.org.uk">planning@theatrestrust.org.uk</a>
Upper Avon Navigation Trust Ltd	<a href="mailto:elainebaird@avonnavigationtrust.org">elainebaird@avonnavigationtrust.org</a>
Victorian Society	<a href="mailto:notifications@victoriansociety.org.uk">notifications@victoriansociety.org.uk</a>
Warwickshire Badger Group	<a href="mailto:sahyll@yahoo.co.uk">sahyll@yahoo.co.uk</a>
Warwickshire Bat Group	<a href="mailto:enquiries@warksbats.co.uk">enquiries@warksbats.co.uk</a>
Warwickshire Police	<a href="mailto:planningconsultations@warwickshire.police.uk">planningconsultations@warwickshire.police.uk</a>
Warwickshire Police	<a href="mailto:ian.king@warwickshire.pnn.police.uk">ian.king@warwickshire.pnn.police.uk</a>
Warwickshire Police Road Safety	<a href="mailto:roadsafety@warwickshire.police.uk">roadsafety@warwickshire.police.uk</a>
Warks Primary Care Trust	<a href="mailto:david.goodwin@coventrypct.nhs.uk">david.goodwin@coventrypct.nhs.uk</a>
Warks Primary Care Trust	<a href="mailto:graham.nuttall@property.nhs.uk">graham.nuttall@property.nhs.uk</a>
NHS Property Services Ltd	<a href="mailto:joanne.bowers@property.nhs.uk">joanne.bowers@property.nhs.uk</a>

## Bidford NDP – Consultation Statement

---

NHS Property Services Ltd	<a href="mailto:mark.jones@property.nhs.uk">mark.jones@property.nhs.uk</a>
Warwickshire Rural Housing Association	<a href="mailto:sarahbt@wrccrural.org.uk">sarahbt@wrccrural.org.uk</a>
Warwickshire Wildlife Trust	<a href="mailto:annie.english@wkwt.org.uk">annie.english@wkwt.org.uk</a>
Warks Wildlife Trust	<a href="mailto:gina.rowe@wkwt.org.uk">gina.rowe@wkwt.org.uk</a>
WCC - planning	<a href="mailto:planningstrategy@warwickshire.gov.uk">planningstrategy@warwickshire.gov.uk</a>
WCC Archaeology	<a href="mailto:annastocks@warwickshire.gov.uk">annastocks@warwickshire.gov.uk</a>
WCC Capital & Property Projects Officer	<a href="mailto:julianhumphreys@warwickshire.gov.uk">julianhumphreys@warwickshire.gov.uk</a>
WCC Extra Care Housing	<a href="mailto:timwillis@warwickshire.gov.uk">timwillis@warwickshire.gov.uk</a>
WCC Flood Risk	<a href="mailto:michaelgreen@warwickshire.gov.uk">michaelgreen@warwickshire.gov.uk</a>
WCC Ecology	<a href="mailto:planningecology@warwickshire.gov.uk">planningecology@warwickshire.gov.uk</a>
WCC Forestry	<a href="mailto:forestry@warwickshire.gov.uk">forestry@warwickshire.gov.uk</a>
WCC Fire & Rescue Service	<a href="mailto:fireandrescue@warwickshire.gov.uk">fireandrescue@warwickshire.gov.uk</a>
WCC Gypsy & Traveller Officer	<a href="mailto:robertleahy@warwickshire.gov.uk">robertleahy@warwickshire.gov.uk</a>
WCC Health & Communities	<a href="mailto:timwillis@warwickshire.gov.uk">timwillis@warwickshire.gov.uk</a>
WCC Highways	<a href="mailto:highwayconsultation@warwickshire.gov.uk">highwayconsultation@warwickshire.gov.uk</a>
WCC Land Registry	<a href="mailto:peterendall@warwickshire.gov.uk">peterendall@warwickshire.gov.uk</a>
WCC Libraries	<a href="mailto:paulmacdermott@warwickshire.gov.uk">paulmacdermott@warwickshire.gov.uk</a>
WCC Rights of Way	<a href="mailto:elainebettger@warwickshire.gov.uk">elainebettger@warwickshire.gov.uk</a>
WCC Stratford Cycle Forum	<a href="mailto:johnharvey@warwickshire.gov.uk">johnharvey@warwickshire.gov.uk</a>
Wellesbourne Airfield	<a href="mailto:mjlittler@hotmail.com">mjlittler@hotmail.com</a>
Wellesbourne Airfield	<a href="mailto:tower@wellesbourneairfield.com">tower@wellesbourneairfield.com</a>
Western Power Distribution	<a href="mailto:wpdwayleavesmidlands@westernpower.co.uk">wpdwayleavesmidlands@westernpower.co.uk</a>
Woodland Trust	<a href="mailto:enquiries@woodlandtrust.org.uk">enquiries@woodlandtrust.org.uk</a>
Warwickshire Rural Community Council	<a href="mailto:kims@wrccrural.org.uk">kims@wrccrural.org.uk</a>
Warwickshire Amphibian and Reptile Team	<a href="mailto:tim@gribblybugs.com">tim@gribblybugs.com</a>
Stansgate Planning	<a href="mailto:mail@stansgate.co.uk">mail@stansgate.co.uk</a>
Coventry and Warwickshire Partnership NHS Trust	<a href="mailto:enquiries@covwarkpt.nhs.uk">enquiries@covwarkpt.nhs.uk</a>
South Warwickshire Critical Commissioning Group	<a href="mailto:contactus@southwarwickshireccg.nhs.uk">contactus@southwarwickshireccg.nhs.uk</a>

### APPENDIX 2

- Parish questionnaire (December 2014)
- Business questionnaire results (January 2015)
- Household questionnaire results (January 2015)
- Analysis of site allocations
- Minutes of meeting 03.03.15 when results were considered

### APPENDIX 3

- Consultation on draft policies (25.05.15 – 06.07.15)
- Responses to consultation on draft policies (May 2015)
- Minutes of meeting 09.07.15
- Minutes of meeting 29.07.15

### APPENDIX 4

- Pre-submission Draft Policy Consultation (24.09.15 - 06.11.15)
- Press advertisement (24.09.2015)
- Summary of third party comments and responses
- Summary of SDC comments and responses

