



Snitterfield Parish Plan 2006



Snitterfield Parish Plan
Prepared by the steering group:
P Briggs
K Chatland
Y Hanson
J Harris
G Stammers

Sponsored and supported by Snitterfield Parish Council

INTRODUCTION

Parish Plan – the starting point 4

FACILITIES

Schools 5
 Religion 5
 Shops and other retail outlets 6
 Village shop 6
 Post Office 6
 Public Houses and accommodation 6
 Village Hall 6
 Doctors' Surgery 7
 Other leisure and sports facilities 7
 Facilities for young people 8
 Mobile Library 9
 Conclusions and Recommendations 9

INFRASTRUCTURE

Lighting 10
 Public transport 11
 Services 11
 Flood prevention 11
 Utilities 11
 (Electricity, Gas and Water supply)
 Objectives and Recommendations 11
 Recommendations for 12
 transport and roads
 Cost Implementation 12
 Recommendations for services 12
 Partners 12

EMPLOYMENT

Other retail 13
 The 2001 census 13
 Type of work 13
 The type of industry 13
 Travel to work 14
 Local employers 14
 Micro companies and self employed 14
 Other employment opportunities 15
 Job Seekers and Job Centre 15
 Conclusions and Recommendations 15
 Partners 15

ENVIRONMENT

A Green Future? 16
 Rural Countryside and Land Use 16
 Farms 16
 Fruit Farm and local produce 16
 Conservation 17
 Open spaces within the village 17
 Bell Brook 17
 Site of Special Scientific Interest (SSSI) 17
 The Natural Environment 18
 The Garden Club 18
 Recent developments 18
 Street Lighting 19
 Cycling 19
 Recommendations 19
 Environment 19
 Recycling 19
 Facilities 19
 Transport 19
 Partners 19

THE DEVELOPMENT OF THE VILLAGE

Housing 20
 Recommendations 20
 Partners 21

OTHER ISSUES

Recommendations 21
 Partners 21
 Results of the Questionnaire 22
 Sketches of options for re-alignment
 and other alterations of road junctions 22

ACTION PLAN 2006 ONWARD

Plans 23-28



Introduction

The purpose of this Parish Plan is to set out a vision for the future development of our community and how that will be achieved. Parish Plans can influence a wide range of organisations and processes which affect the lives of the people living in our Parish. In the plan we set out to consider local problems and opportunities. It sets out a broad vision for the future and its place in the Stratford on Avon District Council's local plan.

The Parish Plan has been reviewed and adopted by Stratford on Avon District Council (SDC).

We will agree how long the plan will last for with the SDC (this is normally 5 years) and a review period set so that changes in National, County and District policies can be incorporated, where appropriate and changes in local needs and expectations can be instituted. (Note: The present SDC Community Plan will last until 2014, the Local Plan until 2011).

All supporting documentation is available for inspection if required, please contact the Clerk to the Parish Council.

The Parish Plan is a project led by the community, but supported and sponsored by The Parish Council. It has been produced by members of the Parish with help from professional people and organisations who are capable of obtaining and processing the

information and data needed to produce the Parish Plan.

Our Parish Appraisal was adopted by the SDC in 2002, it clearly set out the needs and expectations of the Parish. It was during the evaluation of the data and from comments made at our open days that certain key criteria became apparent. From this it was agreed that we needed to make a more structured short and longer term plan for the development of the village and Parish of Snitterfield.

In 2001 we prepared, and had adopted, our Village Design Statement (VDS), currently being used by SDC planning department as a supplementary planning guidance for the village of Snitterfield. The VDS sets out clearly the features that must be retained in the village and it explains the history of its development from Saxon times and the layout that has resulted in the rural character of Snitterfield.

The layout of the village is one of linear development along the original lanes and tracks that join the upper and lower part of the village. This layout is not unique to Snitterfield, but follows many other Warwickshire villages and must be retained and encouraged when sites are selected for development.

The Parish Appraisal was completed in 2002. It showed what we already had and what we still required to keep the community together, active, and interested in the village life and in the development of the Parish.

The Appraisal also highlighted weaknesses and strengths within our community that have

already been acted upon, such as keeping the Parish aware and up-to-date on issues which impact upon our future.

The response to the appraisal questionnaire was over 75% and the respondents ranged from 11 to 95 years of age.

Funding for these documents came from several sources including The SDC, Warwickshire Rural Community Council and The Parish Council. To fund the Parish Plan we have been offered financial support from The Parish Council, The Countryside Agency, The District Council and local industry. The major part of the cost will be in kind by the team of parishioners and supporting professionals. Presentation of the final Plan and its publication is by the same organisation that produces the highly acclaimed *Snipe* newsletter, a publication resulting directly from the appraisal and produced by members of the Parish.



Parish plan – the starting point

From the appraisal the following issues were identified:

- The make up of the village and Parish
- The population, its age grouping
- How long people have lived in the village
- The reason for people to move away from the village
- Education, in the village and local to the village, outside of the Parish
- Employment, local and outside of the Parish
- Travel and transport needs and the need to use private cars
- The main centres of employment
- The types of employment full or part time
- Public Transport
- Traffic in and around the village, speed, safety, parking, traffic calming and road improvements
- Services within the village, gas, water, electricity, drainage, street cleaning, snow clearing, street lighting, etc
- Amenities in the Parish such as the local village stores, doctors' surgery, postal services and policing, schooling and nursery facilities
- Facilities including indoor and outdoor sporting and social clubs and groups
- Crime and policing, including the Neighbourhood Watch scheme
- Development, housing needs and types of housing, location and pricing of suitable accommodation
- Environmental issues, recycling, waste collection, noise pollution, litter, flood

prevention and natural environment improvements

These issues, plus the Stratford on Avon Local Plan Review and its strategies and policies, are fundamental to the specific policies in the Parish Plan for Snitterfield and have been used as the starting point for development of this Parish Plan.

The vibrancy of any community is directly proportional to the diversity and number of activities available within that community. It also depends upon the keenness and organisational skills of volunteers. It is equally important that there are enough appropriate venues in order to cater for needs of the participants.

Snitterfield is well served with the facilities required to sustain a wide variety of activities.

Schools

At the heart of every successful rural community is the Village School. Snitterfield has a thriving infant and junior school which has been recently extended. The majority of children at the school come from the Parishes of Snitterfield and Bearley.

The school is supported by an active PTA which helps to organise events, including fund-raising for the school.

There is also has a flourishing nursery school, located within the primary school grounds, this

is run as a registered charity.

In addition there is a pre-nursery toddler group (Rag Tag Toddlers) located in the Village Hall, and an associated baby group in the Graham Simons Room adjacent to the Parish Church. (See also recommendations)

Religion

Within the Parish boundary, there are two churches, the Parish church of St James the Great (Church of England), with its adjacent meeting room, the Graham Simons Room, and the Methodist Church (Wesleyan). The vicar of St James the Great is shared with four other Parishes.

The vicar of St James the Great now lives in Wolverton and his ministry covers five Parishes (Snitterfield, Bearley, Norton Lindsey, Wolverton and Langley). Over the years, each denomination has experienced reducing congregations, in parallel with national trends, and national research shows that these trends are likely to continue.

St James the Great is a Grade 1 Listed building.

These buildings are important to the history of the village as well as to the worshippers and others in the community who use them today.

The buildings are likely to present increasing maintenance problems in the future and may become financial burdens on their respective churches.



Facilities

The village hall is the largest public meeting place in the village and is the centre of many of the activities that make the village such a vibrant place...



Outside the confines of the village, but within the Parish boundary, is located the Red Hill Christian Centre (a focus for spiritual and physical refreshment) and, on an adjacent site, the Guru Nanak Shrine at Babe Ke Farm, used for a celebration festival every year at the August Bank Holiday.

Shops and other retail outlets

Village shop

Snitterfield has, an award-winning general store (Snitterfield Village Stores), catering for a wide range of household needs; in addition there is a recently reopened farm shop situated at Snitterfield Fruit Farm (Medlars Farm Shop), stocking a variety of epicurean and organic foods. These retail facilities provide for shoppers from beyond the Parish as well as local residents.

The popularity and location of the Village Stores, however, gives rise to traffic congestion at certain times of the day, due to lack of parking at the shop. (See further details in Infrastructure and recommendation).

Post Office

The village has been without a Post Office since it was closed in 2001. While many villagers expressed a desire to have one in the village at the time of the Parish Appraisal, a number of changes in working practices since then have made it less likely that we will be able to have our own Post Office in the foreseeable future. Stamps and 'cash back' facilities are now available at the Village Store and state

benefits such as pensions and child allowances are now mainly paid into the bank accounts of the recipients. With broadband services now widely available and costs of information services reducing, internet banking is gaining popularity.

It is difficult to see how a village Post Office could be viable in the future, since the trend is to close rural Post Offices, plus the fact that security measures required may make it difficult to set up.

Public Houses and Accommodation

The village originally had five public houses, but in the late 1930s this was reduced to two, The Foxhunter and The Snitterfield Arms. Both have facilities for drinking and dining.

The Foxhunter is located in a prominent position at the main village crossroads on a compact corner site at the junction of School Road and Smiths Lane. It has restricted car parking.

The Snitterfield Arms is situated some 200 metres to the north of the crossroads on the Bearley Road. It has adequate private car parking facilities, which, due to its proximity to the Village Hall, are sometimes mistakenly used by participants of functions at the Hall.

Just within the Parish boundary to the east is situated the Stratford on Avon Manor Hotel, with 104 bedrooms, bar, restaurant and leisure facilities as well as 13 conference/function

rooms, the largest of which caters for 350 people.

To the south, just outside the Parish boundary, is located the Ingon Manor Hotel, Golf and Country Club. As well as featuring an 18-hole golf course, it has 3 conference/function rooms, the largest catering for 120 people, bar and restaurant facilities open to non-members.

These hotels and clubs attract users from well beyond the Parish, but are used by the local population as well.

A number of small Bed and Breakfast businesses exist in the Parish located on Kings Lane with wonderful vistas over the Avon valley. Again although available to the local community they attract business from far beyond the Parish.

Village Hall

Built in the 1931, opened in January 1932, the Village Hall consists of a large hall with stage, amenity room at the back, kitchen and toilets to the one side and small storage area to the other side. It is the largest public meeting place in the village and is the centre of many of the activities that make the village such a vibrant place.

The organisations/activities held in the village hall include:

- Parish Council (for Parish Council meetings)
- Women's Institute (first meeting taking place on 24 May 1933)

- Garden Club
- Rag Tag Toddlers
- Brownies
- Whist
- Bingo
- Ad hoc meetings and private events

There are a number of long-standing activities, which due to a decline in the number of participants, have only recently been dissolved. It may be that they will reform in the future, but it is possible that such a large hall will not be required for them.

A number of other activity groups within the village use the Hall for fund-raising events.

Although popular and well-used the Hall does have a number of problems. One of the main problem areas is the restricted car parking facilities with a maximum of twelve spaces when double parked. With a function capacity of some 100 persons, it is evident that some events can cause parking problems, with both public houses, and the Methodist Church car parks being used as overspill. Additional parking at the rear of the hall is not viable because of safety and exit problems.

Another potential problem is the requirement for ongoing maintenance. Due to its age the fabric of the building is likely to prove expensive to maintain in the future. The size of the hall and high ceilings also make it difficult and costly to heat.

It may be appropriate to consider the updating or replacement of the current hall as part of the plans for the future.

Considerations which could be taken into account could be making the facility more compact or flexible so that it is energy efficient; also a way to provide a facility with ample car parking. There are a number of options available to improve or update the village hall facility, these include:

- Repair and refurbish the existing hall
- Build a new hall, on the existing site
- Build a new hall elsewhere, possibly on a new site on the Parish Council owned playing field on the Wolverton Road, combining some functions with the recently formed Sports Club.

NB: It should be noted that, although in the Village Appraisal 20% favoured it being replaced by a new community centre, the majority of residents who returned the questionnaire (80%), felt that it should be left as it is, although no alternative options were put forward at that stage.

Doctors' Surgery

The village has had a doctors' surgery for over 30 years and there was a Doctors' Surgery in Church Road when the Village Appraisal was compiled in 2002.

Due to a reorganisation of health services within the area, doctors no longer take appointments at the existing facility. A triage nurse is available at the existing Snitterfield Surgery and a receptionist deals with the practice's appointments diary. Repeat prescriptions are also dealt with, dispensed

from Claverdon but can be collected from the Church Road surgery.

The nearest centre for appointments is now Claverdon, some 3 miles away.

It is very unlikely the facility will return to its previous standing. Although feedback from the Village Plan Questionnaire is that the facility should be maintained and users feel that services should be improved or expanded.

Other leisure and sports facilities

Scouts: Lying just outside the Parish boundary to the west is located the 1st Bearley and Snitterfield Scout Group. Whilst the site is near to the villages of Bearley and Snitterfield, the wide catchment area, not only includes Claverdon, Hatton and Norton Lindsey, but has many members from Henley-in-Arden, Wootton Wawen and Wilmcote.

The Group caters for all sections of the Scout movement and the site consists of 4.1 acres of land surrounded by woodland providing an ideal setting for the hut. There is sufficient space for their current range of activities and it is more than adequate to allow them to realise ambitious plans to improve the site's accommodation and facilities.

Golf: Just along from the Scout's site towards Snitterfield and to the north of the Bearley Road is located Stratford-on-Avon Oaks Golf Club, an 18 hole par 71 course established some ten years ago, with renovated driving range, practice facilities, clubhouse and restaurant

A reorganisation of health services within the area has resulted in doctors no longer taking appointments at the existing surgery facility. . .



Facilities

The natural development for all four sports within the same vicinity was to integrate into a sports club...



catering for all the needs of the golfer. There is, also situated within the complex, a Health and Fitness suite offering personal training, aromatherapy and body rehabilitation.

Gliding: On the other side of the road opposite Stratford-on-Avon Oaks is located Stratford-on-Avon Gliding Club. Flying seven days a week during the summer season from May to September, and weekends and Thursdays during the rest of the year, the club has 110 full flying members with 4 two-seater training aircraft and 3 single seaters, as well as 25 private-owned aircraft, all launched by a modern purpose-built winch to a height of anywhere between 1300 and 1700 feet.

Snitterfield Sports Club: This was formed in September 2004, from an amalgamation of four sports disciplines, bowls, cricket, junior football and tennis. The site, in Wolverton Road, was formally owned and administered by The Pearson Trust, and when the village cricket team was wound up in 1973, the ground was leased to Snitterfield Bowling club,



who undertook major earthworks to provide a new green, the legacy being the picturesque setting as seen today.

Tennis courts were constructed in 2000 on land adjacent the Bowls Clubhouse as a result of a millennium project

Snitterfield Cricket Club was reformed in 2002. Negotiations with the Parish Council brought about the construction of a new cricket pitch, on the playing field opposite the Clubhouse on the other side of the Wolverton Road, and the square was located in such a position as to allow for a junior football pitch. Junior football started up in 2003, and the natural development for all four sports within the same vicinity was to integrate into a sports club with the main emphasis on 'sport for all' for the village.

With the amalgamation, came the offer of the freehold from The Pearson Trust, in order that the club could develop its amenities further to the benefit of all in the community.



The clubhouse has a large function room with a kitchen, a bar, a snooker room and changing room, as well as a members' bar. It also benefits from having a purpose-made skittles alley running along one side of the function room and benefits from substantial car parking.

Facilities for young people

The Village Appraisal indicated one major problem at that time was the lack of facilities for young people, which was exacerbated by the lack of public transport to enable them to get to places where they can meet school friends or make use of appropriate facilities. However more facilities are now available, but it remains to be seen if this is adequate.

With the rapid changes in technology over the last few years, particularly the advent of broadband, it is apparent that young people now have alternatives to gathering together in one place to partake in such indoor activities as pool, table tennis, darts and suchlike or just sitting talking together over light refreshments.



All these facilities are available at the Sports Club and every youngster in the village has an opportunity to join.

The Sports Club goes some way in fulfilling the need of youngsters by encouraging sporting activity. Indeed, by way of illustration, the year 2004/5 saw the tennis section alone register 123 junior members.

There are two playing fields in the Village maintained by the Parish Council. The largest covering some 2.4 hectares is situated off the Wolverton Road opposite the Sports Club. The amenities offered include a playground area, with swings, a slide and climbing frame, a recently prepared cricket square and outfield, and a repositioned junior football pitch. The smaller playing field is located off The Green and incorporates soft surfaces under playground equipment, including swings and climbing frames, for use by the youngsters of the village.

Mobile Library

The Warwickshire County Council's Mobile Library serves the village.

The mobile library visits once a fortnight on Friday afternoons.



Conclusions and Recommendations

The following are the conclusions and recommendations for facilities in the Parish:

- Demographic trends should be monitored to ensure the future viability of the school.
- Snitterfield has sufficient facilities to encompass the activities that exist and has sufficient capacity to embrace new ones.
- Due to changing circumstances, it is unlikely that the procurement of a Post Office would be viable.
- Consideration should be given to modernising or relocating the ageing Village Hall. A group could be set up to evaluate the options.
- A focal point of many rural communities is the Village Shop and in order to sustain its existence, it is essential that the residents in that community patronise it.
- It is important that a medical facility is kept in the village. The status of the surgery must be monitored.

Snitterfield has sufficient facilities to encompass the activities that exist and has sufficient capacity to embrace new ones...



Infrastructure

Conflicts arise where the need for safety is at its greatest but the infrastructure is most compromised...



A thriving community needs to be supported by an appropriate infrastructure. This includes roads, transport, footpaths, utilities and other services. The village is affected not only by the immediate area of the Parish, but also by the wider environment within which it is situated.

Snitterfield lies at the centre of a number of roads connecting neighbouring villages and is within a 'box' of main distributor roads including the A46, A3400 and A439.

In addition to the traffic generated by the residents and visitors to Snitterfield a substantial amount is created by motorists using 'rat run' routes to avoid Longbridge and Bishopton roundabouts with the bulk of this traffic using White Horse Hill and Smiths Lane.

The evidence for this comes from Warwickshire's own Transport Planning unit's average daily figures for the five day working week summarised below and measured in 2001. When compared to the census figures of the same year, it is clear that a significant volume is not related to village originated activity.

Road	Peak am	Peak pm	Ave/day
Smiths Lane	9.00	18.00	3004
White Horse Hill	9.00	18.00	3249
Kings Lane	9.00	18.00	1061
Bearley Road	9.00	16.00	2009
Park Lane	9.00	17-19.00	550

Traffic survey results

Safety is an obvious concern as many of the local lanes are inappropriate for such traffic. Footpaths, where present, are often narrow or incomplete.

Traffic calming measures have helped – from aesthetically displeasing 'humps' to road narrowing, but while helping to reduce speed, fail to address the real problem of volume. Particular conflicts arise where the need for safety is at its greatest but the infrastructure is most compromised – for example around Snitterfield Stores and the School.

The particular concerns were raised in the Appraisal included the following:

- Access to/from the A46 at Park Lane/ King's Lane.
- The road narrowing on White Horse Hill.
- Access to/from the A46 at Kings Lane/ Gospel Oak Lane.

In addition:

- Opinion was divided over the need for action on the junctions at the top and bottom of Ingon Lane.
- In a village where the majority are car owners, 25% rely on parking on the road.



Lighting

Street lighting was indicated as a generally important issue but specific areas were identified for more provision, for example on Wolverton Road, Duttons Close, Hales Close and The Green.

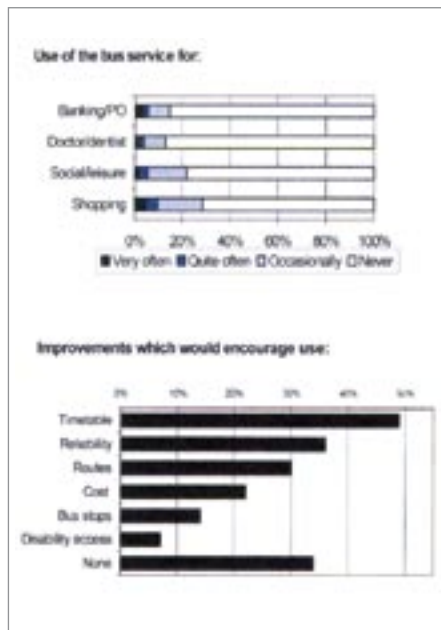
Any improvements in lighting need to be balanced against concerns for 'light pollution' and the style of lights should be in keeping with the style of the village and consistent (See also Environment Section)



Public transport

The village is served by bus connecting to Stratford-upon-Avon/Coventry (Sundays only) and Stratford-upon-Avon/Norton Lindsey (Monday to Saturday every two hours between noon and 6pm).

This has recently (11 April 2005) been extended and a better service to Stratford-upon-Avon between 08:23 and 18:35 is now available. The Parish Appraisal identifies the lack of timetable as a clear disincentive to using the service particularly amongst the 11-18 year olds.



Services

From the findings in the Parish Appraisal it is clear that the key services to our Parish are not perceived as being up to the expectations of the Parishioners.

Flood prevention

This issue was high on the list following the 1998 flood. 31% of respondents felt that the whole system of drainage and flood prevention needs to be improved and 41% felt that the current systems require better/more frequent maintenance and regular cleaning.

Following the 1998 flood the Environment Agency and County Council have made improvements to the Bell Brook, the main flood water passage through the village.

Improvements are still required to prevent 'backing up' of the flood water lower down-stream from the village following the loss of the natural flood plain in the Glebe meadow.



Utilities

(Electricity, Gas and Water supply)

The Parish Appraisal indicates that in specific areas in the Parish these services are perceived as poor.

The other service areas which were considered to be poor included snow clearance and gritting, drain and ditch clearance, and street cleaning. All of these are the County Council's responsibilities.

Objectives and Recommendations

A number of recommendations are given below. The objectives of these are:

- Any new commercial venture should provide its own car parking.
- To make the village less attractive as a 'rat run'.
- To improve the safety of the roads and footpaths.
- To encourage greater use of public transport.
- To achieve the above without destroying the attractive character of the village and to avoid excessive street furniture.



Improvements are still required to prevent 'backing up' of the flood water lower down-stream from the village...

Infrastructure

Ensure new developments include appropriate provision for footpaths and parking...



Recommendations for transport and roads

These are split into three; the categories are split by cost, difficulty of implementation and (inevitably) at the most difficult level - controversy.

Low Cost/Implementation

- Create raised 'platform' crossing on Wolverton Road between the playing fields and the Sports and Social club.
- Harden existing road narrowing on White Horse Hill.
- Create road narrowing on all other main entrances to the village.
- Square off junctions at Church Road/Smiths Lane and School Road/Smiths Lane creating partial footpath areas.
- Lobby for improved bus service in consultation with neighbouring villages.
- Ensure that any new housing developments help to dissipate traffic away from the busiest roads.



- Ensure new developments include appropriate provision for footpaths and parking.

Medium Cost/Implementation

- Improve safety of A46 junctions by making them 'Left turn only'.
- Seek improved facilities for public transport.
- Improve road lighting in specific areas, around junction with A46 and most walked areas within the centre of the village taking into account:
 - The need to use designs sympathetic to the conservation area within the village.
 - The objective not to significantly increase light pollution.
 - The installation and maintenance burden imposed on the Parish measured against benefit.

Long term/Radical options

- Extend Kings Lane/Park Lane to bypass Park Lane and link direct to Snitterfield Lane (Pigeon Green) possible extension to Wolverton Road?
- Culvert Bell Brook to widen School Road.
- Investigate One Way system through village and create on-street parking and wider pavements on one way streets.

See sketches of some of the options above on page 22.

Recommendations for services

- The Environment Agency to explore the possibility of slip-steaming the new ornamental lake and constructing a new bridge in Lodge Farm drives to cope with excess flood water in the Bell Brook
- As part of the utility service suppliers improvement plans to achieve customer satisfaction – the water and electricity supply to areas defined in the appraisal need to be addressed.
- No large-scale development in the village should be approved by SDC's planning authority until the storm water and sewage disposal system has been improved. Severn Trent Water has stated on several occasions that the system is at its maximum capacity.
- County Council to review their program for gritting, snow clearance, street, drain and ditch clearing. Parish Council to investigate the operation of some of these services.

Partners

- Highways Agency
- Warwickshire County Council Highway Department and Traffic Management
- SDC
- Environment Agency

There is a wide variety of employment both within and nearby the Parish, and a range of businesses and services available to the village.

Just within the Parish boundary to the east is situated the Stratford-upon-Avon Manor Hotel, with 104 bedrooms, bar, restaurant and leisure facilities as well as 13 conference/function rooms, the largest of which caters for 350 people.

Without the Parish, to the south, just outside the Parish boundary, is located the Ingon Manor Hotel, Golf and Country Club. As well as featuring an 18-hole golf course, it has 3 conference/function rooms, the largest catering for 120 people, bar and restaurant facilities open to non members

Other retail

Wyevale Garden Centre is located to the east of the Parish, just within its boundary and approximately 3 kilometres from the village centre. The site is extensive, has a large parking facility and features a popular restaurant.



Opposite the garden centre, on the other side of the A439, is positioned a prominent car dealership, featuring Mercedes vehicles.

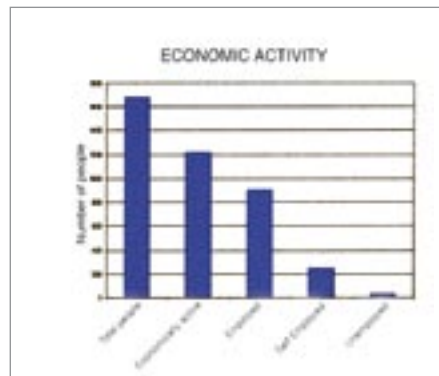
There is a wide variety of employment in the area around the village and some other opportunities within or very close to the village.

The 2001 Census

This shows the following information:

Of the 1681 people in Snitterfield:

- 1209 are economically active.
- 900 are employees.
(213 full and 687 part time)
- 247 are self employed.
- 121 with employees.
(104 full and 17 part time)
- 126 without employees.
(76 full and 50 part time)
- Only 30 are shown as unemployed.



Type of work

Of those employed (1303):

- 417 are at higher managerial level or in professional and associated occupations*.
- 311 lower managerial*.
- 106 intermediate.
- 151 small employers.
- 90 lower supervisory.
- 200 routine and semi routine occupations
- Interestingly none are shown as 'never having worked'.

*ie 55% are managerial level.

The type of industry

This shows that of the 1177 economically active:

- 53 in agriculture forestry and hunting.
- 3 mining and quarrying.
- 146 in manufacturing.
- 17 electricity and gas supply.
- 63 in construction.
- 182 wholesale and retail + repairs.
- 74 hotels and restaurants.
- 69 transport, storage and communications.
- 42 financial.
- 244 real estate, renting and business activities.
- 25 public administration, defence and social security.
- 88 education.
- 110 health and social work.

This appears to be surprisingly low given the major industries of Stratford-upon-Avon and Warwick nearby, but see the later comments in 'Job Centres'.

There is a wide variety of employment in the area around the village...



Employment

...the travel to work patterns of employees varies widely...

Travel to work

Of 1304 currently working the mode of transport used shows:

- 911 drove (car or van) and 56 as passengers in cars.
- 20 travelled by bus, minibus, coach, tram or train.
- 15 motorcycle or scooter.
- 29 bicycle.
- 76 on foot.
- 9 by 'other' means.

ie 74% used cars and 8% walked or cycled.

Distances travelled to work vary, of 1176:

- 188 mainly at home.
- 115 less than 2km.
- 106 2- 5km.
- 304 5 -10km.
- 158 10 - 20km.
- 114 20 - 30km.
- 69 30 - 40km.
- 31 40-60 km.
- 44 over 60 km.
- 42 no fixed place.
- 5 working outside the UK.

ie 25% work at home or within 2km of Snitterfield, 34% 2-10km, 23% 10-30km and only 12% work over 30km away.



Local employers

A recent survey of companies within the Parish of Snitterfield or less than 1km from its boundary revealed 14 local organisations of whom 7 responded to our questionnaire.

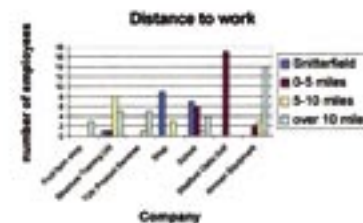
The range of businesses is wide for such a small sample including local services (retail, education and public houses) and these are the oldest established in the village, although some have changed hands recently. There are leisure facilities (hotel and golf), specialist services (consultancy, IT and testing) as well as the import, sales and servicing of heavy equipment. The most recent business of the replies started in 1995.

The replying companies employ the following:



It is difficult to draw conclusions from such a small sample – but 50% of those organisations identified did respond and their comments would indicate:

The maximum number of employees is 19; the split between part and full time has no obvious pattern, except that in the very specialist companies most are full time.



Again it is difficult to draw conclusions from a small sample, but the travel to work patterns of these employees varies widely. The furthest travel from London, Leicester and Stockton on Tees (it does not state whether they travel regularly or mostly work from home). The specialist jobs appear to draw from further away – possibly because higher wages for skilled specialists warrant the cost of travel. This seems to be a similar pattern for employees as a whole as shown by the Census figures.

Micro companies and self employed

Other research (not exhaustive) has shown that within the same area the following services are offered by micro companies:

- Beauty therapy
- Bed and breakfast
- Building
- Business consultancy
- Carpentry
- Counselling
- Decorating
- Electrician
- Garden services
- Garden/landscape design
- General household repairs
- Guitar tuition
- Homeopathy
- Interior design
- Motor mechanics
- Osteopathy
- Plumbing
- Tree surgery

Other employment opportunities

The range of work available within a short travel distance of the village (20KM) includes almost every sector of employment and at all levels.

This includes many traditional industries as well as more recent developments such as IT and call centres and ranges from work in small-to-medium size companies to multinationals such as Ford and IBM.

Job Seekers and Job Centre

Informal discussions with the nearest Job Centre in Stratford-upon-Avon indicate that:

Generally unemployment in this area is low (this is borne out by the census figures) and is usually around 1% of the working population.

Stratford-upon-Avon and district is an expensive area to live, so transport or low pay may be an issue for those seeking jobs – ie they need to travel into this area to work. Consequently there is not a large pool of claimants available for jobs and the lower paid ones (eg hotels and restaurants) have difficulty in filling vacancies.

Other social and economic factors may have an effect on the availability of applicants for work in the area.

Job Centres now have access to vacancies in other areas and Stratford-upon-Avon applicants travel to many other areas for appropriate work including:

- Alcester
- Banbury
- Coventry
- Evesham
- Gaydon
- Leamington
- Oxford
- Redditch
- Shipston
- Warwick
- Wellesbourne

Travel for longer distances is especially true of those seeking higher paid and managerial level jobs (this supports the comments made about local employers above). Job Centres are no longer only used by unskilled and lower paid workers.

Conclusions and Recommendations

- Evidence would suggest that there is very little unemployment in the village, less than 2%, well below the national average.
- The range of levels and variety of employment opportunities within 20km of the village is as wide as most areas outside London.
- Within the village there are a large number of micro businesses – 188 people work from home. Many of the micro businesses are artisan type work, but there is a good number of professional services (the introduction of broadband may increase this).
- Local companies (within 2 miles of the

village centre) provide a variety of work, this provides some employment for local people (especially casual and part time workers) but they draw from a wide catchment area.

- Travel to work takes many forms, but the majority (74%) use cars. This may be a comment on the lack of public transport, but may be more to do with the type of individual (55% carrying out managerial roles).
- The Parish Appraisal found that opinion was divided as to whether businesses should be developed:
 - 39% would like to see small businesses set up within the Parish boundaries.
 - 28% would not.
 - 31% would like to see the development of existing businesses in the Parish.
 - 26% would not.
- Anecdotal evidence and the low unemployment figures suggest that there is little demand for more employment opportunities within the village, although growth of self employment or people working from home would seem likely. This should have little detrimental impact on the problems of the village, in fact may reduce traffic flow.

Partners

- Job Centre
- Local employers

... social and economic factors may have an effect on the availability of applicants for work in the area ...



The Woodland Trust states that 'Changes to the agri-environment scheme framework across the UK will further benefit wildlife and the countryside'...



A Green Future?

Our desire is to protect and enhance the local environment. For the Parish to actively pursue the ethos of sustainable development, projects and monitoring need to be undertaken in key areas.

For example:

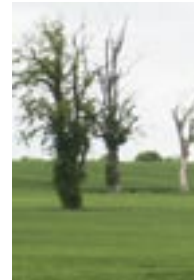
- Reduce consumption of natural resources eg, energy efficient homes, reduced car use, improved waste management, water saving, (such as re-use of run-off water from all new developments).
- Set limits on environmental impact by new housing development. Eg, there should be no increase in water run-off into the brook.
- Encourage the purchase of more local produce and grow more in allotments and gardens.
- Use environmentally friendly products in gardens and public places.
- Engage a wider group of Parishioners in environmental matters.
- Improve facilities on the allotment site with environmentally friendly rain water catchment systems.
- Work with Warwickshire County Council and local farming communities to encourage involvement in Environmental Stewardship and move towards a more sustainable agricultural industry and encourage the development of agri-environment schemes.

Rural Countryside and Land Use

Farms

There are several working farms within the Parish. Only one dairy farm remains, although there were more several years ago. Other farms are now mainly sheep and arable.

Because of the increase in arable farming where intensive farming methods are employed, there has been a decrease in recent times in the number of hedges in the Parish.



The Parish is concerned about protected trees in fields formerly used for cattle which are now ploughed and used for crops. Ploughing too close to trees can damage the roots so that the tree eventually dies.

Because of modern agricultural techniques the number of people working on the land is less. The 2001 census indicates that 53 people in the Parish are employed in agriculture, forestry and hunting. (See also employment).

As a result of the reduction in numbers of people working on the land many farmhouses are now in private ownership and not occupied by farmers or farm workers. Many farm buildings have become redundant and some are now used for commercial and business use.

Fruit Farm and local produce

Buying and growing produce locally is an important element in sustainability. Snitterfield Fruit Farm is a member of 'Assured Produce' a scheme that promotes the safe and environmentally friendly production of fruit, salads and vegetables.

Fruit from the fruit farm is sold in the farm shop and to supermarkets. Some local produce is sold in the village shop.

A small winery (shown below) of 3.2 hectares was planted in the Parish in 2000. The first harvest of grapes took place in 2003 from 600 vines. By 2007 there will be 1800 vines available for harvest. The winery is part of the Mercian Vineyards Association and the wine is bottled by Three Choirs. The winery is not organic although the proprietor avoids the use of pesticides. Herbicides may be used.

Two local smallholders sell produce from their land.

A small number of allotments are available for rent through the Parish Council. There are eight allotment plots in total and vehicular access is available from The Green. At present there is no water on the site.



Conservation

A conservation area exists within the village (shown in blue on the map below).

The Village Design Statement (VDS) provides recommendations regarding architectural detail of buildings; this is now an adopted local planning guidance note.



The Bell Brook

The brook is an essential feature of the village, necessary for the effective removal of surface water.

It also provides a valuable wildlife habitat. Measures must always be in place to ensure regular clearance and maintenance of the brook to prevent blockage and encourage plant and animal life.

Open spaces within the village

The existing character of the village is largely determined by open spaces within the square pattern of development and the surrounding Green Belt land.

This feature of open spaces within the village must be retained.



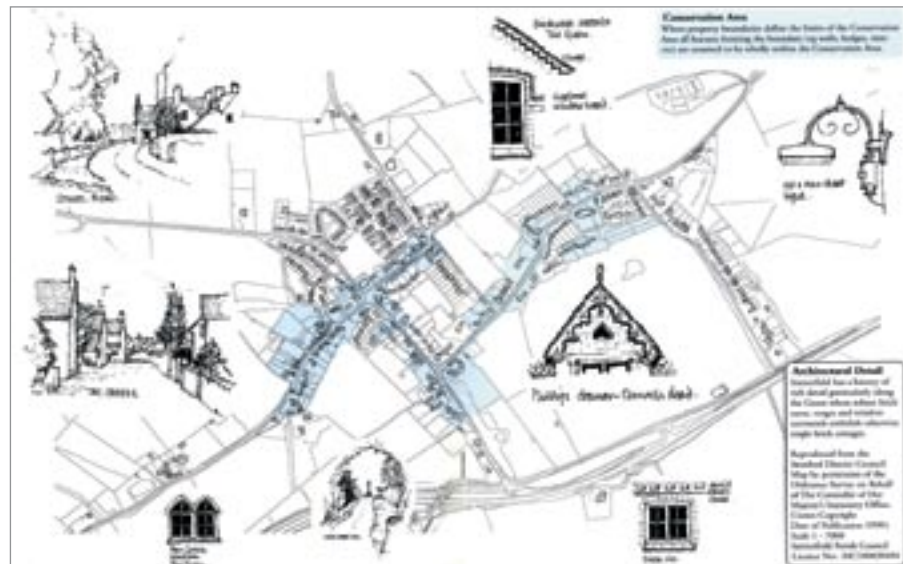
Site of Special Scientific Interest (SSSI)



An SSSI exists within the Parish boundaries (Snitterfield Bushes).

In the Parish Appraisal Parishioners felt that 'Wildlife Trust' members are doing a good job on the care and maintenance of the SSSI.

Conservation map below is reproduced from the VDS.



The Conservation group has expressed concern over protected trees and hedges in the Parish...



The Natural Environment

The Conservation Action Group and the Footpaths Action Group were established following publication of the Parish Appraisal.

The Brief of the Footpath Action Group was to:

- Ensure that hedges are not allowed to restrict pavement width.
- Investigate complaints that Bell Brook and the garages behind Bearley Road are inadequately maintained.
- Make available maps of footpaths and rights of way in the Parish.
- Follow up the long-term plan to produce a booklet of circular walks as well as a map of footpaths and rights of way within the Parish.
- The group now meets regularly; members are currently walking all the paths and checking that they are clear.
- Members walking the paths will photograph any problems eg broken styles, gates etc

and Warwickshire County Council will be informed of any damage.

- Members will also record any old trees that require protection.

The Conservation Action Group (which includes the Footpaths Action Group) is applying for membership to the Warwickshire Wildlife Trust. The group is actively seeking to protect and conserve the public footpath known as Monarch's Way.

The group has also expressed concern over protected trees in the Parish. The Conservation Action Group represent the Parish in respect of tree conservation and they liaise with SDC.

The progress of the hedgerow survey was reported in the summer 2004 edition of *The Snipe*.

The 1997 Hedgerow Regulations in England and Wales aim to protect hedgerows in the countryside. Most hedges are covered by the Regulations provided that they are more than

20 metres in length and/or form part of a longer stretch of hedgerow. Removal of hedges is generally prohibited although in certain circumstances local authorities may issue a 'removal notice'.

The view of the Woodland Trust is 'to see local authorities in England and Wales exercising powers under the Hedgerow Regulations to the full in order to protect important and historic hedgerows.' They also 'support the planting of new hedgerows and the replacement of those which have been lost as part of action to deliver further aesthetic and habitat creation activity on our own sites'. In addition they 'wish to protect existing hedges from livestock or agricultural chemicals' and add that 'flailing of hedges during the breeding season or during autumn when hedges offer vital over-wintering food sources should be avoided at all costs'.

The Garden Club

The Club, supported by the Parish Council, maintains five planters in the village. Three opposite the village shop and two between the school and The Foxhunter.

Recent developments

Since publication of the Appraisal, Stratford District Council has introduced:

- a black box system for cans, bottles, paper and textiles.
- green wheelie bins for green waste (delivered to residents February 2005)

Below: The same view – before and after hedges were removed.



- upgraded the local waste recycling centre at Burton Farm (WCC).
- a 'wood chipping' service (WCC).
- the Parish Council has agreed to provide more litter bins for the village.

(This information was published in the summer 2004 edition of *The Snipe*).



Street Lighting

The need for more street lighting in specific roads is a matter that has appeared on the Parish council agenda for several meetings.

At present the village enjoys relatively low levels of light pollution. While there is a need to consider safety and infrastructure, this needs to be balanced to minimise light pollution.

In addition the appropriate style, height, locations and number of lamps needs to be considered. These should be of similar style throughout the village as far as this is possible, and of a design that is in keeping with the character of the village.

Cycling

Although the Village Appraisal did not ask questions about cycling or cycle paths, in an attempt to reduce the reliance on the car, the use of cycle ways to Stratford and Warwick should be considered.

Recommendations

Environment

- Ensure adequate protection of conservation area(s).
- Reinforce and/or extend conservation area(s) within the village in line with local plan policy.
- Ensure maintenance of open spaces.
- Ensure regular clearance and maintenance of Bell Brook.
- The Conservation Action Group, hedgerow survey, to identify all hedges in the Parish and inform the authorities of any which have been damaged.
- Co-operation with CPRE on the protection of hedgerows and trees, also the wildlife habitat.
- Encourage the planting/replacement of hedges.
- Avoid flailing of hedges during the breeding season or during autumn and avoid reduction of hedgerow dimensions.
- Encourage the practice of traditional hedgerow management such as coppicing or laying.

Recycling (see also Government and EU Policy on recycling)

- Use the Garden Club to promote green policies such as composting, water conservation and horticultural education and awareness.
- The Village Appraisal states that '*while newspaper recycling in the Parish is generally regarded as good, there are clearly issues with outlying roads being*

omitted from collections. Nearly half of residents said that they would like to see a recycling point installed, with the youth hut and the shop being preferred locations'. This needs to be considered.

- Many of the concerns regarding recycling have been addressed since the findings of the Village Appraisal were published. However, a point within the village still needs to be carefully considered along with any implications associated with its location.

Facilities

- Review street lighting to improve pedestrian safety. (Also note comment on light pollution)
- Any street furniture should be chosen carefully to enhance the character of the village.

Transport

- To encourage people to use an alternative to cars there could be an emphasis on safe, convenient and well-maintained cycle ways, footpaths and improved public transport. (See County Council/National Policies).
- The County Council and SDC to consider the possibility of converting the Monarch's Way between Snitterfield and Stratford-upon-Avon; this could possibly form the route of a new cycle path.

Partners

- Snitterfield Parish Council
- Stratford on Avon District Council (SDC)
- Warwickshire County Council



The Development of the village

The Parish Council will work with the District and County Councils to ensure the requirements of this plan are adopted...



Housing

In the Local Plan Snitterfield is identified as a 'Local Centre Village'.

Over 45 houses have been built in the village during 2002 to 2003; this represents a 10% increase in the housing within the village boundary. These houses failed to address the housing needs as defined in the Parish appraisal, in that they were all open market properties with selling prices from £260,000 to £950,000.

The appraisal of 2001 was clear in its findings. *'The main need for the future is smaller, affordable housing'* This is the view of the respondents to the question G1.2 in the questionnaire supplied to every household in the Parish. It is largely re-enforced by the results of the Parish Plan questionnaire (see page 22).

The overwhelming view of the respondents to the 2001 questionnaire was that at the present time the number of houses in the village was correct (50%) and that the current types and mix of housing was about right (50%).

In addition it is generally agreed that the format of any development should follow the linear character of the village as single houses or small groups of houses, of not more than 5 houses. Conversion of existing 'old barns' is also recommended.

Recommendations

- Presumption against luxury housing.
 - Presumption against large family homes.
 - No large developments over the recommended in-fill policy in the Stratford on Avon District Local Plan 1996-2011 for Local Centre Villages.
 - No developments which fail to comply with the Village Design Statement guidelines for 'Village Design and Open Spaces'.
 - All developments must comply with the needs of the Parish as defined in the Parish Appraisal.
 - All developments must follow the traditional layout of the village, ie Linear Development.
 - Development must comply with the Local Plan policies as defined in the Stratford on Avon District Local Plan 1996-2011. Special note should be made to respect the PPG 2 Green Belt and National Planning Guidance PR 2 Policy of the Local Plan as the Parish lies within the Green Belt and designated as a Special Landscape Area. Policy EF.2.
 - Developments should be located and designed to ensure ease of pedestrian access to the village facilities, thus reducing the need for vehicle use. Off-street parking is a major requirement and must be used to ensure pedestrian safety.
 - The Parish Council will work with the District and County Councils to ensure the requirement of this plan which is based on The Village Design Statement and Parish Appraisal, (both of which are adopted planning and policy supplementary guidance notes), is adopted and implemented.
 - The District council shall use development control measures to preserve the rural character of Snitterfield and to encourage the enhancement of the facilities and infrastructure of this Warwickshire village.
 - Wider infrastructure issues must be addressed when any planning applications are considered (eg sewers and drains)
- See also the results of the Parish Plan Questionnaire on page 22.



The Development of the village

Partners

- Snitterfield Parish Council, Stratford on Avon District Council and Warwickshire County Council.
- The partnership is based upon good communications, co-operation and involvement in the development of a practical action plan to achieve the agreed objectives during the period of the Stratford on Avon District Local Plan 1996-2011.

Other Issues

The Parish is located close to the main centres for the emergency services being served by Stratford-upon-Avon and Warwick. Response times are on average 10 to 15 minutes for Ambulance and Fire appliances.

Police coverage has been highlighted as a weakness in the Parish Appraisal with 40% describing the service as poor/bad/terrible the remainder withheld judgement, having no experience of the service.

Informing the Parish about issues that impact upon the Parish and the services received has been achieved by *The Snipe* newsletter, a publication which was born out of the Parish Appraisal. It is produced and distributed by a team of volunteers within the Parish.

The new Parish Council Notice board is now able to display the minutes of meetings and planning issues, forthcoming events and local support documentation.

The village web site www.snitterfield.com is another medium where Parish and local groups are able to inform the Parish and the world about their activities.

Visitors to the village come for many reasons and comment has been made about car parking facilities. The village has no public car park, only a small lay-by at the War Memorial. Because the Parish is served by many public footpaths including The Monarchs Way and attracts visiting ramblers/walkers, we need to consider whether additional more formal parking facilities should be provided.

Recommendations

- Action needs to be agreed with Warwickshire Police Authority on how to improve the Parishioners perception of their service.
- Continued support for *The Snipe* newsletter and other forms of communication with Parishioners.
- There needs to be a review of car parking facilities which would enable walkers/ramblers to park their vehicles safely and securely and not obstruct the highways around the village.

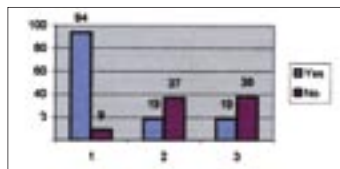
Partners

- Emergency services (Police, Ambulance and Fire)
- Warwickshire Police Authority
- Snitterfield Parish Council, Stratford on Avon District Council, Warwickshire County Council
- Warwickshire Primary Care Trust

Informing the Parish about issues that impact upon the Parish and the services received has been achieved...

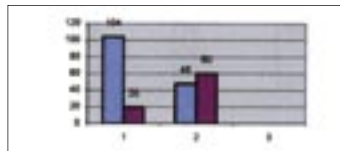


Questionnaire Results



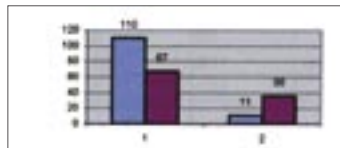
VILLAGE HALL

	YES	NO
Refurbish	94	9
Demolish	19	37
Build new	19	38



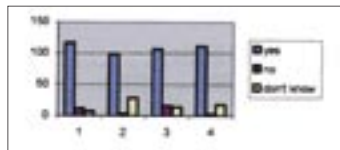
SURGERY

	YES	NO	N/A
Use	104	20	15
Satisfied	48	60	



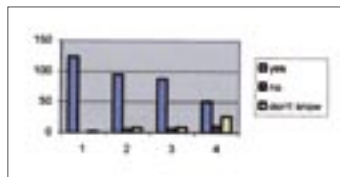
LEISURE, SPORTS, PLAYING FIELDS

	YES	NO
Adults	110	11
Children	67	36



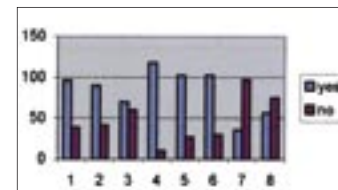
CRIME

	YES	NO	DON'T KNOW
Higher police profile	116	12	7
Better response	98	4	29
Resident constable	106	16	14
Increase neighb'r	111	3	18



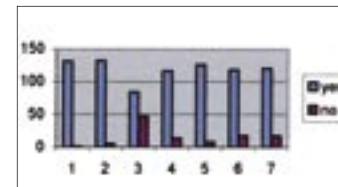
COMMUNICATION

	YES	NO	DON'T KNOW
The Snipe	124	0	2
The Link	95	6	8
Parish Notice B'd	88	7	9
Website	51	11	27



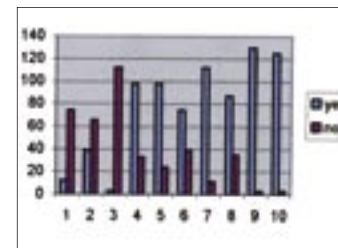
INFRASTRUCTURE

	YES	NO
More calming	96	39
Redesign calming	90	42
Redesign junctions	70	60
Dissipate traffic	118	10
Improve bus	102	27
A46 left turns only	102	30
Mini roundabout	36	97
Traffic flow system	56	75



ENVIRONMENT

	YES	NO
Protect conserv area	131	1
Improve footpaths	132	5
Recycling point	84	47
Restrict new deve	116	14
Local produce	126	8
Cycle-ways	118	18
Bus service	120	17



DEVELOPMENTS

	YES	NO
Luxury housing	12	74
Large family home	39	66
Large developments	3	112
Affordable housing	98	33
Small family home	98	24
Traditional layout	74	39
Off-road parking	112	11
Small dev -5 house	87	35
Open spaces	130	3
Extension harmony	125	3

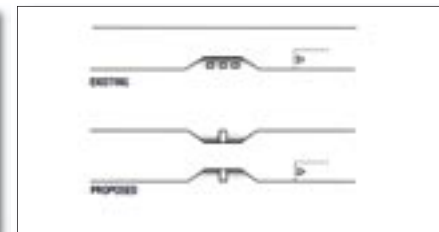
SKETCHES OF OPTIONS FOR RE-ALIGNMENT AND OTHER ALTERATIONS OF ROAD JUNCTIONS



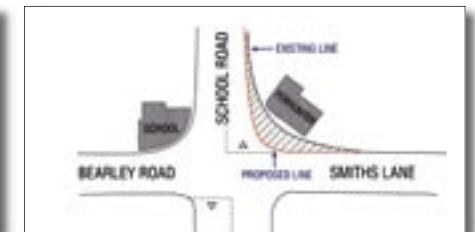
Smiths Lane/Church Road EXISTING Junction



Smiths Lane/Church Road PROPOSED Junction



White Horse Hill Traffic Calming



School Road/Bearley Road/Smiths Lane EXISTING and PROPOSED Junction

This action plan is no good if it is all talk and no action. At every stage of this project the people told us what they would like to see happen. Within this action plan some of these ideas have been translated into projects and tasks for the Parish Council, Stratford District Council and Warwickshire County Council. They need to be prioritised according to their feasibility and costs.

Urgent

- Traffic calming to reduce speed and make the village less accessible as a 'rat run'
- Redesign of key road junctions to improve safety
- Reduce or impose lower speed limits
- Improved crime prevention
- Improved control over developments and alterations to properties
- Protection of the environment and retention of our open space policy
- Improve public transport and reduce the reliance on private cars
- Determine the long-term future of the Village Hall
- Retain and expand the local surgery

Important but more long term

- Improvements to the junctions on the A46
- Reduce the noise levels on the A46 by introducing a quiet running surface
- Flood prevention
- Hedgerow Surveys
- Recycling
- Sports club facilities to be expanded
- Communication systems for all age groups to keep the Parish informed
- Car parking. Off-road parking to be planned at key locations
- Street lighting to be updated or improved
- Retail outlet to be supported and expanded

All actions shown in blue have been taken on by Snitterfield Parish Council at the adoption meeting on 15 September 2005.



Facilities/Transport

FACILITIES

Action	How it will be tackled	Priority	Partners	Timescale	Lead responsibility	Resource implication
LOCAL FACILITIES						
The Parish has sufficient facilities for the current level of activities that exist	PC and Sports club will monitor the facilities that are currently available to meet the needs of all ages/segments of the Parish	Medium	PC, Sports club	annually on going	PC	PC annual report at the AGM
POST OFFICE						
Due to changes in the circumstances within the Postal service it is unlikely a Post Office could be viable.	No action Observe the progress of the Community Post Office in Bearley					
VILLAGE HALL						
Consideration to be given to modernising or relocating the ageing village hall.	A broad based group should be set up to evaluate the options.	Medium	PC, VHMC	1-3 years (with a start to be made within 1 year)	VHMC	Funding via lottery, PC, WRCC SDC etc
OUR VILLAGE SHOP						
This is the main focal point for many of the villagers and enables anyone to advertise community activities	By supporting the village stores and promoting the local produce. By using the notice board facilities	Medium		on going	Owners	
SURGERY						
It is important that a medical facility is kept in the Parish	Liaison by the PC and the Practise manager with support of the Warwickshire Primary Healthcare Trust (WPHT)	High	PC, Practise WPHT	1/2 years 6 monthly meeting	PC and Practise Manager	

INFRASTRUCTURE – TRANSPORT AND ROADS

NEW TRAFFIC CALMING						
Traffic calming	New raised speed platform in Wolverton Road between the Sports Club and the playing field	High	WCC and PC	Now-2005	PC	PC to fund 50% via the Precept set for 2006/7
EXISTING TRAFFIC CALMING						
Improvements to the existing traffic calming system	Harden existing narrowing on White Horse Hill and the speed ramps on Smiths Lane and Bearley Road	High	WCC and PC	2006/7	PC	PC to fund 50% via the Precept set for 2007/8
ROAD NARROWING						
Create new road narrowing on all entrances to the village	New traffic calming project to deter traffic from using the village as a rat run	High	WCC and PC	2006/7	PC	PC to fund 50% via the Precept set for 2007/8
JUNCTIONS						
Redesign the junctions with Smiths Lane at School Road and Church Road	Square off the junctions to prevent motorists from entering Smiths Lane without stopping. Change priority to a Stop sign and make motorists stop at the line. (Improved safety) Also creating additional pavement area at both locations.	High	WCC	2006/7	WCC	Funded by WCC to improve road safety and improve pedestrian use in Smiths Lane

TRANSPORT AND ROADS continued

Action	How it will be tackled	Priority	Partners	Timescale	Lead responsibility	Resource implication
BUS SERVICE						
Lobby to improve the local bus service in consultation with neighbouring villages	User group set up support from the PC and WCC	High	PC and WCC	2005	WCC	User group to monitor the PC and current bus service and suggest improvements to WCC and the PC to assist by co-ordinating the project
NEW DEVELOPMENTS						
To ensure that all new developments are designed to dissipate traffic away from the busiest roads and that off-street parking and pavements are included in the designs	All application for new development in the village must comply with the Village Design Statement guidelines	High	PC and SDC	Now ongoing and current	SDC	Greater involvement by SDC planning officer with the PC and the applicant
MEDIUM COST/IMPLEMENTATION						
SAFETY						
To improve safety of both A46 junctions by making them 'left turn only'	By changes to the road markings and signage on the A46. Install central barrier to prevent right turns	High	WCC and PC	2006	WCC	Changes could be made when the A46 is due to be resurfaced with a 'quiet running surface' to comply with the new regulations for noise pollution
LIGHTING						
To improve lighting in specific areas, around the junctions with A46 and most walked areas within the centre of the village	By an improvement plan set up by the PC and WCC and budgeted over an agreed period. To use designs sympathetic to the conservation area and not to increase light pollution	High	PC and WCC	2006	PC	PC to precept for the improved lighting and seek financial support from WCC
REDUCE SPEED LIMITS						
Reduce the speed limits to 20mph in the Village (particularly The Green, no pavements, narrow road, often with cars parked on one side)	WCC to make this part of their traffic management project and improve road safety	High	WCC and PC	2006/7	WCC	New signs at the entrance to the village and repeater signs within the village.
SIGNS						
Introduce flashing speed signs	WCC to introduce solar powered speed indicator signs in Smiths Lane	High	WCC and PC	2006/7	WCC	PC to include the cost of two signs in the precept
NEW SPEED LIMIT						
Speed limit on the road between Snitterfield and Bearley	WCC to introduce a 40mph speed limit on this stretch on road for safety reasons and because of the SSSI-nature reserve and wildlife crossing the road	High	WCC	2006/7	WCC	WCC cost of signage and regulations to change the current 60mph to 40mph

Environment

ENVIRONMENT

Action	How it will be tackled	Priority	Partners	Timescale	Lead responsibility	Resource implication
CONSERVATION AREA						
The Parish need to conserve and protect the current area	The PC and the Conservation Group will monitor the existing area and will report any inappropriate actions in the conservation area	High	PC, CPRE, SDC	Current and on going reporting at PC meetings	PC Supported by the Conservation Group	Monitored by the Conservation Group and Policed by the SDC CPRE and PC
OPEN SPACES						
Ensure maintenance of all open spaces in the Parish.	PC will ensure the Village Design Statement (VDS) guidelines are upheld and no developments are allowed to impact upon these open spaces in the Parish. The conservation group will be informed of all actions which endanger these areas	High	PC and SDC	Current and on going reporting at PC meetings	PC Supported by the Conservation Group	PC. Vetting of all applications for new development or changes to existing properties that may endanger the open space policy
BELL BROOK						
Maintenance by the responsible organisations and repairian owners to reduce the risk of flooding	PC will report to WCC, SDC any problems reported at PC meeting which are not the responsibility of the repairian owners that are likely to impede the flow of the brook	High	PC, WCC, SDC Environment Agency	Now on going reporting at PC meetings	PC	PC will report problems to WCC who will co-ordinate any work need
HEDGEROWS, TREES AND WILDLIFE HABITAT						
These will be protected and any actions that damage or remove them will be reported to the local authority.	Any actions which impact upon the hedgerows, trees and wildlife habitat will be reported to the PC who will contact the appropriate authority requesting action to prevent loss or damage to these areas	High	PC, SDC, CPRE	Current and on going reporting at PC meetings	PC, supported by the Conservation Group	PC will report problems to SDC who will co-ordinate any work need
HEDGEROW MANAGEMENT						
To encourage good hedgerow management which ensures hedges are protected and replanted. That Flailing of hedges is restricted during the breeding season, and traditional hedge laying and coppicing to be encouraged	The Conservation Group will monitor the hedgerows in the Parish and report any damage or loss of a hedgerow to the responsible authority. They will recommend action to redress the situation	High	PC SDC, WCC CPRE	Current and on going reporting at PC meetings	PC supported by the Conservation Group	Enforcement by the SDC to correct the situation. Grant aid for landowner to replace dead and damaged trees and hedgerows.
RECYCLING						
Green Policies to be supported by the Parish The recycling of all garden waste to be promoted by the PC, Garden Club, School and Sports Club	The local groups will publicise green policies and opportunities for all types of garden waste recycling The PC will support the SDC in their recycling programme	High	PC, SDC	Now	SDC supported by PC and local groups	Support of local and national policies for the recycling of all waste product from the home. The local groups and PC should promote this objective
Recycling of all Plastic, metal cans, glass, paper and cardboard	Discussions with WCC and SDC to start roadside collection service	Medium	PC, SDC and WCC	Now and on-going	SDC supported by PC and WCC	Funding via the council tax and PC precept
PUBLIC TRANSPORT						
To encourage people to use an alternative mode of transport to the car	To set up a transport users group who will investigate and report on how to increase the use of the local public transport system. Also to recommend how other methods eg, Cycling, Walking, etc can be encouraged safely.	High	PC, WCC and SDC	Current and on going reporting at PC meetings	WCC	After the report from the user group, a list of actions to improve the existing public transport system. Also a report on the use and introduction of cycle ways to the main centres for work, shopping, schooling etc.

DEVELOPMENT

Action	How it will be tackled	Priority	Partners	Timescale	Lead responsibility	Resource implication
NEW DEVELOPMENT All new developments must comply with the needs of the Parish and the Village Design Statement	The PC and the Stratford District Council will monitor all applications Policy COM 1 will apply to all new applications.	High	PC, SDC	Current and on going reporting at PC meetings	SDC planning dept	Close monitoring of all new build application by the planning officer and closer liaison with the PC
EXTENSIONS Extensions to existing building must follow the Village Design Statement guidelines	The PC and the Stratford District Council will monitor all applications Local Plan Policy will apply to all applications.	High	PC and SDC	Current and on going reporting at PC meetings	PC	PC. Vetting of all applications for new development or changes to existing properties that may endanger the character of the village or the surrounding open countryside
AFFORDABLE HOUSING The prime need in the Parish is for affordable housing or small family homes	The PC, with the help on the SDC Housing department conduct a survey to ascertain the number of potential owners of small family homes or affordable houses for rent or part-ownership in the village. Criteria for ownership/rent will be based on local connections with Snitterfield.	High	PC, SDC Housing Ass	Current and on going reporting at PC meetings	PC	PC will work with the local Housing Association officers to produce the numbers of houses and types required to meet the needs of the Parish

OTHER ISSUES

POLICE COVERAGE This is considered a weakness by the Parish and needs to be improved	Relocate one of the Community Police Officers into the Parish	High	PC, Local Police Authority	Current and on going reporting at PC meetings	Warwickshire Constabulary	Relocation costs for one Community Police Officer
COMMUNICATIONS Keeping the Parish informed about key issues and events is a major issue and needs to be performed regularly in a format suitable for everyone	The PC will, use the following system to inform the village of important issues and events 1) Village notice board 2) Village web site 3) Village publications, Snipe and Link	High	PC	Current and on going reporting at PC meetings	PC	PC will make reservation in the annual budget for financial support for the three methods of displaying/communicating Parish issues and events
CAR PARKING There is a shortage of car parking facilities in the village therefore visitors, parents taking children to school or patrons of the village store cannot always park safely	Survey the parking at peak times and develop a pattern of how vehicles are parked and for how long. Request support from WCC and the Police on how to improve the safe parking of vehicles in key areas of the village	Medium	PC, WCC Warwickshire Constabulary	Current and on going reporting at PC meetings	PC	PC will work with the local authorities and precept for improvements in traffic management

PC = Parish Council, WCC = Warwickshire County Council, SDC = Stratford District Council

