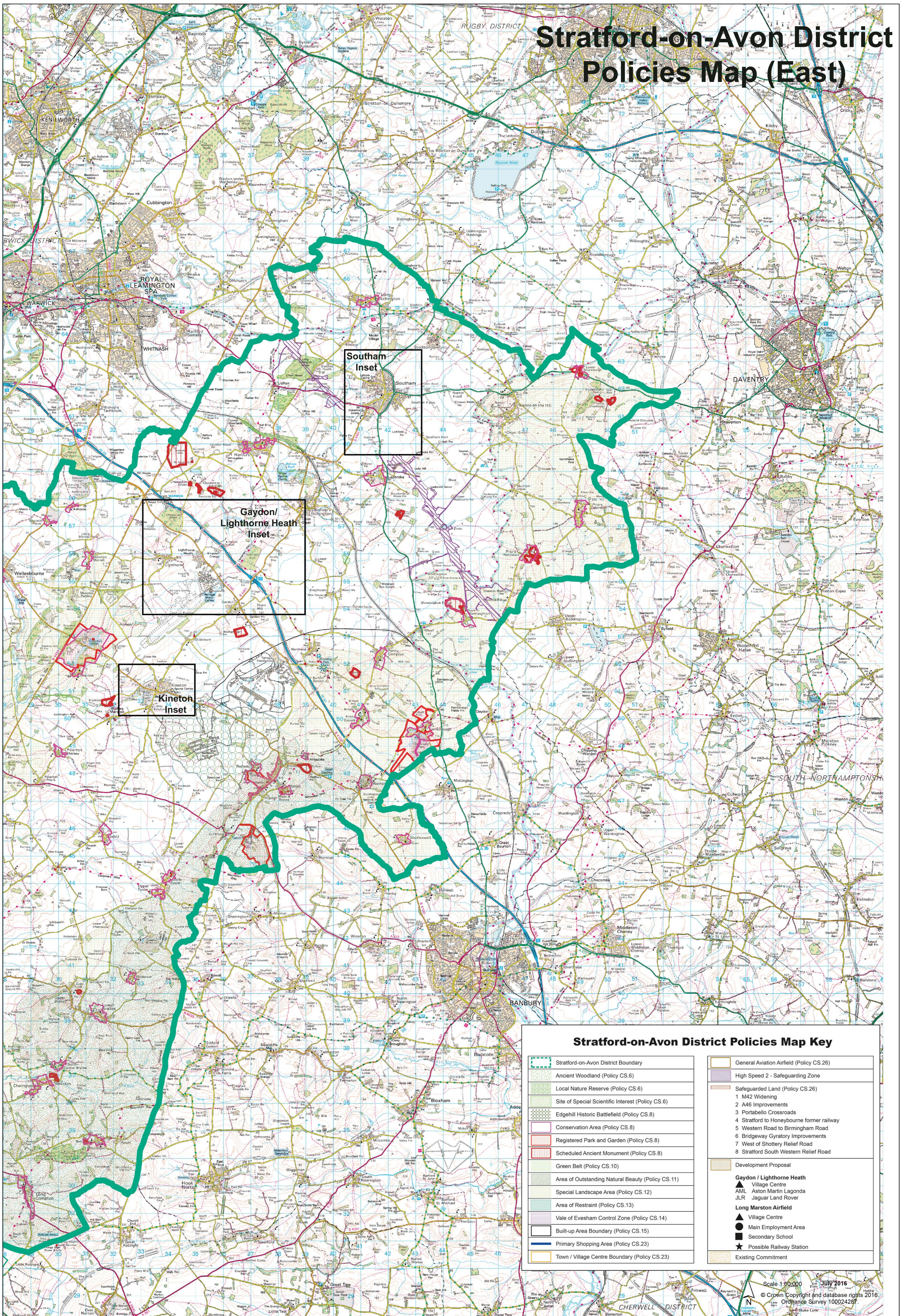


Stratford-on-Avon District Policies Map (East)



Stratford-on-Avon District Policies Map Key

	Stratford-on-Avon District Boundary		General Aviation Airfield (Policy CS.26)
	Ancient Woodland (Policy CS.6)		High Speed 2 - Safeguarding Zone
	Local Nature Reserve (Policy CS.6)		Safeguarded Land (Policy CS.26)
	Site of Special Scientific Interest (Policy CS.6)		1 M42 Widening
	Edgehill Historic Battlefield (Policy CS.8)		2 A46 Improvements
	Conservation Area (Policy CS.8)		3 Portabello Crossroads
	Registered Park and Garden (Policy CS.8)		4 Stratford to Honeybourne former railway
	Scheduled Ancient Monument (Policy CS.8)		5 Western Road to Birmingham Road
	Green Belt (Policy CS.10)		6 Bridgeway Gyrotary Improvements
	Area of Outstanding Natural Beauty (Policy CS.11)		7 West of Shottery Relief Road
	Special Landscape Area (Policy CS.12)		8 Stratford South Western Relief Road
	Area of Restraint (Policy CS.13)		Development Proposal
	Vale of Evesham Control Zone (Policy CS.14)		Gaydon / Lighthorne Heath
	Built-up Area Boundary (Policy CS.15)		▲ Village Centre
	Primary Shopping Area (Policy CS.23)		▲ML Aston Martin Lagonda
	Town / Village Centre Boundary (Policy CS.23)		▲JLR Jaguar Land Rover
			▲ Long Marston Airfield
			▲ Village Centre
			● Main Employment Area
			● Secondary School
			★ Possible Railway Station
			■ Existing Commitment