

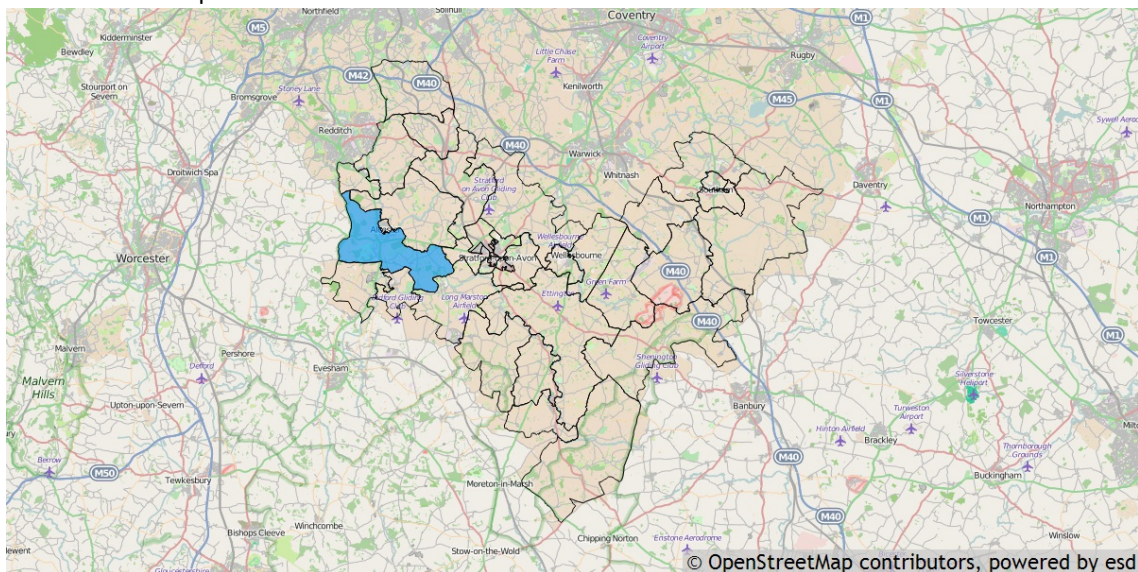
Basic facts about Alcester and Rural 2015 election Ward

This report provides a summary of the latest available information on the demographic and socio-economic make-up of the Alcester and Rural 2015 election Ward within Stratford-on-Avon. It looks at the population structure and provides information on the economic, housing and educational achievement of the 2015 election Ward.

This report is part of a series of reports available from the Local Government Association's LG Inform Plus service. Other free reports include a demographic and economic profile of Stratford-on-Avon and a health and wellbeing profile which enables a side by side comparison of all 2015 election Wards in Stratford-on-Avon.

If you want to be able to create your own tables, charts and maps for 2015 election Wards and other areas within your authority's boundaries, or build a custom small area report using the full set of national and local data stored in our database, why not subscribe to LG Inform Plus and access these and many other useful tools. To find out more about our service please telephone 020 7664 3195, email: esd-toolkit@local.gov.uk or take a look at <http://about.esd.org.uk/subscription-benefits>.

Alcester and Rural is one of the 36 2015 election Wards of Stratford-on-Avon. It has an area of 4,418 hectares which represents 4.52% of the total area of Stratford-on-Avon District.



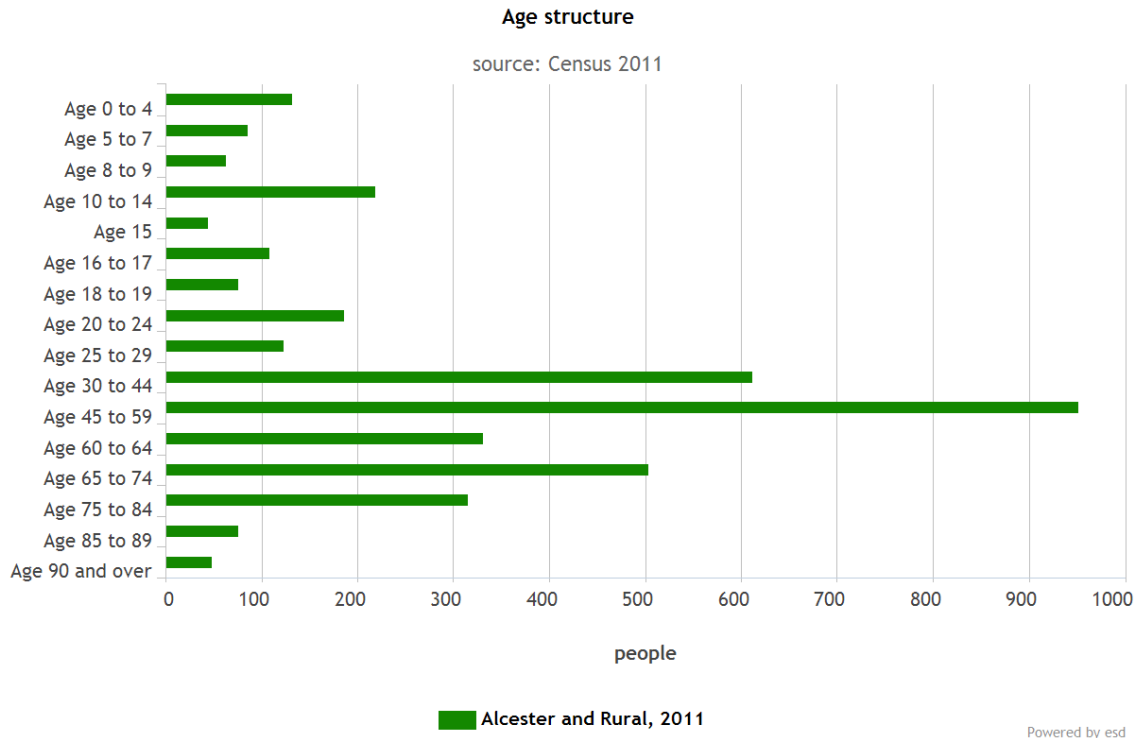
Residents

Alcester and Rural has a resident population of 3,874 which represents 3.22% of the total Stratford-on-Avon resident population of 120,485.

Alcester and Rural's resident population is 50.8% female and 49.2% male.

Age

The mean age of the Alcester and Rural 2015 election Ward population is 46 years compared to a mean age of 44 years for residents in the whole of Stratford-on-Avon. The predominant age band in Alcester and Rural 2015 election Ward is Age 45 to 59 which represents 24.57% of the population.

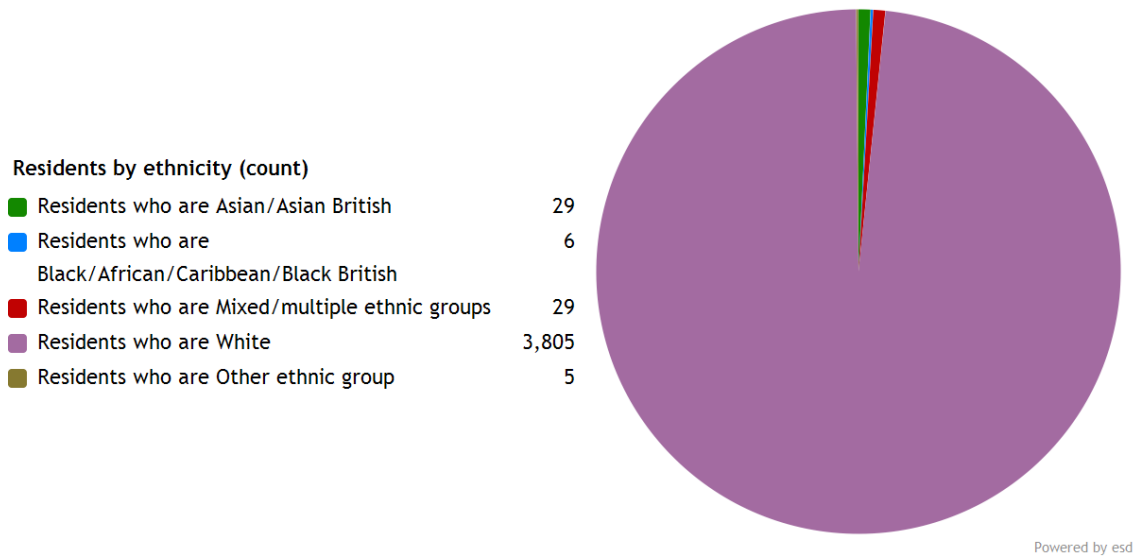


Ethnicity

The largest ethnic group is 'Number of usual residents who are White' with 98.2% of the 2015 election Ward's population. That compares with a figure of 97.4% for the District as a whole, 92.7% for the Warwickshire County and 82.7% for all of West Midlands.

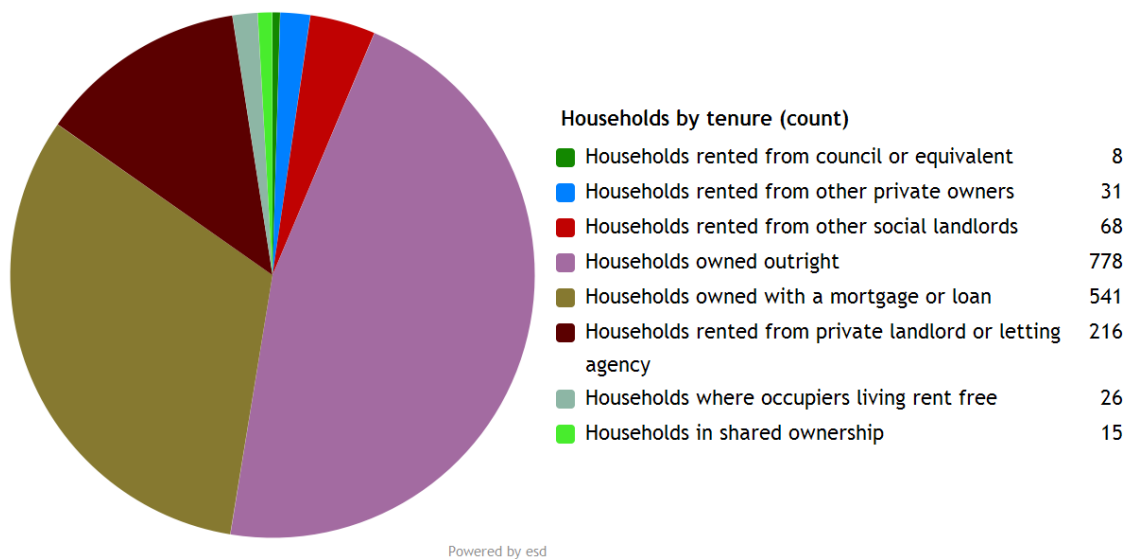
The second largest ethnic group is 'Number of usual residents who are Mixed/multiple ethnic groups' with 0.7% of the 2015 election Ward's population. That compares with 1.0% for the District as a whole, 2.4% for the Warwickshire County and 2.3% for all of West Midlands.

The ethnic split of Alcester and Rural 's residents is shown below.



Households

Alcester and Rural 2015 election Ward has 1,683 households, which represents 3.24% of Stratford-on-Avon's 51,928 households. The household split by tenure is shown below.



The largest number of households lives in 'Number of all households - Owned outright' accommodation with 46.2% of the 2015 election Ward's households. That compares with 39.1% for the District as a whole, 34.5% for Warwickshire County and 35.4% for the whole of West Midlands.

The second largest number of households lives in 'Percentage of all households - Owned with a mortgage or loan' accommodation with 32.1% of the 2015 election Ward's households. That compares with 32.7% for the District as a whole, 35.5% for Warwickshire County and 32.0% for the whole of West Midlands.

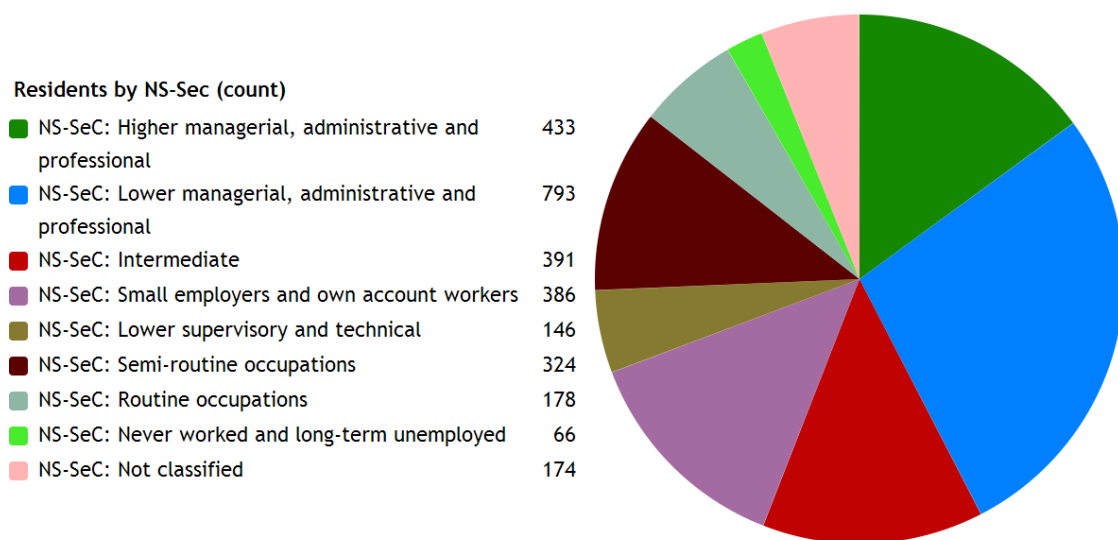
The 2015 election Ward has 101 households with dependent children aged 0 to 4. That represents 6.00% of the 2015 election Ward's households.

391 households in the 2015 election Ward have 'Dependent children in household: All ages'. That represents 23.23% of the 2015 election Ward's households.

Employment

The following chart provides a breakdown of the Alcester and Rural 2015 election Ward by socio-economic classification for all residents aged 16 – 74.

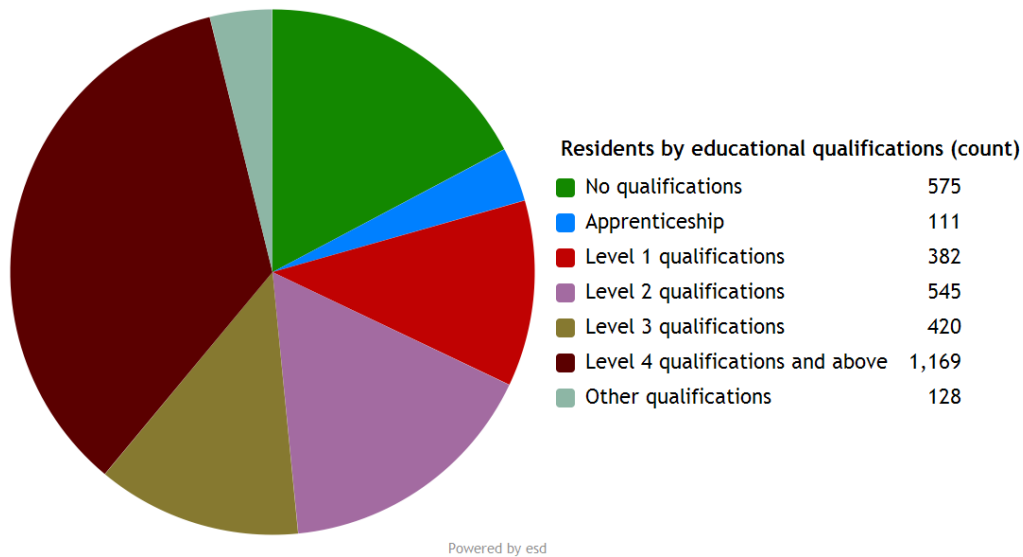
The National Statistics Socio-economic Classification (NS-SEC) provides an indication of socio-economic position based on occupation. It is an Office for National Statistics standard classification. To assign a person aged 16 to 74 to an NS-SEC category their occupation title is combined with information about their employment status, whether they are employed or self-employed, and whether or not they supervise other employees. Full-time students are recorded in the 'full-time students' category regardless of whether they are economically active or not.



Powered by esd

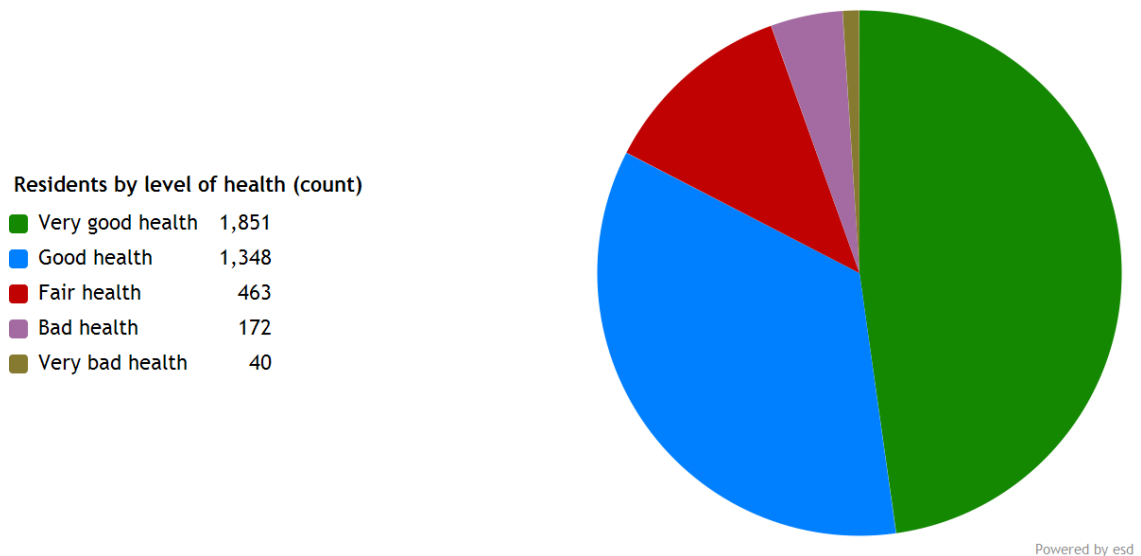
The largest group is 'National Statistics Socio-Economic Classification - 2. Lower managerial, administrative and professional occupations' representing 20.47% of the 2015 election Ward's population.

Education



30.18% of Alcester and Rural 's residents have achieved level 4 qualifications and above compared to 23.30% in West Midlands as a whole and 14.84% of Alcester and Rural 's residents have no qualifications compared to 26.60% in West Midlands .

Health



Alcester and Rural has 172 (4.4%) residents that report being in bad health and 40 (1.0%) residents that report being in very bad health.

Its ranking for the number of residents in very bad health is 27 (out of 36 2015 election Wards) within Stratford-on-Avon.

Further information

This report provides a selection of information about your authority. To get more information and create

charts, tables and maps for your own reports, you could consider subscribing to LG Inform Plus. See <http://about.esd.org.uk/subscription-benefits> or contact the LG Inform Plus team at esd-toolkit@local.gov.uk with any queries. Subscriptions go towards supporting the sustainability of the local government information standards and LG Inform Plus tools for the benefit of the whole sector.

References

This report was generated using data from:

[Office for National Statistics: Census 2011](#)