

# Online — a newsletter for people involved in community safety in Stratford District

---

## In this issue

[Foreword - Paul Lankester](#)

[Bobbies on bikes](#)

[Wellesbourne Action Group launch](#)

[CHARM in Stratford](#)

[Changes in Police personnel](#)

[Studley/Henley news](#)

[Tackling alcohol related disorder](#)

[Shipston news](#)

[PCSO Contacts - Stratford](#)

[Stratford Crime statistics - 2006/07 Q.1](#)

## How to read Online

Online is an electronic publication, there are several ways you can browse through:

1. Click on any blue links you see
2. Using the bookmark index on the left hand side of the screen
3. Using the forward and backward arrows at the bottom of the screen



*keeping Stratford safer*

[Click here to continue](#)

# Online — a newsletter for people involved in community safety in Stratford District

---

## Foreword - Paul Lankester

---

Chair, Stratford Crime and Disorder Reduction Partnership



Welcome once again to the Stratford edition of Online. Thanks to all who gave feedback on the last edition. It has been welcome and we have taken the many constructive suggestions on board.

There are several forthcoming issues that will have implications for community safety in Stratford. Much of the work in the Community Safety Partnership is seeking to ensure these changes do not adversely affect you or your community. These include proposals to restructure police forces. Stratford Community Safety Partnership has long had a commitment to local policing which has done so much to make the area a safer place to live and work. A priority for us is to ensure that this will not be compromised in any new arrangements.

Safer Neighbourhoods is one of the government initiatives that could impact on the way our area is policed. The approach, led by Warwickshire Police, is scheduled to be rolled out across the whole county by November. This roll out is based on the pilot operated in Stratford District over the past year.

So what is the Safer Neighbourhoods agenda about?

Essentially, Safer Neighbourhoods is about providing policing teams dedicated to specific geographical areas; in the case of Stratford, these continue to be based on the four council area committees (Arden, Avon, Dasset and Stour).

The neighbourhood teams are locally accountable and accessible and comprise constables, special constables and police community support officers. The teams form working partnerships with Neighbourhood Watch groups, local authority services and community groups to tackle local community safety issues.

Locally you will have access to policing or community safety services through a named contact. These teams help to increase your influence over the priorities in your neighbourhoods as well as improving joint action with partners and communities to resolve problems. So now local people have not only a say in what is important to them in their neighbourhoods but also a chance to get involved and really make a difference themselves.

The lead for neighbourhood policing in the county is Chief Superintendent David Whitehouse. David is well known to us locally, having been area commander for South Warwickshire for the past four years and, also, vice chair of the Stratford Community Safety Partnership and we were sorry to see him leave to take up this new and essential role.

Fortunately, we are extremely lucky to have a very good replacement for David in Chief Superintendent Richard Sear. I have, on behalf of the partnership, had the pleasure of extending a warm welcome to Richard and look forward to working with him in the future.

# Online — a newsletter for people involved in community safety in Stratford District

---

## On your bikes

---

The Stratford Safer Neighbourhood Team is getting the benefit of bikes as they become more accessible to their communities.

Funded by Stratford Community Safety Partnership, the team has been able to buy four top quality bikes and relevant equipment. Local business DSI and Land Rover have also agreed to sponsor additional bikes.

Sgt Lucy Sewell is confident that the bikes will make the Stratford Safer Neighbourhood Team more efficient and effective and will increase the team's accessibility to their communities.

SNTs in other parts of the country have had great success in reducing crime by using bikes, in particular anti-social behaviour and criminal damage.

What they have is the stealth factor allowing a speedy but quiet approach. Combined with the fact that people are unlikely to assume that a bike will be ridden by a police officer means that officers are getting extremely close to offenders before the alarm is raised and the miscreants disperse, greatly increasing the likelihood of an arrest at the scene.

The bikes also increase the mobility of police officers, allowing them to get to places such as playing fields and canal towpaths. Police will now have access to Bancroft Garden, Swans Nest Lane, alley ways on housing estates, Shottery Fields and Welcombe Hills to name but a few; all places where anti-social behaviour has been identified as a problem and where bikes will be able to respond more quickly than cars.

Lucy Sewell is seeking sponsorship for a further two bikes. If you are able to help or know of any companies who might be interested in sponsoring further bikes, contact Lucy at [lucy.sewell@warwickshire.pnn.police.uk](mailto:lucy.sewell@warwickshire.pnn.police.uk)

Steve Newman of Stratford Community Safety Partnership: "Although it's early days, the public's reaction to the bobbies on bikes has been very positive. Their highly visible presence, particularly in the town centre, provides reassurance to locals and tourists alike."



**STOP PRESS:** First arrest for Bobbies on Bikes. Whilst on bicycle patrol in Stratford, PC Harvey Whitehouse attempted to serve a warrant on a known offender who escaped in a motorhome. After calling for support, PC Whitehouse pursued and, together with colleagues also on cycles, made a successful arrest. Sgt Lucy Sewell said: "The mobility and flexibility of the bikes was a significant factor in the arrest - foot patrols and cars couldn't have provided the same response in these circumstances."

# Online — a newsletter for people involved in community safety in Stratford District

---

## Wellesbourne and rural areas

---

### Get WAGging in Wellesbourne

WAG - the Wellesbourne Action Group - brings together community groups from all over the village to look at ways of improving community safety in the area.

The WAG will specifically look at diversionary activities for young people, improving the local environment and deterring crime by clearing litter and graffiti. It will also work alongside the district council, the county council and the Police in putting across the views of the Wellesbourne public as part of the Safer Neighbourhoods agenda.

As Jo Rooke, Community Engagement Worker with Stratford Community Safety Partnership, says:

“There is no fixed remit for the group. We are looking for local people to join up and raise the issues that are important to them. That way, the group can be sure that it is doing what residents want and what will bring benefits to the local community. We already know that crime and the fear of crime are high on the list.”

WAG has already raised money from Warwickshire County Council’s Well Being Fund and has earmarked £6,500 for refurbishing the youth centre in the area. Consultation is taking place at the centre in July with residents welcome to attend and put forward their ideas for how the money can be spent.

The group’s launch was funded by Stratford’s Community Safety Partnership. It brought various community groups together along with representatives of the Police and Fire and Rescue Service.



The launch of the group coincided with the tragically early death of local councillor Anita Macaulay, who served Wellesbourne at parish, district and county level. Anita was passionate about the village and much of the work that the group will go on to do, and the manner in which it will be done will reflect her involvement.

Anybody interested in joining the group should contact Joanne Rooke at Stratford District Council on 01789 260128.

# Online — a newsletter for people involved in community safety in Stratford District

---

## CHARM – doing excellent work with young people

---

Whilst Stratford is an ideal place for a young person to grow up – lots of open spaces, things to do, fascinating towns and low levels of crime – inevitably for a few unfortunate young people, the early years are not so easy.

Positive about Young People is Warwickshire County Council's organisation that seeks to prevent disaffection among young people and remedy it where it occurs. This avoids anti-social behaviour further down the line.

CHARM (Children Area Risk Management) is a multi-agency planning group, working within Positive about Young People, which supports high risk 5-13 year olds and their families. Referrals come from various sources including...

CHARM workers engage with young people through one to one and group work. A large variety of issues can be addressed in these sessions such as anger management, self-esteem, keeping safe, social skills, emotions, offending, stealing and other anti-social behaviour.

Across the south of Warwickshire, CHARM is currently working with 26 young people who have been, or are at risk of becoming, involved in anti-social behaviour or offending.

Stratford CHARM is currently providing two group workshops, one focussing on anger management and one on emotions and social skills. In addition, CHARM is also providing one to one support for 12 young people.

CHARM provides young people with links, support and funding to find and sustain new hobbies and extra-curricular activities in their community.

CHARM believes very strongly in the success of its multi-agency approach and different working methods and the results suggest that the agency is taking the right approach. 90% of young people referred to CHARM do not re-offend and in the years 2001 – 2005, Positive about Young People saw a 55% reduction in 10-13 year olds entering the criminal justice system.



# Online — a newsletter for people involved in community safety in Stratford District

---

## Police News

---

### Change of Area Commander for Warwickshire Police

South Warwickshire has a new district commander as Chief Superintendent Richard Sear has taken over the reins from David Whitehouse.

Richard Sear has over 20 years experience in Warwickshire, carrying out a variety of roles including that of Detective Chief Superintendent, Force Crime Manager, two years as Head of Strategic Development and, most recently, nine months on secondment with Her Majesty's Inspector of Constabulary, inspecting the delivery of criminal justice in other areas of the country.

He takes over from David Whitehouse who leaves Stratford after four years as area commander. David will be overseeing the integration of neighbourhood policing teams into command units across the county.

Richard said: "I am delighted to be taking over from David who leaves the southern policing area in a strong position. I hope to continue the good work that is underway to tackle serious crime, drugs and other threats to our communities."

David, for his part, was extremely complimentary towards the people he had worked with in Stratford, saying: "It has been a pleasure to serve as area commander for the past four years with crime reducing year on year, partnership working increasing and local policing showing good effects."



It's goodbye from him...



...but it's hello to him

# Online — a newsletter for people involved in community safety in Stratford District

---

## The Hub at Henley gets its skates on

---

Four years of planning and designing has reached a climax for the young people of Henley SK8 CRU.

Utilising funding from Stratford District Council, Warwickshire County Council and Beaudesert and Henley Joint Parish Council, Henley's new skate park has formally opened.

The park is currently in use three nights each week and at weekends alongside the youth club run by Warwickshire County Council. Around 30 people each night are now using The Hub and the range of activities has expanded; a pre-learner driving project engages 12 young people, a group has joined forces with other young people from Studley to participate in a rock climbing course whilst a further dozen have worked with a professional artist from Hybrid Arts to create impressions of life in Henley.

It is hoped that further developments will include building a shelter, a graffiti arts project, an increase in the size of the tarmac area and more ramps and jumps.

The activities have achieved very positive results for Henley. Anti-social behaviour and criminal damage involving young people are both down.

Peter Crathorne, chairman of Henley Youth and Community Centre, said: "As a village, Henley has tried to find ways of looking after its young people. We have all worked hard to get this skate park, nobody more so than the young people themselves."



## Studley newsflash! Retail radio link moves forward

Money has been secured from Warwickshire County Council's Well Being Fund to upgrade the retail radio link in Studley.

£15,000 has been allocated to buying the radios and to upgrade the capability of the CCTV room at Stratford District Council which will enable them to link in more effectively with the Police.

# Online — a newsletter for people involved in community safety in Stratford District

---

## Calling time on boozy bother

---

With more and more football fans expected at the bars in and around the town centre to watch the World Cup matches, Police in Stratford took the precaution of working with licensed premises before the competition started.

Officers visited bars and clubs that were screening live matches before the tournament to make sure that owners and doorstaff knew what was expected of them and how they could work with licensing officers from Stratford District Council and the Police to keep trouble to a minimum.

In line with the Home Office's Alcohol Misuse Enforcement Campaign, Police have worked with the district council and county council to crack down on premises and off-licences that sell alcohol to under 18 year olds. Tighter controls have also been brought in on bars and clubs that promote irresponsible behaviour.

Sgt Lucy Sewell of Warwickshire Police said: "We made it plain to people that we would not tolerate aggressive or irresponsible binge drinking. But we were equally clear to retailers that we would come down hard on any negligence on their part as well. We do not tolerate selling alcohol to minors or to people who are obviously drunk."

Away from licensed premises, Police have been making use of powers which allow them to confiscate cans or bottles of alcohol where drinking is associated with anti-social behaviour.

## BARDwatch: Behave or be banned

---

Meanwhile, BARDWATCH has been continuing its excellent work in barring persistent troublemakers from venues in the town centre.

The scheme was launched a year ago by the Police, the District Council and the Town Management Partnership. All members of the scheme are in touch via Stratford's Retail Radio Link. Key to the success of the scheme has been the licensees themselves. They, and the CCTV and doorstaff they employ, make for a highly efficient early warning system, allowing the Police, when notified, to deal with trouble before it escalates into a major incident.

So far, a total of 69 people have been barred from pubs and bars for a variety of offences ranging from throwing a glass, criminal damage, threatening violence and using and selling drugs. Bans range in length from three to six months but can be lifelong. Currently 31 people are serving bans from BARDwatch premises

BARDWATCH recently launched Challenge 21 which is set to become accepted policy throughout the district. The scheme will seek to clamp down on underage drinkers anywhere where alcohol can be purchased – bars, off-licences and supermarkets.

From now on anybody attempting to purchase alcohol who appears under the age of 21 will be asked to provide proof of age ID.

# Online — a newsletter for people involved in community safety in Stratford District

---

## Teenager to run Watch Scheme in Shipston

---

There is an assumption that Neighbourhood Watch schemes tend to be run by older people who have the time to do all the chores that being a co-ordinator entails.

However, in Shipston, this has been stood on its head.

At 15 years of age Stuart Eastbury is the youngest co-ordinator of a Neighbourhood Watch scheme in Warwickshire and may well be the youngest in the country. The idea came when the co-ordinator of a neighbouring scheme mentioned that Stuart's road badly needed someone to co-ordinate the residents' efforts so that nuisance behaviour could be effectively tackled.

Stuart set up the scheme for The Driftway in April when he saw a rise in anti-social behaviour. A residence for older people is at the bottom of his road and Stuart was keen that they were not troubled by nuisance behaviour.

Stuart has already, in the space of two months, had one particularly notable achievement; the scheme in adjoining Husbandsman's Croft has joined the Driftway, meaning that Stuart now co-ordinates a scheme of 18 members meaning still more pairs of eyes are looking out for the area.

So what motivated Stuart to co-ordinate a scheme at such a tender age? Was it because he has one eye on a career in criminology?

It would seem not, as Stuart's long term goal is to be a paramedic. Speaking about why he took the step of co-ordinating Driftway's scheme, he says honestly. "You're there for members and neighbours to try and sort out problems which is fine by me. I just like caring for people and helping them."

Indeed, Stuart is currently doing work experience with older people at a day care unit.

Mike Robbins of the local Neighbourhood Watch Association in Shipston, said: "Stuart is that rare breed of young person who combines being fun with having a sense of responsibility. He is a credit not only to his parents but also to his school."



Stuart Eastbury: the youngest Watch co-ordinator in the county

# Online — a newsletter for people involved in community safety in Stratford District

---

## PCSO Contacts - Stratford

---

PCSOs are an integral part of the community policing that has been keeping the streets of Stratford safer. They work with the community on schemes to prevent crime, improve areas and reduce fear of crime.

Here are the contact details for PCSOs in Stratford.

<b>Officer</b>	<b>Post</b>	<b>Extension number 01926 415000 + ext</b>	<b>Officer</b>	<b>Post</b>	<b>Extension number 01926 415000 + ext</b>
Anita McKinley anita.mckinley@warwickshire.pnn.police.uk	Alcester	4850	Anthony Tolman anthony.tolman@warwickshire.pnn.police.uk	Stratford	4628
Martin Sanford martin.sanford@warwickshire.pnn.police.uk	Bidford	4850	Katie Connor katie.connor@warwickshire.pnn.police.uk	Stratford	4628
Tristan Jelfs tristan.jelfs@warwickshire.pnn.police.uk	Henley in Arden	4660	Robert Williams robert.williams@warwickshire.pnn.police.uk	Stratford	4628
Sharon Southam sharon.southam@warwickshire.pnn.police.uk	Shipston	4670	Gareth Walton gareth.walton@warwickshire.pnn.police.uk	Studley	4850
Anita Reading anita.reading@warwickshire.pnn.police.uk	Southam	4982	Geraldine Mander geraldine.mander@warwickshire.pnn.police.uk	Wellesbourne	4600

# Online — a newsletter for people involved in community safety in Stratford District

---

## Stratford Crime Figures Quarter 1 2006/2007

---

Crime in Stratford district has been coming down in recent months with the first figures for the year 2205/06 showing significant reductions on the previous year's.

Recorded crime was down almost 5% with a figure of 1733 crimes comparing well to 1815 in April-June 2005.

The target of 25% for detections was met and the force is well on track to meeting its annual detection target. Internal changes will enable Warwickshire Police to react more effectively when there are opportunities to make successful detections and further progress is expected.

There was a slight rise in violent crime, during the World Cup so the rise can be put down as a slight aberration, a consequence of over exuberance rather than malice. It marks an aberration in the general good progress. Encouragingly, detections of such offences was 57% well above the target rate for detections.

Domestic Burglary is significantly down. The figure of 68 for the quarter is down from 90 in April – June 2005 to 68 for the same period this year. Again this is attributable to several factors. Much of the domestic burglary was car key burglary. Working with partners in Warwickshire and other neighbouring Police forces resulted in intelligence led road checks on arterial roads which together with the arrest of perpetrators has led to the decline in offences.

Vehicle crime sees the district still achieving its 10% reduction target for the year. The focus again is on detection and the targeting of known offenders.

Drugs crimes are slightly up but, as crimes are only recorded in the event of a detection, this reflects a proactive approach on the part of the Police rather than an increase in drugs crime. In recent months, there have been significant arrests for supplying heroin and cocaine.

Chief Inspector Chris Ward, district commander for Stratford, said: "We can be extremely pleased with these figures which demonstrate that the work being done in Stratford, not only by the Police but also by the Community Safety Partnership, is having an excellent effect."

[Click here to view the Community Safety Performance Monitoring Report for 2006/07 Q1](#)

# Community Safety Performance Monitoring Report

Stratford-on-Avon CDRP

2006/2007 Report 1

## 1. British Crime Survey (BCS) Comparator Crime

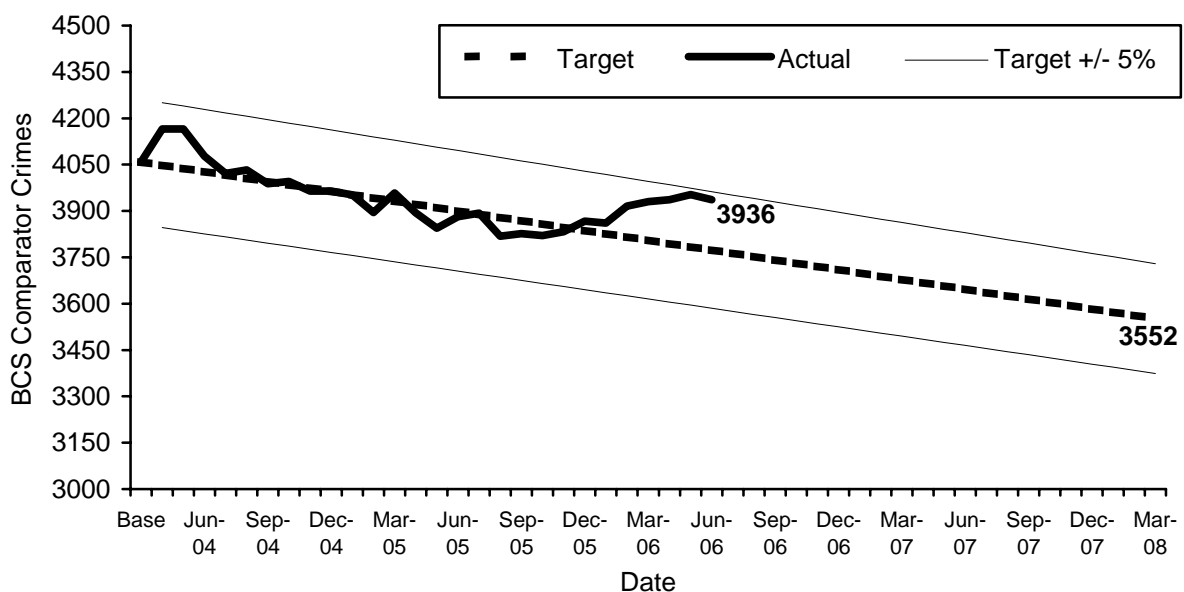
Crime Type	2003/04 Baseline	2007/08 Reduction Target	2007/08 Target	Last 12 months	Change on Baseline	Status
Theft or unauthorised taking of vehicle	244	-16.75%	203	227	-7%	Amber
Theft from a vehicle	845	-16.75%	703	889	5%	Red
Vehicle interference	159	0.00%	159	128	-19%	Green
Domestic burglary	374	-16.75%	311	326	-13%	Amber
Theft or unauthorised taking of a cycle	142	0.00%	142	104	-27%	Green
Theft from person	68	0.00%	68	82	21%	Red
Criminal damage	1,320	-16.75%	1,099	1,379	4%	Red
Common assault	325	-16.75%	271	242	-26%	Green
Woundings (serious and other)	551	-16.75%	459	529	-4%	Red
Robbery of personal property	31	-16.75%	26	30	-3%	Red
Total of selected offences	4,059	15.23%	3,441	3,936	-3%	Red
<b>Overall BCS reduction target</b>	<b>4,059</b>	<b>-12.50%*</b>	<b>3,552</b>	<b>3,936</b>	<b>-3%</b>	<b>Amber</b>

Green = current levels at least 5% below extrapolated target

Amber = current levels within +/- 5% of extrapolated target

Red = current levels at least 5% above extrapolated target

\* Although the overall BCS reduction target is 12.5%, the target for the individual crime types combine to make a reduction target of 15.2%.



## 2. All Recorded Crime

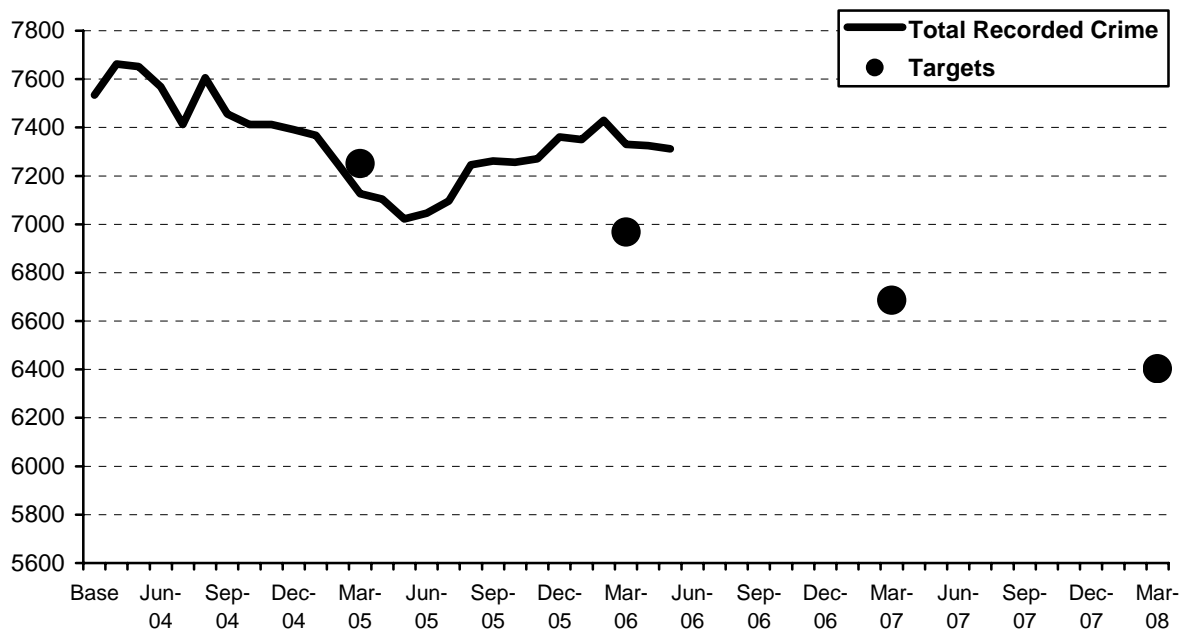
Crime Type	2003/04 Baseline	Last 12 months	Change on Baseline	Change on previous 12 months
Domestic burglary	374	326	-13%	-3%
Violent crime	1,186	1,147	-3%	+4%
- violence against the person	1,071	1,044	-3%	+5%
- robbery	45	42	-7%	+50%
- sexual offences	70	61	-13%	+25%
Vehicle crime	1,089	1,116	2%	+9%
- theft of vehicle	244	227	-7%	-7%
- theft from vehicle	845	889	5%	+14%
Business crime	3,023	2,978	-1%	+8%
- commercial burglary	430	334	-22%	-19%
- shoplifting	332	328	-1%	+16%
- other	2,261	2,316	2%	+12%
Criminal damage	1,320	1,379	4%	0%
Drug offences	291	435	49%	+97%
<b>Total Recorded Crime*</b>	<b>7,534</b>	<b>7,312</b>	<b>-3%</b>	<b>+3%</b>

\* total recorded crime does not equal sum of listed categories

Change on previous 12 months column compares most recent 12 months with 12 month period prior to that e.g. July 2005 – June 2006 compared with July 2004 – June 2005

Warwickshire has a countywide target to reduce total recorded crime by 15% by 2007/08 (with a 2003/04 baseline). The graph below plots progress towards this target locally, with annual targets indicated.

Total Recorded Crime: Stratford-on-Avon District



## 3. Priority Themes



[Click here to return to Online](#)

Stratford-on-Avon CDRP has the following priority themes:

- Anti-social behaviour
- Business crime
- Fear of crime
- Alcohol-related violence

There is an additional target to reduce people's perception of the harm cause by drugs.

Theme	2007/08 Target	2003/04 Baseline	Last 12 months	Change on Baseline	Status
To reduce people's perception of anti-social behaviour	6% increase in the percentage of residents that do not think anti-social behaviour is a problem in their local area	24%	27%	+ 3	Green
To reduce anti-social behaviour	5% reduction in the number of recorded ASB incidents (as defined in Audit 2004)	6,685	n/a*	-	-
To reduce business crime	15% reduction in the number of recorded business crimes	3,023	2,978	-2%	Red
To reduce the fear of crime	Reduction in the percentage of residents that are very or fairly worried about...				
	Having their home broken into and having something stolen to 50%	59%	51%	- 8	Green
	Being physically attacked by strangers to 31%	37%	39%	+ 2	Red
	Having their car stolen to 41%	48%	41%	- 7	Green
To reduce alcohol-related violence	16.75% reduction in reported incidents of violent crime	1,186	1,147	-3%	Red
To reduce peoples perception of the harm caused by drugs	To reduce the percentage of people that think drug dealing/use is a problem in their local area by 2% each year	45%	47%	+ 2	Red

Green – Forecast to achieve by target date

Amber – Some risk of not achieving by target date

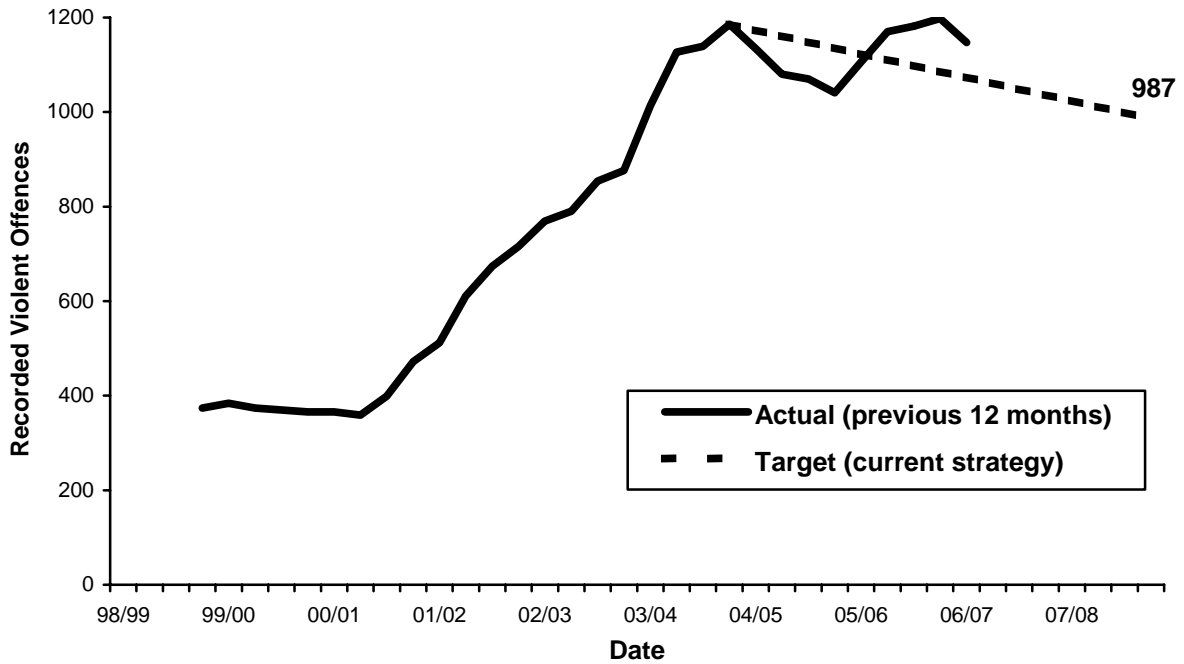
Red – Target unlikely to be achieved by target date

\* This is no longer available under the old definition of ASB due to changes in the Police incident coding system.



[Click here to return to Online](#)

Violent Crimes, Stratford-on-Avon District



**4. Best Value Performance Indicators**

BVPI	2003/04 Rate	2004/05 Rate	2005/06 Rate	2006/07 Projected Rate	2006/2007 (actual numbers per quarter)			
					Q1	Q2	Q3	Q4
126 Domestic Burglary	7.8	6.4	7.1	5.6	68			
127a Violent Crime	10.5	9.0	10.3	10.0	291			
127b Robbery	0.4	0.2	0.3	0.3	10			
128 Vehicle Crime	9.6	9.5	9.3	8.5	249			

All figures are crimes per 1000 population, except BV126 which is per 1000 households, and cover the Stratford-on-Avon District area.

Projections based on current levels continuing throughout remainder of year.



[Click here to return to Online](#)

## 5. Sub-District Statistics

Police Beats – Not available

## 6. Countywide Overview

### BCS Comparator Crime

District/Borough	2003/2004 Baseline	2007/2008 Reduction Target	Last twelve months	Change on 2003/2004
North Warwickshire	3,498	(15.0%) 2,973	2,846	-19%
Nuneaton & Bedworth	8,562	(17.5%) 7,063	7,875	-8%
Rugby	5,902	(17.5%) 4,869	5,954	+1%
Stratford-on-Avon	4,059	(12.5%) 3,551	3,936	-3%
Warwick	6,498	(15.0%) 5,523	6,590	+1%
<b>Warwickshire</b>	<b>28,519</b>	<b>(15.9%) 23,981</b>	<b>27,201</b>	<b>-5%</b>

### LPSA2

Crime Type	2003/2004 Baseline	2007/2008 Enhanced Target	Last twelve months	Change on 2003/2004
Violent Crime *	7,031	(17.56%) 5,796	6,162	-12%
Domestic Burglary	3,193	(20.6%) 2,534	2,533	-21%
Theft of Vehicles	2,122	(20.9%) 1,678	1,828	-14%
Theft from Vehicles	5,132	(17.5%) 4,235	5,190	+1%

\* Violent crime target excludes harassment. Figures are countywide.

## 7. Further Information

This is the latest in a series of quarterly reports providing an overview of recorded crime and disorder statistics. The report is produced for the use of Stratford-on-Avon Crime & Disorder Reduction Partnership and the agencies within that Partnership. The figures should not be reproduced outside of the Partnership without permission from the owners of the statistics, Warwickshire Police. Report produced by Research Unit, Warwickshire County Council.

Please feedback your thoughts on any further amendments that could be made to help make the report more user friendly.

