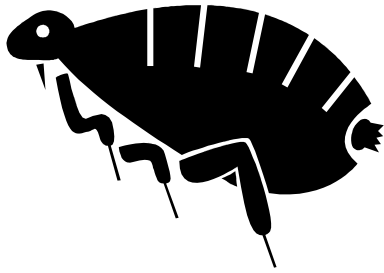


INFORMATION SHEET
An Environmental Protection Team Service



Flea

Blattella orientalis or germanica

An adult flea is 1-4mm long, brown in colour and wingless. They have powerful legs adapted for jumping. A female flea can live up to 2 years. Adult fleas live exclusively as parasites to warm-blooded animals, laying their eggs close to or on the infested animal. The comfortable modern house provides a relatively undisturbed environment for them to prosper.

Fleas are not thought to transmit serious illnesses to humans, but some people are affected by flea bites and can suffer severe irritation.

Regular cleaning, particularly vacuuming, will help prevent the build-up of infestation by removing eggs and larvae from floors, furniture and where pets sleep. To achieve effective control, pets must also be treated with a vet approved application.

The standard treatment for infested premises is the application of a residual insecticide, either as a powder or as a spray. Treated areas should not be cleaned or vacuumed for 10 days or longer. New adults may be emerging from cocoons up to a month after treatment, but the residual insecticide will kill them off.

BJA/ASTS/01.03.10